

The Crafter Kampervan



Commercial
Vehicles



The Crafter **Kampervan**

The ultimate **mobile home**

Built in conjunction with Jayco, our new Crafter Kampervan has been designed, tested and manufactured to bring you the ultimate lifestyle camper. With 4MOTION All-Wheel Drive as standard, leave the city in your tracks and transverse pristine coastal roads, barren desert highways, sloping mountain paths and tropical rainforest tracks.

Crafter Kampervan All Terrain pre-production vehicle shown is for illustrative purposes only and varies from standard specification.

Highlights

- Fitted with kitchen, bathroom and entertainment space
- Sleeps three with a double and single bed
- Fully equipped bathroom with shower and toilet
- Standalone solar-powered battery system
- 4MOTION All-Wheel Drive as standard

We've taken the spirit of the iconic Kombi and versatility of our vans to bring you your new home on the road. With impressive levels of comfort, functionality and personalisation, this mobile home has everything you need on board – not to mention plenty of space for an unforgettable experience.



Maximum comfort. Total freedom.

Ready when you are, the spacious Crafter Kampervan is packed with all the comforts of home and the freedom to go anywhere. Choose how you relax with versatile living spaces that easily convert into both a double and single bed, sleeping up to three. The vehicle also features a well designed kitchen and comfortable living spaces, with seating up to four, allowing you to enjoy your favourite meals on the road.



Pure driving pleasure. On any terrain.

The engine and gearbox combination ensure optimum performance and driving pleasure. 4MOTION All-Wheel Drive provides exceptional traction on virtually any surface, while the 8-speed automatic gearbox significantly enhances driving comfort with its smooth gear changes.

2.0L TDI410 bi-turbo (410Nm, 130kW) 4MOTION 8-speed automatic

Start/stop system~

The system helps to drive economically and switched off the engine when in neutral.

Regenerative braking (recuperation).

Frictional energy is stored during braking and converted into electrical energy by a generator. This is then stored in the car battery and is available for electricity consumption and acceleration.

~The Start/Stop system is designed to reduce fuel consumption and CO2 emissions. It achieves this by automatically switching off the engine while the vehicle is stationary and then starting it again automatically when the driver wants to drive off. There are certain operating conditions where the Start/Stop system is deactivated (e.g. during engine warm-up), please refer to the Owner's Manual for full operating information.



4MOTION All-Wheel Drive.

The 4MOTION permanent All-Wheel Drive distributes the torque between the front and rear axles to all four wheels as needed. This allows the Crafter Kampervan to maintain optimal contact with the road.



Fully automatic.

8-speed automatic gearbox (not illustrated). The high torque in the Crafter Kampervan is transferred to the wheels without almost any interruption of the tractive force. This allows convenient, fuel-efficient driving, even in stop-and-go urban traffic.

Mechanical differential lock.

The mechanical differential lock is included as standard for all Kampervans for the rear axle. Providing additional support to the 4MOTION All-Wheel Drive making it easier to pull away in difficult off-road conditions.

Hill Descent Assist.

This standard system in the Kampervan allows you to descend slopes in a safe, controlled way by regulating the engine speed and applying the brakes as necessary.



Playing it safe

Prepared to handle almost any situation

The Crafter Kampervan is your constant companion. And it always plays it safe. Standard safety systems such as the Front Assist with City Emergency Brake*, Driver Fatigue Detection*, Multi-Collision Braking and six airbags support the driver and help to keep everyone safe.



Driver Fatigue Detection*. Uses visual and audible warning signals to recommend that the driver takes a break as soon as it registers driving behaviour that indicates fatigue. | K | KS | KA |



Seatbelt warning. Visual warning when the engine is started and an audible warning is emitted, if the driver's seatbelt is not fastened. | K | KS | KA |



Airbags*. Front, side and curtain airbags provide the best possible protection in the event of head-on or side impacts. | K | KS | KA |



Cruise Control with speed limiter. At 30km/h and above, the system maintains the set speed throughout uphill and downhill inclines when activated. | K | KS | KA |



Anti-lock Braking System (ABS). Prevents the wheels from locking and thereby maintains manoeuvrability. | K | KS | KA |



Electronic Stabilisation Program (ESP). Standard feature that prevents under- and over-steering through targeted braking of the individual wheels. | K | KS | KA |



Traction Control Systems (TCS). Prevents wheels from spinning excessively. | K | KS | KA |



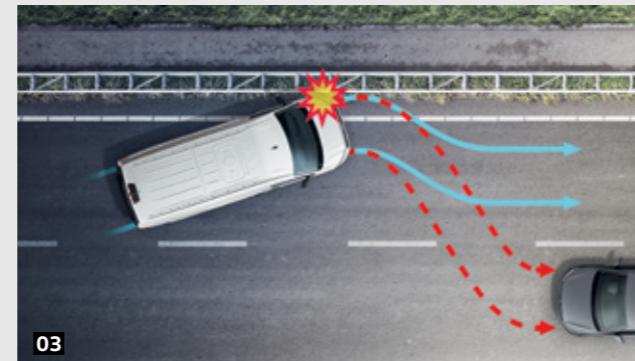
Electronic Differential Lock (EDL). Distributes the engine torque to the tyres without slippage. | K | KS | KA |



01 Rear View Camera (RVC)*. Simplifies parking by showing a limited view of the area behind the vehicle on the display of the radio. Additional guidelines help the driver manoeuvre into the space. | K | KS | KA |

Front and Rear Park Distance Control (PDC)*. Emits audible warnings when obstacles are detected in front of or behind the vehicle when parking, and also provides a visual display of the vehicle's distance from these obstacles. | K | KS | KA |

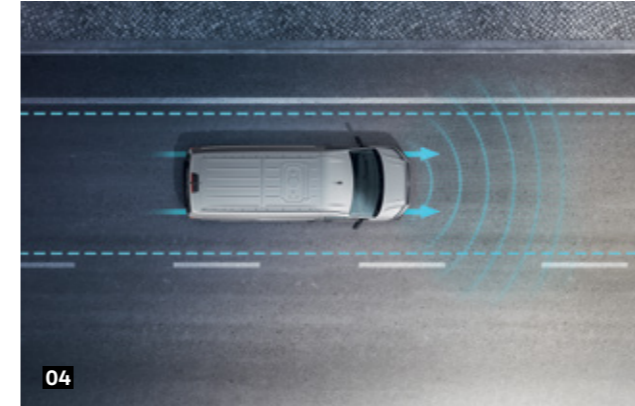
02 Rear Traffic Alert*. Provides an audible warning when reversing out of parking spaces if another vehicle is getting too close. In case the driver fails to react, then the system can minimise the consequences of a possible accident and, in the best case scenario, prevent an accident, through braking intervention. | KS | KA |



03 Multi-Collision Braking. Triggers braking after a collision, with the aim of preventing secondary crashes, activated when two independent sensors detect an accident. After a short delay, the vehicle begins a phased braking action down to 10 km/h, during which the driver can take over at any time. | K | KS | KA |

Electromechanical power steering. The speed-dependent steering with active reset improves your driving feeling and safety and achieves steering precision. | K | KS | KA |

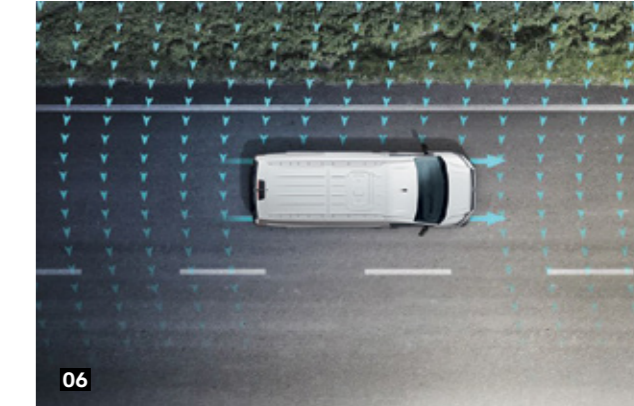
Hill Hold Assist. This prevents the vehicle from rolling back on inclines, making it easier to start off on uphill slopes. | K | KS | KA |



04 Lane Keep Assist*. Countersteers if a lane is left unintentionally while alerting the driver at the same time by using a warning tone and information in the multifunction display. | KS | KA |



05 Sensor-Based Side Protection*. Monitors the vehicle sides and emits visual and audible warnings if coming hazardingly close to pillars, walls or pedestrians. | KS | KA |

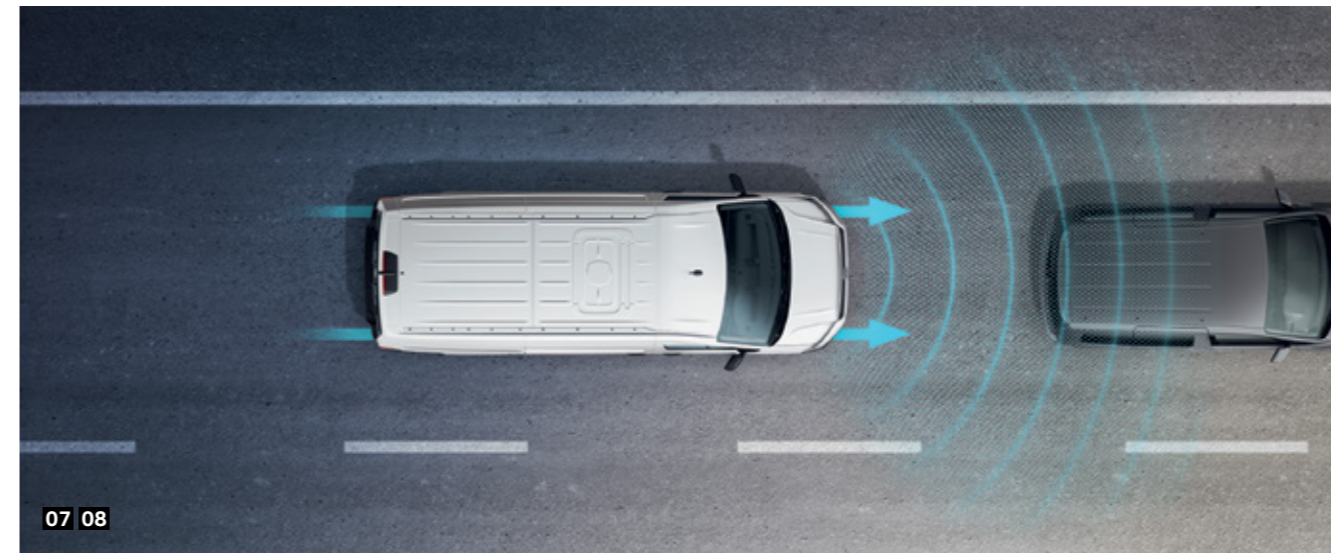


06 Crosswind Assist. The system is a sub-function of the Electronic Stabilisation Program (ESP) that helps dealing with high crosswinds by automatically activating the brakes if needed. | K | KS | KA |

Hill Descent Assist. Available with 4MOTION, it allows you to descend slopes in a safe, controlled way by regulating the engine speed and applying the brakes as necessary. Forms part of the 'Driver Assist Package 4MOTION'. | K | KS | KA |

Mechanical Differential Lock. Available for the rear axle together with the 4MOTION All-Wheel Drive. This makes starting up in adverse, off-road conditions much easier. | K | KS | KA |

Blind Spot Monitoring*. The Blind Spot Monitor system supports the driver in assessing and avoiding dangerous situations, especially in critical situations, e.g. city and heavy traffic. The Blind Spot Monitor detects cars and motorcycles in the driver's blind spot and highlights these vehicles via a LED indicator in the door mirror. | KS | KA |



07 Front Assist with City Emergency Braking*. Uses a radar system to detect situations where the distance to the vehicle in front is critical and reduces the vehicle's stopping distance. In dangerous situations, the system alerts the driver using visual and acoustic signals, and with a warning jolt of the brakes. | K | KS | KA |

08 Adaptive Cruise Control ACC*. Automatically adapts the vehicle's speed to that of the vehicle driving in front and maintains the distance set by the driver. | KS | KA |

Standard equipment

Variant	K	KS	KA
2.0L TDI410 bi-turbo diesel engine (410Nm, 130kW)	●	●	●
8-speed Automatic transmission	●	●	●
4MOTION All-Wheel Drive	●	●	●
Cabin	K	KS	KA
Dash panel in two tone, stowage compartments, cup holders and lockable glove box	●	●	●
Multifunction steering wheel, height and longitudinal adjustment	●	—	—
Leather wrapped multifunction steering wheel, height and longitudinal adjustment, heated	—	●	●
Heated Windshield	—	●	●
2 x 12 V socket on the dash panel	●	—	—
3 x 12 V socket on the dash panel	—	●	●
Driver and front passenger swivel seats, including seat cushion angle adjusters and electrical 4-way adjustable lumbar support	●	●	●
LED interior lighting in the cabin roof console	●	●	●
Drivers cabin storage system (includes overhead storage)	●	●	●
Rubber floor	●	●	●
Rubber all-weather mats	●	●	●
Step Illumination	—	●	●
Off-Road and Suspension	K	KS	KA
Mechanical Differential Lock	●	●	●
Hill Decent Assist	●	●	●
Heavy-duty suspension system and shock absorption, heavy-duty stabilizers	●	●	●
Lift kit +30mm	—	—	●
Seikel Engine Underbody Protection	—	—	●
Seikel AdBlue Tank Protection	—	—	●
Seikel Rear Differential Protection Plate	—	—	●
Seikel Rear Shock Protection	—	—	●
Air conditioning and sun protection	K	KS	KA
"Climatic" air conditioning system	●	●	●
Sun blinds in passenger compartment	●	●	●
Privacy glass in the passenger compartment	●	●	●



Exterior	K	KS	KA
Halogen headlights with separate Daytime Running Lights (DRL)	●	—	—
LED headlights with LED Daytime Running Lights (DRL)	—	●	●
Automatic Front Fog Lights with Cornering Function	●	●	●
Headlamp washer system with washer fluid level indicator	—	●	●
Exterior mirrors with integrated LED turn signal and wide angle range	●	—	—
Exterior mirrors with integrated LED turn signal, wide angle range, power adjustable and heated	—	●	●
Side sliding door, left, 1,311mm wide with interlock for certain opening positions	●	●	●
Rear barn doors with window, wiper/washer and increased opening angle (max. 270°)	●	●	●
16" black steel wheels with full sized steel spare wheel, tool kit and jack	●	●	●
16" black steel wheels with Off-Road AT Tyres with full size steel spare wheel, tool kit and jack	—	—	●
17" Alloy wheels	—	○	—
Side reflectors	●	●	●
Electric side step for LHS sliding door	●	●	●
Rear Passenger compartment	K	KS	KA
Convertible 2-seater bench seat/ Single bed in second row	●	●	●
Removable table in second row	●	●	●

Kampervan Amenities	K	KS	KA
Bathroom including shower, sink and toilet	●	●	●
Kitchen including 60L 12 V fridge, 240 V microwave, 2x burner gas cooktop, sink with hot/cold fresh water	●	●	●
Rear lounge and dining area including swivel table, under seat storage and convertible rear rear 2 person bed	●	●	●
Timber look vinyl flooring in rear	●	●	●
Overhead storage compartments in the rear	●	●	●
Soft furnishings (includes bedding and day pillows)	●	●	●
Entertainment systems including: 12V TV and DVD unit, Stereo System with internal and external speakers	●	●	●
LED interior lighting	●	●	●
Solarscreens for windows	●	●	●
Fire Extinguisher	●	●	●
Fiamma awning (manual)	●	●	●
Exterior lights	●	●	●
External shower fittings and privacy screen	●	●	●
Rear door flyscreen	●	●	●
2 x Camping chairs and table with integrated storage pockets in the rear doors	●	●	●
Diesel heating system	●	●	●
120L Fresh and 80L Grey water tanks	●	●	●
2 x Lithium house batteries (240Ah total capacity)	●	●	●
1500w 240 V Inverter with RCD protection	●	●	●
200w Roof mounted solar panel system	●	●	●
2 x interior mini fans	●	●	●
Roof mounted Dometic Harrier lite reverse cycle air-conditioning system	●	●	●

● Standard ○ Optional package — Not available | K | Kampervan | KS | Kampervan Style | KA | Kampervan All-Terrain

* Safety technologies are designed to assist the driver, but should not be used as a substitute for safe driving practices.
 ~ App-Connect is compatible for selected apps with the latest smartphone versions of iOS and Android, active data service, optional connection cable (sold separately).
 * Leather appointed seats have a combination of genuine and artificial leather, but are not wholly leather.

Standard equipment cont.

Safety Assist	K	KS	KA
Airbags			
Front airbag for driver and front passenger	●	●	●
Side and curtain airbags for driver and front passenger	●	●	●
Seat belts			
3-point seat belts with height adjustment and belt tensioners for driver	●	●	●
Seat belt warning light and buzzer for driver's seat	●	●	●
3-point seat belts for all passengers.	●	●	●
Brakes and Traction Control			
Multi-Collision Brake (MCB)	●	●	●
Adaptive ELectronic Stabilisation Programme (ESP)	●	●	●
Anti-lock Braking System (ABS)	●	●	●
Brake Assist (BA)	●	●	●
Traction Control System (TCS)	●	●	●
Electronic Differential lock (EDL)	●	●	●
Hill Hold Assist	●	●	●
Crosswind Assist	●	●	●
Driver Assistance Technology			
Front Assist with City Emergency Brake*	●	●	●
Driver Fatigue Detection*	●	●	●
Front and Rear Park Distance Control* (PDC) with Rear View Camera*	●	●	●
Crosswind Assist*	●	●	●
Cruise Control, including speed limiter	●	●	●
Adaptive Cruise Control (ACC)*	—	●	●
Side Protection*	—	●	●
Rear Traffic Alert*	—	●	●
Blind Spot Monitoring*	—	●	●
Lane Keep Assist*	—	●	●
4MOTION Assistance			
Mechanical Differential Lock*	●	●	●
Hill Descent Assist*	●	●	●
Driver Cabin	K	KS	KA
Composition Colour 6.5" radio system with USB input and Bluetooth®	●	—	—
Discover Media 8" navigation system with colour touch display and USB input and Bluetooth®	—	●	●
4 loudspeakers	●	—	—
6 loudspeakers	—	●	●
2 USB-C ports, App-Connect-Bluetooth® phone and audio streaming capability	●	●	●

● Standard ○ Optional package — Not available | K | Kampervan | KS | Kampervan Style | KA | Kampervan All-Terrain

* Safety technologies are designed to assist the driver, but should not be used as a substitute for safe driving practices.
 ~ App-Connect is compatible for selected apps with the latest smartphone versions of iOS and Android, active data service, optional connection cable (sold separately).



Equipment Features.



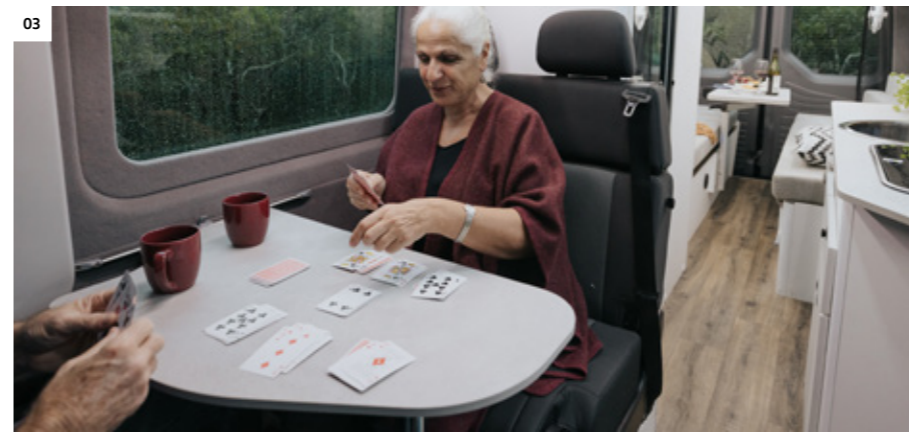
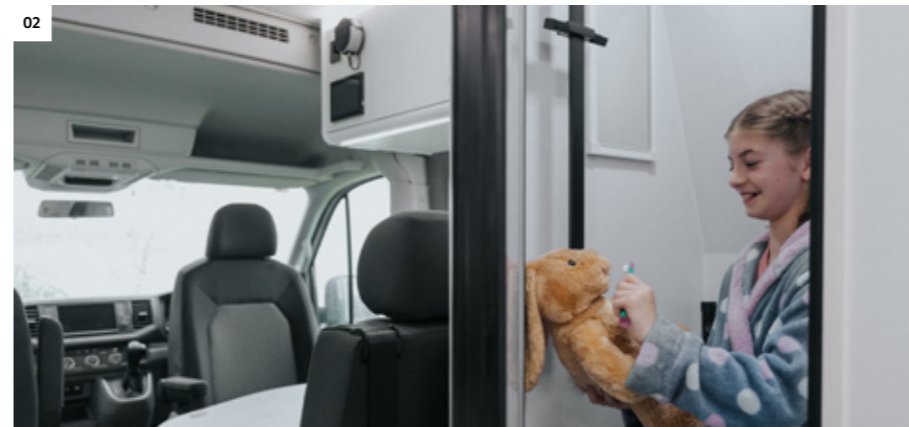
01 Two-burner gas cooker with glass cover. The gas cooker makes cooking a breeze, and when not in use the convenient glass cover provides additional bench space. | K | KS | KA |

02 Matt Black sink mixer. | K | KS | KA |

03 Microwave oven 240 V. | K | KS | KA |

04 Refrigerator-freezer combination 12 V - 60L. | K | KS | KA |

Equipment Features.



01 Double bed. Dining table and lounge easily folds into a double bed in rear, comfortably sleeping up to 2 people. | K | KS | KA |

02 Full bathroom. Fully fitted bathroom including shower, Thetford cassette toilet and vanity. | K | KS | KA |

03 Front cabin seating and table. | K | KS | KA |

04 Lounge and dining area. Entertainment space with 4-seater lounge, adjustable dining table and mounted 24" LED TV with DVD player. | K | KS | KA |

05 Single Bed. Seat and table in front cabin can be folded into a single bed. | K | KS | KA |

Equipment Features.



01 LED interior lighting | K | KS | KA |

02 Overhead storage | K | KS | KA |

03 Two Interior fans. Sirocco fans with 360-degree directional airflow, can be easily folded out of the way when not in use. | K | KS | KA |

04 Sphere 12 V TV in lounge area | K | KS | KA |

05 Swivel seats. Driver and front passenger swivel seats, including seat cushion angle adjusters and electrical 4-way adjustable lumbar support. | K | KS | KA |

06 Climatic air conditioning system. This system provides your required cabin temperature efficiently, while maintaining your selected temperature. | K | KS | KA |

07 Ample storage compartments. Easily accessible storage space including stowage compartments under rear lounge area and overhead secure cupboards. | K | KS | KA |

08 Furrion stereo. Centrally controlled multi-function stereo system which connects to CD and radio. | K | KS | KA |

Equipment Features.



01 Folding table and two chairs. An easy to set up seating option for outdoors. After use, they can be simply stowed in the storage pockets of the rear wing doors. | K | KS | KA |

02 Fiamma Box Awning. | K | KS | KA |

03 External power sockets. 12 V and 240 V power sockets located externally for convenient use. | K | KS | KA |

05 Electric exterior step. | K | KS | KA |



01

Always well connected with state-of-the-art infotainment systems.

Fitted with an impressive range of standard equipment, the Crafter Kampervan lets you personalise your journey with ultimate convenience. The Composition Media audio system makes it easy to navigate with a 6.5-inch colour touchscreen, where you can also tune in to your favourite playlists on the long hauls. You'll also be well connected with Bluetooth® phone connectivity with contacts display.

And if you're looking for a little more, upgrade to the Kampervan Style or All-Terrain models to get the Discover Media Audio system with App-Connect[^] as standard. This optional upgrade includes everything from the standard Composition Media system, plus an upgraded 8-inch colour touchscreen with proximity sensor, Satellite Navigation, 2D and 3D map views.

01 Multifunction Steering Wheel. The rocker switches let you conveniently control the Multi-Function Display, audio, mobile phone hands-free system and radio systems. | K | KS | KA |

02 'Composition Media' audio system with App-Connect[^]. Experience even more infotainment on the road with 6.5" colour touchscreen display, AM/FM radio, USB-C inputs and four (4) speakers. Car menu with convenience and service settings. Includes display for Park Distance Control* and Rear View Camera*. App-Connect[^] USB interface for Apple CarPlay®, Android Auto™ and MirrorLink® in dash panel. | K |



02



03

03 'Discover Media' audio system with App-Connect[^] and Satellite Navigation. Discover Media audio system features 8" colour touchscreen display, FM radio, USB-C inputs and four (4) speakers. 2D and 3D (bird's eye) map views. Includes display for Park Distance Control* and Rear View Camera*. App-Connect[^] USB interface for Apple CarPlay®, Android Auto™ and MirrorLink® in dash panel. | KS | KA |

Standard equipment Optional extra | K | Kampervan | KS | Kampervan Style | KA | Kampervan All-Terrain

[^]App-Connect is compatible for selected apps with the latest smartphone versions of iOS and Android, active data service, and connection cable (sold separately).

*Safety technologies are designed to assist the driver, but should not be used as a substitute for safe driving practices.

Image shown for illustrative purposes only and varies from standard MY22 specification.

Colours, Upholstery and Wheels

Solid paint finishes



Candy White | Solid paint finish | B4B4
| K | KS | KA |

Metallic and Pearlescent paint finishes



Reflex Silver | Metallic paint finish | 8E8E
| K | KS | KA |



Indium Grey | Metallic paint finish | X3X3
| K | KS | KA |

Two Tone paint finishes



Candy White | Deep Ocean
Two Tone paint finish | 9583
| KS | KA |



Candy White | Cherry Red
Two Tone paint finish | 9335
| KS | KA |



Candy White | Mojave Beige Metallic
Two Tone paint finish | 9198
| KS | KA |



Reflex Silver Metallic | Indium Grey Metallic
Two Tone paint finish | 9798
| KS | KA |

Wheels

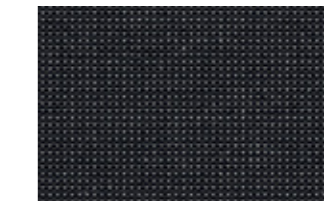


16" steel wheel (Black)
| K | KS | KA |



17" "Lismore" alloy wheel
| KS |

Drivers cabin seat upholstery



Austin | Cloth seat upholstery |
Titanium Black

Standard equipment Optional extra | K | Kampervan | KS | Kampervan Style | KA | Kampervan All-Terrain

Please note that Metallic, Pearl Effect and Two Tone paint are optional at extra cost. The print process does not allow for exact reproduction of the exterior or the upholstery colours. Please contact your Volkswagen Dealer for further information on colours and upholstery combinations.

Technical Specifications

Engine	2.0 Litre TDI 410 BlueMotion with engine Stop/Start system~ and brake energy recovery
Type	4-cylinder diesel engine, common rail bi-turbo direct injection
Max Power, kW @ RPM	130 @ 3,600
Max Torque, Nm @ RPM	410 @ 2,000
Cubic Capacity, litres/cc	2.0 / 1968
Bore/stroke, mm	81.0 x 95.5
Fuel Type	Diesel, min. 51 CZ in accordance with DIN EN 590
Fuel tank capacity, L	75
Compression Ratio	15.5:1
Brake Systems	Anti-lock Braking System (ABS) with Electronic Brake-pressure Distribution (EBD), Brake assist and Electronic Stabilisation Program (ESP), Brake energy recuperation
Steering	Electro-mechanical power-assisted rack & pinion steering
Transmission	4MOTION
8 Speed Automatic	●
Brakes	
Front disc brakes, mm	303 x 28 ventilated
Rear disc brakes, mm	300 x 22 ventilated

Weights and Capacities

	Kampervan	Kampervan Style	Kampervan All-Terrain
Weights & Payloads - Standard Variant			
Gross Vehicle Mass (GVM), kg	4,000	4,000	4,000
Unladen Weight ¹ , kg (automatic)	3,278	3,292	3,342
Payload Maximum ² , kg (automatic)	722	708	658
Towing			
Towing Capacity - Braked, kg [#]	2,500	2,500	2,500
Towing Capacity - Unbraked, kg	750	750	750
Towing Downball Load, kg	150	150	150

● Standard

Full vehicle specifications are available at www.volkswagen.com.au

~The Start/Stop system is designed to reduce fuel consumption and CO2 emissions. It achieves this by automatically switching off the engine while the vehicle is stationary and then starting it again automatically when the driver wants to drive off. There are certain operating conditions where the Start/Stop system is deactivated (e.g. during engine warm-up), please refer to the owner's manual for full operating information.

1. The Unladen Mass (UM) includes 10L of fuel, vehicle fluids and no occupants. Figures quoted are for base model vehicles only.

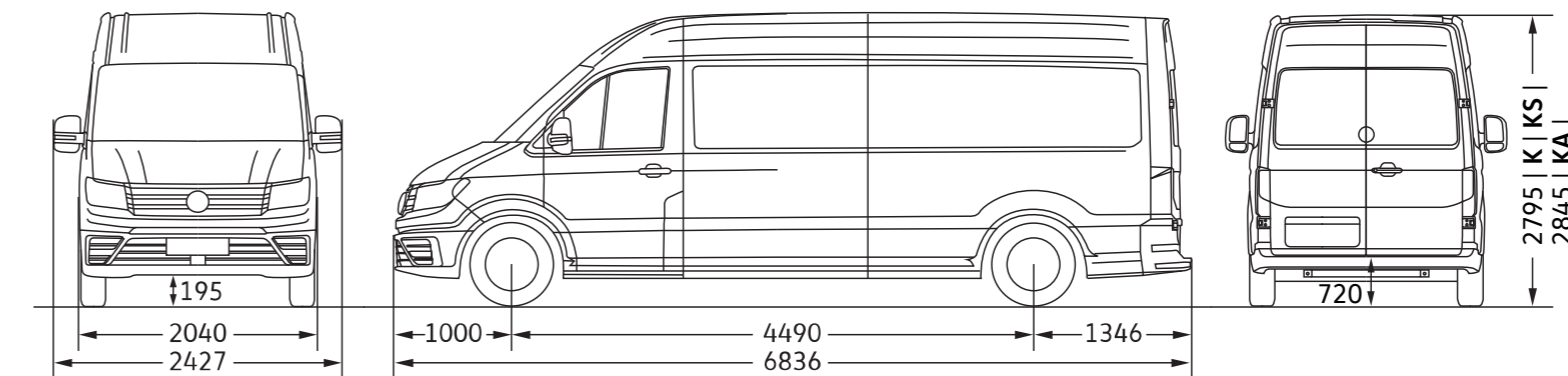
2. Payload is defined as the Gross Vehicle Mass (GVM) minus the Kerb Mass. Payload is the maximum combined weight of occupants, cargo, added structures and tow ball down weight (when towing). GVM must not be exceeded.

#Towing capacities are applicable to Volkswagen Genuine Accessory Tow Bar. Towing capacity figures are maximum figures and actual towing capacity depends on factors including the laden mass of the vehicle, driving conditions and fitment of any accessories. Volkswagen Group Australia does not endorse or will not be held liable for any claim, loss or damage arising from the use or fitment of electronic trailer brakes.

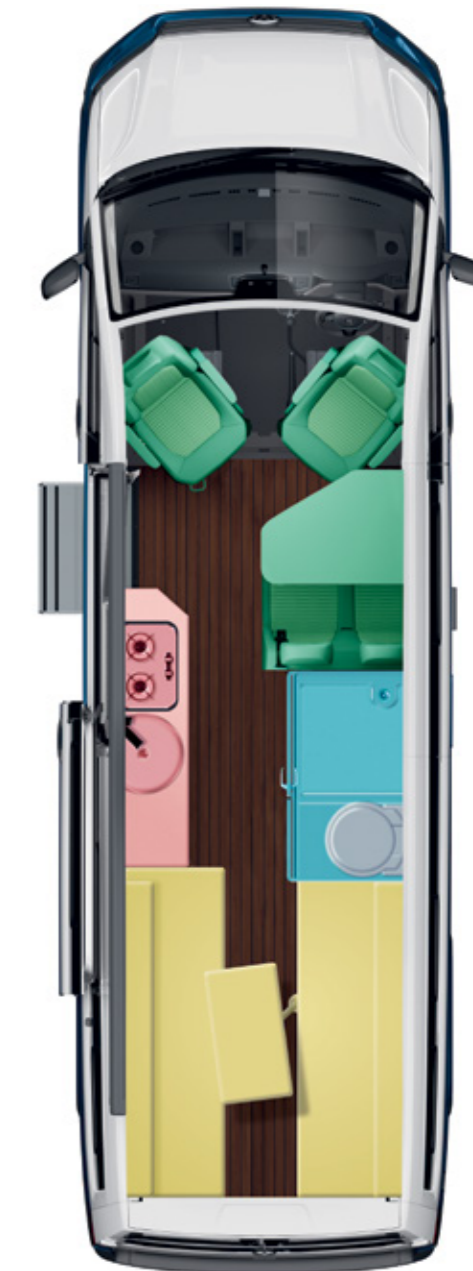
Dimensions

	Kampervan	Kampervan Style	Kampervan All-Terrain
Interior Dimensions			
Seating capacity	4	4	4
Compartment Length (Behind Front Seats), mm	4,300	4,300	4,300
Interior Height (Behind Front Seats), mm	1,861	1,861	1,861
Sliding Door Width, mm	1,311	1,311	1,311
Sliding Door Height, mm	1,722	1,722	1,722
Rear Door Width, mm	1,552	1,552	1,552
Rear Door Height, mm	1,740	1,740	1,740
Turning Circle (m)	16	16	16
Exterior Dimensions			
Wheelbase, mm	4,490	4,490	4,490
Vehicle Length, mm	6,836	6,836	6,836
Vehicle Width, mm including mirrors	2,427	2,427	2,427
Vehicle Width, mm excluding mirrors	2,040	2,040	2,040
Vehicle height, mm	2,795	2,795	2,845
Front Overhang, mm	1,000	1,000	1,000
Rear Overhang, mm	1,346	1,346	1,346

All dimensions shown in mm.



| K | Kampervan | KS | Kampervan Style | KA | Kampervan All-Terrain



Kampervan Features

	Kampervan	Kampervan Style	Kampervan All-Terrain
Construction			
Aluminium frame in dinette seats and bed frames	●	●	●
Aluminium corner furniture extrusion in high impact areas	●	●	●
Storage			
Large pot drawers with Ezi-Glide runners	●	●	●
Kitchen cabinets	●	●	●
Under bed storage	●	●	●
Batteries, Technology and Entertainment			
Battery management system - Projecta PM100-BTJ	●	●	●
Control panel	●	●	●
2 House batteries - 120Ah Lithium (2x 120Ah Lithium, 240Ah total capacity)	●	●	●
Inverter 1500w with RCD protection	●	●	●
12 V and 240 V Power sockets	●	●	●
Roof mounted solar panel - 200w	●	●	●
Sphere 12 V TV with build in DVD player	●	●	●
Furrion stereo CD/DVD/Radio	●	●	●
Internal and external stereo speakers	●	●	●
Wi-Fi extender	●	●	●
Interior Features			
External electric step for LHD sliding door	●	●	●
Bathroom (Toilet, Shower and vanity)	●	●	●
Thetford cassette toilet	●	●	●
Kitchen (Benchtop, sink, and cabinetry)	●	●	●
12 V Fridge - 60L	●	●	●
Gas cooktop with hinged glass lid - 2 Burners	●	●	●
Microwave 240 V	●	●	●
LED strip light under overhead cupboards	●	●	●
Dometic Harrier Lite roof mounted air conditioner	●	●	●
Eberspacher Diesel heating system	●	●	●
Fresh water tank (120 litres)	●	●	●
Grey water tank (80 litres)	●	●	●
Hot water system	●	●	●
2 x fans	●	●	●
LED lighting	●	●	●

● Standard

Kampervan Features

	Kampervan	Kampervan Style	Kampervan All-Terrain
Exterior Features			
Fiamma manual Box awning - 4.0m	●	●	●
Gas bottle stored in sealed compartment	●	●	●
External shower/water access	●	●	●
External 240V PowerPoint	●	●	●
External 12V PowerPoint	●	●	●
External TV point	●	●	●
LED Annex light	●	●	●
Comfort			
Double bed/lounge setting	●	●	●
Rear seat/daybed/bed setting	●	●	●
2 x table settings	●	●	●
Roof hatch in living area	●	●	●
Exhaust fan hatch in shower room	●	●	●
Rear door fly netting	●	●	●
Accessories and Loose Items			
4 x Scatter cushions	●	●	●
1 x Duvet	●	●	●
1 x Blanket / throw rug	●	●	●
1 x Kitchen draw management system	●	●	●
1 x Plastic chopping board	●	●	●
1 x Power extension lead	●	●	●
2 x Fold out chairs	●	●	●
1 x Fold out camper table	●	●	●
1 x Fire extinguisher	●	●	●
1 x Removable height adjustable step	●	●	●
1 x External shower screen/tent	●	●	●
2 x Fiammma level pro set	●	●	●
Solar screens for all windows	●	●	●
External fittings/attachments/hose + carriers (Black water hose, blue non toxic water hose, 3 piece brass adapter set)	●	●	●

● Standard

Safety and Security

	Kampervan	Kampervan Style	Kampervan All-Terrain
Airbags			
Front airbag for driver and front passenger	●	●	●
Side and curtain airbags for driver and front passenger#	●	●	●
Seat belts			
3-point seat belts with height adjustment and belt tensioners for driver	●	●	●
Seat belt warning light and buzzer for driver's seat	●	●	●
3-point seat belts for all passengers	●	●	●
Brakes and Traction Control			
Multi-Collision Brake (MCB)	●	●	●
Adaptive ELectronic Stabilisation Programme (ESP)	●	●	●
Anti-lock Braking System (ABS)	●	●	●
Brake Assist (BA)	●	●	●
Traction Control System (TCS)	●	●	●
Electronic Differential lock (EDL)	●	●	●
Hill Hold Assist	●	●	●
Crosswind Assist	●	●	●
Driver Assistance Technology			
Front Assist with City Emergency Brake*	●	●	●
Driver Fatigue Detection*	●	●	●
Front and Rear Park Distance Control* (PDC) with Rear View Camera*	●	●	●
Cruise Control, including speed limiter	●	●	●
Adaptive Cruise Control (ACC)*	—	●	●
Side Protection*	—	●	●
Rear Traffic Alert*	—	●	●
Blind Spot Monitoring*	—	●	●
Lane Keep Assist*	—	●	●
Electric Folding Mirrors	—	●	●
4MOTION Assistance			
Mechanical Differential Lock*	●	●	●
Hill Descent Assist*	●	●	●
Locking and Security			
Central locking system with radio remote control and interior release mechanism	●	●	●
Two (2) remote control folding keys	●	●	●
Engine immobiliser (electronic)	●	●	●
Head Restraints			
Safety optimised head restraints, height adjustable	●	●	●

● Standard — Not available

*Excludes Crafter Van with high roof, without a partition and no right hand side sliding door. Vans with super-high roof have no curtain airbags.

*Safety technologies are designed to assist the driver, but should not be used as a substitute for safe driving practices.

Safety and Security Cont.

	Kampervan	Kampervan Style	Kampervan All-Terrain
Lighting			
Twin Halogen headlights	●	—	—
Headlight range adjustment	●	●	●
Separate Daytime Running Lights (DRL)	●	●	●
LED headlamps with separate LED Daytime Running Light	—	●	●
High rear stop light	●	●	●
Rear fog light	●	●	●
Headlamp washer system with washer fluid level indicator	—	●	●
Fog lights with cornering function	●	●	●
Light and Sight' windshield wiper intermittent control with light and rain sensor	●	●	●
Separate daytime running light with automatic head light control	●	●	●
Leaving Home' function and manual 'Coming Home' function	●	●	●

Exterior Equipment and Styling

	Kampervan	Kampervan Style	Kampervan All-Terrain
Doors			
Sliding door, leff, in rear with interlock for certain opening positions and increased lift-out distance	●	●	●
Rear barn doors with heated window, rear wiper and washer system	●	●	●
270 degree opening rear barn doors	●	●	●
Windows			
Heat-insulating windshield made of laminated glass	●	-	-
Heat-insulating windshield made of laminated glass, heated	-	●	●
Heat-insulating glass (green)	●	●	●
Windscreen wiper intermittent control	●	●	●
Heated windows with wiper/washer system in rear barn doors	●	●	●
Electric power windows with comfort operation and circuit breaker (front)	●	●	●
Side window in in rear compartment, front right, fixed	●	●	●
Side window in rear compartment, front left, sliding	●	●	●
Side window in rear compartment, rear left and right, fixed	●	●	●
Wheels and Tyres			
16" black steel wheels with centre wheel trim - 205/75 R16 C113/111	●	●	—
17" "Lismore" alloy wheels with centre wheel trim - 205/70 R17 C115/113	—	○	—
16" black steel wheels with centre wheel trim ATR - 235/65 R16 C121/119 R	—	—	●
Steel spare wheel	●	●	●
Tool kit with vehicle jack	●	●	●
Hub caps with chrome emblems	—	●	●

● Standard ○ Optional package — Not available

Exterior Equipment and Styling Cont.

	Kampervan	Kampervan Style	Kampervan All-Terrain
Body Enhancements			
Black bumper bar in front with painted trim panel in body colour	●	●	●
Black exterior mirror housings and door handles	●	●	●
Black side protective strips	●	●	●
Unpainted radiator grille	●	●	●
Radiator grille painted with 3 (three) chrome molding	●	●	●
Trailer hitch preparation (including trailer stabilisation)	●	●	●
Side reflectors	●	●	●
Underbody stone guard	●	●	●
One towing eye in front and in rear	●	●	●
Engine Underbody Protection	—	—	●
Rear Differential Protection Plate	—	—	●
AdBlue Tank Protection	—	—	●
Rear Shock Protection	—	—	●
Suspension and Chassis			
Standard suspension system and shock absorpion, heavy-duty stabiliser	●	●	●
Reinforced front axle	●	●	●
Lift kit +30mm	—	—	●

Comfort and Convenience

	Kampervan	Kampervan Style	Kampervan All-Terrain
Air Conditioning, Batteries and Alternators			
Climatic air conditioning system with dust and pollen filter in the cabin	●	●	●
AGM battery and alternator with increased capacity	●	●	●
2nd battery with cut-off relay and battery monitoring (AGM battery)	●	●	●
Floor Covering and Side Trim			
Rubber floor covering in cabin	●	●	●
Rubber floor matt coverings	●	●	●
Mirrors			
Exterior mirrors with integrated LED turn signal and wide angle range (left: convex, right: convex)	●	●	●
Exterior mirrors, power adjustable and heated	—	●	●
Dimming breakaway interior rear view mirror	●	●	●
Seating			
Swivel seat — driver	●	●	●
Swivel seat — front passanger	●	●	●
Rear Passanger seat with top teather	●	●	●

● Standard — Not available

^App-Connect is compatible for selected apps with the latest smartphone versions of iOS and Android, active data service, and connection cable (sold separately).

*Safety technologies are designed to assist the driver, but should not be used as a substitute for safe driving practices.

Comfort and Convenience Cont.

	Kampervan	Kampervan Style	Kampervan All-Terrain
In-Car Entertainment and Technology			
Composition Media' audio system with App-Connect^ 6.5" colour touchscreen display, AM/FM radio, USB-C inputs and four (4) speakers. Car menu with convenience and service settings. Includes display for Park Distance Control* and Rear View Camera*. App-Connect^ USB interface for Apple CarPlay®, Android Auto™ and MirrorLink® in dash panel.	●	—	—
Discover Media' audio system with App-Connect^ and Satellite Navigation 8" colour touchscreen display, FM radio, USB-C inputs and four (4) speakers. 2D and 3D (bird's eye) map views. Car menu with convenience and service settings. Includes display for Park Distance Control* and Rear View Camera*. App-Connect^ USB interface for Apple CarPlay®, Android Auto™ and MirrorLink® in dash panel.	—	●	●
Bluetooth® phone connectivity with contacts display and Bluetooth® audio streaming, operation via touchscreen audio unit or Multi-Function Display	●	●	●
Audio, telephone, cruise control and Multi-Function Display controls mounted on steering wheel	●	●	●
Instrumentation			
Speedometer and tachometer, electronic odometer and trip meter, service interval display, fuel and coolant gauges, low fuel warning light, adjustable illumination; chrome applications of the instrument cluster	●	●	●
Multi-Function Display (MFD Plus) - exterior temperature, speed limit warning, average fuel consumption, brake pad wear indicator, average speed, current fuel consumption, range, journey time, service, gear recommendation, time, digital speed display, digital oil temperature gauge, language setting, light and sound	●	●	●
Steering Wheel			
Electro-mechanical power-assisted rack and pinion steering	●	●	●
Multi-function steering wheel, height and reach adjustable	●	●	●
Audio, telephone, cruise control and Multi-Function Display controls mounted on steering wheel	●	●	●
Leather-wrapped multi-function steering wheel (3-spoke), heated	—	●	●
Interior Lighting			
Two (2) LED reading lights in cabin	●	●	●
LED Lighting throughout rear	●	●	●
Cabin			
Illuminated glove compartment with lockable lid	●	●	●
Overhead storage with two 1-DIN-slots and reading lamp	●	●	●
Four (4) cup holders in the dashboard	●	●	●
Front door pockets	●	●	●
Front sunvisors (folding and swiveling) with ticket holder on both sides	●	●	●
Open storage compartments in the dashboard above the glovebox	●	●	●
Open storage compartment next to gear lever	●	●	●
Two (2) 12 Volt sockets in the dashboard	●	●	●
Grab handles for driver and front passenger on A pillar	●	●	●
Chrome elements in the interior	—	●	●
Functional Equipment			
Illuminated step in the cabin	—	●	●

● Standard — Not available



5 years Unlimited Kilometre Warranty

At Volkswagen, we pride ourselves on the highest quality standards that come with German engineering.

We back this commitment with a 5 year unlimited kilometre warranty on all new Volkswagen vehicles¹.



5 year Roadside Assist

Your new Crafter Kampervan comes with 5 year Roadside Assist membership².

That's 24 hour roadside assistance, emergency accommodation, car rental and towing as well as property and other assistance, all included for added peace of mind.



Volkswagen Care Plans

Volkswagen Care Plans³ have you covered for your first 3 or 5 scheduled services, providing you savings off the total Assured Service Pricing RRP. It's convenient, hassle-free scheduled servicing easily available for purchase at your local Volkswagen Dealer.



Assured Service Pricing

Assured Service Pricing⁴ gives you the transparency of knowing how much your service will cost up front.

Our Volkswagen Dealers have access to the latest diagnostic equipment and tools. Plus, they use Volkswagen Genuine Parts[®] to ensure your Volkswagen stays a Volkswagen.

You're in safe hands at your Volkswagen Dealer when it comes to servicing.

The Crafter Kampervan

Volkswagen Group Australia Pty Ltd

895 South Dowling Street, Zetland NSW 2017
ABN 14 093 117 876

Printed in Australia

June 2022

www.volkswagen.com.au

Publication: VWCCRAKAMMY22

Your Volkswagen Dealer.

1. Conditions and exclusions apply, see <https://www.volkswagen.com.au/en/owners-service/warranty.html>. Your rights under this warranty are provided in addition to, and in some cases overlap with, consumer guarantees under the Australian Consumer Law and do not limit or replace them.

2. Volkswagen Roadside Assist membership is provided by AWP Australia Pty Ltd ABN 52 097 227 177 trading as Allianz Global Assistance. Whenever you request roadside vehicle assistance under your membership, you will be making that request to Allianz Global Assistance, who will provide the services under an arrangement with Volkswagen Group Australia Pty Limited ABN 14 093 117 876. The terms and conditions contain exclusions and limitations, please visit <https://www.volkswagen.com.au/en/owners-service/roadside-assist.html>.

3. Volkswagen Care Plans are available for purchase at <https://www.volkswagen.com.au/en/owners-service/care-plans.html> or from participating authorised Volkswagen Dealers for Eligible Vehicles and covers standard items as contained in each scheduled service interval only. The service intervals occur every 15,000 KM/12 months (whichever occurs first) for all models except MY18 to current Crafter vehicles and MY21 onwards Amarok vehicles, which are scheduled to occur every 20,000 km/12 months (whichever occurs first). These Care Plans can only be purchased prior to the first scheduled service and up to 22,500 km/15 months (whichever occurs first) for all models except MY18 to current Crafter vehicles and MY21 onwards Amarok vehicles which is 30,000 km/15 months (whichever occurs first). The timeframe takes effect from when the vehicle is first reported in our system as 'sold'. Discount structure varies by model. For details of what is not included in a scheduled service, please refer to the program terms and conditions.

4. Assured Service Pricing applies to the first 5 standard scheduled services of your vehicle which are scheduled to occur at every 15,000 km/12 month interval (whichever occurs first) or for MY18 to current Crafter vehicles and MY21 onwards Amarok vehicles only, 20,000kms/ 12 month interval (whoever occurs first). Volkswagen will publish the maximum price for a specified Scheduled Service on 1st February each year (or first business day after this date), and pricing will remain fixed for 12 months only. For more details on the Eligible Model's, pricing, items not included and for full terms and condition, please see <https://www.volkswagen.com.au/app/locals/service-pricing-guide>.

Important information

Apple CarPlay[®] is a registered trade mark of Apple Inc. Android Auto[™] is a registered trade mark of Google Inc. MirrorLink[®] is a registered trade mark of Car Connectivity Consortium LLC. Bluetooth[®] is a registered trade mark of Bluetooth SIG Inc.

Volkswagen is distributed by Volkswagen Group Australia Pty Ltd (ABN 14 093 117 876) of 895 South Dowling Street, Zetland NSW 2017. Specifications are as planned at Jun 2022, for Model Year 2022 and are subject to change without notice or obligation. All information in this brochure are correct at the time of publication, however variations may occur from time to time and Volkswagen, in so far as it is permitted by law to do so, shall not be liable in any way as a result of any reliance by any person on anything contained in this brochure. Authorised Volkswagen Dealers will provide up-to-date information on model application, design feature, prices, and availability on request.