

Mahindra **XUV 500**



**ALWAYS UP FOR A
CHALLENGE**

Mahindra

Mahindra

XUV500

ALWAYS UP FOR A CHALLENGE

XUV500 FEATURES:

- AWD SYSTEM FIT TO TACKLE ANY TERRAIN
- 2.5 TONNE BRAKED TOWING
- PUSH BUTTON START/STOP
- FRONT AND REAR FOG LAMPS
- FULLY AUTOMATIC
- 7 INCH LCD SCREEN
- TEMPERATURE CONTROL
- ELECTRIC SUNROOF
- 2.2LTR TURBO PETROL WITH 320NM TORQUE



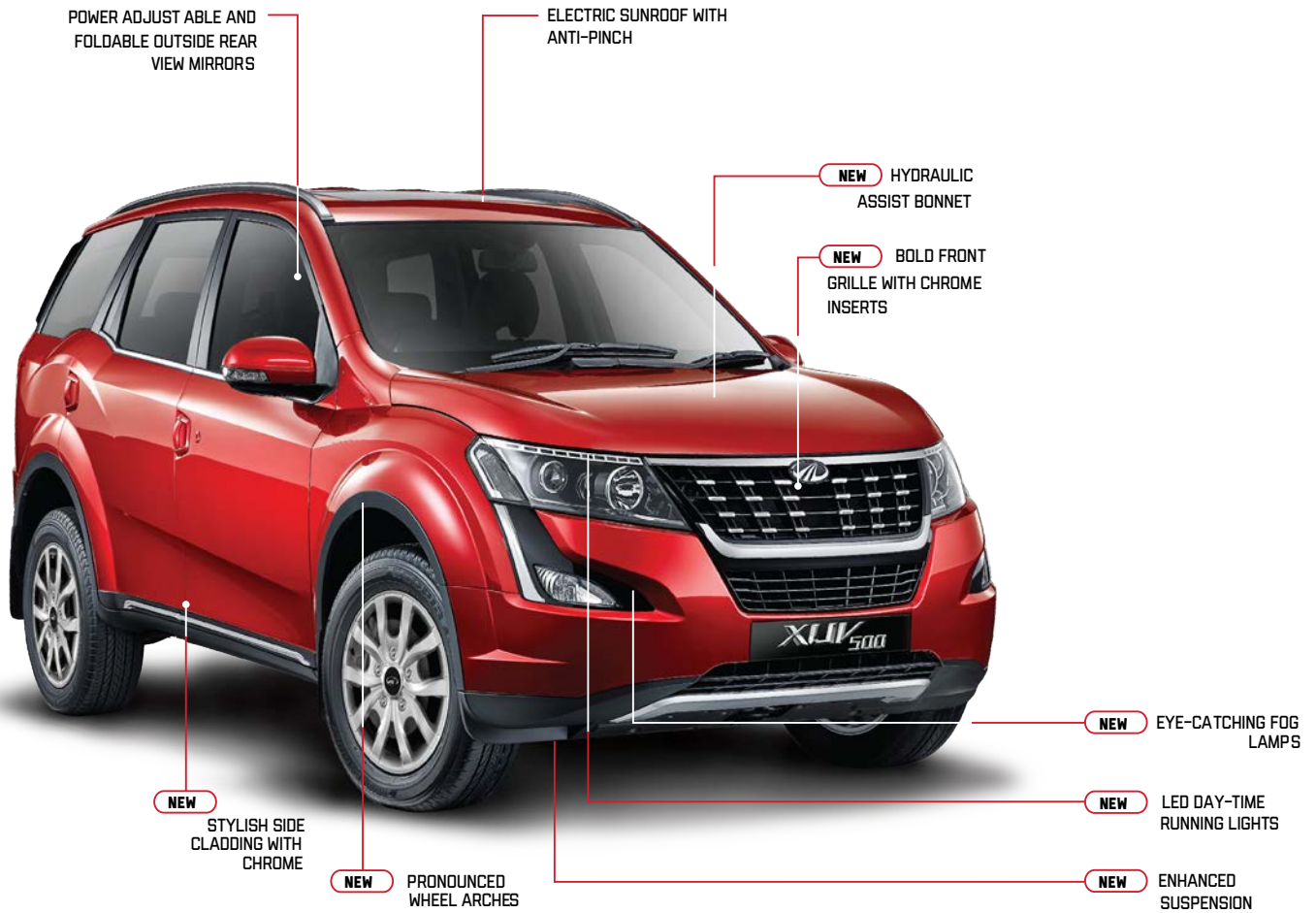


4 | **CAPPED** | **5** | **WARRANTY**
YR | **PRICE** | **YR** | **ROADSIDE**
SERVICING | **ASSIST**



MAHINDRA XUV500

IN STYLE



MODEL FEATURES

	W6 FWD	W10 FWD	W10 AWD
SAT NAV	NO	YES	YES
REVERSE CAMERA	NO Camera / YES Reverse Parking Sensors	YES	YES
LEATHER SEATS	CLOTH SEATS	YES	YES
SUNROOF	NO	YES	YES
KEYLESS ENTRY	NO	YES	YES
START BUTTON	NO	YES	YES

BOLD NEW STYLING. CUTTING-EDGE TECHNOLOGY.

One glance at the New Age XUV500 and you know its captivating new styling breaks the mould of the ordinary.

One look at the intimidating cheetah-inspired exterior, and you'll find it hard to look away. Step in and you're greeted by luxury so grand, you won't want to step out again.

Beneath the hood, improved dynamic torque delivers driving pleasure on any terrain, and the enhanced suspension gives you a superior ride and handling.

Brimming with exciting, cutting edge technology, the New Age XUV500 has been designed for a whole new experience.

The XUV500 incorporates an intelligent All Wheel Drive system that lets you tackle slippery road conditions, such as heavy rains or snow and ice, with ease.

The Interactive Torque Management system automatically redistributes the torque between the front and rear wheels.

This seamless transition from 2WD to AWD without any driver intervention gives you a level of handling prowess unmatched by conventional vehicles.

Up front, the new static bending projector headlamps light up around the corners, while the daytime Running LEDs ensure you can be seen from a distance.

Manoeuvring the XUV500 becomes a breeze with four rear parking sensors included as standard features.

The 7-inch touchscreen incorporates a reverse camera with distance to object display and dynamic guidelines that move as you turn the steering wheel



MAHINDRA XUV500 W10

SAFETY FEATURES



The Stylish New XUV500 is fitted with an alarm and electronic immobiliser to ensure it stays with you. It also comes with a passive keyless entry and locking system so you don't have to fumble with your keys in unfriendly places.

Advanced technology ensures your safety, with six airbags - front, thorax and curtain. Side impact beams and crumple zones have been designed to absorb impact and redirect crash energy around the passenger compartment.

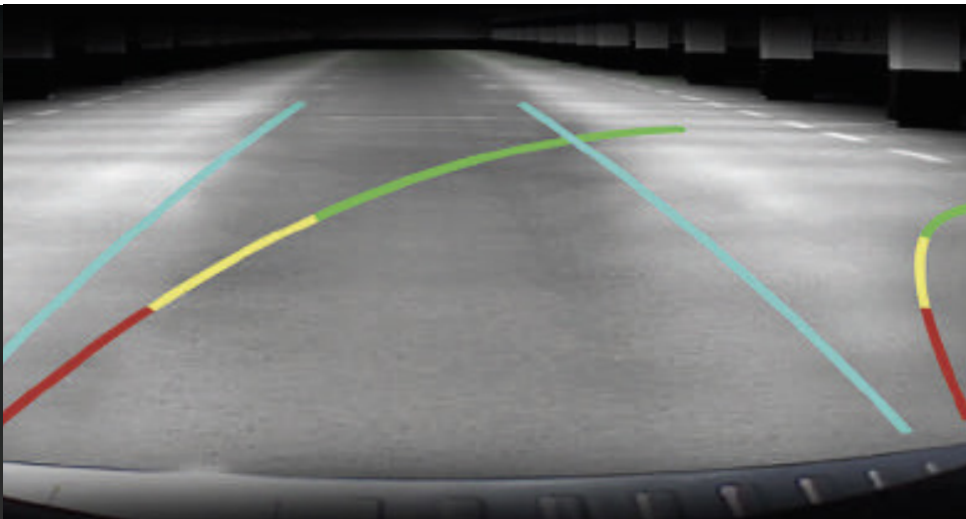




Anti-lock braking system (ABS) with Electronic Brake force Distribution (EBD) will bring you safely to a stop in an emergency in the shortest time possible without losing control.



Electronic Stability Program (ESP) with rollover mitigation will keep your wheels on the ground wherever your XUV takes you.



TELESCOPIC STEERING WHEEL WITH TILT TO ENSURE YOUR PERFECT DRIVING COMFORT



ICY-BLUE MOOD LIGHTING IN THE CABIN



MAHINDRA XUV500

INSPIRED LUXURY

Start your journey with the feeling you've already arrived, with the plush, all-black interiors and luxurious leather seats. Look up at the stars through the new electric sunroof with anti-pinch and sip a refreshing drink from the console cool box in the front console.

An even more powerful 2.2l mHawk engine provides an impressive output of 103kW @ 3750 r/min performance and torque of 330Nm @1600 to 2800 r/min

The monocoque construction provides stability and an excellent power/weight ratio.

High-tech infotainment system with gps navigation, driver information and vehicle management, reverse/park assist

SUNROOF



SPORTY TWIN-POD INSTRUMENT CLUSTER



FULLY AUTOMATIC TEMPERATURE CONTROL



PUSH BUTTON START/STOP





STANDARD XUV500 FEATURES

INTERIOR

- Seven premium seats, all with head rest and lap sash seat belt
- 3rd row separate air conditioning controls
- Charge points in all 3 rows (W10 model)
- 3 ISOFIX child restraints
- All interior overhead lamps are LEDs
- 2nd row is 60/40 split seating
- 3rd row is 50/50 split seating
- 2nd & 3rd row seats fold flat
- Glove compartment large enough to fit 15" laptop
- 6 inch LCD screen with DAB/CD/mp3 player with 4 speakers + 2 tweeters (W6 model)
- 10 cup holders throughout
- Mahindra's easy walk thru access to the third-row seating
- Cargo capacity of 702 Litres
- 7" Touch screen with Sat Nav & Bluetooth® (W10 model)

EXTERIOR

- 2.2ltr 140HP Petrol Engine
- Bosch Generation 9 traction control with Hill Decent Control
- 2.5 Tonne GVM with 2.5 Tonne braked towing
- LED daylight running lamps with side cornering lamps
- Rain sensing wipers & light sensing headlamps
- Front centre storage is air conditioned for beverage cooling
- Front and rear fog lamps



MODEL FEATURES

	W6 FWD	W10 FWD	W10 AWD
SAT NAV	NO	YES	YES
REVERSE CAMERA	NO Camera / YES Reverse Parking Sensors	YES	YES
LEATHER SEATS	CLOTH SEATS	YES	YES
SUNROOF	NO	YES	YES
KEYLESS ENTRY	NO	YES	YES
7" TOUCH SCREEN	NO	YES	YES
START BUTTON	NO	YES	YES
TYRE PRESSURE MONITORING SYSTEM	NO	YES	YES



PEARL WHITE



CRIMSON RED



LAKESIDE BROWN



MOONDUST SILVER



VOLCANO BLACK



MYSTIC COPPER



OPPULENT PURPLE

XUV500 Colours

The XUV500 range is available in 6 stylish colours.

Engine

Type mHAWK 2.2ltr Petrol
Cubic Capacity 2179 CC
Max Gross Power 140HP/103kW @ 4500 RPM
Max Gross Torque 320 Nm @ 2000-3000 RPM

Specifications

Gearbox **Automatic** - 6-speed transmission
Tyres P235/65 R17, radial tubeless
Fuel tank 70 litres

Fuel Economy

(AWD) 11.7 Litres per 100km based on ADR81/02 Combined Cycle
(FWD) 11.0 Litres per 100km based on ADR81/02 Combined Cycle

Suspension

Front McPherson type with anti-roll bar
Rear Multi-link type with anti-roll bar

Brakes

Front Disc and caliper type
Rear Disc and caliper type
Turning circle radius 5.6m

Dimensions (mm)

Wheel base 2700
Overall width 1890
Overall length 4585
Overall height 1785

Luggage Space

3rd row seats folded 702 litres
2nd & 3rd row seats folded 1512 litres

Weight

Gross vehicle weight 2510kg
(AWD) 1915kg
Kerb weight (FWD) 1840kg

Braked Towing 2.5 Tonnes
Un-Braked Towing 750kg

Models

The XUV500 is available in 3 models - **W6 FWD** Petrol Automatic
 - **W10 FWD** Petrol Automatic - **W10 AWD** Petrol Automatic.

*Please note: Specifications, detailing and finishes differ on the various models available.



TOP 5 FEATURES:

- 2.2ltr Turbo Petrol engine with 320Nm Torque
- 2.5 Tonne Braked Towing
- Electric Sunroof
- Start Stop Button
- 702 Litre Boot & 7 Seats

Mahindra

XUV 500

ALWAYS UP FOR A CHALLENGE



MEDIUM IN SIZE - LARGE IN FEATURES

- 7 Premium Seats
- 2nd & 3rd row air conditioning
- Bluetooth phone/music
- Tyre Pressure Sensor
- 320Nm Torque

W10 MODEL ONLY FEATURES

- Reverse camera
- Satellite Navigation
- 7 Leather Seats
- E-manual
- Sunroof
- Keyless entry



www.mahindra.com.au

Mahindra Automotive Australia Pty. Ltd.
4/20 Buttonwood Place, Willawong, Brisbane QLD
4110 Australia.
Phone: (07) 3213 1211 Fax: (07) 3213 1215
Email: info@mahindra.com.au

Dealer Details:

All features and colours mentioned are not available on all models. • Accessories shown are not part of standard equipment.
• Performance figures may differ in conditions other than test conditions. • Vehicle body colour and interiors may differ from the printed photographs • In view of our policy of continuously improving our products, we reserve the right to alter specifications or designs without prior notice and without liability. • Please check model details with our nearest dealer. ^Vehicle tested in accordance with ADR81/02.
Actual fuel consumption and CO2 emission depend on factors such as traffic conditions, vehicle condition and how you drive.
*Terms & Conditions apply, please see our website www.mahindra.com.au for details.