



GWM



GWM UTE

7 YEAR UNLIMITED
KM WARRANTY*
& 5 YEARS ROADSIDE ASSIST





GWM is a world-renowned vehicle manufacturer capable of designing and manufacturing SUVs, utes and powertrains simultaneously.

At GWM, everything we do is grounded in our corporate philosophy: 'improving little by little every day.' From building world-class research and development systems, which enable continuous innovation, to following the 'excessive investment' principle, which drives industry leadership, we relentlessly put our philosophy into practice

To date, the GWM Group have sold millions of cars in over 60 countries, including 45,000 in Australia and New Zealand. Our brand vision is to pioneer global mobility solutions, which use innovative technology to deliver a more pleasurable driving experience.

Through innovation and global collaboration, we continue to improve our vehicles' reliability, safety, performance, design and technology while reducing their environmental impact.



THE GWM UTE.



UP FOR THE CHALLENGE!

7 YEAR UNLIMITED
KM WARRANTY
& 5 YEARS ROADSIDE ASSIST

CRAFTED TO CREATE A STATEMENT.



Newly designed from the ground up, the GWM Ute melds a bold, front grille with wide, wheel arches for a tough, rugged look that turns heads. Boasting perfectly balanced proportions, front to rear, this truck means business.

* Overseas model shown. Specifications may vary.



But the GWM doesn't just look confident, it also has the strength and capability to match.

* Tow bar not standard. Available as genuine GWM accessories.

RUGGED OUTSIDE. LUXURIOUS INSIDE.

Don't be fooled by its rugged exterior, the all-new GWM Ute is as comfortable as they come. Experience a smooth ride, even over rough terrain, thanks to the independent front suspension combined with heavy duty rear leaf suspension for outstanding load-carrying.



▲ Rear seats^



^ Overseas model shown. Specifications may vary.



Discover the thrill of driving in the refined, European designed cabin, with best-in-class legroom and all the features you need. Depending on the model, driver and passengers can also feel the benefit of heated power-adjustable seats, a clever 360 degree camera, a huge 7 inch colour instrument cluster and even voice recognition.



BORN TOUGH. BUILT SMART.

The GWM Ute was born to tackle the toughest jobs but it was also built smart with a full suite of comprehensive safety systems designed to protect occupants and other road users.



▲ Curbside camera



▲ Front, side, centre and curtain airbags ^



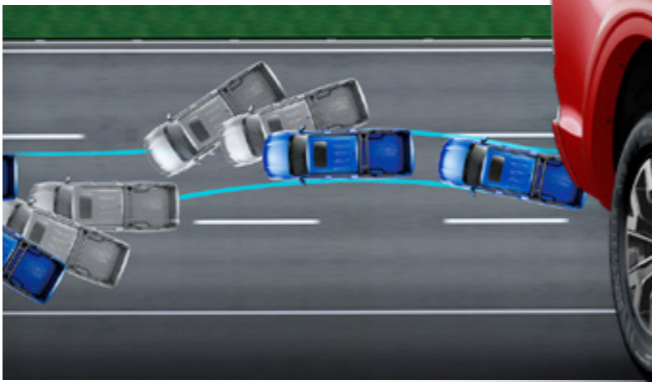
▲ 360 view camera, FCW+AEB, Lane Change Assist & Lane Departure Warning^



▲ LED headlights with daytime running lights



▲ Reversing camera



▲ The latest Bosch Generation 9.3 ESP system, emergency brake assist (HBA), traction control system (TCS)

Advanced safety features such as Autonomous Emergency Braking (AEB), Lane Keep Assist and Adaptive Cruise Control combine to make the GWM Ute the safest car we've ever built. Whether at work or play, you can be sure that GWM is looking out for you.



ALL THE TECH YOU NEED.

Staying connected has never been easier with Apple CarPlay and Android Auto standard across the GWM Ute range and displayed on a crystal clear 9 inch colour touchscreen for infotainment on demand.

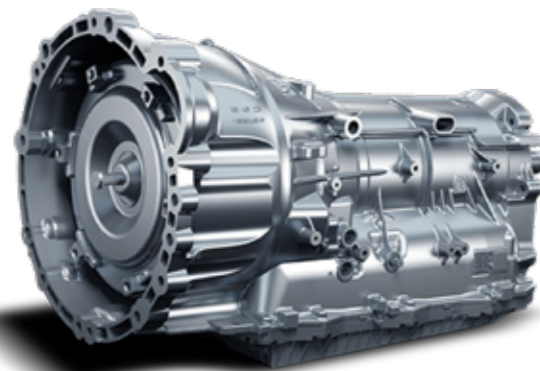
Depending on the model, driver and passengers can also feel the benefit of heated power-adjustable seats, a clever 360 degree camera, a huge 7 inch colour instrument cluster and even voice recognition. The GWM Ute truly is one of the most advanced utes available today.

*Apple CarPlay™ functionality requires iPhone 5 or above. Apple® and iPhone® are registered trademarks of Apple Inc.

^ Cannon and Cannon-L interior shown

POWER AND PERFORMANCE.

Powered by a responsive 2.0 litre turbo diesel engine delivering 120kW and 400Nm, the GWM Ute is a capable partner for just about anything.



When mated to the ZF 8-speed automatic transmission, the driving experience is nothing short of impressive whether carrying a light load or towing the boat or caravan.



The advanced 4x4 system engineered by respected global supplier Borg Warner provides the driver with technology including a rear differential lock and 4WD low range to tackle tough off-road environments with ease.



SPECIFICATIONS	Cannon 4x2	Cannon	Cannon L	Cannon X
Overall dimensions Length x width x height (mm)	5410 x 1934 x 1886			
Wheelbase (mm)	3230			
Ground clearance (mm)	232 (unladen) 194 (laden)			
Approach angle Departure angle	27 25			
Ramp breakover angle	21.1 (unladen)			
Engine	2.0 litre Turbo Diesel with 120kW and 400Nm			
Transmission	ZF 8-speed automatic			
Drivetrain	4x2	4x4 with Torque On Demand and Rear Differential Lock		
Fuel economy	8.3L / 100km	AT 4WD 9.4L / 100km		
Brakes	4 wheel disc brakes Electronic Parking Brake + Auto Hold			
Suspension	Front Double Wishbone and Rear Leaf Spring			
Maximum towing capacity	3000kg			

Configuration	Cannon 4x2	Cannon	Cannon L	Cannon X
Chassis & Steering				
Electric Power Assist Steering	●	●	●	●
Adjustable Steering Column (up & down)	●	●	●	✗
Adjustable Steering Column (tilt/slide)	✗	✗	✗	●
Hydraulic engine mount	●	●	●	●
Exterior				
Front Grill-Grey Inner	●	●	✗	✗
Chrome Plating Front Grill	✗	✗	●	●
Front Bumper (Body Color)	●	●	●	●
Rear Bumper (Body Color)	●	●	●	●
Body Color Exterior Door Mirror	●	●	✗	✗
Body Color Door Handle	●	●	✗	✗
Fender Arch (Body Color)	●	●	●	●
Electroplated Exterior Door Mirror	✗	✗	●	●
Electroplated Door Handle	✗	✗	●	●
Side Steps	●	●	●	●
Sports Bar (Stainless Steel)	✗	✗	●	●
Shark Fin Antenna	●	●	●	●
Rear Recovery Point	●	●	●	●
Easy up\ down tail gate	✗	✗	●	●
Cargo Ladder	✗	✗	●	●
Special Anti-Rust Protection	●	●	●	●
Engine Cover	●	●	●	●
Wheels				
18 inch Premium alloy rim	●	●	✗	✗
18 inch Luxury alloy rim	✗	✗	●	●

KEY ● STANDARD ✗ NOT AVAILABLE ○ OPTION

Configuration	Cannon 4x2	Cannon	Cannon L	Cannon X
Active / Passive Safety				
Keyless Entry + Push-Button Start	●	●	●	●
Secondary Collision Mitigation (Scm)	●	●	●	●
Dynamic Steering Torque System (DST)	●	●	●	●
Vehicle Stability Control (Esc/Esp)	●	●	●	●
Hydraulic Brake Assist System(HBA)	●	●	●	●
Traction Control System (ASR/TCs)	●	●	●	●
Collision Automatic Unlock Function & Fuel Cut Function	●	●	●	●
Hill-Start Assist Control & Hill Decent Control	●	●	●	●
FCW+AEB (Pedestrian, Bicycle)	●	●	●	●
LDW+Lane Keeping Assit	●	●	●	●
Lane Change Assit	●	●	●	●
Door Open Warning	✗	✗	✗	●
ACC	●	●	●	●
Traffic Sign Recognition System+Overspeed Warning System + Speed Limit Reminding System	●	●	●	●
TPMS (Tyre Pressure Monitoring System)	●	●	●	●
Front Sensor -2	✗	✗	●	●
Rear Sensor -2	●	●	●	●
Reverse Camera	●	●	✗	✗
Curbside Carmera (Passenger Side)	●	●	✗	✗
360 Around View Camera	✗	✗	●	●
Dual Front, Side, & Curtain Airbags	●	●	●	●
Front Centre Airbag	●	●	●	●
Seatbelt Unfasten Warning System-All seats	●	●	●	●
Rear Seat Belt With Pre-Tensioner / Load Limiter +Three-Point Rear Central Seat Belt	●	●	●	●
Children Seats ISOFIX Device + 2 Rear Anchor Points	●	●	●	●
Rear Door Child Safety Lock	●	●	●	●
Speed Sensing Central Door Lock (15 Km/H)	●	●	●	●
Emergency Brake Flashing	●	●	●	●
TOD (Central Differential With Lock Function)	●	●	●	●
Rear Axle Differential / Differential Lock (Electric Control)	●	●	●	●
Power Assist Steering Modes (Comfort, Normal, Sport)	✗	✗	✗	●
Driving Modes (Standard, Economy, Sport, 4L)	●	●	●	●
NCAP Frame & Body Structure	●	●	●	●
Engine Immobilizer				
1 Smart Key + 1 ordinary key	●	●	●	✗
2 Smart Keys	✗	✗	✗	●
Engine Immobilizer	●	●	●	●
Remote Central Lock & Automatic Locking Function	●	●	●	●
Air Conditioning				
Manual A/C	●	●	✗	✗
Automatic A/C	✗	✗	●	●
Rear A/C Vents	●	●	●	●
A/C With Pollen Filter	●	●	●	●

Configuration	Cannon 4x2	Cannon	Cannon L	Cannon X
Interior				
Black Interior - Standard	●	●	●	✗
Black Interior - Luxury	✗	✗	✗	●
Scuff Plates	●	●	●	●
Polyster Steering Wheel	●	●	✗	✗
Leather Wrapped Steering Wheel	✗	✗	●	●
Paddle Shifter	●	●	●	●
Electronic Gear Shift	●	●	●	●
3.5 Inch Color Instrument Cluster +Light Adjustable	●	●	●	✗
7 inch Color Instrument Cluster	✗	✗	✗	●
Power Outlet for Dash Cam	●	●	●	●
USB Port for Dash Cam	●	●	●	●
12V Power Outlet	●	●	●	●
Front USB Port (2) + Rear USB charging Port (1)	●	●	●	●
Cruise Control	●	●	●	●
220V Power Outlet	●	●	●	●
Wireless Charging	✗	✗	✗	●
Sunglass holder on drive seat	●	●	●	●
Seats				
Comfort-Tek Leather	●	●	●	✗
Leather	✗	✗	✗	●
Heated Front Seats	✗	✗	●	●
6-way manual adjustable driver's seat	●	●	✗	✗
6-way power adjustable driver's seat	✗	✗	●	●
4-way manual adjustable passenger seat	●	●	●	✗
4-way power adjustable passenger seat	✗	✗	✗	●
Second row 60:40 split seats	✗	✗	✗	●
Rear row armrest	✗	✗	✗	●
Middle headrest second row	●	●	●	●
Windows & Mirrors				
Green Glass	●	●	✗	✗
Privacy Glass	✗	✗	●	●
Front & Rear Electric Windows	●	●	●	●
Driver Window + One Touch Up & Down + Anti-Pinch	●	●	●	✗
Four Window + One Touch Up & Down + Anti-Pinch	✗	✗	✗	●
Power Adjustable Door Mirrors + Manual Folding + Indicator	●	●	✗	✗
Power Adjustable Door Mirrors + Electric Folding + Indicator	✗	✗	●	●
Anti-Glare Rearview Mirror - Manual	●	●	✗	✗
Anti-Glare Rearview Mirror - Automatic	✗	✗	●	●
Hot Line Defroster-rear Window	●	●	●	●
Sun Visor With Mirror- Passenger Side	●	●	●	●

MODELS VARIANTS



Cannon



Cannon L/X

Configuration	Cannon 4x2	Cannon	Cannon L	Cannon X
Entertainment				
Bluetooth Hands-free communication	●	●	●	●
Radio AM/FM	●	●	●	●
9'' Touch LCD Screen	●	●	●	●
Apple Carplay+ Android Auto	●	●	●	●
Voice Recognition	✗	✗	✗	●
4 Speakers (Woofers)	●	●	✗	✗
2 Tweeters + 4 Woofers	✗	✗	●	●
Lighting				
LED Headlights (High & Low Beam)	●	●	●	●
Automatic Headlights	●	●	●	●
Electric Height Adjustment Headlights	●	●	●	●
LED indicator lamp-Waterflow style	●	●	●	●
Headlight With Follow Me Home Function	●	●	●	●
Front fog lamp with steering automatic lighting	●	●	●	●
Daytime Running Lights	●	●	●	●
Rear Fog Lights	●	●	●	●
LED Tail Light	●	●	●	●
High Position Brake Lights-LED	●	●	●	●
Ceiling Light	●	●	●	●
Foot Light	✗	✗	✗	●
Warning				
Speed Warning (Warning Speed Manual Set)	●	●	●	●
Triangular Warning Sign	●	●	●	●

COLOURS



PURE WHITE



PITTSBURGH SILVER



SCARLET RED



BLUE SAPPHIRE



CRYSTAL BLACK



SLATE GREY

7 YEAR UNLIMITED KM WARRANTY & 5 YEARS ROADSIDE ASSIST



For more information visit gwmhaval.com.au.

Great Wall Motors Australia (GWMA) reserve the right to alter vehicle specifications and equipment levels without notice.

Some equipment featured on vehicles in this brochure may not be available or may be optional.

To the extent permitted by law, GWMA shall not be liable to any person as a result of reliance on the content of the brochure.

Always check with your local GWM Dealer for the latest product specifications.

Information in this brochure is current as at 01/05/2022.

Edition Code: GWMA 01-05-2022

Copyright © GWMA 2022. All rights reserved.

