

 SUZUKI

NEW **IGNIS**





### ***THE ONLY ULTRA COMPACT SUV***

Want something that stands out, but fits anywhere? Introducing the only ultra compact SUV. With bold distinctive styling and urban functionality, there's nothing else like it on the planet. Drive it for yourself and see where it takes you.



## **URBAN PROOF**

The new Ignis has been designed to handle anything the city can throw at it—and coming from Japan, that says a lot. With its ultra compact body size, it easily manoeuvres through narrow city streets—and with SUV looks and crossover capabilities, you'll hop up curbs like a pro.



## **ICONIC DESIGN**

The new Ignis has a distinctly Japanese design. Eye-catching, head-turning, bold—when you drive the Ignis, prepare to get noticed. From every angle it radiates a unique personality and presence—just like you! But unlike you, it has exterior detailing and funky colour options. Well, maybe you do have funky colour options.

## COMPACT, YET SPACIOUS

Don't be fooled by its ultra compact size—the new Ignis has plenty of flexible luggage space, making it perfect for a weekend away.

### CARGO SPACE WITH ADJUSTABLE CAPACITY TO FIT YOUR LUGGAGE

The Ignis boasts luggage space volume measuring 505L\* when the rear seats are folded down. The 50:50 split (GLX) or 60:40 split (GL) rear seats can be folded down from the luggage side as well, giving you plenty of options for various kinds of luggage.

\*Measured using the German Association of the Automotive Industry (VDA) method. Items are loosely placed in the rear storage area for illustrative purposes only and should be properly secured while driving.



## DISTINCTIVE INTERIOR

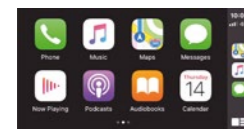
With a sleek, premium look and flashes of funky colour, the interior of the new Ignis really enhances its urban style.



### SMARTPHONE LINKAGE DISPLAY AUDIO (SLDA)

The audio system features a touch-panel display as intuitive as a smartphone. Connect your smartphone via Bluetooth® or USB cable to use your apps through the display, which is also equipped with a radio, rear-view camera and navigation\* functions.

\*Bluetooth is a registered trademark of Bluetooth SIG, Inc. For details of equipment availability, please refer to the major equipment list.

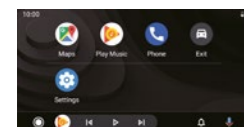


### APPLE CARPLAY®

Apple CarPlay lets you use your iPhone to make calls, access your music, send and receive messages, and get directions all with your voice through Siri or by tapping on the audio display.

\*For more details including iPhone models compatible with Apple CarPlay see: <http://www.apple.com/ios/carplay/>

\*Apple, Apple CarPlay and iPhone are trademarks of Apple Inc., registered in the U.S. and other countries.



### ANDROID AUTO™

Android Auto™ extends the Android platform into the car in a way that's purpose-built for driving. It is designed to minimise distraction so you can enjoy driving with Google services like Google Maps and Google Play Music. Get the Android Auto app on the Google Play Store\*.

\*Most phones with Android 5.0+ works with Android Auto. [https://support.google.com/androidauto/answer/6348019?hl=en&ref\\_topic=6140477](https://support.google.com/androidauto/answer/6348019?hl=en&ref_topic=6140477)

\*Google, Android, Google Play and Android Auto are trademarks of Google LLC.



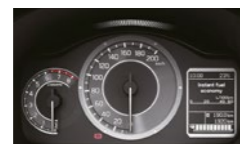
### MIRRORLINK

MirrorLink lets various applications on your smartphone appear on the vehicle's touchscreen

display, allowing you to access your smartphone's features.

\*MirrorLink™ is compatible with the smartphones listed at the following link: <https://mirrorlink.com/phones>

\*MirrorLink™ is a registered trademark of the Car Connectivity Consortium LLC.



### METER CLUSTER

An information display in the fashionable meter cluster keeps you

informed of such basic information as fuel economy, outside temperature, time of day, fuel consumption and driving range. Switches on the steering wheel and beside the meter cluster let you choose what information is displayed.



### AUDIO CONTROL SWITCHES

User-friendly switches on the steering wheel allow control of audio volume,

audio modes such as radio and Bluetooth®, and the hands-free phone function.

\*The accent colour differs depending on the body colour.



### COLOUR VARIATIONS

The bold contrast of black and white on the instrument panel is simple in composition but leaves a bold impression. Gunmetal grey and blue accents on the centre console and door grips add a sophisticated feel to the interior atmosphere.



## **OUTSTANDING DRIVING PERFORMANCE**

With its responsive engine and hill hold and descent control, the new Ignis puts the excitement back into driving. The Ignis balances responsive performance with outstanding fuel efficiency of just 4.7L/100km.\*

A next-generation, stronger-but-lighter chassis provides a stable framework while reducing drag.

A more rigid, yet lighter suspension smooths out shocks and enables more responsive and controlled handling, while large diameter tyres and a minimum turning radius of just 4.7m make the Ignis easy to manoeuvre down narrow roads or in tight car parks.



### **1.2 PETROL ENGINE**

The 1.2 litre petrol engine offers the best of two worlds—high output and good fuel economy. Despite the engine's small displacement, its heightened compression ratio results in better thermal efficiency for powerful driving. Knocking, which can result from high compression, is suppressed by the engine's augmented cooling performance. For good fuel economy without sacrificing output and torque, fuel combustion has been enhanced, friction has been reduced and efforts have been made to make the engine light and compact.



### **SUSPENSION**

The lightweight, rigidly mounted suspension effectively absorbs road bumps for a smooth, comfortable ride. It also contributes to light steering that feels stable and direct for responsive handling.



### **LIGHT AND RIGID HEARTECT PLATFORM**

The smoothly curving frame increases underbody stiffness that delivers excellent fundamental vehicle performance while also enhancing collision safety by efficiently dispersing energy. Despite the vehicle's compact SUV design, this platform enables optimal placement of components for a comfortably wide cabin and ample cargo space.



Overseas model shown

1. Glove box
2. Centre console tray and cup holders
3. Front door pockets and bottle holders
4. Rear door bottle holders
5. Rear console cup holder

## **FUN, YET FUNCTIONAL**

Flexible, functional, useful. There's more to the new Ignis than you think.

### **SEAT HEIGHTS DESIGNED FOR COMFORT**

An elevated seating position makes it easier to get in and out and also creates a higher eye point for better visibility.



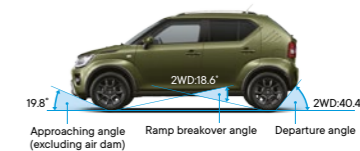
### **HIGH GROUND CLEARANCE**

High 180mm ground clearance gives the Ignis an authentic SUV look despite its small size.



### **OUTSTANDING MANOEUVRABILITY AND HIGH TRAVELLING PERFORMANCE**

With a minimum turning radius of 4.7m, the Ignis is easy to manoeuvre on narrow roads and parking lots. Large-diameter tyres and high ground clearance also provide peace of mind when driving over uneven or bumpy roads.







## ***ENJOY EVERY MOMENT***

Every time you drive the new Ignis, the city transforms into an adventure waiting to happen. You'll feel the fun personality of the Ignis every time you start the engine, and once you start driving you won't want to stop. Except for stop signs and stop lights—you should stop for those. But wherever the Ignis takes you, it's a journey to remember.

# IGNIS<sup>GL</sup>



## IGNIS GL

- 1.2L Dualjet engine
- 4.7L/100km fuel economy manual\*
- 4.9L/100km fuel economy automatic\*\*
- 5-speed manual or automatic CVT transmission
- 7-inch multimedia touchscreen with satellite navigation, reversing camera, Apple CarPlay® and Android Auto™
- Bluetooth® & iPod® USB connectivity with steering wheel audio controls
- 4 x speakers
- Cruise control
- 60:40 split rear seats
- Six airbags
- ESC, ABS, EBD, & BA
- 15" steel wheels
- Front fog lights
- Roof rails

# IGNIS<sup>GLX</sup>



## IGNIS GLX

(Additions to GL)

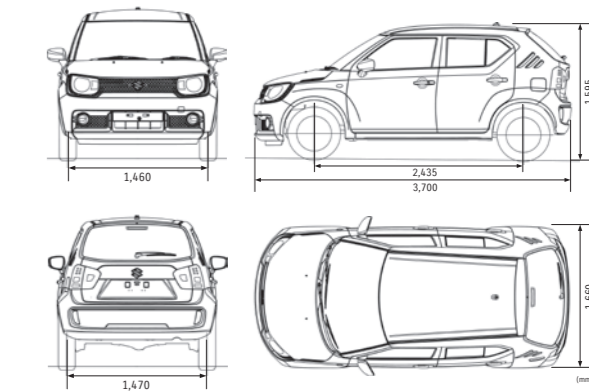
- Digital climate control
- Keyless start system
- 50:50 fold rear seats
- Sliding and reclining rear seats
- 2 x tweeters
- 16" alloy wheels
- Automatic LED headlights
- Daytime running lights
- Privacy glass

# SPECIFICATIONS

	IGNIS GL	IGNIS GLX
<b>POWERTRAIN</b>		
Engine	1.2L Dualjet	
Number of cylinders	4	
Piston displacement (cm³)	1242	
Bore x stroke (mm)	73.0 x 74.2	
Compression ratio	12.5	
Maximum output (kW/rpm)	66/6,000	
Maximum torque (Nm/rpm)	120/4,400	
Fuel distribution	Multipoint injection	
Fuel Tank Capacity (L)	32	
<b>DIMENSIONS</b>		
Overall length (mm)	3,700	
Overall width (mm)	1,660	
Overall height (mm)	1,595	
Wheelbase (mm)	2,435	
Tread (mm)	Front	1,460 (175/65R15) 1,460 (175/60R16)
	Rear	1,470 (175/65R15) 1,470 (175/60R16)
Minimum turning radius (m)	4.7	
Minimum ground clearance (mm)	180	
Seating capacity (persons)	5	
Luggage capacity (L)	Max. volume	1,101 1,104
	Rear seatback folded	505 516
	Rear seatback raised	271 264
Kerb weight (kg)	820 865	865
Gross vehicle weight (kg)	1,330	
<b>TRANSMISSION</b>		
Type	5MT	CVT
	1st	3.545
	2nd	1.904
	3rd	1.240
	4th	0.914
	5th	0.717
	Reverse	3.272 3.771
Final gear ratio	4.294	3.757
<b>FUEL CONSUMPTION*</b>		
Fuel consumption (L/100km) MT/AT	4.7	4.9
CO2 emissions (G/km) MT/AT	107	114
<b>CHASSIS</b>		
Steering	Rack & Pinion	
	Front	Ventilated disc
	Rear	Drum, leading & trailing
Brakes	MacPherson strut with coil spring	
Suspension	Torsion beam with coil spring	
<b>WHEELS</b>		
Tyres (Width/Profile)	175/65	175/60
Wheel Size	16"	16"
Wheel Type	Steel	Alloy
Spare	Space Saver	
<b>EXTERIOR</b>		
Front grille	Black with Chrome Accent	
Outside door handles	Body coloured	Std
Black-coloured A and B pillars	Std	Std
Tailgate opener	Handle-operated	Std
Roof rails	Std	Std
<b>VISIBILITY</b>		
Headlamps	Halogen	LED Projector
Guide me light function	Std	Std
Headlamp leveling device	Automatic	—
Automatic lamps	—	Std
Fog lamps	Front	Std
Daytime Running Lamps	—	LED
Privacy glass	—	Std
Wipers	Front: 2 speeds (low, high) + intermittent + washer	Std
	Rear: 1 speed + intermittent + washer	Std
Outside door mirrors	Body coloured	Std
	Electrically adjustable	Std

	IGNIS GL	IGNIS GLX
<b>STEERING AND INSTRUMENT PANEL</b>		
	Leather covered	Std
	With audio controls	Std
	With cruise control	Std
	With speed limiter control	Std
3-spoke steering wheel	With hands-free phone control	Std
	Tilt-adjust	Std
	Digital clock	Std
	Outside temperature	Std
	Fuel consumption	Std
Information display	Driving range	Std
	Average speed	Std
	Gear position indicator (CVT)	Std (CVT)
Meter illumination	Std	Std
Centre & side louvre bezels	Silver	Std
<b>DRIVING AMENITIES</b>		
Power windows	Front	Std
	Rear	Std
Remote-control door locks	With hazard lamp answerback function	Std
Keyless push start system	—	Std
Air conditioner	Manual	Std
	Automatic	—
Audio	Speakers x 4	Speakers x 4, Tweeters x 2
MP3/WMA + Bluetooth	Std	Std
Satellite Navigation	Std	Std
Apple CarPlay® & Android Auto™	Std	Std
Cruise control	Std	Std
Speed limiter	Std	Std
<b>INTERIOR</b>		
Cabin lights	Central cabin light (3-position)	Std
Cup holders	Front x 2	Std
	Rear x 1	Std
	Front x 2	Std
Bottle holders	Rear x 2	Std
Centre-lower box	Std	Std
USB port	Instrument panel	Std
12V accessory socket	Instrument panel	Std
<b>SEATS</b>		
Front seats	Seat height adjuster (driver's side)	Std
	Seatback pocket (passenger's side)	—
	60:40-split single-fold	Std
	50:50-split single-fold	—
	Slide and reclining function	Std
Rear seats	Head restraint x 2	Std
	Head restraint x 3 (separate type)	—
Seat upholstery material	Fabric	Fabric
<b>LUGGAGE</b>		
Luggage area cover	Std	Std
<b>SAFETY, SECURITY, AND ENVIRONMENTAL COMPATIBILITY</b>		
ABS with EBD function	Std	Std
ESC	Std	Std
Hill hold control (CVT)	Std (CVT)	Std
Brake assist function	Std	Std
SRS front dual airbags	Std	Std
SRS side airbags	Front	Std
SRS curtain airbags	Std	Std
Pedal release system	Brake and clutch	Std
	Front: 3-point ELR seatbelts with pretensioners, force limiters	Std
Seatbelts	Rear: 3-point ELR seatbelts x 2	—
	Rear: 3-point ELR seatbelts x 3	Std
ISOFIX child seat anchorages	x 2	Std
Child seat tether anchorages	x 2	—
	x 3	Std
Reversing Camera	Std	Std

# DIMENSIONS



# COLOURS



Pure White  
(Blue interior accents)

Ivory Pearl<sup>†</sup>  
(Silver interior accents)



Mineral Gray<sup>†</sup>  
(Blue interior accents)

Super Black<sup>†</sup>  
(Blue interior accents)



Khaki Pearl<sup>†</sup>  
(Silver interior accents)

Fervent Red<sup>†</sup>  
(Silver interior accents)

\*ADR 81/02 results for manual transmission. \*\*ADR 81/02 results for automatic transmission. NEDC Fuel Consumption figures may not mimic real-life driving conditions and should be considered for comparison against other vehicles only. Apple CarPlay® is a registered trademark of Apple Inc. Android Auto is a trademark of Google Inc.

\*NEDC Fuel Consumption figures may not mimic real-life driving conditions and should be considered for comparison against other vehicles only.

†Additional premium/metallic paint charge. All care is taken to ensure the accuracy of this brochure at the time of publication approval. Specifications, features, prices and model availability may vary from state to state and may change without notice. Always consult your authorised Suzuki Dealer or refer to suzuki.com.au for the latest details on all models. SUZUKI will not be held liable for any loss as a result of reliance on the content of this brochure, whether in negligence or otherwise. Vehicles are shown for illustrative purposes only and may not depict exact Australian specifications.



FOR **FUN'S** SAKE