



Nissan X-TRAIL
Prepare to be moved



Nissan X-TRAIL. Prepare to explore.

Introducing X-TRAIL, Nissan's mid-sized family adventure SUV, available with either e-POWER* – a technology that goes beyond traditional hybrid powertrains for a smooth and quiet EV-like driving experience, or a traditional and efficient 2.5L petrol engine.

For superior control, choose e-POWER* which includes the electric-drive four-wheel-control technology, e-4ORCE*.

X-TRAIL is a spacious SUV with up to seven seats¹, and everything you need to keep your family safe and comfortable with advanced Nissan Intelligent Mobility safety technologies. With cutting-edge connectivity to keep everyone entertained, X-TRAIL makes family friendly adventures a breeze.



X-TRAIL Ti-L e-POWER model with 20" alloy wheels, premium paint and black painted roof shown throughout (unless otherwise stated).

* Available on ST-L, Ti & Ti-L e-POWER models only.
^ Available on 2.5L ST, ST-L & N-TREK 4x4 models only.

Never compromise on style in the Nissan X-TRAIL

Get noticed wherever you go with sleek LED headlights, distinctive and imposing front air vents and robust, yet crafted lines. Up front, the unmistakable Nissan V-motion grille bears the familiar signature of Nissan's exciting design DNA, to show that this family crossover refuses to blend into the background.



A

20" alloy wheels[^]

B

Rear LED signature lamps

C

Strong front fascia

D

Front LED signature headlamps

E

e-POWER badge^{*}

F

e-4ORCE badge^{*}



[^]Available on Ti-L e-POWER model only.
^{*} Available on e-POWER models only.



Close the door on the chaos outside

With three large interior display screens* to supplement your drive, you're guaranteed to experience Nissan technology at its best.

Enjoy a 12.3" TFT Advanced Drive-Assist® Display instrument cluster, 12.3" touchscreen display* with satellite navigation* and a 10.8" Head-Up Display as you settle into your comfortable, premium quilted Nappa leather-accented* seats.

Wondering where to place your belongings? Don't miss the storage space beneath the floating centre console. Inside the X-TRAIL's cabin, it's all about quality details – the relaxing atmosphere of ambient lighting#, the soft feel of premium materials and the seamless convenience of wireless Apple CarPlay®^ and wireless smartphone charging°.



12.3" TFT Advanced Drive-Assist® Display instrument cluster and 10.8" Head-Up Display



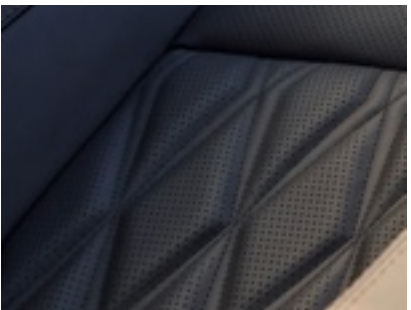
12.3" touchscreen display* with wireless Apple CarPlay®^



Satellite navigation*



Wireless smartphone charging°



Nappa leather-accented* seats



Ambient door trim lighting on Ti-L

* Not available on ST
^ Available on N-TREK, Ti & Ti-L models only.
Leather-accented features and upholstery may contain synthetic material. Minor trim variations may occur from time to time. Nappa leather-accented seats available on Ti-L models only.
^ CarPlay is a registered trademark of Apple Inc. Android Auto is a trademark of Google LLC. Compatible device required. Wired connections require a USB connection. Wireless connection not available on ST.
° Available on Ti & Ti-L models only.
° Compatible device required. Not available on ST

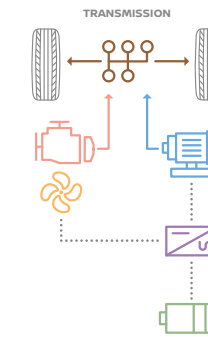


Nissan e-POWER: Driven by electric, fuelled by petrol. No need to plug in to recharge.

With e-POWER*, pioneering doesn't have to pause. e-POWER* is an innovative EV-like system which includes two electric motors, a petrol engine and a lithium-ion battery to achieve an EV-like driving experience. The result is almost instant acceleration response and a quiet driving sensation without the need to plug in or recharge. Just exhilarating and stress-free driving with no compromise on fuel economy.

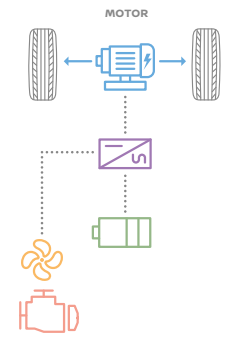
CONVENTIONAL HYBRID

Wheels are driven by petrol engine and electric motor



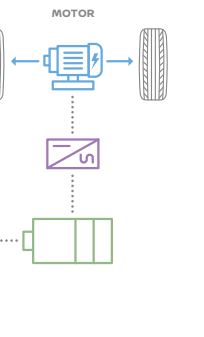
e-POWER

Wheels are driven by electric motor only



100% EV

Wheels are driven by electric motor only



Simplify your drive with e-Pedal Step[^]

Experience a more intuitive way to drive. e-Pedal Step[^] gives you the option to accelerate and decelerate effectively with just the accelerator pedal at speeds above 10km/h, leaving the brake pedal for harder braking or coming to a complete stop.

* e-POWER is available on ST-L, Ti & Ti-L models only.

[^] e-Pedal Step may not be suitable under all driving conditions, correct operation is the responsibility of the driver. Available on e-POWER models only.

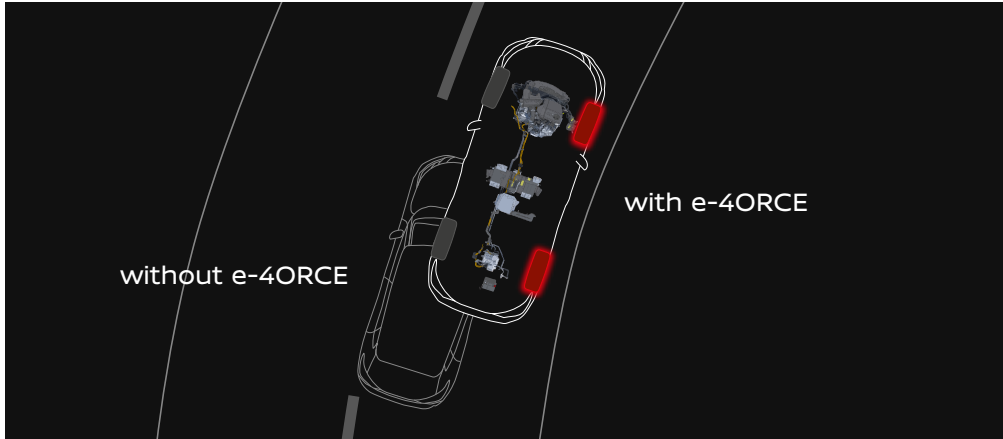
Elevate your 4x4 experience with e-4ORCE

Playgrounds are not meant to have boundaries. Take on new terrains in confidence with Nissan X-TRAIL e-POWER's electric-drive four-wheel-control technology, e-4ORCE. e-4ORCE delivers the perfect balance between powerful and unprecedented control, with a smooth ride for all thanks to superior handling on any surface. Dial up the adventure even further with up to five selectable drive and terrain modes[^], including Auto, Sport, Eco, Off-Road and Snow.

e-4ORCE is paired with e-POWER and available on ST-L, Ti & Ti-L models.



Five selectable drive and terrain modes[^]



[^] 4x4 models only.





2.5L petrol engine offering excitement, without compromise

X-TRAIL is offered with a 2.5L four cylinder petrol engine with 135kW of power and 244Nm of torque. Available in standard front-wheel-drive or optional Intelligent 4x4*, all models are fitted with a Continuously Variable Transmission along with steering wheel mounted paddle shifters to enhance your driving experience. 2.5L X-TRAIL models are capable of towing up to 2,000kg maximum braked towing capacity‡.

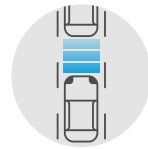
* Available on 4x4 models only.
‡ Towing capacity is subject to towbar/towball capacity and is based on the fitment of a Genuine Nissan towbar. Towing capacity figure described is a maximum figure. Actual towing capacity depends on the laden mass of the vehicle, driving conditions, fitment of any accessories or towing equipment limitations including the maximum towball download.
X-TRAIL Ti-L 2.5L model with premium paint and black painted roof shown.

Safety at heart

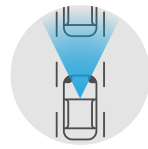
The Nissan X-TRAIL is equipped with advanced Nissan Intelligent Mobility technologies that combine to help you see more, sense more and can even step in to respond to potential hazards.

ProPILOT^Δ allows you to enjoy your highway commute by automatically keeping up with traffic flow and helping keep you centred in your lane through a combination of automated steering, acceleration and braking. This intelligent safety technology helps ease driver workload in highway traffic and long commutes at the push of a button.

Intelligent Around View[®] Monitor with Moving Object Detection^{*Δ} provides all-round reassurance from a 360 degree view of your car with four cameras mounted around the vehicle to provide front, rear and kerbside views.



INTELLIGENT FORWARD COLLISION WARNING^Δ
Keeps an eye on up to two vehicles ahead of X-TRAIL. If the system detects sudden deceleration ahead, it will give you audible and visual warnings to respond and slow down.



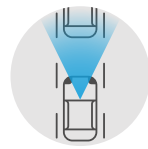
INTELLIGENT EMERGENCY BRAKING^Δ
By monitoring speed and distance between X-TRAIL and the vehicle ahead, Intelligent Emergency Braking^Δ can automatically engage the brakes to help avoid a frontal collision or lessen the severity of an impact. And when it detects a pedestrian at the crosswalk, it can stop you in your tracks. The technology also features cyclist and junction detection for added piece of mind.



INTELLIGENT REAR AUTOMATIC BRAKING^Δ
Helps you back-up with confidence by watching behind you during reversing manoeuvres. If a large stationary object is detected behind your vehicle, the system can automatically engage the brakes to help avoid a rear collision or lessen the severity of an impact.



INTELLIGENT CRUISE CONTROL^Δ
Keeps a set distance between X-TRAIL and the vehicle ahead by measuring space and controlling acceleration and deceleration to automatically maintain a suitable following distance within your set speed.



INTELLIGENT LANE INTERVENTION^Δ
Avoid unintentional lane departure. When lane markings are clear, Intelligent Lane Intervention^Δ can keep you centred in your lane and can tap the brakes to help gently guide you back

* Not available on ST.

^Δ ProPILOT cannot prevent collisions. It is the driver's responsibility to be in control of the vehicle at all times. Always monitor traffic conditions and keep both hands on the steering wheel. System operates only when lane markings are detected. Does not function in all weather, traffic and road conditions. System has limited control capability and the driver may need to steer, brake or accelerate at any time to maintain safety. See Owner's Manual for safety information. Not available on ST.

^Δ Driver's aid(s) only, not a substitute for safe driving. Always monitor your surroundings.



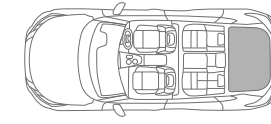
Discover the details that make a difference

Details designed to make your journeys smoother. X-TRAIL is available with tri-zone climate control* for optimal cabin comfort, along with built-in rear door sunshades^ that neatly roll away.

When it comes to cargo, five-seat models feature Nissan's Divide-N-Hide® configurable cargo system~, a system of adaptable boards to contain items of various shapes and sizes. Smaller items can be retained in the under-shifter storage, or the butterfly opening centre console for easy access for second row passengers.



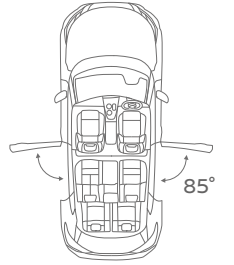
ISOFIX compatible second row outboard seats



Cargo capacity: second row upright, to roof line.

e-POWER
5-seat 575L

2.5L petrol
5-seat 585L
7-seat 465L



85° rear door opening



Floating centre console with under-shifter storage



Butterfly opening centre console



Built-in rear door sunshades^



Second row USB charging ports



Tri-zone climate control*



* Available on Ti & Ti-L models only.
^ Available on N-TREK & Ti-L models only.
~ Not available on ST models. Not available on ST-L & N-TREK 7-seat models.

ST



ST-L



2.5L model shown

Standard key features:

- Intelligent Emergency Braking with junction assist & pedestrian/cyclist detection
- Intelligent Rear Automatic Braking
- Intelligent Blind Spot Intervention
- Intelligent Lane Intervention
- Intelligent Cruise Control
- Rear view camera & rear parking sensors
- Traffic Sign Recognition
- High Beam Assist
- 7.0" TFT Advanced Drive-Assist® Display instrument cluster
- 8.0" touchscreen display
- Apple CarPlay®^ & Android Auto™^
- 4 USB ports (2 USB-A / 2 USB-C)
- 17" alloy wheels
- LED head and tail lights
- Electronic shift by wire
- Electric park brake
- Paddle shifters
- Power adjustable, power folding, heated door mirrors

Optional features

- Intelligent 4x4 with 5 drive and terrain modes
- 7-seat capacity (4x4 models only)

^ CarPlay is a registered trademark of Apple Inc. Android Auto is a trademark of Google LLC. Compatible device required. Wired connections require a USB connection.
 ^ ProPILOT cannot prevent collisions. It is the driver's responsibility to be in control of the vehicle at all times. Always monitor traffic conditions and keep both hands on the steering wheel. System operates only when lane markings are detected. Does not function in all weather, traffic and road conditions. System has limited control capability and the driver may need to steer, brake or accelerate at any time to maintain safety. See Owner's Manual for safety information.
 * Leather-accented features and upholstery may contain synthetic material. Minor trim variations may occur from time to time.
 ° Compatible device required

ST-L includes ST features plus/or:

- ProPILOT^Δ
- Intelligent Around View[®] Monitor with Moving Object Detection
- 12.3" touchscreen display
- Satellite navigation
- Wireless Apple CarPlay^{®^}
- Wireless smartphone charger[°]
- Leather-accented* seat trim
- Leather-accented* steering wheel
- 18" alloy wheels
- Dual-zone automatic climate control
- Privacy glass (second row & rear windows)
- Front parking sensors
- Automatic dimming internal rear view mirror
- 10-way power adjustable driver seat (including 2-way power lumbar)
- Divide-N-Hide[®] configurable cargo system (5-seat models only)
- 40/20/40 split folding second row seat
- Sliding second row seats
- Heated front seats

Optional features

- e-POWER with e-4ORCE
- Intelligent 4x4 with 5 drive and terrain modes (2.5L models only)
- 7-seat capacity (4x4 models only)

N-TREK



N-TREK includes ST-L features plus/or:

- 12.3" TFT Advanced Drive-Assist® Display instrument cluster
- 10.8" Head Up Display
- Automatic rain-sensing front wipers
- N-TREK 18" alloy wheels
- N-TREK front bumper
- N-TREK rear bumper
- Front fog lights
- Black V-motion front grille
- Black roof rails
- Black door mirrors
- Black door handles

Optional features

- Intelligent 4x4 with 5 drive and terrain modes
- 7-seat capacity (4x4 models only)
- Black painted roof[#]

^{*} Leather-accented features and upholstery may contain synthetic material. Minor trim variations may occur from time to time.
[#] Black painted roof available at additional cost

Ti



2.5L model shown

Ti includes ST-L features plus/or:

- Intelligent 4x4 with 5 drive and terrain modes
- 12.3" TFT Advanced Drive-Assist® Display instrument cluster
- 10.8" Head-Up Display
- Intelligent Rear View Mirror
- Leather-accented* seat trim
- 19" alloy wheels
- Tilt & slide power sunroof with panoramic glass roof
- Tri-zone automatic climate control
- Adaptive Driving Beam headlights
- Automatic rain-sensing front wipers
- Motion sensing power tailgate

Optional features

- e-POWER with e-4ORCE
- Black painted roof[#]
- Light grey leather-accented* seat trim

Ti-L



2.5L model shown with 19" alloy wheels

Ti-L includes Ti features plus/or:

- Quilted Nappa leather-accented* seat trim
- Bose® 10 speaker premium audio system
- Built-in rear door sunshades
- Heated steering wheel
- Heated second row outboard seats
- Ambient interior lighting (console tray & door trim)
- Memory system (driver seat & door mirrors)
- External rear vision mirrors with tilt to reverse

e-POWER only

- 20" alloy wheels standard / 19" alloy wheels optional

Optional features

- e-POWER with e-4ORCE
- Black painted roof#
- Tan quilted Nappa leather-accented* seat trim

* Leather-accented features and upholstery may contain synthetic material. Minor trim variations may occur from time to time.
Black painted roof available at additional cost

CHOOSE YOUR EXTERIOR PAINT COLOUR

SINGLE TONE COLOURS



Solid White



Ivory Pearl#



Brilliant Silver#



Ceramic Grey#



Gun Metallic#



Diamond Black#



Champagne Silver#



Scarlet Ember



Caspian Blue#

TWO TONE COLOURS



Ivory Pearl with black roof~



Ceramic Grey with black roof~



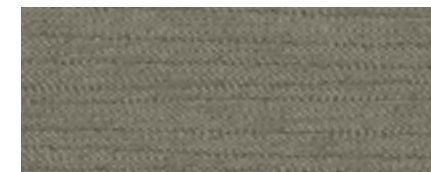
Champagne Silver with black roof~ (available on e-POWER models only)



Caspian Blue with black roof~

Refer to specifications at rear of brochure for paint applicability across models.

CHOOSE YOUR INTERIOR TRIM



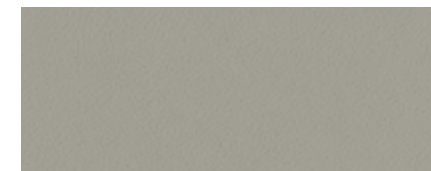
Light charcoal seat trim. Available on ST.



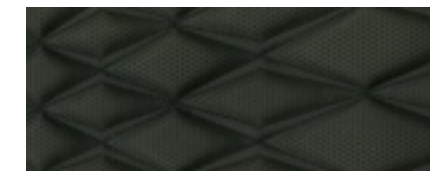
Black synthetic leather seat trim. Available on ST-L. & N-TREK



Black genuine leather-accented* seat trim. Available on Ti.



Light grey genuine leather-accented* seat trim. Available on Ti.



Black quilted Nappa leather-accented* seat trim. Available on Ti-L.



Tan quilted Nappa leather-accented* seat trim. Available on Ti-L.

Premium paint available at extra cost.

~ Black painted roof available on N-TREK, Ti & Ti-L models at additional cost.

* Leather-accented features and upholstery may contain synthetic material. Minor trim variations may occur from time to time. Leather-accented seat trim applies to first & second rows only.

Nissan has taken care to ensure that the colour swatches presented here are the closest possible representations of actual vehicle colours. Swatches may vary slightly due to the printing process and whether viewed in daylight, fluorescent or incandescent light. Please see the actual colours at your local Nissan Dealer.

Your weekend adventure awaits



Nissan Genuine Accessories

Personalise your Nissan X-TRAIL with our range of Nissan Genuine Accessories, designed to add style, functionality and protection.

Style

Featuring black air intake finishers, smoked weather shields & side steps, the Style Pack adds both stylish and functional finishing touches to your Nissan X-TRAIL.

Protect

Featuring carpet floor mats, smoked bonnet protector, front & rear mud guards, and a first aid kit, keep your Nissan X-TRAIL in new condition for longer with the Protect Pack

Adventure

The X-TRAIL Adventure Pack is purpose built for epic weekend adventures and includes a Towbar, Roof Cross Bars and a Safety Pack.

Why Choose Genuine?



Safety

Your safety is our priority. That's why we put Nissan Genuine Accessories through thousands of hours of testing.



Reliability

Nissan Genuine Accessories are made for reliability and are covered by the Nissan New Vehicle Warranty.*



Perfect Fit

Crafted to fit your Nissan perfectly, Nissan Genuine Accessories ensure optimum performance.

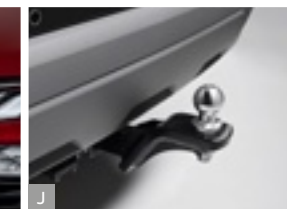
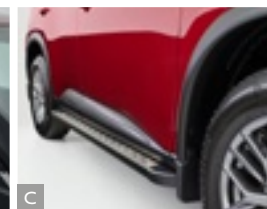
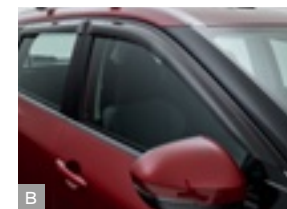


Future Proof

Nissan Genuine Accessories keep your vehicle complete and help maintain its resale value.

* Warranty: Nissan Genuine Accessories are built to Nissan's exacting quality standards and are backed by the confidence of Nissan's five (5) year unlimited kilometre New Vehicle Warranty when fitted to a vehicle in a Nissan authorised workshop at the time of vehicle purchase. If purchased after delivery of the vehicle and fitted by an authorised Nissan Dealer, Nissan Genuine Accessories will be covered by Nissan's one (1) year or 20,000km warranty or balance of the New Vehicle Warranty (whichever is greater). Nissan Genuine Accessories purchased over the counter are covered from sale date by Nissan's one (1) year or 20,000km warranty (whichever occurs first).

Note: Our goods come with guarantees that cannot be excluded under the Australian Consumer Law. The customer is entitled to a replacement or refund for a major failure and compensation for any other reasonably foreseeable loss or damage. The customer is also entitled to have the goods repaired or replaced if goods fail to be of acceptable quality and the failure does not amount to a major failure.



Style Accessory Pack

- A** Black air intake finisher
- B** Smoked weather shields
- C** Side steps

Protect Accessory Pack

- D** Front and rear mud guards
- E** Carpet floor mats
- F** Smoked bonnet protector
- G** First aid kit (not pictured)

Adventure Accessory Pack

- I** Roof cross bars
- J** Towbar
- K** Safety Pack

Accessory Pack contents may differ depending on model grade. Additional costs may apply. Recommended fit price may differ between Dealers. Please refer to your Nissan Dealer for model applicability & recommended fit price.

Specifications

						e-POWER		
	ST	ST-L	N-TREK	Ti	Ti-L	ST-L	Ti	Ti-L
Interior								
Steering wheel - urethane	•							
Steering wheel - leather-accented*		•	•	•	•	•	•	•
Tilt & telescopic steering wheel adjustment	•	•	•	•	•	•	•	•
Heated steering wheel					•			•
Ambient interior lighting - console tray				•			•	
Ambient interior lighting - console tray & door trim					•			•
Butterfly opening centre console	•	•	•	•	•	•	•	•
Front row sun visors with illuminated vanity mirrors	•	•	•	•	•	•	•	•
Divide-N-Hide® configurable cargo system		◦ (5-seat only)	◦ (5-seat only)	•	•	•	•	•
Cargo area removable tonneau cover	•	•	•	•	•	•	•	•
Cargo area light	•	•	•	•	•	•	•	•
4 cargo tie-down hooks	•	•	•	•	•	•	•	•
Seating								
5-seat configuration (2:3)	•	•	•	•	•	•	•	•
7-seat configuration (2:3:2)	◦ (4x4 only)	◦ (4x4 only)	◦ (4x4 only)					
6-way manually adjustable driver seat (including 2-way power lumbar)/4-way manually adjustable passenger seat	•							
10-way power adjustable driver seat (including 2-way power lumbar)/4-way manually adjustable passenger seat		•	•			•		
10-way power adjustable driver/passenger seat (including 2-way power lumbar)				•	•		•	•
Heated front seats		•	•	•	•	•	•	•
Heated second row outboard seats					•			•
60/40 split fold second row seat with manual recline and centre armrest	•							
40/20/40 split folding second row seat with manual recline, centre pass-through or centre armrest	◦ (7-seat only)	•	•	•	•	•	•	•
Sliding second row seats	◦ (7-seat only)	•	•	•	•	•	•	•
Child restraint anchorage (ISOFIX second row, outboard seats/tether second row, all seats)	•	•	•	•	•	•	•	•
Trim								
Seat trim - cloth	•							
Seat trim - synthetic leather		•	•			•		
Seat trim - genuine leather-accented*				•			•	
Seat trim - quilted Nappa leather-accented*					•			•
Front seatback pockets	•	•	•	•	•	•	•	•

Exterior								
Body colour door handles	•	•		•	•	•	•	•
Black door handles			•					
V-motion front grille with silver accent	•	•		•	•			
V-motion front grille with black accent			•			•	•	•
Silver roof rails	•	•		•	•	•	•	•
Black roof rails			•					
Black side moulding	•	•	•			•		
Chrome side moulding				•	•		•	•
Grey lower front and lower rear fascia	•	•				•		
N-TREK front and lower rear fascia			•					
Silver lower front and lower rear fascia				•	•		•	•

Specifications

						e-POWER		
	ST	ST-L	N-TREK	Ti	Ti-L	ST-L	Ti	Ti-L
Body colour roof (with body colour rear spoiler, shark fin antenna and door mirrors (mirrors excl. N-TREK))	•	•	•	•	•	•	•	•
Black painted roof*- (with black rear spoiler, shark fin antenna and door mirrors)			◦	◦	◦		◦	◦
Black door mirrors			•					
e-POWER badge (front doors & tailgate). e-4ORCE badge (tailgate)						•	•	•
Exterior – lighting								
LED headlights	•	•	•	•	•	•	•	•
LED tail lights	•	•	•	•	•	•	•	•
LED daytime running lights	•	•	•	•	•	•	•	•
LED fog lights			•	•	•		•	•
LED high mounted stop light	•	•	•	•	•	•	•	•
LED turn signal in door mirrors	•	•	•	•	•	•	•	•
Exterior – wheel & tyre								
17" alloy wheels with 235/65 R17 tyres	•							
18" alloy wheels with 235/60 R18 tyres		•				•		
18" N-TREK alloy wheels with 235/60 R18 tyres			•					
19" alloy wheels with 235/55 R19 tyres				•	•		•	◦
20" alloy wheels with 255/45 R20 tyres								•
Exterior – glass								
Privacy glass (second row & rear windows)		•	•	•	•	•	•	•
Tilt & slide power sunroof with panoramic glass roof				•	•		•	•

Exterior paint								
Solid White	•							
Scarlet Ember	•	•		•	•	•	•	•
Brilliant Silver#	■	■		■	■	■	■	■
Gun Metallic#	■	■	■	■	■	■	■	■
Caspian Blue#	■	■		■	■	■	■	■
Diamond Black#	■	■	■	■	■	■	■	■
Champagne Silver#		■	■	■	■	■	■	■
Ivory Pearl#		■	■	■	■	■	■	■
Ceramic Grey#		■	■	■	■	■	■	■
Ceramic Grey with black roof#-			■	■	■		■	■
Ivory Pearl with black roof#-			■	■	■		■	■
Caspian Blue with black roof#-				■	■		■	■
Champagne Silver with black roof#-			■				■	■

Standard
 Not available
 ◦ Option
 ■ Premium Paint

Q Torque figures are quoted independently for front and rear electric motors respectively and cannot be added together.
 Δ Figures tested in accordance with ADR81/02 (combined test). Figures stated for the purposes of comparison amongst vehicles only. Actual fuel consumption and CO2 emissions depends on factors such as traffic conditions, vehicle condition, how you drive and any accessories fitted.
 • Gross Vehicle Mass is the maximum loaded mass of a vehicle.
 † Kerb mass is the unladen mass of the vehicle with full tank of fuel without any accessories fitted.
 ‡ Towing capacity is subject to towbar/towball capacity and is based on the fitment of a Genuine Nissan towbar. Towing capacity figure described is a maximum figure. Actual towing capacity depends on the laden mass of the vehicle, driving conditions, fitment of any accessories or towing equipment limitations including the maximum towball download.
 # ProPILOT cannot prevent collisions. It is the driver's responsibility to be in control of the vehicle at all times. Always monitor traffic conditions and keep both hands on the steering wheel. System operates only when lane markings are detected. Does not function in all weather, traffic and road conditions. System has limited control capability and the driver may need to steer, brake or accelerate at any time to maintain safety. See Owner's Manual for safety information.
 ^ CarPlay is a registered trademark of Apple Inc. Android Auto is a trademark of Google LLC. Compatible device required. Wired connections require a USB connection.
 * Compatible device required.
 * Leather-accented features and upholstery may contain synthetic material. Minor trim variations may occur from time to time.
 # Premium paint available at extra cost. In some cases, the printed colours may vary from the actual paint colours.
 - Black painted roof available on N-TREK, Ti & Ti-L models at additional cost.

NOTE: All illustrations, information and specifications presented and referred to in this brochure were correct at the time this brochure was approved for printing. The colours in the photographs may vary from actual colours. Nissan Motor Co (Australia) Pty. Ltd. may at its discretion at any time and without prior notice discontinue or change the models, features, specifications, designs and prices of the products referred to in this brochure and any optional equipment without incurring any liability whatsoever to any purchaser or prospective purchaser of any such products. Always consult your Nissan Dealer for the latest information on models, specifications, features, prices, options and availability.

IMPORTANT: The specifications shown throughout are based on overseas models. Some specifications shown may differ from the final Australian models. Please check with your Nissan dealer for final specifications.

Nissan Motor Co (Australia) Pty. Ltd. ACN 004 663 156.

Updated September 2024.



NissanAustralia



@nissanaustralia



NissanAustralia

nissan.com.au