

SUBARU
BRZ
2019

every moment
is a chance to **do**



SUBARU



a classic sports car by Subaru

At Subaru, we're passionate about driving. It's in our DNA. That's why we made the Subaru BRZ. A classic sports car designed to sit low and deliver a driving experience that's exhilarating and a whole lot of fun. We made it for us. Now it's over to you.

With a legendary low centre of gravity Boxer engine at the core, and rear wheel drive dynamics, you'll love it the moment you get behind the wheel. Connect your smartphone with Apple CarPlay® and Android Auto™ connectivity¹. Put your favourite track on. As soon as you put your foot down, it'll be tough to wipe that grin off your face.

Find out more at subaru.com.au/brz

BRZ tS

¹. Compatible Apple® or Android™ device required.

Subaru spirit

The Subaru BRZ is powered by Subaru's famous horizontally-opposed Boxer engine. Its low centre of gravity is a major reason why BRZ sits low and grips the road so effectively. The high-revving 2.0-litre four cylinder Boxer engine features both direct and port injection technology for a throaty engine roar that's pure adrenaline-pumping fun. Loaded with cutting-edge technology and infotainment to up the fun factor.

Subaru BRZ Premium steps it up a level with heated driver and front passenger seats and the appeal of high-end Alcantara® seats with leather¹ accents and BRZ branding.

BRZ features

Performance

- + 2.0-litre horizontally-opposed Boxer 4-cylinder, petrol engine
- + 6-speed manual or 6-speed automatic transmission with manual mode
- + Maximum power output:
152kW@7000rpm (MT)
147kW@7000rpm (AT)
- + Maximum torque:
212Nm@6400-6800rpm (MT)
205Nm@6400-6600rpm (AT)

Interior

- + Air-conditioning – dual zone climate control
- + Sports bucket seats – driver and front passenger
- + Cloth seat trim – black with red stitching

- + Leather¹ steering wheel and gear shift
- + Paddle gear shifters (AT)
- + Sports pedals
- + Smart key and push-start ignition
- + Manual seat height lifter – driver
- + One touch lane change indicator
- + Side sill plates – stainless
- + Folding rear seat – one piece

Exterior

- + 17" alloy wheels with full size spare
- + Black power-folding door mirrors
- + Black shark fin antenna
- + Self-levelling LED headlights with auto off (dusk-sensing)
- + Daytime Running Lights – LED
- + Front fog lights – LED
- + Dual tail pipes

Entertainment/Technology

- + Multi-Information Display unit (MID)
- + Integrated infotainment system with 7" LCD touchscreen
- + Satellite navigation
- + Digital radio² (DAB+)
- + Apple CarPlay® and Android Auto™ connectivity³
- + Siri®⁴ compatibility
- + Bluetooth®⁵ wireless technology
- + USB connections (x2)
- + Cruise Control

BRZ Premium

Additional features

- + Alcantara® seats with leather¹ accents and BRZ logo
- + Heated seats – driver and front passenger

1. Some parts of the seating or trim are not full natural leather. 2. Digital radio station coverage dependent on vehicle location. 3. Compatible Apple® or Android™ device required. 4. Requires compatible Siri® enabled Apple® device to be paired with the infotainment system. 5. Bluetooth® is a registered trademark of Bluetooth SIG Inc. System functionality is subject to the Bluetooth® wireless technology specification of individual device.

Subaru spirit.
Explore the range at subaru.com.au/brz



BRZ



the full kit

Subaru BRZ tS takes some of the best of STI motorsports technology and raises the bar – both inside and out. Performance enhancements push the BRZ tS to the edge, with robust specially-tuned SACHS suspension supporting sharp handling and enviable driving stability. The sports flair continues with red Brembo brake calipers dueling for attention with dynamic 18" STI alloy wheels. Topping it off is a striking tS branded sports grille and a rear spoiler that means business. Subaru BRZ tS is spirited driving as good as it gets.

BRZ tS features

Performance

- + 2.0-litre horizontally-opposed Boxer 4-cylinder, petrol engine
- + 6-speed manual or 6-speed automatic transmission with manual mode
- + Maximum power output:
152kW@7000rpm (MT)
147kW@7000rpm (AT)
- + Maximum torque:
212Nm@6400-6800rpm (MT)
205Nm@6400-6600rpm (AT)
- + Brembo brake calipers
- + SACHS suspension

Interior

- + Air-conditioning – dual zone climate control
- + Folding rear seat – one piece
- + Instrument cluster (with STI logo)
- + Sports bucket seats – driver and front passenger

- + Alcantara® seats with red leather¹ accents and BRZ tS logo
- + Leather¹ steering wheel and gear shift (with STI logo/red accent)
- + Paddle gear shifters (AT)
- + Red seat belts
- + Side sill plates – stainless (with STI logo)
- + Sports pedals
- + Smart key and push-start ignition (with STI logo)
- + Manual seat height lifter – driver
- + One touch lane change indicator
- + Heated seats – driver and front passenger

Exterior

- + 18" STI alloy wheels
- + Black power-folding door mirrors
- + Black shark fin antenna
- + Self-levelling LED headlights with auto off (dusk-sensing)
- + Daytime running lights – LED
- + Dual tail pipes

- + Rear diffuser
- + Rear spoiler
- + Rear view reverse camera
- + Side garnish (with STI logo)
- + Sports grille
- + Exterior grade badges (BRZ tS/STI)

Entertainment/Technology

- + Multi-Information Display unit (MID)
- + Integrated infotainment system with 7" LCD touchscreen
- + Satellite navigation
- + Digital radio² (DAB+)
- + Apple CarPlay® and Android Auto™ connectivity³
- + Siri®⁴ compatibility
- + Bluetooth®⁵ wireless technology
- + USB connections (x2)
- + Cruise Control

1. Some parts of the seating or trim are not full natural leather. 2. Digital radio station coverage dependent on vehicle location. 3. Compatible Apple® or Android™ device required. 4. Requires compatible Siri® enabled Apple® device to be paired with the infotainment system. 5. Bluetooth® is a registered trademark of Bluetooth SIG Inc. System functionality is subject to the Bluetooth® wireless technology specification of individual device.

in the driver's seat

With a sleek, race-inspired cockpit, everything you want is right there in front of you. It's your time to be in total control, with direct engine feedback translated via the instrument cluster. The steering wheel features grippy cross-stitched leather¹ and conveniently mounted audio controls. The cabin bristles with new technology and infotainment thanks to a 7" LCD touchscreen, including the very latest in satellite navigation, Apple CarPlay[®] and Android Auto[™] connectivity².



Heated front seats
BRZ Premium and BRZ tS



USB connectivity x2
All BRZ variants



Push-start ignition
All BRZ variants



Paddle gear shifters
All BRZ variants (AT)

1. Some parts of the seating or trim are not full natural leather.
2. Compatible Apple[®] or Android[™] device required.



BRZ Premium

colours and trim

Interior

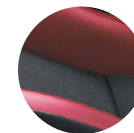
On the inside Subaru BRZ features black cloth with red stitching. Alcantara[®] trim with leather¹ accents is standard on the BRZ Premium and Alcantara[®] trim with red leather¹ accents is standard on the BRZ tS.



Cloth
Black



Alcantara[®] with leather¹ accents
Black



Alcantara[®] with red leather¹ accents
Black

Exterior

With a sleek and sophisticated exterior, a Subaru BRZ is as fun to drive as it looks. Available in a wide range of colours, the only question is which one is perfect for you?



Crystal White
Pearl



Lapis Blue
Pearl



Dark Grey
Metallic



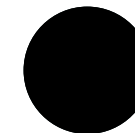
Ice Silver
Metallic



WR Blue
Pearl



Pure Red



Crystal Black
Silica

1. Some parts of the seating or trim are not full natural leather.

Note: Paint colours are representative only and subject to variation due to the printing process.

why BRZ?

Boxing clever

Our famous Subaru Boxer engine

While most engines stand vertically, ours lay flat. The famous Subaru Boxer engine delivers handling like no other engine can. Sitting horizontally in the engine bay, it moves like a boxer's fists with a punch and counterpunch action. Lightweight, low and flat, it makes for perfect balance and a much lower centre of gravity. It creates less noise and vibration too. All of this means better on-road handling for you. More stability. More performance. More fun. And a more confident drive.

Finest safety

5 star ANCAP safety across the BRZ range

With spirit, quality and imagination comes some serious safety innovation. We want every Subaru to be amongst the safest cars on the road. Engineered full of cutting-edge technologies and the most intelligent design features. It's not a Subaru unless it carries the maximum 5 star ANCAP¹ safety rating.

Eyes in the back of your head

Rear view reverse camera

Manoeuvring back into a tight side street? Family driveway littered with toys? Reverse with confidence, thanks to our rear view reverse camera technology. The rear view reverse camera is like having eyes in the back of your head. This greatly improves your visibility and reduces the risk of bumps and scrapes. Rear view reverse camera standard on all Subaru BRZ variants.

Control you can count on

Vehicle Dynamics Control

Enjoy having the confidence of precision engineering that helps to maintain control in sticky situations. Subaru's Vehicle Dynamics Control (VDC) utilises a range of sophisticated vehicle sensors and advanced safety technologies, which automatically act to help to maintain stability and control. This electronic Driver Assist system incorporates Subaru's Electronic Stability Control (ESC), Anti-lock Braking System (ABS), Electronic Brakeforce Distribution (EBD), Brake Assist and Traction Control System (TCS).

1. The Australasian New Car Assessment Program (ANCAP) gives consumers consistent information on the level of occupant protection provided by vehicles in serious front and side crashes.



BRZ & BRZ Premium

BRZ specifications¹

MODEL			BRZ	BRZ Premium	BRZ tS
Transmission					
6-speed manual transmission (MT)			•	•	•
6-speed automatic transmission (AT)			•	•	•
Engine					
Engine type			Horizontally-opposed Boxer 4-cylinder, petrol engine		
Valve mechanism			DOHC with Dual AVCS		
Bore x stroke	mm	86.0 x 86.0			
Capacity	cc	1998			
Compression ratio		12.5:1			
Fuel tank capacity	litres	50			
Fuel system		Direct injection and port injection			
Fuel requirement (min)	RON	98			
Performance²					
Maximum power output (DIN)	kW/rpm	152kW@7000rpm (MT) / 147kW@7000rpm (AT)			
Maximum torque (DIN)	Nm/rpm	212Nm@6400-6800rpm (MT) / 205Nm@6400-6600rpm (AT)			
Electronic Throttle Control system (ETC)			Drive-by-wire		
Fuel consumption (ADR 81/02)					
For comparison purposes only. Real world results may vary³:					
	combined	l/100km	8.4 (MT) / 7.1 (AT)		8.4 (MT) / 7.1 (AT)
	urban	l/100km	11.5 (MT) / 9.6 (AT)		11.5 (MT) / 9.6 (AT)
	extra urban	l/100km	6.7 (MT) / 5.7 (AT)		6.7 (MT) / 5.7 (AT)
CO₂ emissions (ADR 81/02)	combined	(g/km)	194 (MT) / 164 (AT)		194 (MT) / 164 (AT)
Transmission					
Gear ratio	1st	3.626 (MT) / 3.538 (AT)			
	2nd	2.188 (MT) / 2.060 (AT)			
	3rd	1.541 (MT) / 1.404 (AT)			
	4th	1.213 (MT) / 1.000 (AT)			
	5th	1.000 (MT) / 0.713 (AT)			
	6th	0.767 (MT) / 0.582 (AT)			
Gear ratio – reverse		3.437 (MT) / 3.168 (AT)			
Final reduction gear ratio		4.300 (MT) / 4.100 (AT)			

1. Subaru Australia reserves the right to change mechanical specification and equipment levels without notice. 2. All performance data measured using 95RON test fuel as required by Australian Design Rule 81/02. Vehicles tested in accordance with ADR 81/02. 3. Fuel consumption figures quoted are measured in accordance with Australian Design Rule 81/02 and are for comparison purposes only. Real world results may vary based on individual driving circumstances e.g. traffic conditions, driving style, vehicle conditions, fuel quality, climatic conditions etc. Quoted figures may not reflect real world fuel consumption.

BRZ specifications¹

MODEL		BRZ	BRZ Premium	BRZ tS
Steering				
Type		Electric power assisted rack and pinion		
Minimum turning circle	m	10.8		
Suspension				
Type	Front	MacPherson strut type		
	Rear	Double wishbone type		
Brakes				
Type	Front	Ventilated disc brake		
	Rear	Ventilated disc brake		
Brake booster type		10.5" single		
ABS		4-channel, 4-sensor ABS with Electronic Brakeforce Distribution		
Wheels and Tyres				
Tyre manufacturer		MICHELIN Primacy HP		MICHELIN Pilot Sport 4
Tyres		215/45 R17 87W		215/40 R18 85Y
Rim size		17x7J		18X7.5J
Wheels		17"		18"
Spare wheel		17"		
Measurement				
Overall length	mm	4240		
Overall width	mm	1775		
Overall height	mm	1320		
Wheel base	mm	2570		
Front track	mm	1520		
Rear track	mm	1540		
Minimum ground clearance ²	mm	130		
Cargo volume – rear seat up	litres	218		
Tare mass ³	kg	1242 (MT) / 1264 (AT)		1255 (MT) / 1277 (AT)
Seating capacity		4		

1. Subaru Australia reserves the right to change mechanical specification and equipment levels without notice. 2. Ground clearance at kerb weight. 3. Vehicle tare mass varies according to the types of optional equipment included.

BRZ features¹

MODEL	BRZ	BRZ Premium	BRZ tS
Safety Rating			
5 star ANCAP ² safety rating (maximum 5)	•	•	•
Collision Avoidance			
Vehicle Dynamics Control system (VDC) featuring:	•	•	•
Electronic Stability Control (ESC)	•	•	•
Anti-lock Braking System (ABS)	•	•	•
Electronic Brakeforce Distribution (EBD)	•	•	•
Brake Assist	•	•	•
Traction Control System (TCS)	•	•	•
4-wheel disc brakes	•	•	•
Brembo 4pot front caliper with Brembo Logo, ventilated disc brake			•
Brembo 2pot rear caliper with Brembo Logo, ventilated disc brake			•
Rear view reverse camera	•	•	•
Collision Protection			
SRS ³ airbags – dual front, dual front side, dual curtain and driver's knee	•	•	•
Front seat belts with pretensioners and load limiters	•	•	•
3 point A/ELR rear seat belts	•	•	•
Height adjustable front seat headrests	•	•	•
Seat belt warning lights – driver and front passenger	•	•	•
Child Safety			
Child seat anchor points (x2)	•	•	•
ISOFIX anchor points (x2)	•	•	•
Intelligent Driving Dynamics			
Cruise Control	•	•	•
Electronic Throttle Control system (ETC)	•	•	•
SACHS suspension			•
Chassis and Mechanism			
Front and rear stabiliser	•	•	•
Red shrink-painted intake manifold	MT only	MT only	MT only
Exterior			
Body coloured mirrors and door handles	Black mirrors	Black mirrors	Black mirrors
Body coloured rear garnish	•	•	•
Detachable module type windscreen wipers	•	•	•
Door mirrors – power-folding	Black painted	Black painted	Black painted

1. Subaru Australia reserves the right to change mechanical specification and equipment levels without notice. 2. The Australasian New Car Assessment Program (ANCAP) gives consumers consistent information on the level of occupant protection provided by vehicles in serious front and side crashes. 3. SRS: Supplemental Restraint System. Effective when used in conjunction with seat belts.

BRZ features¹

MODEL	BRZ	BRZ Premium	BRZ tS
Dual tail pipes	•	•	•
Engine cover	AT only	AT only	AT only
Exterior grade badges			BRZ tS / STI
Full size spare wheel	•	•	
Rear diffuser	•	•	•
UV glass – door, rear quarter and rear windscreen	•	•	•
Rear spoiler			•
Red painted Brembo brake calipers			•
Shark fin antenna	Black painted	Black painted	Black painted
Side garnish	•	•	With STI logo
Spacesaver spare wheel			•
Sports Grille			•
Tail pipe covers	•	•	•
17" alloy wheels	•	•	
18" alloy wheels			With STI logo
Lighting – Exterior			
Daytime Running Lights - LED	•	•	•
Front fog lights - LED	•	•	
Headlights – dusk-sensing	•	•	•
Headlights – self-levelling LED with auto off	•	•	•
Rear LED combination lights	•	•	•
Rear LED stoplight	•	•	•
Lighting – Interior			
Cabin and cargo area lights	•	•	•
Air-conditioning			
Dual zone climate control	•	•	•
Anti-dust filter	•	•	•
Front and side demisters	•	•	•
Rear windscreen demister – electric	•	•	•
Security			
DataDotDNA ^{®2} security system	•	•	•
Immobiliser security system	•	•	•
Instrumentation and Controls			
Adjustable steering wheel – height and telescopic	•	•	•
Instrument cluster	•	•	With STI logo

1. Subaru Australia reserves the right to change mechanical specification and equipment levels without notice. 2. DataDotDNA[®] is a theft deterrent not a theft prevention mechanism.

BRZ features¹

MODEL	BRZ	BRZ Premium	BRZ tS
Manual mode	AT only	AT only	AT only
One touch lane change indicator	•	•	•
Paddle gear shifters	AT only	AT only	AT only
Sports pedals	•	•	•
Cruise Control – on steering column	•	•	•
Steering wheel controls:	•	•	•
Audio	•	•	•
Bluetooth® ²	•	•	•
MID	•	•	•
Twin trip meter (switchable)	•	•	•
Multi-Function Displays			
Multi-Information Display unit (MID) featuring:	•	•	•
4.2" LCD screen	•	•	•
Journey and fuel information	•	•	•
Engine information	•	•	•
G monitor	•	•	•
Stopwatch	•	•	•
Warning display	•	•	•
Storage			
Cupholders – centre console	•	•	•
Door pockets with integrated bottle holder – front	•	•	•
Seat back pocket – front passenger side	•	•	•
Convenience			
12V/120W power jacks (x2)	•	•	•
Boot unlock on remote central locking keys	•	•	•
Interior fuel lid lock release	•	•	•
Intermittent variable speed front windscreen wipers	•	•	•
Power mirrors and windows – driver and front passenger window with auto function	•	•	•
Power steering	•	•	•
Remote central locking keys (x2)	•	•	•
Smart key and push-start ignition	•	•	With STI logo
Sunvisors with illuminated vanity mirrors – driver and front passenger	•	•	•

1. Subaru Australia reserves the right to change mechanical specification and equipment levels without notice. 2. Bluetooth® is a registered trademark of Bluetooth SIG Inc. System functionality is subject to the Bluetooth® wireless technology specification of individual device.

BRZ features¹

MODEL	BRZ	BRZ Premium	BRZ tS
Interior Trims			
Carpet trim – black	•	•	•
Side sill plates – stainless	•	•	With STI logo
Leather ² steering wheel and gear shift	With red stitching	With red stitching	With STI logo / red accent
Seat trim – cloth	With red stitching		
Seat trim – Alcantara® with leather ² accents		With BRZ logo	With BRZ tS logo
Seat trim colour – black	•	•	With red accents
Shift boot	•	•	•
Red seat belts			•
Sports bucket seats – driver and front passenger	•	•	•
Seating Extras			
Folding rear seat – one piece	•	•	•
Heated seats – driver and front passenger		•	•
Manual seat height lifter – driver	•	•	•
Entertainment			
Integrated infotainment system featuring:	•	•	•
7" LCD touchscreen	•	•	•
Satellite navigation	•	•	•
AM/FM radio	•	•	•
Digital radio ³ (DAB+)	•	•	•
Apple CarPlay® + Android Auto™ connectivity ⁴	•	•	•
Siri® ⁵ compatibility	•	•	•
6 speakers	•	•	•
Bluetooth® ⁶ wireless technology with:	•	•	•
Handsfree mobile communication	•	•	•
Audio streaming ⁷	•	•	•
Voice command recognition	•	•	•
USB connections (x2)	•	•	•

1. Subaru Australia reserves the right to change mechanical specification and equipment levels without notice. 2. Some parts of the seating or trim are not full natural leather. 3. Digital radio station coverage dependent on vehicle location. 4. Compatible Apple® or Android™ device required. 5. Requires compatible Siri® enabled Apple® device to be paired with the infotainment system. 6. Bluetooth® is a registered trademark of Bluetooth SIG Inc. System functionality is subject to the Bluetooth® wireless technology specification of individual device. 7. There may be restrictions on features available for certain models that are not fully compliant with AVCRP.

perfect for you

Why hold back when you can customise your Subaru BRZ? Explore our collection of Genuine Subaru Accessories to make your Subaru BRZ perfect for you. Style it up, spec it up and pack more in.

- + Styling Pump up the body image of Subaru BRZ with styling that includes an industrial-look fuel lid garnish, sharp boot lip spoiler¹ and drag reducing rear under diffuser.
- + Protection Coveting your Subaru BRZ is natural, protecting it is easy. Tailor-made to fit like a glove, our range of protection accessories will fend off spills, bumps and scrapes.
- + Security, Convenience and Safety Keep your new wheels secure with a set of wheel lock nuts and make tight parks easy with front corner and reverse parking sensors.
- + STI Performance Parts Tweak the performance of Subaru BRZ for that extra edge. Bring out the beast with performance parts for optimum handling and control. Or spiff it up with aerodynamic spoilers and sports-inspired alloy wheels¹.

Genuine Subaru Accessories are available from your Subaru Retailer, so be sure to ask about the range when buying your new Subaru BRZ.

1. Boot lip spoiler and alloy wheel set not applicable with BRZ tS.



To view our complete range of accessories and pricing online visit subaru.com.au/brz/accessories



BRZ



packs that will inspire you'

A passionate performer like the Subaru BRZ demands respect. So boost its street smarts with these carefully curated Genuine Subaru Accessory Packs designed to match BRZ's bold and dynamic engineering.

Styling Pack

The BRZ already has sports style in spades, but this pack takes it to the next level, improving aerodynamics for a better performance, enhanced grip and sleek styling.

- a** Front Under Spoiler
- b** Side Under Spoiler
- c** Rear Side Under Spoiler
- d** Boot Lip Spoiler (Crystal Black)²
- e** Rear Under Diffuser

S Pack²

Who said you can't have it all? The BRZ S Pack gives you everything that's great about the Styling Pack plus a whole lot more.

- f** Coil Spring Set – Front and Rear (2 required)
- g** Flexible Draw Stiffener (Front)
- h** Flexible Tower Bar
- i** Gear Shift Assembly (MT only)
- j** Duracon Shift Knob (MT only)
- k** Push-Start Engine Switch (Red)
- l** ENKEI Alloy Wheel Set (4)
– 17" (Black) inc. valves and centre caps



1. Adding a BRZ Accessory Pack will reduce ground clearance.
2. Not applicable with BRZ tS.

To view our complete range of accessories and pricing online visit subaru.com.au/brz/accessories

protect your investment

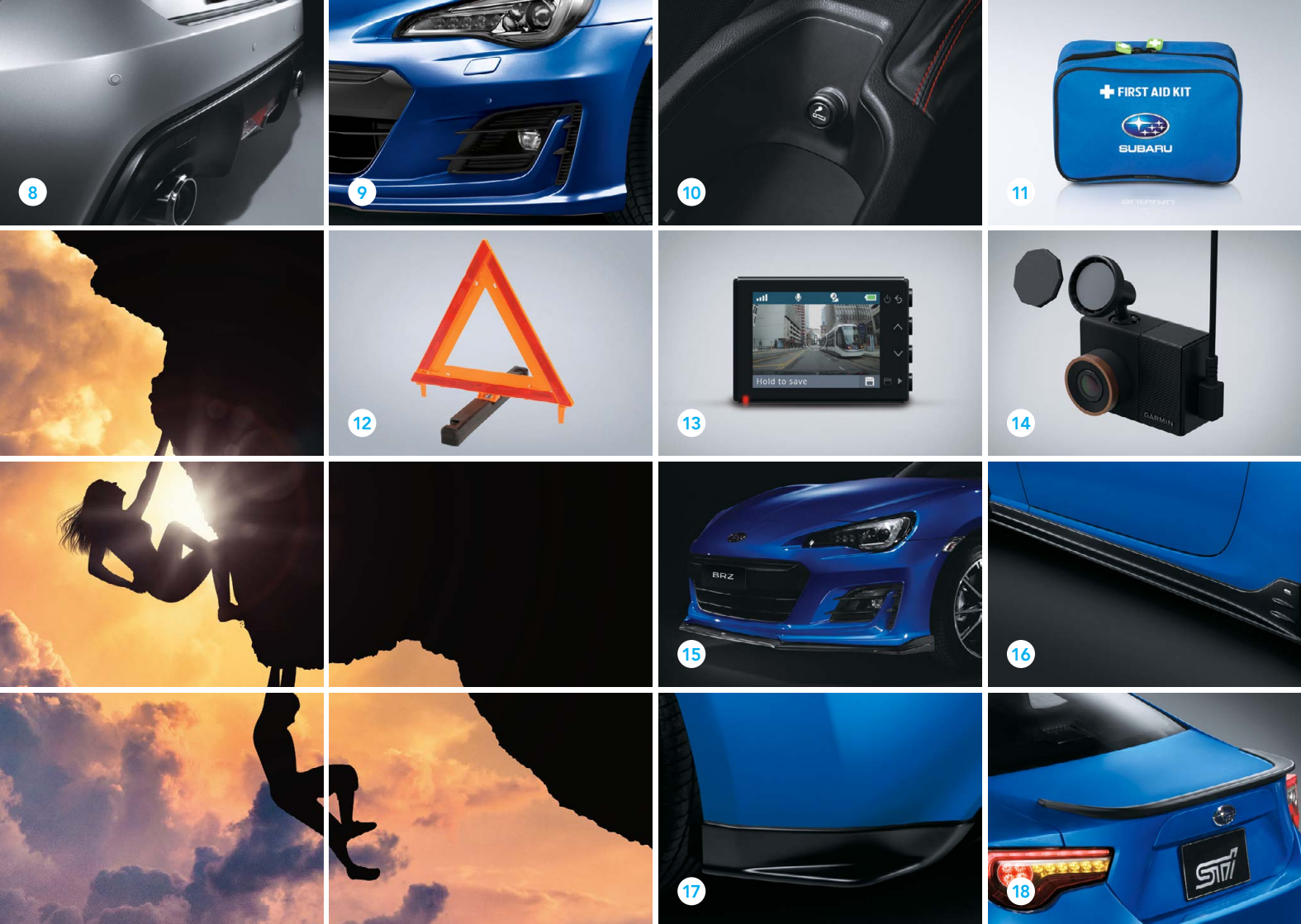
Get out and do more while protecting your Subaru BRZ from the rough and tumble of daily life. From carpet mats to a bumper protector, each of the below accessories are tailored for a perfect fit.

ACCESSORY		Part Number	BRZ	BRZ Premium	BRZ tS
Styling					
1	Fuel Lid Garnish	J1210CA800	•	•	•
2	Rear Under Diffuser	E5610CA000	•	•	•
Protection					
3	Carpet Mat Set	J501ACA000	•	•	•
4	Boot/Spare Wheel Carpet Mat	SAT9001	•	•	
5	Rear Step Panel	J1210CA900	•	•	•
6	Bootlip and Bumper Protector	SAT6003	•	•	•
Security					
7	Wheel Lock Nuts	B327EYA000	•	•	•

To view our complete range of accessories and pricing online visit subaru.com.au/brz/accessories

•	Applicable
	Not Applicable





relax, we've thought of everything

From the simplest wheel lock nuts, to intelligent front corner and reverse parking sensors, you can be sure we have you covered.

ACCESSORY	Part Number	BRZ	BRZ Premium	BRZ tS
Convenience and Safety				
8 Reverse Sensors	SAC9100##	•	•	•
9 Front Corner Parking Sensors (Reverse Sensors Required)	SAC9200##	•	•	•
10 Cigarette Lighter	H6710CA100	•	•	•
11 First Aid Kit	PR7670	•	•	•
12 Safety Triangle	SAT9007	•	•	•
13 Garmin Dash Cam 55	0100175011	•	•	•
14 Magnetic Mount (additional)	0101253000	•	•	•
STI Performance Parts				
15 Front Under Spoiler ¹	ST96020AS040	•	•	•
16 Side Under Spoiler ¹	ST96030AS021	•	•	•
17 Rear Side Under Spoiler ¹	ST96031AS000	•	•	•
18 Boot Lip Spoiler (Crystal Black)	ST96050AS030-S	•	•	

Denotes colour option of your choice.

1. Will reduce ground clearance.

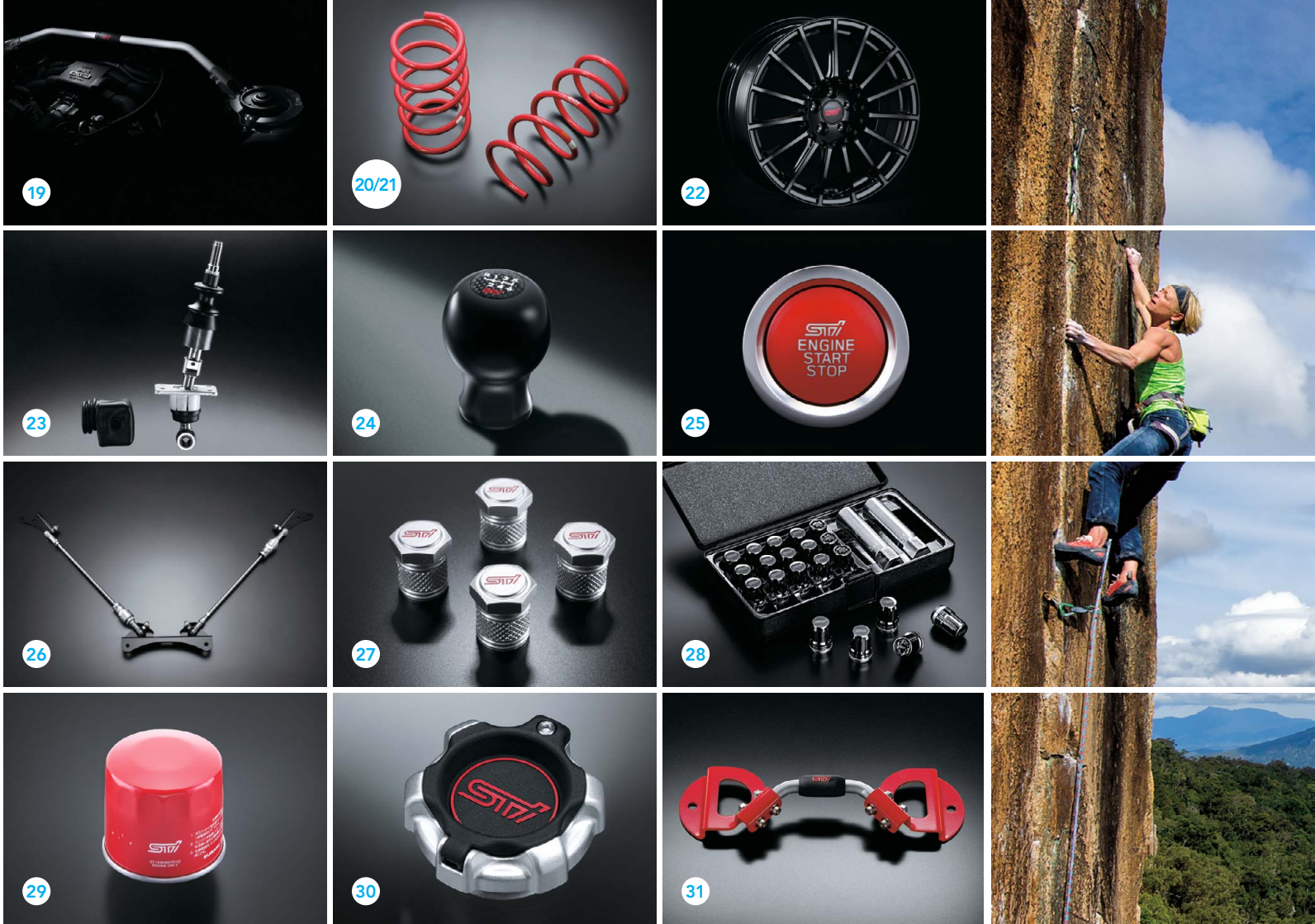
To view our complete range of accessories and pricing online visit
subaru.com.au/brz/accessories

kick it into overdrive

Up the ante on your Subaru BRZ by enhancing its street appeal, cockpit aesthetics and driver dynamics with STI branded performance parts.

ACCESSORY	Part Number	BRZ	BRZ Premium	BRZ tS
STI Performance Parts				
19 Flexible Tower Bar	ST20502AS000-S	•	•	•
20 Coil Spring Set – Front (2 required)	ST20330AS000-S	•	•	
21 Coil Spring Set – Rear (2 required)	ST20380AS000-S	•	•	
22 ENKEI Alloy Wheel Set (4) –17 inch (Black) including valves and centre caps	STIK5400	•	•	
23 Gear Shift Lever Assembly (MT only)	ST35010AS000-S	•	•	•
24 Duracon Shift Knob (6MT only)	ST35022ST260-S	•	•	•
25 Push-Start Engine Switch (Red)	ST83031ST021	•	•	
26 Flexible Draw Stiffener (Front)	ST20118AS000-S	•	•	
27 Valve Cap Set	ST28102ST030	•	•	•
28 Security Wheel Nut Set	ST28170ST060	•	•	•
29 Sports Oil Filter	ST15208ST010	•	•	•
30 Oil Cap	ST15257ZR010	•	•	•
31 Battery Clamp/Holder	ST82182ST000	•	•	•

To view our complete range of accessories and pricing online visit subaru.com.au/brz/accessories



welcome to the family

There are cars that simply get you from A to B, and then there are cars that empower you. Buying a Subaru is like embracing life with both hands and knowing that nothing is going to stop you. When you buy a new Subaru you are welcomed into an owner's program that gives you access to a number of benefits.

Subaru New Car Warranty – 3 Year/Unlimited Kilometres

Every new Subaru is covered by a three year unlimited kilometre manufacturer's national warranty. You can protect your investment further by purchasing an additional Subaru Assured Warranty¹ of up to three years. Visit subaru.com.au/warranty or ask your Subaru Retailer for more information.

Subaru Capped Price Servicing

With our Subaru BRZ 3 Year/60,000 Kilometre Capped Price Servicing Program², you'll now know the maximum amount you will



have to pay for your next scheduled service during the Program period. You'll also have peace of mind knowing that specialist Subaru technicians will be looking after your pride and joy using only Genuine Subaru Parts.

DataDotDNA®

Every Subaru is fitted with advanced engine immobilisers and the DataDotDNA^{®3} Theft Deterrent System. Microscopic dots are laser-etched with each vehicle's unique Vehicle Identification Number – making it a less attractive target for thieves.

Three Year Rebate on Theft Insurance Excess

DataDot Technology (Australia) Pty Ltd will pay your theft insurance excess⁴ (up to a maximum of \$800 including GST) should your new Subaru be stolen in the first three years of purchase and not recovered within 45 days despite the presence of DataDotDNA^{®3} and warning labels.

1-Month Health Check and Chat

The 1-Month Health Check and Chat is a free consultation within the first month after delivery of your new Subaru. It allows our Subaru-trained technicians to provide quick vehicle checks, and one of our Service Advisors will answer any of your questions to help ensure an ongoing, worry-free experience.

Subaru's Map Updates

If your new Subaru is fitted with a factory line fit navigation unit your unit will be covered by Subaru's Map Update Program⁵ – guaranteeing you'll have access to the latest maps with our Latest Map Guarantee and our 3 Year Map Update Program (subject to the vehicle having its scheduled services performed through a participating authorised Subaru Service Centre).

My Subaru – online owner's destination

The My Subaru owner's portal is an online destination for owners which provides access to exclusive benefits, tailored content, your vehicle's ownership history and much more.

live life without limits

Genuine Accessories

Genuine Subaru Accessories are designed to enhance your vehicle, are factory approved by Subaru and are protected by the Genuine Subaru Accessories Warranty. For our full range of Subaru BRZ accessories visit subaru.com.au/brz/accessories. For warranty information visit subaru.com.au/warranty and click on "Genuine Subaru Accessories Warranty".

Subaru Finance

Subaru Finance³ provides a range of competitive financial solutions to approved customers. Our finance specialists will help you find a finance package to meet your needs conveniently.

Subaru Insurance

It's important to enjoy the freedom of owning a Subaru, but it's also important to protect it. A range of Subaru Insurance⁴ options provides a variety of choices, including: Subaru Comprehensive Motor Vehicle Insurance, Subaru Value Protect Insurance and Subaru Loan Protection Insurance.

Subaru Certified Used Cars

Every Subaru Certified Used Car has passed a 120-point quality inspection and comes with a one year unlimited kilometre Subaru Assured Warranty⁵ – to complement the balance of a new vehicle warranty or the statutory warranty that remains – from participating Subaru Certified Used Car Retailers.

1. The Subaru Assured Warranty product is issued by the selling Subaru Retailer. Subaru Australia has no liability in respect of this warranty. 2. Every brand new 2019 Subaru BRZ comes with Subaru's 3 Year/60,000 Kilometre Capped Price Servicing Program. Available at participating Subaru Retailers only and does not apply to rental and some other classes of vehicles. For full Capped Price Servicing Terms and Conditions visit www.subaru.com.au/service/pricing/capped-price-servicing. 3. DataDotDNA[®] is a theft deterrent not a theft prevention mechanism. 4. Vehicles must be registered, comprehensively insured and less than 3 years old. DTA must receive a claim within 45 days of the theft. Terms and conditions apply. 5. Subaru's Map Update Program is available on MY19 Subaru BRZ models purchased from November 01, 2018 onwards with the factory line fit Gen3.1 navigation unit. Subaru's Map Update Program is not available on accessory fit or dealer sourced navigation units. For full terms and conditions of the Subaru Map Update Program visit www.subaru.com.au/owner-experience/benefits/subaru-map-update-program.

1. 12 month Club Membership and Roadside Assistance Offer is standard upon activation with the relevant Motoring Club in each state. To receive this benefit the customer must opt into the 12 month Club Membership and Roadside Assistance Offer at time of vehicle delivery. Eligible customers are those retail and novated lease customers who purchase a new Subaru and have less than 5 vehicles under the Club Membership offer. Customers must provide a valid phone number and residential address, as well as date of birth. Fleet, Government and Rental companies are excluded. Terms and conditions apply. For a full list of benefits, visit www.subaru.com.au/owner-experience/benefits/program/roadside. 2. Subaru Certified Collision Repairer network not available in all areas. Call 1800 737 179 or visit www.subaru.com.au/retailers to find your closest Subaru Certified Collision Repairer. 3. Finance provided by Macquarie Leasing Pty Limited ABN 38 002 674 982 Australian Credit Licence Number 394925 trading as Subaru Finance. All applications for credit are subject to Macquarie's normal credit approval criteria. Terms and conditions, fees and charges apply. 4. Subaru Insurance products are issued by Allianz Australia Insurance Limited AFS Licence No. 234 708 ABN 15 000 122 850 (Allianz). In arranging this insurance Subaru (Aust) Pty Limited ABN 95 000 312 792 (Subaru) and the authorised dealers act as agents of Allianz and not as your agent. Neither Subaru nor any of its related companies or appointed authorised retailers have any liability in respect of these policies. 5. The Subaru Assured Warranty product is issued by the selling Subaru Retailer. Subaru Australia has no liability in respect of this warranty.



BRZ

BRZ Awards

2017 - MOTOR's Most Fun Car, Subaru BRZ

2013 - Carsales Australia People's Choice Best Performance Car Under \$100,000 (with Toyota 86), Subaru BRZ

2012 - Australasian New Car Assessment Program 5 star (ANCAP) safety rating

- Wheels Car of the Year, Subaru BRZ (with Toyota 86)

- TopGear Australia Fun-est Car of the Year, Subaru BRZ

- Carsales Australia People's Choice Best Performance Car Under \$100,000 (with Toyota 86), Subaru BRZ

- News Limited Carsguide People's Choice Award, Subaru BRZ

- Best Buy for 2012 - Australian automotive website themotorreport.com.au, Subaru BRZ

Subaru Australia reserves the right to vary vehicle specifications and standard features in Australia from those detailed in this brochure. Vehicles shown in this brochure may be fitted with accessories available at additional cost. No part of the brochure can be reproduced without written permission from Subaru Australia. Printed in Australia.

subaru.com.au

© Copyright 2018 – Subaru (Aust) Pty Limited. All rights reserved.

Subaru (Aust) Pty Limited ABN 95 000 312 792 (Subaru Australia) PO Box 8311, Norwest NSW 2153 Toll Free: 1800 226 643



SUBARU