

do™

something
you'll love

IMPREZA
2018



SUBARU



do

do

do

do something you'll love

You only live once, so do amazing things. Live life better. Do things different. The 2018 Subaru Impreza turns small car convention on its head.

Reimagined and redesigned, Impreza is smart. Really smart. With 101 ways to make life better. Just touch, swipe, pinch and tap to start the magic.

Digital intelligence is dialled up via an intuitive 6.5" or 8" touchscreen. While the innovative new Subaru Global Platform underpins Impreza's every move, delivering an exciting drive and improved road dynamics.

Add the 2.0-litre horizontally-opposed direct injection Boxer engine and life just gets better. Turning small car agility into big time fun, the 2018 Subaru Impreza is a car for doing all the things you love. Take it for a test drive today.



Impreza 2.0i Hatch

go large on small

With 101 ways to make life better, Subaru Impreza 2.0i is big on the small details. Big on standard features, but small enough for sneaky city parking. Big on personality and small on missed opportunities.

With Subaru's legendary Symmetrical All-Wheel Drive handling and Boxer engine performance, Impreza 2.0i is larger than life. Innovation is delivered in spades with Auto Stop Start, USB connection, climate control air conditioning, an intuitive 6.5" touchscreen infotainment system and Bluetooth®1 wireless technology. Add 17" alloy wheels, power mirrors, power steering, a rear view reverse camera and you get the picture.

Impreza 2.0i features

Performance

- + 2.0-litre horizontally-opposed direct injection Boxer engine
- + Lineartronic™ CVT with manual mode
- + Maximum power output: 115kW@6000rpm
- + Maximum torque: 196Nm@4000rpm

Interior

- + Air-conditioning – climate control
- + Cloth seat trim – choice of black or ivory
- + Power mirrors, steering and windows
- + Manual seat height lifter – driver
- + One touch lane change indicator
- + Paddle gear shifters
- + 60/40 split folding rear seats
- + Smart key with push-start ignition

Exterior

- + 17" alloy wheels
- + Body coloured mirrors and door handles
- + Rear spoiler (hatch)

Entertainment / Technology

- + Integrated infotainment system with 6.5" LCD touchscreen
- + Bluetooth®1 wireless technology
- + Auxiliary jack and USB connection
- + USB charge port – centre console (x2)
- + Apple CarPlay™ and Android Auto™ connectivity²
- + Rear view reverse camera

1. Bluetooth® is a registered trademark of Bluetooth SIG Inc. System operation ability is subject to Bluetooth® wireless technology specification of individual device.

2. Compatible Apple or Android device required.

so you want more?

For even more of the fun stuff, step into a Subaru Impreza 2.0i-L or 2.0i Premium. The more polished interior is pure premium, with leather¹ steering wheel and gear shift. Pump up the volume with the 8" LCD touchscreen infotainment system and get all the info you need via a 6.3" Multi-Function Display screen, a Tyre Pressure Monitoring System, and on the 2.0i Premium, satellite navigation.

Enjoy the added safety and control of the EyeSight[®] Driver Assist system. EyeSight[®] features advanced preventative safety technologies, including Pre-Collision Brake Assist and Lane Keep Assist to help avoid accidents. Pure genius.

Impreza 2.0i-L features

Performance

- + 2.0-litre horizontally-opposed direct injection Boxer engine
- + Lineartronic[™] CVT with manual mode
- + Maximum power output: 115kW@6000rpm
- + Maximum torque: 196Nm@4000rpm

Interior

- + Air-conditioning – dual zone climate control
- + Premium cloth seat trim – choice of black or ivory
- + Power mirrors, steering and windows
- + Manual seat height lifter – driver
- + One touch lane change indicator
- + Paddle gear shifters
- + 60/40 split folding rear seats
- + Leather¹ steering wheel and gear shift
- + Smart key with push-start ignition

Exterior

- + 17" alloy wheels
- + Body coloured mirrors and door handles
- + Rear spoiler (hatch)
- + Front fog lights
- + Daytime running lights

Entertainment / Technology

- + Multi-Function Display unit (MFD)
- + Integrated infotainment system with 8" LCD touchscreen
- + Bluetooth^{®2} wireless technology
- + Auxiliary jack and USB connections (x2)
- + USB charge port – centre console (x2)
- + Rear view reverse camera
- + Apple CarPlay[™] and Android Auto[™] connectivity³

+ EyeSight[®] Driver Assist System featuring:

- + Adaptive Cruise Control
- + Brake Light Recognition
- + Lane Departure Warning
- + Lane Keep Assist
- + Lane Sway Warning
- + Lead Vehicle Start Alert
- + Pre-Collision Brake Assist
- + Pre-Collision Braking System
- + Pre-Collision Throttle Management

Impreza 2.0i Premium extras

Additional Features

- + Electric sunroof
- + Satellite navigation

So you want more?
Explore the range at subaru.com.au/impreza

1. Some parts of the seating or trim are not full natural leather. 2. Bluetooth[®] is a registered trademark of Bluetooth SIG Inc. System operation ability is subject to Bluetooth[®] wireless technology specification of individual device. 3. Compatible Apple or Android device required.



Impreza 2.0i Premium Sedan



Impreza 2.0i-S Hatch

live your best life

Want next level luxury? Drool over the Subaru Impreza 2.0i-S line up. Life just gets better with sleek leather¹ seats, an 8-way power driver's seat, sports pedals and 18" alloy wheels.

It's got all the gear to take life head on with rain-sensing front windscreen wipers – plus self-levelling, dusk-sensing Steering Responsive Headlights. And say goodbye to life's curve balls and blind spots with Vision Assist technologies including our new Reverse Automatic Braking.

Impreza 2.0i-S features

Performance

- + 2.0-litre horizontally-opposed direct injection Boxer engine
- + Lineartronic™ CVT with manual mode
- + Maximum power output: 115kW@6000rpm
- + Maximum torque: 196Nm@4000rpm

Interior

- + Air-conditioning – dual zone climate control
- + Leather¹ seat trim – choice of black or ivory
- + Power mirrors, steering and windows
- + One touch lane change indicator
- + Paddle gear shifters
- + 60/40 split folding rear seats
- + 8-way power seat – driver
- + Heated front seats
- + Sports pedals
- + Smart key with push-start ignition

Exterior

- + 18" alloy wheels
- + Body coloured mirrors and chrome style door handles
- + Rear spoiler (hatch)
- + Front fog lights
- + Self-levelling LED headlights with auto off (dusk-sensing)
- + Daytime running lights (LED)
- + Electric sunroof
- + Rain-sensing front windscreen wipers
- + Side sill skirts
- + Steering Responsive Headlights (SRH)

Entertainment / Technology

- + Multi-Function Display unit (MFD)
- + Multi-Information Display unit (MID)
- + Integrated infotainment system with 8" LCD touchscreen
- + Satellite navigation
- + Bluetooth^{®2} wireless technology

- + Rear view reverse camera
- + Auxiliary jack and USB connections (x2)
- + Apple CarPlay™ and Android Auto™ connectivity³
- + EyeSight[®] Driver Assist System featuring:
 - + Adaptive Cruise Control
 - + Brake Light Recognition
 - + Lane Departure Warning
 - + Lane Keep Assist
 - + Lane Sway Warning
 - + Lead Vehicle Start Alert
 - + Pre-Collision Brake Assist
 - + Pre-Collision Braking System
 - + Pre-Collision Throttle Management
- + Vision Assist featuring:
 - + Blind Spot Monitor (BSM)
 - + Lane Change Assist (LCA)
 - + Rear Cross Traffic Alert (RCTA)
 - + Reverse Automatic Braking (RAB)

1. Some parts of the seating or trim are not full natural leather. 2. Bluetooth[®] is a registered trademark of Bluetooth SIG Inc. System operation ability is subject to Bluetooth[®] wireless technology specification of individual device. 3. Compatible Apple or Android device required.

why Impreza?

Symmetrical force of power

Our All-Wheel Drive philosophy

Greater balance and control. That's the confidence you get from our unique Symmetrical All-Wheel Drive System, which delivers the drive distribution to all four wheels, all the time. Every Subaru Impreza has an innate sense of balance from the ground up, thanks to a near perfect symmetrical layout.

Boxing clever

Our famous Subaru Boxer engine

While most engines stand vertically, ours lay flat. The famous Subaru Boxer engine delivers handling like no other engine can. Sitting horizontally in the engine bay, it moves like a boxer's fists with a punch and counterpunch action. Lightweight, low and flat, it makes for perfect balance and a much lower centre of gravity. It creates less noise and vibration too. All of this means better on-road handling for you. More stability. More performance. More fun. And a more confident drive.

DataDotDNA®

Every Subaru is fitted with advanced engine immobilisers and the DataDotDNA®¹ Theft Deterrent System. Microscopic dots are laser-etched with each vehicle's unique Vehicle Identification Number – making it a less attractive target for thieves.

Three Year Rebate on Theft Insurance Excess

DataDot Technology (Australia) Pty Ltd will pay your theft insurance excess² (up to a maximum of \$800 including GST) should your new Subaru be stolen and not recovered within 45 days despite the presence of DataDotDNA®¹ and warning labels.

Finest safety

5 star ANCAP safety across the range

With spirit, quality and imagination comes some serious safety innovation. We want every Subaru to be amongst the safest cars on the road. Engineered full of cutting-edge technologies and the most intelligent design features. It's not a Subaru unless it carries the maximum 5 star ANCAP³ safety rating.

The backbone of the future

Subaru Global Platform

Built on the new Subaru Global Platform, Impreza is a new-generation small car which sets the benchmark.

Revolutionary Subaru engineering underpins the superior modular platform for enhanced performance, safety and drivability. Innovative to the core, the game changing frame delivers reduced vibration, less roll when cornering, a smoother ride and improved overall road dynamics.

The result? A drive that's damn near perfect and super smooth – with greater straight line stability, improved rigidity, more responsive steering control and a quieter cabin.

Eyes in the back of your head

Rear view reverse camera

Manoeuvring back into a tight side street? Family driveway littered with toys? Reverse with confidence, thanks to our rear view reverse camera technology. The rear view reverse camera is like having eyes in the back of your head. This greatly improves your visibility and helps reduce the risk of bumps and scrapes. Rear view reverse camera comes standard across the Impreza range.

Efficiency without compromise

Auto Stop Start

We're constantly thinking of ways to help the environment and become more fuel-efficient. That's why we developed Auto Stop Start technology. It saves fuel by immediately cutting the engine when you don't need it, like when you're idling or stopped in heavy traffic. The moment you're ready to move again, the engine restarts in a fraction of a second. Our Auto Stop Start technology is standard across the Impreza range.

Yet another world first

Lineartronic™ CVT

Pushing innovation beyond the bounds, we introduced an automatic transmission called Lineartronic™ CVT. And it's the reason our automatic models drive so smooth. It's the world's first longitudinally mounted system for AWD vehicles. Unlike a conventional automatic transmission – which uses fixed gear ratios – our Lineartronic™ CVT provides infinite variability between the highest and lowest available ratios. So you now experience a smoothness that also optimises the efficiency of the vehicle. For even more excitement, switch to manual mode for greater control to suit your driving style. Lineartronic™ CVT is standard across the Impreza range.

We're looking out for you

EyeSight® Driver Assist

We were the first car company to exclusively use stereo camera technology to detect objects in our vehicles path. A sign of our future-thinking and our commitment to quality,

technology and safety, EyeSight® Driver Assist is like your second pair of eyes, spotting potentially dangerous situations. If EyeSight® detects anything that might be of danger, it warns you audibly, urging you to take action and brake. And it automatically applies the brakes if you don't. EyeSight® Driver Assist is standard on Impreza 2.0i-L, 2.0i Premium and 2.0i-S variants.

Clever thinking

Vision Assist

Imagine if your wing mirrors could alert you when there's something in your blind spot. Or if your car could detect the possibility of a collision whilst in reverse, and automatically apply the brakes. We made all this happen – and more – with Subaru's Vision Assist.

Our suite of proactive safety technologies including Blind Spot Monitor, Lane Change Assist, Rear Cross Traffic Alert and Reverse Automatic Braking are always at work to help you feel safer on the road. Subaru's Vision Assist technologies are standard on the Subaru Impreza 2.0i-S.

1. DataDotDNA® is a theft deterrent not a theft prevention mechanism. 2. Vehicles must be registered, comprehensively insured and less than 3 years old. DTA must receive a claim within 45 days of the theft. Terms and conditions apply. 3. The Australasian New Car Assessment Program (ANCAP) gives consumers consistent information on the level of occupant protection provided by vehicles in serious front and side crashes.

switched on

It's time to play – so get connected. Infotainment lets you enjoy more of the good stuff via the the 6.5" or 8" touchscreen, with Apple CarPlay™ and Android Auto™ connectivity¹ at your fingertips. The smarts continue with satellite navigation on 2.0i Premium and 2.0i-S variants.

Flick Impreza into cruising mode with the convenient steering wheel controls for a range of functions including audio, Bluetooth^{®2} and the MFD unit. Or get real and go handsfree with voice command Bluetooth^{®2} technology for audio streaming and mobile calls. Plug into a better life with two handy USB charge ports and you're all sorted.



Infotainment system
Impreza 2.0i



USB connectivity x2
Impreza 2.0i-L, 2.0i Premium and 2.0i-S



Multi-Function Display unit
2.0i-L, 2.0i Premium and 2.0i-S



Steering wheel controls
All Impreza variants

1. Compatible Apple or Android device required. 2. Bluetooth[®] is a registered trademark of Bluetooth SIG Inc. System operation ability is subject to Bluetooth[®] wireless technology specification of individual device.



Impreza 2.0i-S

be inspired

Interior

On the inside, choose from black or ivory cloth in the Subaru Impreza 2.0i. Impreza 2.0i-L and 2.0i Premium variants feature premium cloth interior in a choice of black or ivory. And for the range-topping 2.0i-S, sumptuous leather¹ is available in black or ivory.



Leather Black



Leather Ivory



Premium Cloth Black



Premium Cloth Ivory



Cloth Black



Cloth Ivory

Exterior

The colour you choose for your Subaru makes a bold statement about who you are. So we've made sure you've got lots of ways to express yourself – with a wide range of colours to make your Subaru more... you.



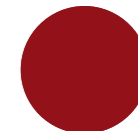
Crystal White Pearl



Ice Silver Metallic



Dark Blue Pearl



Venetian Red Pearl



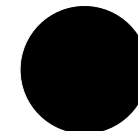
Quartz Blue Pearl



Pure Red



Dark Grey Metallic



Crystal Black Silica

1. Some parts of the seating or trim are not full natural leather.

Note: Paint colours are representative only and subject to variation due to the printing process.

Impreza specifications¹

MODEL	2.0i	2.0i-L	2.0i Premium	2.0i-S
	Sedan/Hatch	Sedan/Hatch	Sedan/Hatch	Sedan/Hatch
Transmission				
Lineartronic™ CVT with manual mode	•	•	•	•
Engine	Horizontally-opposed Boxer 4-cylinder, petrol engine			
Engine type	DOHC with Dual AVCS			
Valve mechanism	DOHC with Dual AVCS			
Bore x stroke	mm	84.0 x 90.0		
Capacity	cc	1995		
Compression ratio		12.5:1		
Fuel tank capacity	litres	50		
Fuel system		Direct injection		
Fuel requirement (min)	RON	90		
Performance²				
Maximum power output (DIN)	kW/rpm	115kW@6000rpm		
Maximum torque (DIN)	Nm/rpm	196Nm@4000rpm		
Electronic Throttle Control system (ETC)		Drive-by-wire		
Fuel consumption (ADR 81/02) For comparison purposes only. Real world results may vary ³ :				
	combined	l/100km	6.6	7.2
	urban	l/100km	8.4	9.1
	extra urban	l/100km	5.6	6.1
CO ₂ emissions (ADR 81/02)	combined	(g/km)	152	163
Symmetrical All-Wheel Drive				
Type	Auto	Active Torque Split		
Transmission				
Gear ratio	1st	3.600 (M Mode) / Continuously variable (CVT)		
	2nd	2.155 (M Mode) / Continuously variable (CVT)		
	3rd	1.516 (M Mode) / Continuously variable (CVT)		
	4th	1.092 (M Mode) / Continuously variable (CVT)		
	5th	0.843 (M Mode) / Continuously variable (CVT)		
	6th	0.667 (M Mode) / Continuously variable (CVT)		
	7th	0.557 (M Mode) / Continuously variable (CVT)		
Gear ratio – reverse		3.687		
Final reduction gear ratio		3.700		

1. Subaru Australia reserves the right to change mechanical specification and equipment levels without notice. 2. All performance data measured using 95RON as required by Australian Design Rule 81/02. Vehicles tested in accordance with ADR 81/02. 3. Fuel consumption figures quoted are measured in accordance with Australian Design Rule 81/02 and are for comparison purposes only. Real world results may vary based on individual driving circumstances e.g. traffic conditions, driving style, vehicle conditions, fuel quality, climatic conditions etc.

Impreza specifications¹

MODEL	2.0i	2.0i-L	2.0i Premium	2.0i-S
Steering	Electric power assistance rack and pinion			
Steering	Electric power assistance rack and pinion			
Minimum turning circle	m	10.6		
Suspension				
Type	Front	MacPherson strut type, independent suspension		
	Rear	Double wishbone type, independent suspension		
Brakes				
Type	Front	Ventilated disc brake		
	Rear	Ventilated disc brake		
Brake booster type		Tandem		
ABS		4-channel, 4-sensor ABS with Electronic Brakeforce Distribution		
Wheels and Tyres				
Tyre manufacturer		Bridgestone	Yokohama	
Tyres (width, profile, size, load index and speed rating)		205/50R17 89V	225/40R18 92W	
Rim size		17x7J	18x7.5J	
Wheels		17"	18"	
Spare wheel		Spacesaver spare wheel		
Measurement				
Overall length	mm	Sedan - 4625 / Hatch - 4460		
Overall width	mm	1775		
Overall height	mm	Sedan - 1455 / Hatch - 1480		
Wheel base	mm	2670		
Front track	mm	1540		
Rear track	mm	1545		
Minimum ground clearance ²	mm	130		
Cargo volume – rear seat up / down	litres	Sedan - 460 / NA Hatch - 345 / 795		
Kerb weight ³	kg	1386 (Sedan) 1399 (Hatch)	1409 (Sedan) 1421 (Hatch)	1409 (Sedan) 1421 (Hatch)
			1421 (Hatch)	1433 (Sedan) 1438 (Hatch)
Tare mass ³	kg	1346 (Sedan) 1359 (Hatch)	1369 (Sedan) 1381 (Hatch)	1369 (Sedan) 1381 (Hatch)
				1393 (Sedan) 1398 (Hatch)
Seating capacity		5		
Towing				
With trailer brakes	kg	1200 (Hatch only)		
Without trailer brakes	kg	650 (Hatch only)		
Maximum tow ball down load	kg	120 (Hatch only)		

1. Subaru Australia reserves the right to change mechanical specification and equipment levels without notice. 2. Ground clearance at kerb weight. 3. Vehicle kerb weight and tare mass varies according to the types of optional equipment included.

Impreza features¹

MODEL	2.0i	2.0i-L	2.0i Premium	2.0i-S
Safety Rating				
5 star ANCAP ² safety rating (maximum 5)	•	•	•	•
Collision Avoidance				
Symmetrical All-Wheel Drive (SAWD)	•	•	•	•
Vehicle Dynamics Control system (VDC) featuring:	•	•	•	•
Electronic Stability Control (ESC)	•	•	•	•
Anti-lock Braking System (ABS)	•	•	•	•
Electronic Brakeforce Distribution (EBD)	•	•	•	•
Brake Assist	•	•	•	•
Traction Control System (TCS)	•	•	•	•
Active Torque Vectoring System				•
4-wheel disc brakes	•	•	•	•
Hill Hold Assist (with switch)	•	•	•	•
Electronic parking brake	•	•	•	•
Rear view reverse camera	•	•	•	•
Vision Assist featuring:				•
Blind Spot Monitor (BSM)				•
Lane Change Assist (LCA)				•
Rear Cross Traffic Alert (RCTA)				•
Reverse Automatic Braking (RAB)				•
Collision Protection				
SRS ³ airbags – dual front, dual front side, curtain and driver knee	•	•	•	•
Front seat belts with pretensioners and load limiters	•	•	•	•
3 point A/ELR rear seat belts	•	•	•	•
Height adjustable seat belt anchors – driver and front passenger	•	•	•	•
Seat belt warning lights – all seats	•	•	•	•
Rear seat headrests for 3 seating positions	•	•	•	•
Height and angle adjustable front seat headrests	•	•	•	•
Height adjustable rear seat headrests	•	•	•	•
Ring-shaped passenger safety cell	•	•	•	•
Child Safety				
Child seat anchor points (x3)	•	•	•	•
ISOFIX anchor points (x2)	•	•	•	•
Rear door child locks	•	•	•	•

1. Subaru Australia reserves the right to change mechanical specification and equipment levels without notice. 2. The Australasian New Car Assessment Program (ANCAP) gives consumers consistent information on the level of occupant protection provided by vehicles in serious front and side crashes. 3. SRS: Supplemental Restraint System. Effective when used in conjunction with seat belts.

Impreza features¹

MODEL	2.0i	2.0i-L	2.0i Premium	2.0i-S
Intelligent Driving Dynamics				
Auto Stop Start	•	•	•	•
EyeSight [®] Driver Assist system featuring:		•	•	•
Adaptive Cruise Control		•	•	•
Brake Light Recognition		•	•	•
Lane Departure Warning		•	•	•
Lane Keep Assist		•	•	•
Lane Sway Warning		•	•	•
Lead Vehicle Start Alert		•	•	•
Pre-Collision Brake Assist		•	•	•
Pre-Collision Braking System		•	•	•
Pre-Collision Throttle Management		•	•	•
Cruise control	•			
Electronic Throttle Control system (ETC)	•	•	•	•
Tyre Pressure Monitoring System	•	•	•	•
Chassis and Mechanism				
Front and rear stabiliser	•	•	•	•
Exterior				
Body coloured mirrors				•
Body coloured mirrors and door handles	•	•	•	•
Body coloured rear garnish (Hatch)	•	•	•	•
Chrome type door handles				•
Chrome type window sills				•
Detachable module type windscreen wipers	•	•	•	•
Door mirrors with indicators – heated				•
Door mirrors with indicators – power folding		•	•	•
Electric sunroof			•	•
Privacy glass – rear door, rear quarter and rear windscreen (Hatch)	•	•	•	•
Privacy glass – rear door and rear quarter (Sedan)	•	•	•	•
Rear spoiler (Hatch)	•	•	•	•
Rear window wiper (Hatch)	•	•	•	•
Roof carrier brackets (Hatch)	•	•	•	•
Shark fin antenna	•	•	•	•
Side sill skirts				•

1. Subaru Australia reserves the right to change mechanical specification and equipment levels without notice.

Impreza features¹

MODEL	2.0i	2.0i-L	2.0i Premium	2.0i-S
Spacesaver spare wheel	•	•	•	•
Tail pipe cover				Sedan
17" alloy wheels	•	•	•	
18" alloy wheels				•
Lighting – Exterior				
Daytime running lights		Halogen	Halogen	LED
Front fog lights		•	•	•
Headlights – halogen with auto off	•	•	•	
Headlights – dusk-sensing				•
Headlights – self-levelling LED headlights with auto off				•
Rear bumper reflector(s) (Hatch)	•	•	•	•
Rear LED combination lights	•	•	•	•
Rear LED stoplight	•	•	•	•
Steering Responsive Headlights (SRH)				•
Lighting – Interior				
Cabin and cargo area lights	•	•	•	•
Map lights (x2)	•	•	•	•
Air-conditioning				
Air-conditioning – climate control	•			
Air-conditioning – dual zone climate control		•	•	•
Anti-dust filter	•	•	•	•
Front and side demisters	•	•	•	•
Floor heater ducts for rear passengers	•	•	•	•
Rear windscreen demister – electric	•	•	•	•
Security				
DataDotDNA ^{®2} security system	•	•	•	•
Immobiliser security system	•	•	•	•
Instrumentation and Controls				
Adjustable steering wheel – height and telescopic	•	•	•	•
Electroluminescent gauges with colour MID		•	•	•
Hazard warning indicators	•	•	•	•
Instrument cluster	Standard	Premium	Premium	Premium

1. Subaru Australia reserves the right to change mechanical specification and equipment levels without notice. 2. DataDotDNA[®] is a theft deterrent not a theft prevention mechanism.

Impreza features¹

MODEL	2.0i	2.0i-L	2.0i Premium	2.0i-S
Manual mode	•	•	•	•
One touch lane change indicator	•	•	•	•
Paddle gear shifters	•	•	•	•
Sport pedals				•
Steering wheel controls:	•	•	•	•
Audio	•	•	•	•
Cruise	•			
Bluetooth ^{®2}	•	•	•	•
EyeSight [®]		•	•	•
MFD	•	•	•	•
MID		•	•	•
Multi-Information Display unit (MID) featuring:		•	•	•
4.2" LCD screen		•	•	•
Journey and fuel economy information		•	•	•
Eco-gauge information		•	•	•
EyeSight [®] display		•	•	•
Auto Stop Start information		•	•	•
Tyre Pressure Monitoring System ³		•	•	•
Warning display		•	•	•
Digital speedometer		•	•	•
Multi-Function Display unit (MFD) featuring:	•	•	•	•
6.3" LCD screen		•	•	•
Outside temperature and clock display	•	•	•	•
Journey and fuel economy information	•	•	•	•
Air-conditioning display		•	•	•
EyeSight [®] display		•	•	•
Preventative Safety display		•	•	•
Electrical component operating condition display		•	•	•
Navigation display			•	•
Auto Stop Start information	•			
Audio display		•	•	•
Twin trip meter (switchable)	•	•	•	•

1. Subaru Australia reserves the right to change mechanical specification and equipment levels without notice. 2. Bluetooth[®] is a registered trademark of Bluetooth SIG Inc. System operation ability is subject to the Bluetooth[®] wireless technology specification of individual device. 3. Impreza 2.0i TPMS features warning light only.

Impreza features¹

MODEL	2.0i	2.0i-L	2.0i Premium	2.0i-S
Storage				
Cargo luggage hooks (Hatch)	•	•	•	•
Centre console box	•	With stitching	With stitching	With stitching
Cupholders - rear	•	•	•	•
Cupholders - centre console	•	•	•	•
Door pockets with integrated bottle holder – front and rear	•	•	•	•
Front centre tray	•	•	•	•
Pull-out cargo area tie down points (Hatch)	•	•	•	•
Retractable cargo blind (Hatch)	•	•	•	•
Seat back pocket – front passenger side	•	•	•	•
Convenience				
12V/120W power jacks (x2)	•	•	•	•
USB charge port - centre console (x2)	•	•	•	•
Boot unlock on remote central locking keys	•	•	•	•
Driver's footrest	•	•	•	•
Sunvisors with illuminated vanity mirrors – driver and front passenger		•	•	•
Sunvisors with vanity mirrors – driver and front passenger	•			
Interior fuel lid lock release	•	•	•	•
Intermittent variable speed front windscreen wipers	•	•	•	•
Rain-sensing front windscreen wipers				•
Power steering and mirrors	•	•	•	•
Power windows - front with soft open/close and auto	•	•	•	•
Rear seat centre armrest	•	•	•	•
Rear view mirror	•	•	•	•
Remote central locking keys (x2)	•	•	•	•
Smart key and push-start ignition	•	•	•	•
Interior Trims				
Carpet trim – black	•	•	•	•
Leather ² steering wheel and gear shift		•	•	•
Seat trim – black or ivory cloth	•	Premium	Premium	
Seat trim – black or ivory leather ²				•
Shift boot		•	•	•

1. Subaru Australia reserves the right to change mechanical specification and equipment levels without notice. 2. Some parts of the seating or trim are not full natural leather.

Impreza features¹

MODEL	2.0i	2.0i-L	2.0i Premium	2.0i-S
Seating Extras				
60/40 split folding rear seats	•	•	•	•
8-way power seat – driver				•
Heated seats – driver and front passenger				•
Manual seat height lifter – driver	•	•	•	
Entertainment				
Integrated infotainment system featuring:	•	•	•	•
Satellite navigation			•	•
Single CD player	•	•	•	•
AM/FM radio	•	•	•	•
Apple CarPlay™ + Android Auto™ connectivity ²	•	•	•	•
6 speakers	•	•	•	•
6.5" LCD touchscreen	•			
8" LCD touchscreen		•	•	•
Bluetooth ³ wireless technology with:	•	•	•	•
Handsfree mobile communication	•	•	•	•
Audio streaming ⁴	•	•	•	•
Voice command recognition	•	•	•	•
Auxiliary jack – front centre tray	•	•	•	•
USB connection – front centre tray	•	x2	x2	x2
Warranty				
3 Year/Unlimited Kilometre Warranty	•	•	•	•
3 Year/37,500 Kilometre Capped Price Servicing Program ⁵	•	•	•	•
12 Month Roadside Assistance Program ⁶	•	•	•	•

1. Subaru Australia reserves the right to change mechanical specification and equipment levels without notice. 2. Compatible Apple or Android device required. 3. Bluetooth® is a registered trademark of Bluetooth SIG Inc. System operation ability is subject to the Bluetooth® wireless technology specification of individual's device. 4. There may be restrictions on features available for certain devices that are not fully compliant with AVCRRP. 5. Every brand new 2018 Subaru Impreza comes with our 3 Year/37,500 Kilometre Capped Price Servicing Program. Available at participating Subaru Retailers only and does not apply to rental and some other classes of vehicle. For full Capped Price Servicing Program Terms and Conditions visit www.subaru.com.au/service/capped-price-servicing. 6. Terms and conditions apply. For a full list of benefits, visit <https://www.subaru.com.au/owner-experience/benefits/program/roadside>.

gear up for more fun

Throw something extra into the mix. With Genuine Subaru Accessories designed for all those things that make you tick. From bike carriers to cargo trays and a tow bar, you can put more in and get more out of your Impreza.

- + Styling Make your Impreza unmistakably yours with a range of stylish exterior options.
- + Protection Keep your Impreza in pristine condition with a range of mat sets, a rear bumper protector and cargo tray.
- + Cargo Get your Impreza ready to hit the highway with a wide range of quality Thule sport and cargo accessories, bike and kayak mounts.
- + Security, Convenience and Safety Keep your new wheels secure with a set of wheel lock nuts. For young families, we also offer a 6-point-harness baby seat that integrates with the Impreza's ISOFIX anchor points.

Genuine Subaru Accessories are available from your Subaru Retailer, so be sure to ask about the range when buying your new Subaru Impreza.

 To view our complete range of accessories and pricing online visit subaru.com.au/impreza/accessories

do

do

do



packs that will inspire you

From action-packed to packing the back, these quality Genuine Subaru Accessory Packs will give you the protection you need and versatility you desire to do more with your Subaru Impreza.

Both stylish and functional, each Accessory Pack has been custom made for a tailored fit to complement your Impreza and keep it looking good for years to come.

Plus all Genuine Subaru Accessories are protected by our manufacturer's warranty¹.

Protection Pack includes:

a Bootlip and Bumper Protector

Grab your gear and go without worrying about scratching the rear bumper with a tailored bootlip and bumper protector.

b Carpet Mat Set

Enjoy the comfort with a luxurious Subaru branded quality carpet mat set.

c Cargo Tray

Throw all the gear in the back with a heavy duty mat to protect the cargo area from dust and dirt.

d Weather Shields

Sleekly designed and tailored to fit onto each door individually.

Explorer Pack² includes:

Add a tow bar to the Protection Pack to squeeze more out of your everyday.

e Tow Bar

Hook your toys up to a functional and sturdy tow bar engineered specifically for the Australian market.



¹ For full warranty terms and conditions, visit subaru.com.au/accessories-information/warranty
² Explorer Pack only applicable to Subaru Impreza Hatch variants.

protect your investment

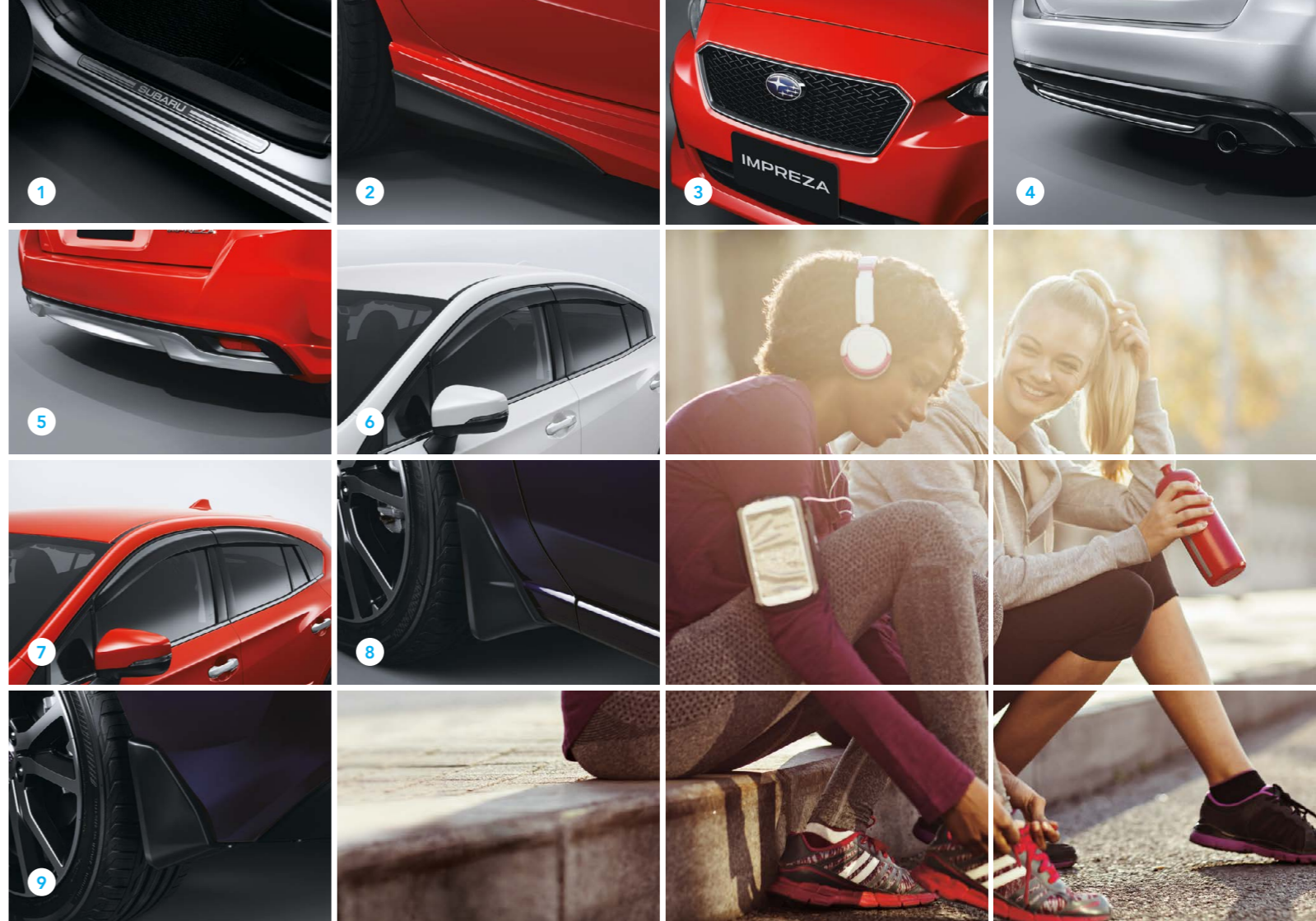
Get out and do more while protecting your Impreza from the rough and tumble of daily life. From cargo trays to bumper protectors, each accessory is tailored for a perfect fit.

ACCESSORY	Part Number	Body Type	2.0i	2.0i-L	2.0i Premium	2.0i-S
Styling						
1 Side Sill Plate (Subaru)	E1010FJ100	Sedan and Hatch	•	•	•	•
2 Side Strake Set	E2610FL000NN	Sedan and Hatch				•
3 Front Grille	J1010FL300	Sedan and Hatch	•	•	•	•
4 Rear Bumper Panel	E5510FL000	Sedan	•	•	•	•
5 Rear Bumper Panel	E5510FL010	Hatch	•	•	•	•
Protection						
6 Weather Shields	F0010FL000	Sedan	•	•	•	•
7 Weather Shields	F0010FL010	Hatch	•	•	•	•
8 Mud Guards (Front)	J1010FL001NN	Sedan and Hatch	•	•	•	•
9 Mud Guards (Rear) ¹	J1010FL004NN	Sedan	•	•	•	•

1. Mud Guards (Rear) also available for Hatch – Part Number J1010FL104NN.

To view our complete range of accessories and pricing online visit subaru.com.au/impieza/accessories

	Not Applicable
•	Applicable





10



11



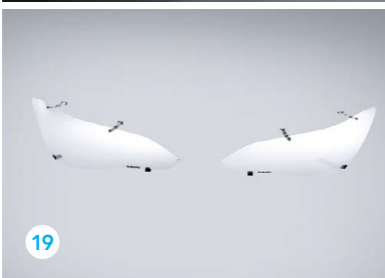
12



13



14



15



16/17



18



19



20



21

do all the things you planned

Tow it, stow it or just pack more into your every day with a wide range of Impreza compatible cargo options, plus premium Thule sport and cargo carrier accessories.

ACCESSORY	Part Number	Body Type	2.0i	2.0i-L	2.0i Premium	2.0i-S
Protection						
10 Aero Splash Guards (Set)	J1010FL500NN	Sedan				•
11 Aero Splash Guards (Set)	J1010FL600NN	Hatch				•
12 Carpet Mat Set	J501AFL000	Sedan and Hatch	•	•	•	•
13 Rubber Mat Set	J5010FL100	Sedan and Hatch	•	•	•	•
14 Cargo Tray ¹	J501AFL100	Sedan	•	•	•	•
15 Cargo Step Panel (Stainless)	E7710FL000	Hatch	•	•	•	•
16 All Weather Seat Cover – Front ²	F4110FL000	Sedan and Hatch	•	•	•	
17 All Weather Seat Cover – Rear ²	F4110FL010	Sedan and Hatch	•	•	•	
18 Body Side Moulding (Non-coloured)	J1010VA600NN	Sedan and Hatch	•	•	•	•
19 Head Lamp Protectors	J101AFL000	Sedan and Hatch	•	•	•	•
20 Bootlip and Bumper Protector	SAT6003	Sedan and Hatch	•	•	•	•
21 Door Edge Moulding – Silver (2 required) ³	F0070YA001	Sedan and Hatch	•	•	•	•

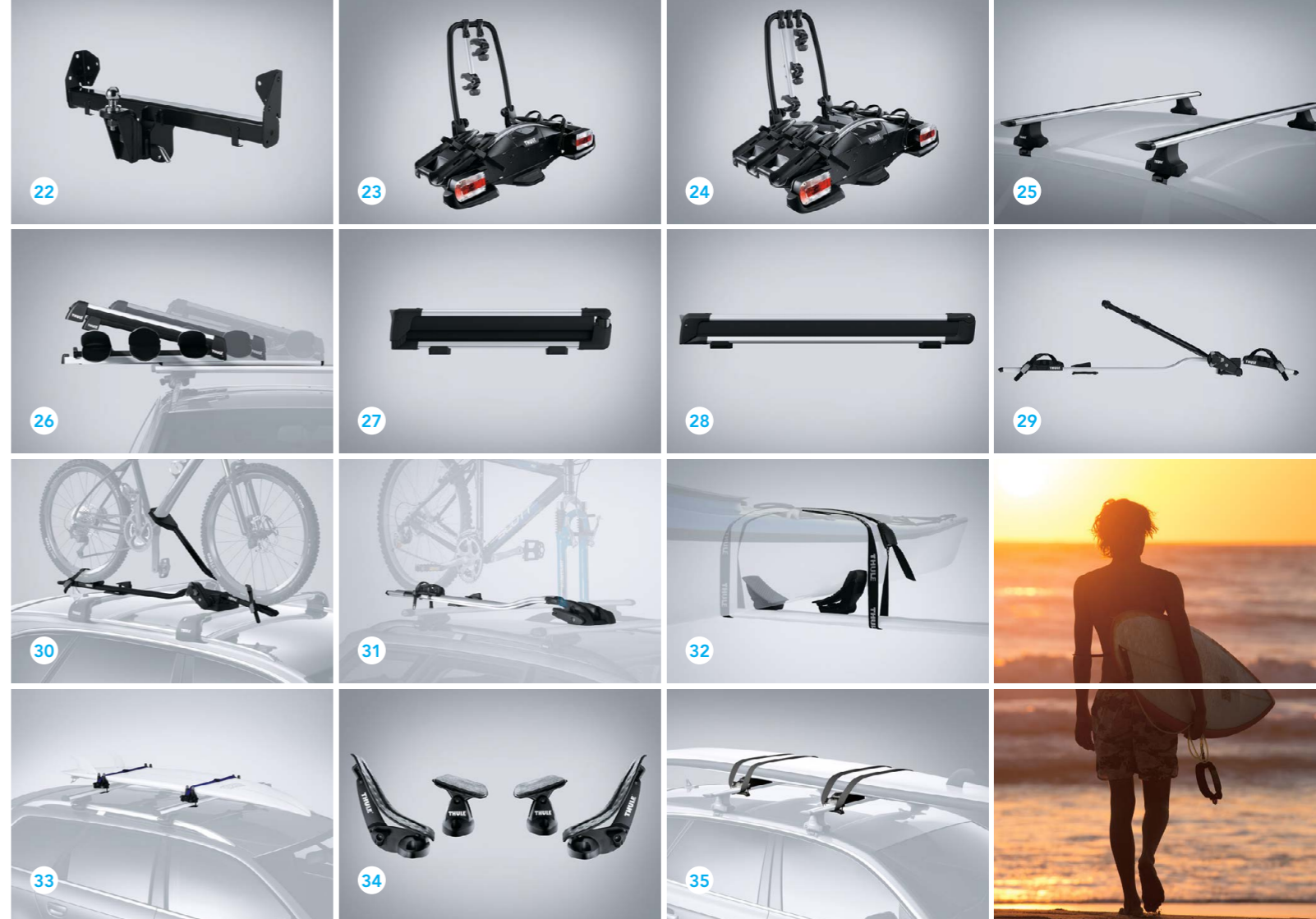
1. Cargo Tray also available for Hatch – Part Number J501AFL110. 2. Not applicable for leather seats. 3. Door Edge Moulding also available in white, dark silver, black, red, blue, dark blue and dark green.

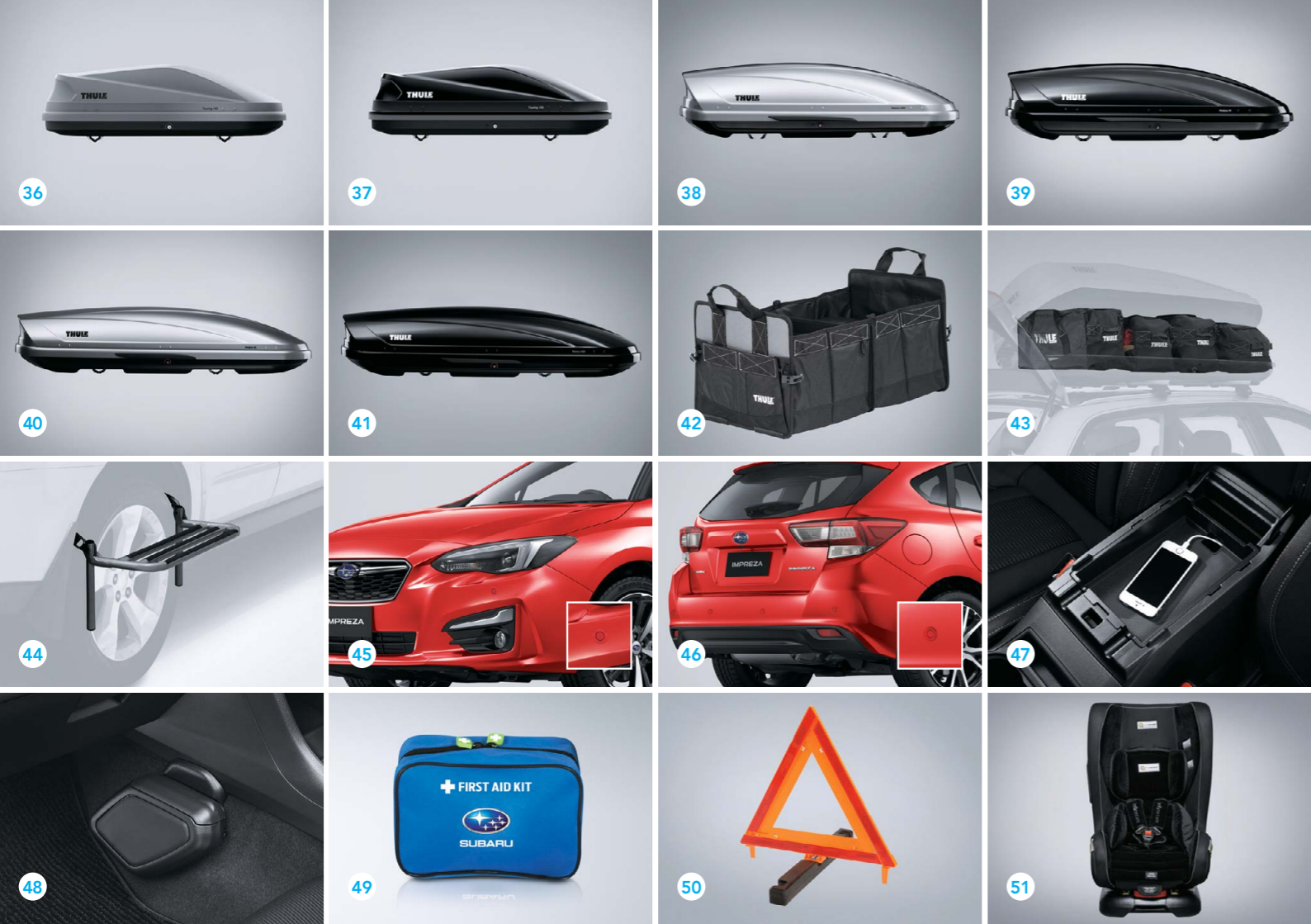
To view our complete range of accessories and pricing online visit subaru.com.au/impieza/accessories

ACCESSORY	Part Number	Body Type	2.0i	2.0i-L	2.0i Premium	2.0i-S
Cargo						
22 Tow Bar	L101AFL000	Hatch	•	•	•	•
23 Thule Tow Bar Mounted Bike Carrier (Two Bikes)	SAP925	Hatch	•	•	•	•
24 Thule Tow Bar Mounted Bike Carrier (Three Bikes)	SAP927	Hatch	•	•	•	•
25 Roof Cross Bars ¹	SAT3017	Sedan	•	•	•	•
Thule Roof Attachments and Accessories (Roof Cross Bars Required)						
26 Xtender 6 Pair Ski Holder	SA1156	Sedan and Hatch	•	•	•	•
27 Deluxe Ski Carrier (4 Pair)	SAT8023	Sedan and Hatch	•	•	•	•
28 Deluxe Ski Carrier (6 Pair)	SAT8024	Sedan and Hatch	•	•	•	•
29 Bicycle Holder (Upright)	SAT8018	Sedan and Hatch	•	•	•	•
30 Bicycle Holder - Black (Upright)	SAT8019	Sedan and Hatch	•	•	•	•
31 Bicycle Holder (Fork Mounted)	SA1042	Sedan and Hatch	•	•	•	•
32 Water Craft Holder	SA1044	Sedan and Hatch	•	•	•	•
33 Surfboard Carrier	SA1139	Sedan and Hatch	•	•	•	•
34 Kayak Carrier – DockGlide	SAT9018	Sedan and Hatch	•	•	•	•
35 Paddleboard and Mal Carrier	SAT8016	Sedan and Hatch	•	•	•	•

1. Roof Cross Bars also available for Impreza Hatch - Part Number: SAT3018.

To view our complete range of accessories and pricing online visit subaru.com.au/impieza/accessories





ACCESSORY		Part Number	Body Type	2.0i	2.0i-L	2.0i Premium	2.0i-S
Thule Roof Attachments and Accessories (Roof Cross Bars Required)							
36	Luggage Pod Touring 100 (Titan Matt) Aeroskin Finish (Small)	SAT5008	Sedan and Hatch	•	•	•	•
37	Luggage Pod Touring 100 (Black Glossy) Smooth Finish (Small)	SAT5008B	Sedan and Hatch	•	•	•	•
38	Luggage Pod Motion 200 (Silver)	SAT9014	Sedan and Hatch	•	•	•	•
39	Luggage Pod Motion 200 (Black)	SAT9015	Sedan and Hatch	•	•	•	•
40	Luggage Pod Motion 800 (Silver)	SAT9016	Sedan and Hatch	•	•	•	•
41	Luggage Pod Motion 800 (Black)	SAT9017	Sedan and Hatch	•	•	•	•
42	Go Box	SAT8005	Sedan and Hatch	•	•	•	•
43	Go Pack Set (4 Bags)	SAT8006	Sedan and Hatch	•	•	•	•
44	Side Wheel Step Up	SAT9004	Sedan and Hatch	•	•	•	•
Convenience and Safety							
45	Front Corner Parking Sensors	H481AFL000##	Sedan and Hatch	•	•	•	•
46	Reverse Sensors ¹	H481AFL200##	Hatch	•	•	•	
47	Centre Console Tray	J2010FL000	Sedan and Hatch	•	•	•	•
48	Garbage Box	J2010FL010	Sedan and Hatch	•	•	•	•
49	First Aid Kit	PR7670	Sedan and Hatch	•	•	•	•
50	Safety Triangle	SAT9007	Sedan and Hatch	•	•	•	•
51	Baby Seat – Kompressor Beyond Midnight	SAC7004	Sedan and Hatch	•	•	•	•

Denotes colour option of your choice.
 1. Reverse sensors also available for Sedan – Part Number H481AFL100##.

To view our complete range of accessories and pricing online visit subaru.com.au/impieza/accessories

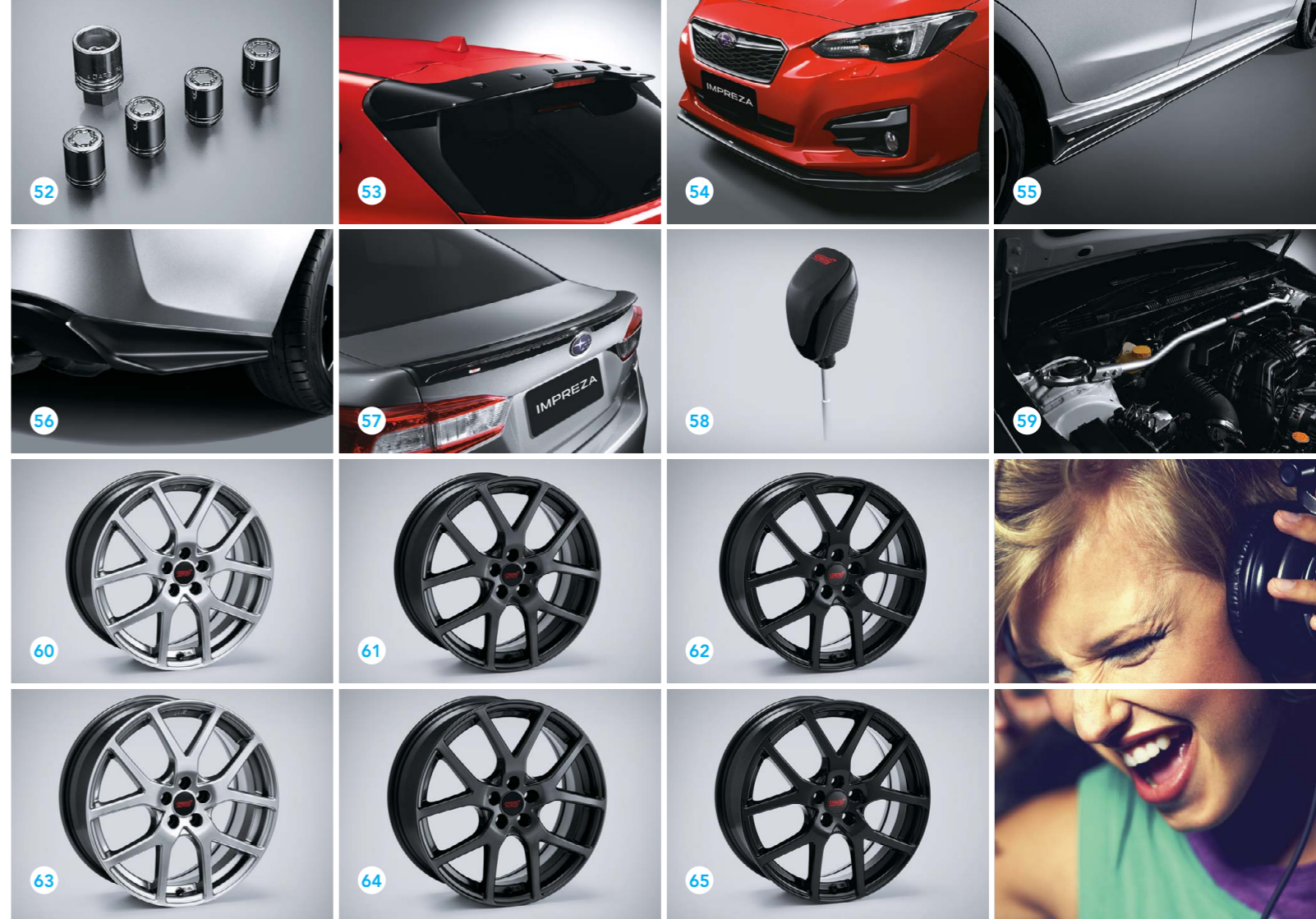
relax, we've thought of everything

From the simplest wheel lock nuts, to a comfortable and secure ISOFIX baby seat, you can be sure we have you covered.

ACCESSORY	Part Number	Body Type	2.0i	2.0i-L	2.0i Premium	2.0i-S
Security						
52 Wheel Lock Nuts	B327EYA000	Sedan and Hatch	•	•	•	•
STI Performance Parts						
53 STI Roof Spoiler	E7210FL100	Hatch	•	•	•	•
54 STI Front Under Spoiler	E2410FL000	Sedan and Hatch	•	•	•	•
55 STI Side Under Spoiler ¹	E2610FL010	Sedan and Hatch				•
56 STI Rear Side Under Spoiler	E5610FL000	Sedan	•	•	•	•
57 STI Boot Spoiler (black)	E7210FL000	Sedan	•	•	•	•
58 STI Leather Shift Knob (CVT)	C1010FL000	Sedan and Hatch	•	•	•	•
59 STI Flexible Tower Bar	E4010FL000	Sedan and Hatch	•	•	•	•
60 STI ENKEI Alloy Wheel Set (4) – 17" (Silver)	B3110FL200K	Sedan and Hatch	•	•	•	
61 STI ENKEI Alloy Wheel Set (4) – 17" (Gun Metal)	B3110FL210K	Sedan and Hatch	•	•	•	
62 STI ENKEI Alloy Wheel Set (4) – 17" (Black)	B3110FL220K	Sedan and Hatch	•	•	•	
63 STI ENKEI Alloy Wheel Set (4) – 18" (Silver)	B3110FL100K	Sedan and Hatch				•
64 STI ENKEI Alloy Wheel Set (4) – 18" (Gun Metal)	B3110FL110K	Sedan and Hatch				•
65 STI ENKEI Alloy Wheel Set (4) – 18" (Black)	B3110FL120K	Sedan and Hatch				•

1. Can not be used in conjunction with front Aero Splash Guard and Side Strake Set as they will impede the fitment of this item to the vehicle.

To view our complete range of accessories and pricing online visit subaru.com.au/impieza/accessories



welcome to the family

There are cars that simply get you from A to B, and then there are cars that empower you. Buying a Subaru is like embracing life with both hands and knowing that nothing is going to stop you. When you buy a new Subaru you are welcomed into an owner's program that gives you access to a number of benefits.



Subaru New Car Warranty – 3 Year/Unlimited Kilometres

Every new Subaru is covered by a three year unlimited kilometre manufacturer's national warranty. You can protect your investment further by purchasing an additional Subaru Assured Warranty¹ of up to three years. Visit subaru.com.au/warranty or ask your Subaru Retailer for more information.

Subaru Capped Price Servicing

With our Subaru 3 Year/37,500 Kilometre Capped Price Servicing Program², you'll now know the maximum amount you will

have to pay for your next scheduled service during the Program period. You'll also have peace of mind knowing that specialist Subaru technicians will be looking after your pride and joy using only Genuine Subaru Parts.



DataDotDNA[®]

Every Subaru is fitted with advanced engine immobilisers and the DataDotDNA^{®3} Theft Deterrent System. Microscopic dots are laser-etched with each vehicle's unique Vehicle Identification Number – making it a less attractive target for thieves.

Three Year Rebate on Theft Insurance Excess

DataDot Technology (Australia) Pty Ltd will pay your theft insurance excess⁴ (up to a maximum of \$800 including GST) should your new Subaru be stolen and not recovered within 45 days despite the presence of DataDotDNA^{®3} and warning labels.

1-Month Health Check and Chat

The 1-Month Health Check and Chat is a free consultation within the first month after delivery of your new Subaru. It allows our Subaru-trained technicians to provide quick vehicle checks, and one of our Service Advisors will answer any of your questions to help ensure an ongoing, worry-free experience.

Subaru's Map Updates

If your new Subaru is fitted with a factory line fit navigation unit your unit will be covered by Subaru's Map Update Program⁵ – guaranteeing you'll have access to the latest maps with our Latest Map Guarantee and our 3 Year Map Update Program (subject to the vehicle having its scheduled services performed through a participating authorised Subaru Service Centre).

My Subaru – online owner's destination

The My Subaru owner's portal is an online destination for owners which provides access

to exclusive benefits, tailored content, your vehicle's ownership history and much more. Login to My Subaru, the online destination for Subaru owners that will help you get more out of your vehicle, and more out of your life. Visit my.subaru.com.au

Subaru Roadside Assistance

Enjoy 12 months of Australia-wide, standard Roadside Assistance when you purchase your new Subaru. In the unfortunate situation where you need that extra helping hand, our Roadside Assistance will help¹ with arranging a tow, battery service, flat tyre service, fuel delivery and lockout service.

Subaru Certified Collision Repairer Network

With a dedicated Subaru Certified Collision Repairer² helpline available on 1800 737 179, help is available when you need it most. Available 24-hours a day, 7 days a week, help is only a phone call away. Subaru Certified Collision Repairers guarantee that trained specialists will repair your Subaru to strict factory specifications using Genuine Subaru Parts.

live life without limits

Genuine Accessories

Genuine Subaru Accessories are designed to enhance your vehicle, help you get more stuff done and have more fun! Our genuine accessories are factory approved by Subaru and are protected by the Genuine Subaru Accessories Warranty. For our full range of Subaru Impreza accessories visit subaru.com.au/impreza/accessories. For warranty information visit subaru.com.au/warranty and click on "Genuine Subaru Accessories Warranty".

Subaru Finance

Subaru Finance³ provides a range of competitive financial solutions to approved customers. Our finance specialists will help you find a finance package to meet your needs conveniently.

Subaru Insurance

It's important to enjoy the freedom of owning a Subaru, but it's also important to protect it.

A range of Subaru Insurance⁴ options provides a variety of choices, including: Subaru Comprehensive Motor Vehicle Insurance, Subaru Value Protect Insurance and Subaru Loan Protection Insurance.

Subaru Certified Used Cars

Every Subaru Certified Used Car has passed a 120-point quality inspection and comes with a one year unlimited kilometre Subaru Assured Warranty⁵ – to complement the balance of a new vehicle warranty or the statutory warranty that remains – from participating Subaru Certified Used Car Retailers.

Subaru Active

At Subaru we believe in living life to the fullest – from cycling and triathlons, to holidays and the arts. Through Subaru Active we promote the importance of a balanced lifestyle through a number of sponsorships and associations.

Get active at subaru.com.au/active

1. The Subaru Assured Warranty product is issued by the selling Subaru Retailer. Subaru Australia has no liability in respect of this warranty. 2. Every brand new 2018 Subaru Impreza comes with Subaru's 3 Year/37,500 Kilometre Capped Price Servicing Program. Available at participating Subaru Retailers only and does not apply to rental and some other classes of vehicles. For full Capped Price Servicing Terms and Conditions visit subaru.com.au/service/pricing/capped-price-servicing. 3. DataDotDNA[®] is a theft deterrent not a theft prevention mechanism. 4. Vehicles must be registered, comprehensively insured and less than 3 years old. DTA must receive a claim within 45 days of the theft. Terms and conditions apply. 5. Subaru's Map Update Program is available on MY18 Subaru Impreza variants purchased from September 25, 2017 onwards with the factory line fit Gen3 navigation unit. Subaru's Map Update Program is not available on accessory fit or dealer sourced navigation units. Subaru Australia reserves the right to add and remove eligible vehicles at its discretion. For full terms and conditions of the Subaru Map Update Program visit subaru.com.au/owner-experience/benefits/subaru-map-update-program.

1. Terms and conditions apply. For a full list of benefits, visit <https://www.subaru.com.au/owner-experience/benefits/program/roadside>. 2. Subaru Certified Collision Repairer network not available in all areas. Call 1800 737 179 or visit subaru.com.au/retailers to find your closest Subaru Certified Collision Repairer. 3. Finance provided by Macquarie Leasing Pty Limited ABN 38 002 674 982 Australian Credit Licence Number 394925 trading as Subaru Finance. All applications for credit are subject to Macquarie's normal credit approval criteria. Terms and conditions, fees and charges apply. 4. Subaru Insurance products are issued by Allianz Australia Insurance Limited AFS Licence No. 234 708 ABN 15 000 122 850 (Allianz). In arranging this insurance Subaru (Aust) Pty Limited ABN 95 000 312 792 (Subaru) and the authorised dealers act as agents of Allianz and not as your agent. Neither Subaru nor any of its related companies or appointed authorised retailers have any liability in respect of these policies. 5. The Subaru Assured Warranty product is issued by the selling Subaru Retailer. Subaru Australia has no liability in respect of this warranty.

Impreza Awards

- 2016 - Australasian New Car Assessment Program 5 star ANCAP safety rating for the entire Impreza range
- 2011 - Australasian New Car Assessment Program 5 star ANCAP safety rating for the entire Impreza range
- 2007 - Australasian New Car Assessment Program 5 star ANCAP safety rating for the entire Impreza range
- 2003 - Australia's Best Cars, Best Mid-Size Car 2003 under \$28,000, Subaru Impreza GX
- 2000 - Wheels Car of the Year, Subaru Impreza
 - QLD Car of the Year Awards, Outstanding Compact Car, Subaru Impreza

Subaru Australia reserves the right to vary vehicle specifications and standard features in Australia from those detailed in this brochure. Vehicles shown in this brochure may be fitted with accessories available at additional cost. No part of the brochure can be reproduced without written permission from Subaru Australia. Printed in Australia.

subaru.com.au

© Copyright 2017 – Subaru (Aust) Pty Limited. All rights reserved.
Subaru (Aust) Pty Limited ABN 95 000 312 792 (Subaru Australia) PO Box 8311, Baulkham Hills NSW 2153 Toll Free: 1800 226 643

