

2020 GRAND CHEROKEE

Jeep<sup>®</sup>







# SPIRITED ADVENTURES FULFILLED



## 2020 JEEP® GRAND CHEROKEE

TRAVEL WELL, FAR AND WIDE IN THE NEW 2020 JEEP® GRAND CHEROKEE. HERITAGE SETS IT ABOVE ALL OTHERS, WITH ITS EXCLUSIVE AND AUTHENTIC JEEP BRAND CAPABILITY. KNOWN FOR ITS HIGH-END LUXURY FEATURES THAT ADD COMFORT AND STYLE TO EVERY RIDE, GRAND CHEROKEE ALSO TAKES TECHNOLOGY TO THE NEXT LEVEL WITH AVAILABLE UCONNECT® SERVICES. YOU'LL BENEFIT FROM ITS ABILITY TO INFORM YOU WITH AVAILABLE REAL-TIME PERFORMANCE, NAVIGATION AND COMMUNICATION DATA VIA THE DRIVER INFORMATION DISPLAY. MORE THAN 70 STANDARD AND AVAILABLE SAFETY AND SECURITY FEATURES ARE ON BOARD, INCLUDING THE VERY LATEST IN ACTIVE SYSTEMS THAT KEEP WATCH, FOR WELCOME PEACE OF MIND. FULFIL YOUR QUEST FOR ADVENTURE BY DRIVING A LUXURIOUS LEGEND.



# TRAVEL IN SPLENDOUR



Cushioned and quilted available upscale leather-trimmed seats offer lush comfort, while the available leather-wrapped doors, centre console, glove box door, instrument panel and armrests are soft to the touch. The leather-wrapped steering wheel is a standard premium feature on all trim levels.

This large, available 8.4-inch colour touchscreen, with its new fluid design and Piano Black detail, acts as your navigation and communication hub. Within it, you'll find full smartphone integration, voice commands, pinch-to-zoom and so much more.

Enjoy elegance with upgraded bezels and accents for real textured metal. Standard on Grand Cherokee Summit,<sup>®</sup> SRT<sup>®</sup> and Trackhawk<sup>®</sup> models. Optional on Overland<sup>®</sup> and Limited models.

U.S. Uconnect<sup>®</sup> screen shown.



**COMMANDVIEW® DUAL-PANE PANORAMIC SUNROOF**

This dual-pane ceiling with single sliding-glass panel includes a power-controlled sunshade in front and a fixed-glass window in the rear. Available.



U.S. Uconnect® screen shown.





**HEATED AND VENTILATED SEATS** Both the first and second rows are heated, with instant cooling seat ventilation for the driver and front passenger. Available.

**DUAL-ZONE AUTOMATIC TEMPERATURE CONTROL** Constantly adjusts air temperature inside the cabin to create separate customised environments for the driver and front passenger. Standard.

**ACTIVE NOISE CANCELLATION** Sound-absorbing technology enhances the effect of the acoustic glass. Available.

**REMOTE PROXIMITY ENTRY** Keep the key fob in your pocket, open the door, get seated with your foot on the brake, press the Start button and simply shift into Drive. Standard.

**REMOTE START<sup>1</sup>\*** Climb into a pleasantly pre-heated or pre-cooled Grand Cherokee — featuring a 100-m range. Available.

**ACOUSTIC GLASS** Acoustic windshield and laminated front-door glass help remove the distractions of traffic and wind noise to deliver a noticeably hushed and peaceful ride. Standard. Rear sunscreen acoustic laminated glass is standard on Grand Cherokee Summit,<sup>®</sup> SRT<sup>®</sup> and Trackhawk<sup>®</sup> models.



\*A note about this brochure: all disclosures can be found on the last page.





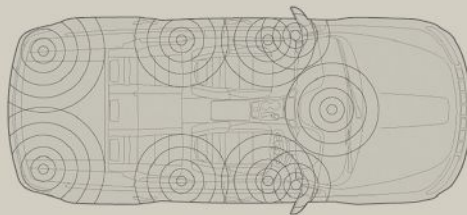
## YOUR 19-SPEAKER PRIVATE CONCERT

**ENTER THIS VIRTUAL CONCERT HALL** and take your seat. Select your program, adjust the volume, and enjoy a true and very dynamic Surround Sound experience, brought to you by Harman Kardon®. Available.

**PRECISELY TUNED** to maximise the cabin acoustics of Grand Cherokee, the available Harman Kardon 19-Speaker Premium Audio System takes you to places few other systems can.

**harman/kardon®**

**UNMATCHED DYNAMICS** feature a 10-inch subwoofer, designed to fill your personal soundstage. Get ready to feel the beat, as well as hear it.





# AUTHENTIC 4x4 AUTHORITY

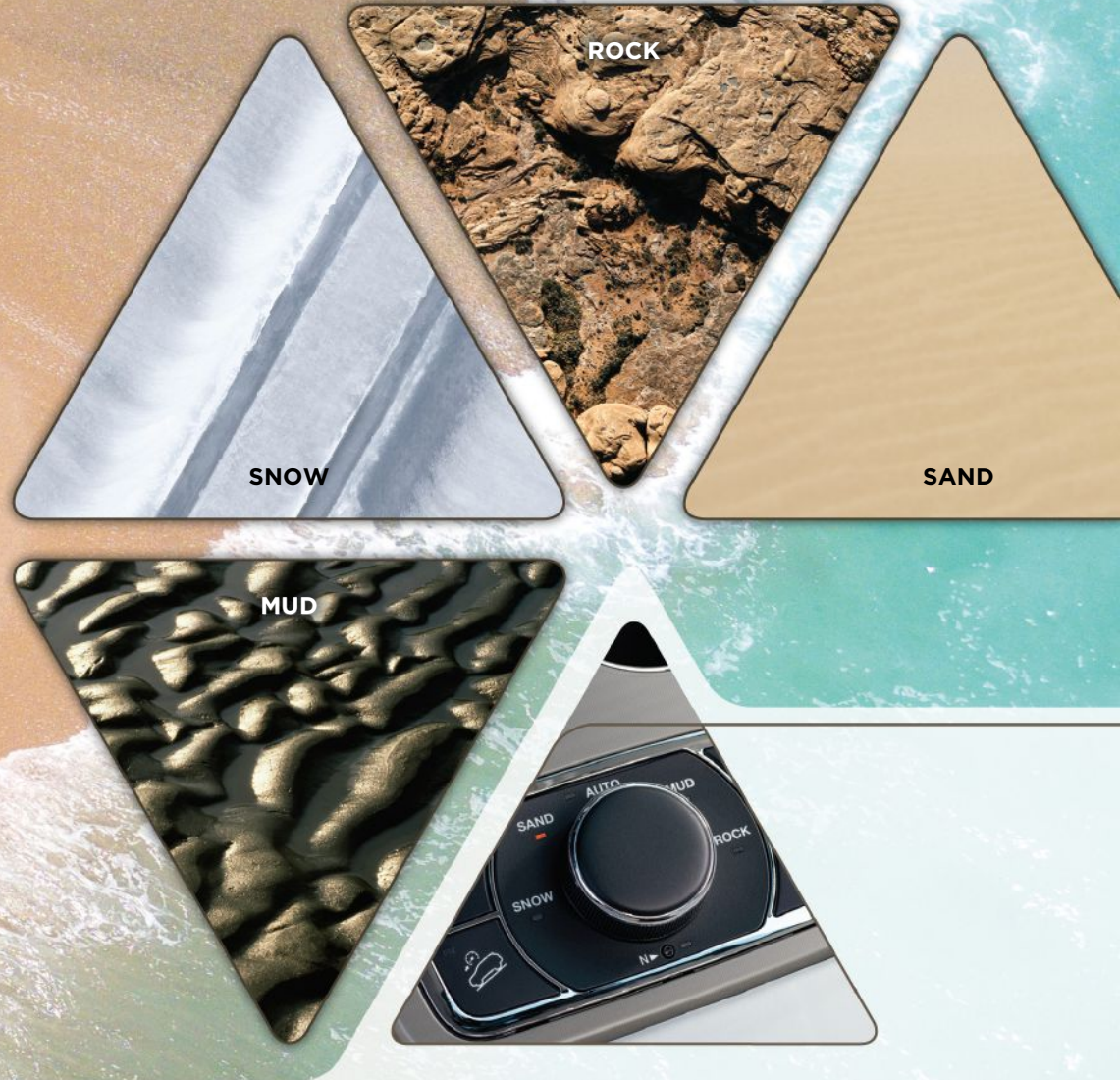
## JEEP® BRAND 4WD SYSTEMS

**QUADRA-DRIVE® II** With the Electronic Limited-Slip Rear Differential, you can gain ultimate traction by transferring up to 100 percent of torque to the rear wheel(s) with the best grip. Available.

**QUADRA-TRAC II®** All-Speed Traction Control quickly distributes power to the axle with the most traction. The two-speed transfer case acts quickly to keep you moving wherever challenging road conditions are found. Available.







### SELEC-TERRAIN® TRACTION MANAGEMENT SYSTEM

Five selectable settings let you dial in to the type of 4WD traction control your Grand Cherokee needs at any particular moment. Selec-Terrain® pairs with an available 4x4 system, giving you the ability to tailor your capability to the road and driving conditions. Selec-Terrain helps to adapt traction performance with a selectable dial that features Snow, Sand, Auto, Mud and Rock settings. This intelligent system gives you ultimate driving confidence by coordinating 12 vehicle systems, including throttle control, transmission shifting, transfer case, traction control and Electronic Stability Control (ESC).<sup>2</sup> Available.

### OFF-ROAD PAGES

Access real-time performance data so you know just how far your suspension is travelling, and see how you're faring on the trail with the tilt-and-pitch gauge. In-depth vehicle diagnostics, including wheel turn, articulation and transmission temperature, all help to provide an optimised experience. Available.





4x4 CHEROKEE

## POWERFUL MOTION CONTROL

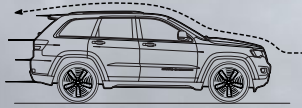
**QUADRA-LIFT® AIR SUSPENSION** adjusts your ride height to improve handling based on your driving needs. Quadra-Lift® smooths on-road handling, helps aid efficiency, and makes entry, exit and loading much easier. Raises up to 264 millimetres and lowers 40 millimetres from normal ride height. Allows for 508 millimetres of water fording<sup>3</sup> Available.



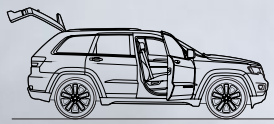
OFF-ROAD 1



OFF-ROAD 2



AERO



PARK





**SELEC-SPEED® CONTROL** adds Hill Ascent Control to the familiar Hill Descent Control. Hill Ascent engages the throttle to help provide stable low-range control when going uphill, whereas Hill Descent uses engine and physical braking to aid in vehicle control when going downhill. Available.

## YOUR BADGE OF CAPABILITY

**EVERY TRAIL RATED® JEEP® GRAND CHEROKEE IS PURPOSE-BUILT** to conquer the most challenging road conditions out there. You're equipped to experience everything the road has to offer, thanks to authentic Trail Rated® Jeep® Brand DNA. The Trail Rated Badge tells the world your Grand Cherokee is fully equipped to Go Anywhere, Do Anything® and perform with exceptional 4WD capability. Every Trail Rated vehicle must successfully pass tests in five performance categories: Traction, Articulation, Manoeuvrability, Ground Clearance and Water Fording<sup>3</sup>.





## THE BEAUTY OF POWER

WITH A 522-kW SUPERCHARGED V8 ENGINE UNDER THE HOOD, THE AWE-INSPIRING TRACKHAWK® WILL DEFINITELY MAKE A FAST IMPRESSION THAT TURNS HEADS. WITHIN ITS WELL-APPOINTED INTERIOR, YOU'LL RELISH THE THRILL OF THE CHASE WITH EXCEPTIONAL POWER UNDER YOUR COMMAND.



**QUADRA-TRAC® ON-DEMAND 4WD SYSTEM** Authentic Jeep® Brand 4WD resides in an Electronic Limited-Slip Rear Differential and a single-speed transfer case.

**SELEC-TRAC® WITH LAUNCH CONTROL** Adjust your suspension based on the way you want to feel the road below. Press a button to choose from five performance settings: Track, Sport, Auto, Snow and Tow. Press the system's Launch Control button to optimise every possible setting for maximum acceleration off the line.

**BREMBO® HIGH-PERFORMANCE BRAKE SYSTEM** Four-wheel disc antilock brakes provide important stopping power, from 96 to 0 kph in 34 meters. Massive 400-millimetre rotors with six-piston callipers on the front and 350-millimetre rotors with four-piston callipers on the rear are clad in a distinctive yellow finish.







# STRENGTH AND POISE

## ADVANCED POWERTRAIN OPTIONS

**3.0 V6 ECODIESEL ENGINE** This efficient and strong performer delivers a smooth ride at all speeds. And with its command of 184 kW and a hefty 570 N•m of torque, the EcoDiesel provides a surge of towing strength that can haul up to 3500 kg when properly equipped. Available.

**THE EFFICIENT AND POWERFUL 3.6 PENTASTAR® V6 ENGINE** is Grand Cherokee's standard proven performer. Its strength can pull up to 2812 kg when properly equipped. Engine Stop/Start (ESS) technology seamlessly and automatically shuts off the engine at full stops, then re-engages for takeoffs, resulting in a savings in fuel and lower emissions. Standard.

**THE 5.7 V8 ENGINE WITH POWERFUL TOWING** Towing of up to 259 kW @ 5200 rpm is earned via 520 N•m @ 4200 rpm when properly equipped. Quick and responsive, you'll also enjoy efficiency gains due to the helpful Variable Valve Timing (VVT). Available.

**THE 6.4 SRT® V8 ENGINE** with Fuel Saver Technology is the very heart of Grand Cherokee SRT®. The heart of Grand Cherokee SRT churns out 344 kW and 624 N•m of torque. Fuel Saver Technology optimises efficiency when V8 power is not required, with no sacrifice in performance.

**6.2 SUPERCHARGED V8 ENGINE** It powers the Grand Cherokee Trackhawk®. With 522 kW under the hood, it delivers a thrilling driving experience.

**STANDARD 8-SPEED AUTOMATIC TRANSMISSION** Moves with efficient, smooth-riding might, consistently using energy to its best advantage. You'll feel the enhanced acceleration and appreciate the reduced fuel consumption. Increased torque adds strength to pull. Switch to Sport Mode, available on SRT and Trackhawk, and both shifts and engine power are adjusted to hand over a sportier driving experience.

**ECO-MODE MAXIMISES FUEL EFFICIENCY** by automatically modifying the shift schedule and torque converter. When you activate Eco-Mode, idle speed is gently lowered, allowing gains in precious fuel economy.



**TRAILER TOW PREP GROUP.** Bring your favourite toys with heavy-duty engine cooling, rear load-levelling suspension and a 180-amp alternator. Available.



Properly secure all cargo.





**ACCESS THE 7-INCH RECONFIGURABLE MULTI-VIEW DISPLAY CLUSTER** while keeping your eyes safely on the road via controls on the steering wheel. You'll instantly scroll through a selection of vehicle data displayed within your instrument panel, including navigation, performance stats, alerts and fuel consumption. Standard.





# ALWAYS IN TOUCH

YOUR WINDOW INTO A WIDER WORLD OF  
CONNECTIVITY HAS OPENED. THE UCONNECT®  
SYSTEM OFFERS A WIDE RANGE OF COMMUNICATION  
AND ENTERTAINMENT SERVICES, DELIVERING THEM  
STRAIGHT INTO YOUR JEEP® GRAND CHEROKEE.



## **TEXT WITHOUT USING YOUR HANDS**

Send and receive calls and text while driving safely with Apple CarPlay™<sup>6</sup> or Android Auto™<sup>7</sup> letting you take control through the Uconnect touchscreen. Standard.

## **TALK AND GRAND CHEROKEE RESPONDS**

Use voice commands with Siri® Eyes Free<sup>4</sup> and your connected iPhone® to create and send texts, make and receive calls, access directions, and play music. Standard.

## **NAVIGATION**

Dinner reservations at the new place in town? Uconnect® employs GPS Navigation for audible turn-by-turn directions, and detailed 3-D maps help to ensure you arrive on time. Use Voice Command and say the complete address to get directions quickly. Available.





## TOUCHSCREEN CONTROLS

Set temperature controls, activate heated seats and steering wheel, and so much more — all from the touchscreen. A drag-and-drop menu allows you to highlight your top six favourite features and services so they're always in sight on your 8.4-inch Uconnect® touchscreen display.

U.S. Uconnect® screens shown.

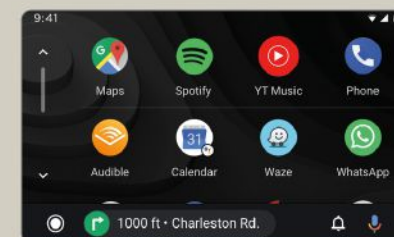


Works with  
**Apple CarPlay**

Display your favourite iPhone® apps right on your Uconnect touchscreen. Access your iTunes® library, call anyone in your contacts list or just ask Siri®4 to help you out while you drive. Get directions, make calls and send messages, and connect to Apple Music, all without pausing your journey. Standard.

## androidauto

Bring the best of Google along with you in your Uconnect system. Easy touchscreen navigation and voice recognition let you access Google Play Music, get directions with Google Maps™ and ask Google any question on the go, at any time. Standard.





**ADMIRATION  
COMES FULL CIRCLE**





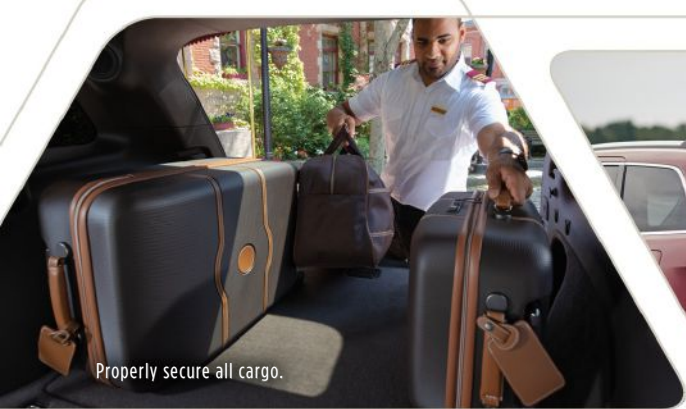


Properly secure all cargo.

**ENHANCE EVERY DRIVE WHEN YOU FULLY UTILISE THESE GRAND CHEROKEE FEATURES. THEY OFFER UNIQUE STORAGE AND CARGO-CARRYING OPTIONS THAT ADD FUNCTION TO A BEAUTIFULLY SPACIOUS INTERIOR.**

**THIS INTERIOR RE-ARRANGES TO FIT YOUR NEEDS.** Each section of the 60/40 split-folding rear seat folds separately to create a customised space, including a large rear cargo area that offers up to 1.93 cu m with the rear seat folded down. Standard.

**OPERATE THE POWER LIFTGATE** by pressing a button on your key fob to open Grand Cherokee's rear cargo area before you arrive. Fill the space with a full array of luggage, groceries and supplies when the 60/40 split-folding rear seats are folded down. Available.



Properly secure all cargo.





WITH MORE THAN 70 STANDARD AND AVAILABLE SAFETY AND SECURITY FEATURES, INCLUDING BLIND SPOT MONITORING<sup>8</sup> AND REAR CROSS-PATH DETECTION<sup>9</sup> SYSTEMS, JEEP® GRAND CHEROKEE HELPS YOU REMAIN CONFIDENT DRIVING IN ALL WEATHER CONDITIONS, OVER ALL TERRAIN. THE STRENGTH OF A REINFORCED STRUCTURE ADDS A WELCOME LAYER BETWEEN YOU AND THE OUTSIDE WORLD, WITH BOTH PASSIVE AND ACTIVE SYSTEMS WORKING TOGETHER TO KEEP EVERYONE SAFE AND SECURE.

## TRUE PEACE OF MIND







## ACTIVELY ON GUARD

AN ARRAY OF SENSORS KEEPS WATCH OVER YOUR PERIMETER AND WILL NOTIFY YOU WITH AUDIBLE AND VISUAL SIGNALS SHOULD ANOTHER VEHICLE OR OBJECT ENCROACH YOUR SAFETY ZONES. IT'S THE LATEST TECHNOLOGY TO HELP JEEP® GRAND CHEROKEE ACTIVELY STAND GUARD EVERY SINGLE MOMENT YOU'RE BEHIND THE WHEEL.

### BLIND SPOT MONITORING<sup>8</sup> AND REAR CROSS-PATH DETECTION SYSTEMS<sup>9</sup>

These systems monitor the space between you and other drivers. When a side or rear blind spot is encroached, you're notified via helpful icons illuminated on sideview mirrors and an audible chime. Available.

### PARKVIEW<sup>®</sup> REAR BACK-UP CAMERA<sup>9</sup> WITH TRAILER VIEW

Back out safely with grace. This system helps bring previously hidden rear objects to your attention, either on-screen or with an audible warning, in good time to react. You can also keep an eye on anything in tow while in motion. Standard.

### PARKSENSE<sup>®</sup> REAR PARK ASSIST SYSTEM<sup>9</sup>

Works in tandem with ParkView<sup>®</sup> Rear Back-Up Camera<sup>9</sup>. When the vehicle is in Reverse, the screen displays a dynamic distance grid to help gauge your rear perimeter. Standard.

### ADAPTIVE CRUISE CONTROL WITH STOP (ACC STOP)<sup>10</sup>

Take the guesswork out of keeping a safe distance from the car ahead while cruising on the highway. The system automatically adjusts cruising speed to maintain a preset distance between you and the vehicle ahead and can bring Grand Cherokee to a complete stop without driver intervention to help avoid a collision. Available.

### FULL-SPEED FORWARD COLLISION WARNING WITH ACTIVE BRAKING (FCW+)<sup>11</sup>

Sensors detect when Grand Cherokee may be approaching another vehicle too rapidly, sending an audible and visual alert to the driver and providing 1.5 seconds of brake assistance if the driver does not react in time. Available.

### PARALLEL AND PERPENDICULAR PARK ASSIST SYSTEM<sup>9</sup>

This active guidance system controls steering automatically using ultrasonic sensors that help you ease into parking spots. Includes ParkSense<sup>®</sup> Front Park Assist<sup>9</sup> sensors. Available.

### LANESENSE<sup>®</sup> LANE DEPARTURE WARNING WITH LANE KEEP ASSIST (LDW+)<sup>12</sup>

Provides a visual and audible warning should the vehicle drift outside of lane boundaries or if the driver's hands are off the wheel. Available.

### RAIN-SENSING WINDSHIELD WIPERS AND RAIN BRAKE SUPPORT

Showers should never be a show-stopper. Front wipers activate when raindrops are detected. The smart brake system helps dry the brake rotors on wet roads. Available.





#### **ELECTRONIC STABILITY CONTROL (ESC)<sup>2</sup>**

A vehicle-wide network of safety sensors helps maintain vehicle control, providing instant aid should it detect you're veering off your intended path. ESC<sup>2</sup> coordinates Electronic Roll Mitigation (ERM), Antilock Brake System (ABS) and Brake Assist, All-Speed Traction Control and Trailer Sway Control (TSC)<sup>2</sup>, sending them into action when needed. Standard.

#### **TRAILER SWAY CONTROL (TSC)<sup>2</sup>**

Crosswinds and traffic hold no sway over you and your payload. As part of ESC,<sup>2</sup> TSC<sup>2</sup> helps keep you and the toys you tow safely on course. Standard.

#### **SENTRY KEY<sup>®</sup> ENGINE IMMOBILISER**

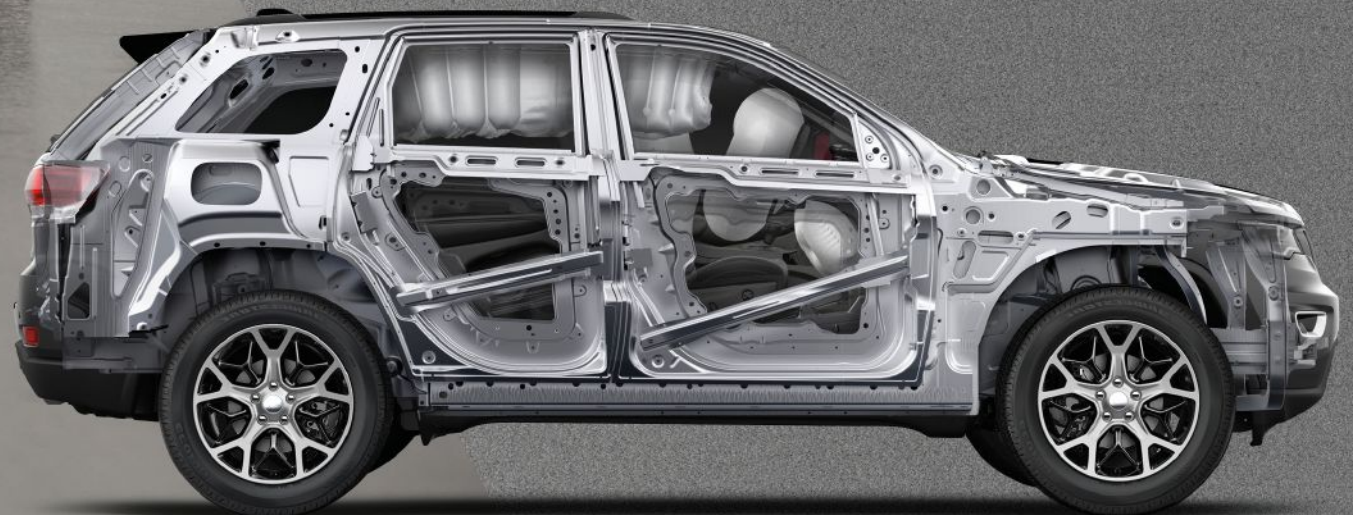
A unique, embedded key code matched only to your vehicle helps keep your Grand Cherokee safely where you parked it. Standard.

#### **A SECURE AIR BAG<sup>14</sup> SYSTEM**

Your need for security is fully respected with Grand Cherokee's all-around air bag<sup>14</sup> system. Full-length side-curtain, seat-mounted side thorax, and advanced multistage front and driver's inflatable knee blocker air bags<sup>14</sup> all work together to help provide protection. Standard.

#### **CHASSIS STRENGTH**

Maintain peace of mind with this strong safety cage constructed with 65 percent high-strength steel. Standard.





A scenic photograph of two Jeep Grand Cherokee SUVs parked on a pebbly beach. The white SUV is in the foreground, angled towards the left, while the red SUV is further back to the right. The sun is low on the horizon, creating a strong lens flare and casting long shadows. The background features a forested hillside under a cloudy sky.

THE ROAD TO FREEDOM

JEEP GRAND CHEROKEE MODEL SHOWROOM



LIMITED



**GRAND CHEROKEE LIMITED** turns heads with a beautifully trimmed exterior that encases a well-appointed cabin brimming with upscale standard features. Premium available amenities let you create a Grand Cherokee that reflects your taste for excellence.

U.S. Uconnect® screen shown.





U.S. Uconnect® screen shown.

**GRAND CHEROKEE TRAILHAWK®** It's purpose-built to hand over a sturdy, strong and comfort-laden ride while travelling over the most demanding terrain and through challenging weather conditions. Its robust capability keeps you moving with strength and grace, no matter what's in front of you.





**GRAND CHEROKEE OVERLAND®** carries a reputation for luxury that's recognised around the world, born of a well-established reputation for renowned capability matched with abundant comforts. An impressive list of high-end standard features makes for extraordinary travels.

U.S. Uconnect® screen shown.



SRT



U.S. Uconnect® screen shown.

**GRAND CHEROKEE SRT®** is renowned for merging advanced technology with extreme power. Designed for speed inside and out, SRT® is ready to use impressive power to turn heads. It's all due to incredible SRT systems that adapt to the road, letting you accelerate with precision and ride in exceptional comfort.





**GRAND CHEROKEE TRACKHAWK®** Within its driver-focused cockpit, you command an amazing 522 kW. This is performance at its most exhilarating, matched with racing style at its most luxurious.

U.S. Uconnect® screen shown.



# Jeep



(1) Check state and local laws regarding the use of remote start systems. (2) Always drive carefully, consistent with conditions. Always wear your seat belt and obey traffic laws. (3) Do not attempt water fording unless depth is known and consistent with the vehicle's water fording rating in the Owner's Manual. Traversing water can cause damage that may not be covered by the new vehicle warranty. Always off-road responsibly in approved areas. (4) Requires an iPhone with Siri. Certain features are not available while the vehicle is in motion. iPhone must be within active cellular range. Customer's existing iPhone data rates apply to Internet-supported features. (5) The Uconnect Phone requires a mobile phone equipped with the Bluetooth Hands-Free Profile. To check phone compatibility, please visit [www.UconnectPhone.com](http://www.UconnectPhone.com). (6) Requires compatible iPhone. See dealer for phone compatibility. Data plan rates apply. Vehicle user interface is a product of Apple. Apple CarPlay is a trademark of Apple Inc. iPhone is a trademark of Apple Inc., registered in the US and other countries. Apple terms of use and privacy statements apply. (7) To use Android Auto on your phone screen, you'll need an Android phone running 5.0 or higher and the Android Auto App. Google, Android, Android Auto, YouTube and other related marks and logos are trademarks of Google LLC. (8) Standard on select models. Always check visually for vehicles prior to changing lanes. (9) Always check entire surroundings and look before proceeding. An electronic drive aid is not a substitute for conscientious driving. Always be aware of your surroundings. (10) This system is a driver convenience system, not a substitute for active driver involvement. The driver must remain aware of traffic conditions and be prepared to use the brakes to avoid collisions. (11) This system is an alert system for the front of the vehicle. It is not a substitute for active driver involvement. The driver must remain aware of traffic conditions and be prepared to use the brakes to avoid collisions. (12) This system is a driver convenience system, not a substitute for active driver involvement. The driver must remain aware of traffic conditions and maintain control of the vehicle. (13) Voice Text Reply feature requires a compatible mobile device enabled with Bluetooth Message Access Profile (MAP). iPhone and some other smartphones do not currently support Bluetooth MAP. Visit [www.UconnectPhone.com](http://www.UconnectPhone.com) for system and device compatibility. Ensure MAP is ON and incoming message notification is enabled. Also requires the use of a compatible smartphone that supports text messaging and Bluetooth. Check [www.UconnectPhone.com](http://www.UconnectPhone.com) for device compatibility. (14) Always sit properly in designated seating positions with seat belts securely fastened at all times.

©2019 FCA US LLC. All Rights Reserved. Jeep, Mopar, SRT, the Jeep grille, Grand Cherokee, Grand Cherokee Summit, CommandView, Go Anywhere, Do Anything, LaneSense, Limited, Overland, ParkSense, ParkView, Pentastar, Quadra-Drive II, Quadra-Lift, Quadra-Trac, Quadra-Trac II, Sentry Key, Selec-Speed, Selec-Terrain, Selec-Track, Trackhawk, Trailhawk, Trail Rated and Uconnect are registered trademarks of FCA US LLC.

Apple, Apple Music, iPhone, iTunes and Siri are registered trademarks and Apple CarPlay is a trademark of Apple Inc. Audible is a registered trademark of Audible, Inc. Bluetooth is a registered trademark of Bluetooth SIG, Inc. Blu-ray Disc is a registered trademark and Blu-ray is a trademark owned by Blu-ray Disc Association. Brembo is a registered trademark of Brembo SpA. Goodyear is a registered trademark of The Goodyear Tire & Rubber Company. All rights reserved. Google, Google Maps, Google Play, Android, Android Auto, YouTube, YouTube Music, Waze and other related marks and logos are trademarks of Google LLC. Harman Kardon is a registered trademark and GreenEdge is a trademark of Harman International Industries, Inc. Michelin is a registered trademark of Michelin North America, Inc. Pirelli is a registered trademark of Pirelli & C. SpA. Spotify is a registered trademark of Spotify AB. Sirius, XM and all related marks and logos are trademarks of SiriusXM Radio Inc. WhatsApp is a registered trademark of WhatsApp Inc.

This brochure is a publication of FCA US LLC. All product illustrations and specifications are based upon current competitive information at the time of publication approval. FCA US LLC reserves the right to make changes from time to time, without notice or obligation, in prices, specifications, colours and materials, and to change or discontinue models which are considered necessary to the purpose of product improvement or for reasons of design and/or marketing.

Jeep<sup>®</sup> is a registered trademark of FCA US LLC.