



TGS 6x6

Chassis

▶ M Cab

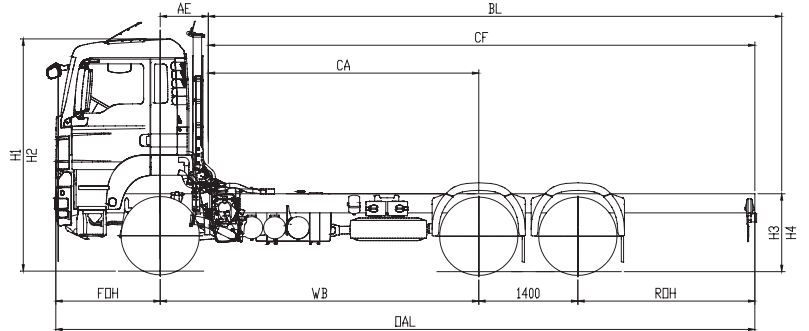
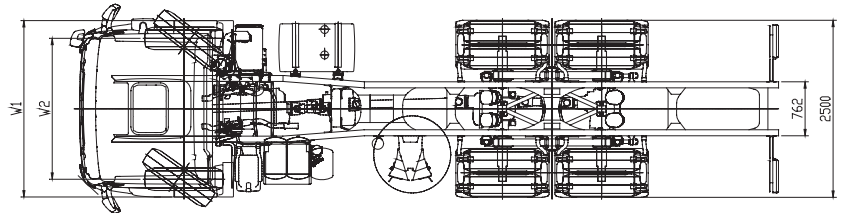
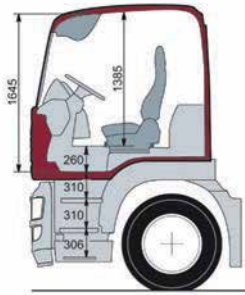
ENGINEERED TO SAVE YOU MONEY ▶



SPECIFICATION DATA

M CAB

GVM 33,000kg GCM: 90,000



MANTGS6XSPEC16

Wheelbase	M CAB WEIGHTS			TURNING CIRCLE	
	Front (kg)	Rear (kg)	Total (kg)	Kerb to Kerb (m)	Wall to Wall (m)
3600mm	5360	4830	10190	18.5	20.0
4500mm	5415	4985	10400	21.3	22.8

Wheelbase	DIMENSIONS						MAX	EMPTY	LOADED	EMPTY	LOADED		
	FOH	ROH	OAL	AE	CA	CF	BL	H1	H2	H3	H4	W1	W2
3600mm	1492	1500	7992	650	2950	5850	5930	3344	3279	1170	1100	2490	2240
4500mm	1492	2500	9892	650	3850	7750	7670	3344	3279	1170	1100	2490	2240

Engine HP	ENGINE SPECIFICATIONS			TRANSMISSION SPECIFICATIONS		
	Model	Power Rating	Torque	Model	Transmission Ratios	Standard Differential Ratio
440HP	MAN D20 10.5 Ltrs	324kW @ 1600 - 1900rpm	2100Nm @ 1000 - 1400 rpm	ZF 12 AS 2330 OD	12.33 - 0.78	4.00

1. All above weights and dimensions are subject to confirmation and may vary depending on final specification. Manufacturing weight tolerance +/- 3%.
2. State and Federal regulations over ride information supplied on this brochure.
3. Vehicle images in this specification sheet are for illustration purposes only.
4. Maximum body length is calculated using a rear overhang of 60% of the wheelbase to a maximum of 3.7m.
5. Tare weight includes 100 litres of fuel, spare wheel and steel wheels.
6. Specifications are subject to change without notice. Copyright © 2014, MAN Automotive Imports Pty Ltd.

MAN Automotive Imports Pty Ltd
 72 Formation Street, Wacol, QLD 4076 • PO Box 301, Goodna QLD 4300
 T: (07) 3271 7777 • www.man.com.au

