

ASX



love that car



ASX

BUILT FOR OWNING THE CITY

Whatever you're doing, wherever you're going, do it in style with the Mitsubishi ASX. Built for the working week as much as the weekend, the compact ASX has stacks of storage, super smart technology, zippy performance and effortless style. Owning the city has never been this much fun.

ASX, BUILT FOR THE TIME OF YOUR LIFE.

Since 1917 Mitsubishi Motors has been at the forefront of technological innovation. Having launched the inventive Super-Select 4WD system and the world's first Plug-in hybrid electric SUV, our vehicles have been tested, trialled and triumphant in some of the earth's toughest terrain including the Dakar rally. These engineering milestones, together with our commitment to reliability and ingenuity sets us apart. As we continue to move forward, pushing the boundaries of innovation, you can rest assured your Mitsubishi has been built for the time of your life.

Available in 2WD and AWD, ASX is part of the all-thrilling, ever reliable Mitsubishi SUV range.



ASX

Outlander

Pajero Sport

Pajero

Triton

AGILE





STYLISH



CUT THROUGH THE CRAWL

Don't get angry at the traffic, stay cool inside the comfortable, tech surrounds of your ASX.

Snuggle back into your seat and enjoy the balance of comfort, spaciousness, style and intelligent design that includes:

- + Smartphone Link Display Audio (SDA)[^], a true extension of your smartphone via Android Auto™¹ or ApplePlay². Connected to a 7" touchscreen, you can access your phone's compatible apps and get direction, make calls, send and receive messages and listen to music from any source including DAB+ radio. With a smartphone storage tray and USB connectors in the centre console, everything is taken care of.
- + Find your perfect driving position with a soft touch leather, adjustable steering wheel with built in phone, audio and cruise control switches.

- + Generous legroom with space for five adults and 60/40 split fold rear seats for added flexibility.
- + Key-free convenience with XLS' Smart Key* that unlocks the doors and tailgate. Perfect for when the key is still in your pocket or purse, or your hands are full with shopping.
- + XLS models also let you power up your ignition with the touch of a button thanks to One Touch Start*.
- + You can also experience warm indulgence with XLS' heated front seats* and leather seat facings*.



XLS model shown. *XLS model only. ^Smartphone Link Display Audio (SDA) supports Android™ 5.0 or higher/iOS 8.0 or higher for use with Android Auto™ / ApplePlay. Smartphone Link Display Audio will not operate in areas with no service signal and may not operate in supported areas where the signal is weak. Users are responsible for all charges incurred using smartphones and iPhones to connect to Android™ and CarPlay respectively. Some functions may not be available for use depending on the user's location. Only compatible Apps can be used. Android™ and Android Auto™ are trademarks of Google Inc. 2. Apple CarPlay and iPhone, are trademarks of Apple Inc., registered in the US and other countries.



ASX

DISTINCTIVE
LIKE YOU





Looking good and feeling good is what Mitsubishi ASX is all about. From its fashionable front grille and shimmering chrome highlights to its black wheel arch-garnished 18" alloy wheels and LED Daytime Running Lamps, ASX turns heads while you turn those tight city streets.

LET THE GOOD TIMES ROLL

- + Pirouette on a 10 cent piece and score that precious park. The ASX's agility and manoeuvrability puts you wherever you want to be, without compromising on cargo or cabin space.
- + Let in the sun or the city lights with the XLS' spectacular panoramic glass roof with electric retractable sunshade and LED mood lighting*.

- + Add a little bite to your style with a sleek, aerodynamic shark fin antenna.
- + Light your way and stay visible with halogen headlamps, LED Daytime Running Lamps and Automatic High Beam*.
- + Beat the rain with automatic rain sensors* that detect water on your windscreen and activate your wipers at just the right time and speed.
- + There's no twilight zone or dark tunnel vision with ASX's dusk sensing headlamps*.
- + Keeping your rear passengers UV protected with rear privacy glass.

*XLS model only. #LS ADAS and XLS models only. XLS model shown.

ASX

BUILT FOR ESCAPE

Conquer the country with ASX's power and performance. Those city manoeuvres become freeway cruises with your choice of manual or CVT 2WD models powered by a 2.0L MIVEC petrol engine or AWD variants with a 2.2L turbo diesel engine and 6 speed auto.

ZIPPY AND ECONOMICAL

ASX has a choice of engines to suit your driving style. There's the fuel efficient 2.2 litre turbo-charged diesel that uses just 6.0L per 100km* while delivering a no-compromise 110kW of power and 360Nm of torque.

Or choose the urban-friendly 2.0 litre 4 cylinder MIVEC engine for responsive city driving boasting fuel economy combined with 110kW of power and 197Nm of torque.

ONE BUTTON ALL TERRAIN

AWD ASX models feature All Wheel Control (AWC), a button that lets you select '2WD' for greater efficiency, and '4WD' for increased traction on slippery or loose roads.

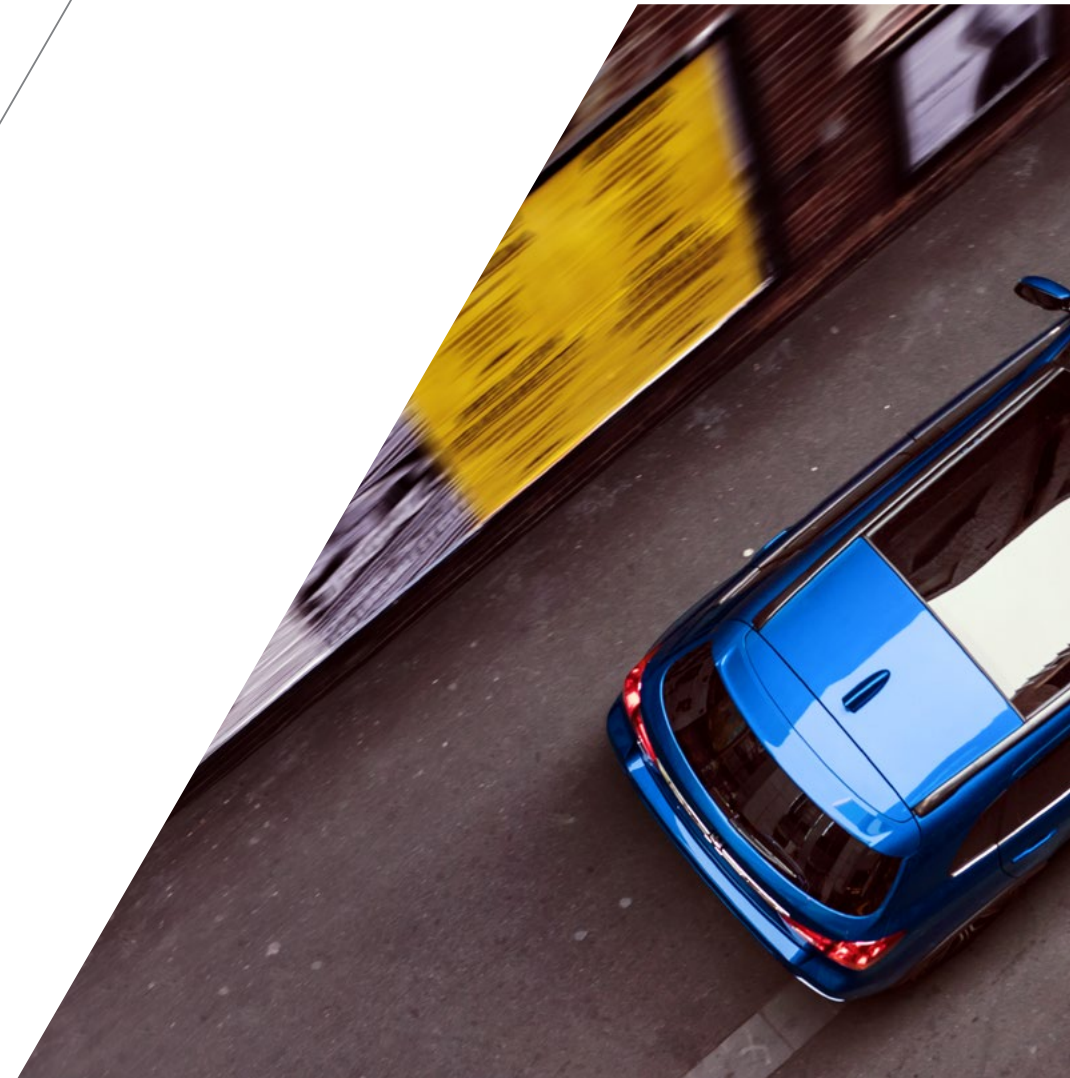
There's also a 'Lock' mode that provides positive drive to both front and rear wheels when you find yourself in unpredictable road conditions.

EFFORTLESS AND STABLE

ASX automatic petrol models are equipped with continuously variable transmission (CVT). It means the gear ratios are infinitely variable, and effortlessly attuned to operating at optimum RPM for greater power and economy, whatever your speed. For diesel models, Mitsubishi's intelligent 6 speed automatic transmission complements the powerful characteristics of the engine.

SMOOTH OPERATOR

Bumps and potholes suddenly seem less jolty thanks to the MacPherson strut front and multi-link rear suspension. In your ASX, shock absorbers and stabilisers are perfectly tuned for a sporty, comfortable ride.





XLS model shown.

ASX

BUILT FOR PEACE OF MIND

Looking after everything you hold precious is our number one priority. Mitsubishi's RISE rigid occupant cell absorbs and dissipates energy away from you in the event of a crash, and with a maximum ANCAP safety rating of 5 stars, your ASX is the angel on your shoulder keeping you out of harm's way.

5 STAR ANCAP

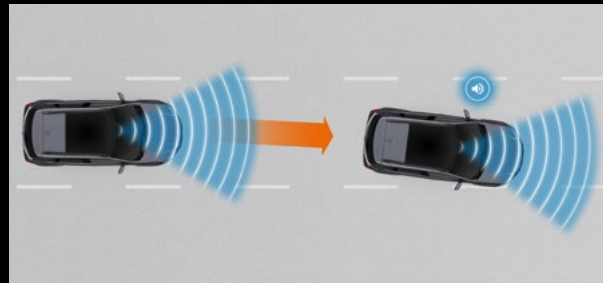
ASX has achieved the maximum ANCAP safety rating of 5 stars, so your precious cargo is protected no matter where your ASX takes you.





Forward Collision Mitigation (FCM)^{#1}

The Forward Collision Mitigation system, offers extra peace of mind. It detects obstructions ahead and issues a visual and audio alert when there is danger of collision, automatically applying the brakes to avoid collision or reduce impact.



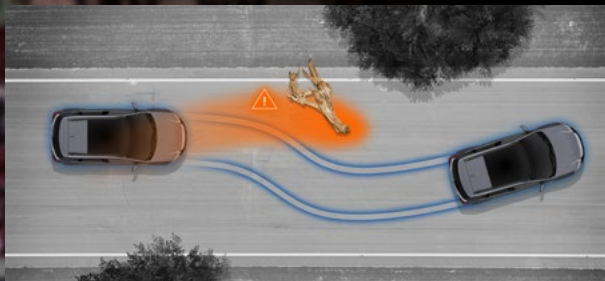
Lane Departure Warning (LDW)[#]

Lane Departure Warning uses a camera to issue an audible alert and shows a warning on the multifunction display if your vehicle drifts from its lane while the turn signals are not operating.



Reverse camera and sensors

Glide into that tight spot. Back up with confidence. ASX's rear camera view automatically appears on your dash screen as soon as you shift into reverse and reverse sensors warn you if you're getting too close to objects behind you.



Anti-lock Braking System (ABS)

Maintain steering control and manoeuvre around obstacles under heavy braking with ASX's Anti-lock Braking System.



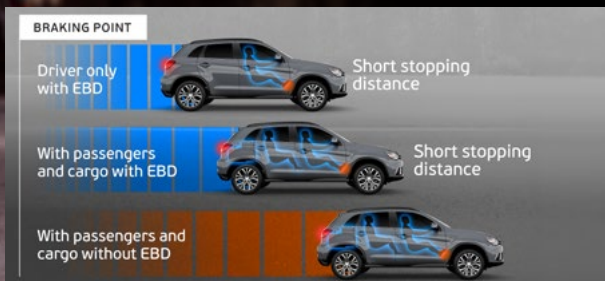
Active Stability Control (ASC)

Active Stability Control (ASC) intuitively recognizes when you over-steer or under-steer and applies brake force to appropriate wheels to keep you stable through corners.



7 SRS Airbags

Your precious cargo is protected with ASX's 7 SRS airbags including driver and front passenger, side and curtain airbags and driver knee airbag. Designed to stabilise your lower body and knees during certain types of frontal collisions, the driver knee airbag provides an extra level of protection when you need it most.



Electronic Brakeforce Distribution (EBD)

With a load in the back, it's harder to stop suddenly in a short distance. In your ASX, Electronic Brakeforce Distribution (EBD) works hand-in-hand with the ABS computer to assess load and distribute braking force between the front and rear wheels, helping to stop you faster.



Active Traction Control (ATC)

Active Traction Control (ATC) helps the ASX maintain traction on the most slippery or rugged surfaces. ATC automatically controls the engine's output – so driving wheels are prevented from spinning. Sensing loss of traction in independent wheels, ATC applies braking force to that particular wheel and sends extra power and torque to other wheels with traction, to keep the vehicle moving and in control.



Hill Start Assist (HSA)

Steep city streets or congested shopping mall ramps will no longer be a problem with ASX's Hill Start Assist (HSA) technology. It prevents the car from rolling backwards by maintaining braking force to give you time to move your foot from the brake to the accelerator.

#LS ADAS and XLS models only. Please drive safely and never rely solely on these systems while driving. 1. The detection and control capabilities of FCM are supplementary only and do not prevent collisions in every situation. Please read the operation manual carefully and be aware of these limitations.

LS 2WD



THE DETAIL THAT MAKES THE ASX SO ATTRACTIVE

LS ADAS* 2WD

*Advanced Driver Assist System



5M/T OR CVT

MECHANICAL

- 2.0L 4cyl DOHC 16 valve MIVEC engine
- 5 speed Manual Transmission or optional Continuously Variable Transmission (CVT)
- INVECS III Smart Logic – (CVT only)
- Electric power steering

EXTERIOR

- 18" alloy wheels
- Black wheel arch garnish
- Fog lamps (front)
- LED Daytime Running Lamps (DRL)
- Halogen headlamps
- Roof rails (black)
- Privacy glass
- Rear roof spoiler with high mount stop lamp
- Door mirrors with integrated turn indicator
- Chrome exhaust tip
- Shark fin antenna

INTERIOR

- Leather bound gearshift
- Leather bound piano black steering wheel
- Piano black centre panel
- Chrome interior door handles
- Chrome Accented HVAC Control Switches
- Chrome Accented Instrument Cluster
- Carpet floor covering

COMFORT

- Climate control air conditioning
- Rear air conditioning ducts (underneath front seats)
- Rear heater ducts (underneath front seats)
- Pollen filter
- Tilt & telescopic steering column
- Side and rear window demisters
- Driver foot rest
- Driver and passenger assist grips

CONVENIENCE

- Cruise control
- Central door locking with keyless entry
- Steering wheel phone control switches
- Steering wheel audio control switches
- Steering wheel cruise control switches
- Door mirrors with power fold control
- Power windows front and rear (driver auto up & down)
- Variable intermittent windscreen wipers
- Intermittent rear wiper and washer
- Accessory power socket
- Front map lamps
- Cargo area lamp
- Coat hook
- Sunvisors with illuminated mirrors
- High contrast instrument meter
- Tachometer
- Trip meter
- Remote fuel filler release
- Remote boot release
- Welcome light / coming home light

STORAGE

- Floor console with upper and lower storage
- Door pockets - front
- Cup holders and bottle holders
- Seat back pocket - passenger
- Fully trimmed cargo area
- Luggage tie-down hooks
- Glovebox- illuminated

SEATING

- Cloth seat trim

Front Seats

- Bucket seats
- Slide and recline adjustment
- Driver height adjustment
- Height adjustable headrests

Second Row Seats

- 60:40 split folding function
- Height adjustable headrests x 3

AUDIO & MEDIA

- Smartphone Link Display Audio with 7" touch screen
- Android Auto™
- Apple CarPlay
- Digital Audio Broadcast (DAB+) radio
- AM/FM radio/MP3 player
- 4 speakers
- USB Input x 2
- iPod control
- Bluetooth phone connectivity & audio streaming with voice control
- Multi information display - includes trip computer, outside temperature, average fuel consumption

SAFETY

- Reverse parking sensors
- Reverse camera
- Hill Start Assist (HSA)
- Active Stability Control (ASC)
- Active Traction Control (ATC)
- Anti-lock Braking System (ABS)
- Electronic Brakeforce Distribution (EBD)
- Emergency Brake Assist System (EBA)
- Emergency Stop Signal Function (ESS)
- Smart Brake
- Driver & front passenger SRS airbags
- Driver & front passenger side SRS airbags
- Curtain SRS airbags
- Driver knee airbag
- Reinforced Impact Safety Evolution (RISE) body
- Intrusion minimising brake pedal
- 3 point Emergency Locking Retractor (ELR) seatbelts (all seating positions)
- Auto Locking Retractor (ALR) seatbelts on outboard 2nd row seats
- Front seatbelt pretensioners and force limiters
- Front seatbelt height adjustable shoulder anchorages
- Child proof rear door locks
- Child restraint anchorage points x 3
- ISO-Fix child seat mountings x 2

SECURITY

- Anti-theft encrypted engine immobiliser
- Theft protection alarm
- Steering lock
- Auto relock function for central door locking

CVT

Features additional to LS 2WD

MECHANICAL

- Continuous Variable Transmission (CVT) only

SAFETY

- Forward Collision Mitigation (FCM)
- Lane Departure Warning (LDW)
- Automatic rain sensing wipers
- Automatic dusk sensing headlamps
- Auto High Beam (AHB)
- Electrochromatic rear view mirror

LS AWD



6AT

Features additional to LS 2WD

MECHANICAL

- 2.2L 4cyl DOHC diesel engine
- 6 speed automatic transmission
- Paddle Shift
- INVECS II Smart Logic
- All Wheel Control AWD (AWC)

XLS 2WD



CVT

Features additional to LS ADAS

INTERIOR

- Door trim leather look insert

COMFORT

- Panoramic roof with electric retractable sunshade and LED mood lighting

CONVENIENCE

- Smart Key
- One touch start system

SEATING

- Leather seat facings
- Power driver seat
- Heated front seats

AUDIO & MEDIA

- 6 speakers (includes 2 tweeters)

XLS AWD



6AT

Features additional to XLS 2WD

MECHANICAL

- 2.2L 4cyl DOHC diesel engine
- 6 speed automatic transmission
- Paddle Shift
- INVECS II Smart Logic
- All Wheel Control AWD (AWC)

KEY SPECIFICATIONS

MODEL	ASX LS 2WD 5M/T	ASX LS 2WD CVT	ASX LS ADAS 2WD CVT	ASX XLS 2WD CVT	ASX LS AWD 6A/T	ASX XLS AWD 6A/T
Drive system	2WD				AWD	
Engine	2.0L 4cyl DOHC 16 valve MIVEC engine				2.2L 4cyl DOHC diesel	
Displacement (cc)	1998				2268	
Bore x Stroke (mm)	86.0 x 86.0				86.0 x 97.6	
Maximum power (kW@rpm)	110@6000				110@3500	
Maximum torque (Nm@rpm)	197@4200				360@1500-2750	
Battery	55D23L				95D31L	
Fuel type	Regular unleaded 90 RON				Diesel	
Fuel tank capacity (L)	63				60	
Fuel consumption (ADR 81/02 per 100 km)*	7.7		7.6		6.0	
CO ² Emissions (grams per kilometre)	179		176		160	
Suspension - front/rear	MacPherson strut with coil spring and stabiliser bar/ Multi-link with stabiliser bar					
Brakes - front/rear	Ventilated discs / Rear discs					
Tyre size	225/55R18 97H					
Wheel size	18" x 7.0J Alloy wheels					
Spare wheel	Steel space saver spare wheel - T125/90D16					
Turning Circle - kerb to kerb (m)	10.6					
Capacities						
Gross vehicle mass (kg)	1970				2010	
Kerb mass (kg)	1335		1365		1540	
Gross combination mass (kg)	3270				3410	
Maximum payload (kg)	635		605		470	
Maximum front axle mass (kg)	1030				1120	
Maximum rear axle mass (kg)				1000		
Maximum towing capacity with trailer brakes (kg)	1300				1400	
Maximum towing capacity without trailer brakes (kg)				750		
Maximum towball download (kg)	130				140	
Dimensions – Cargo Area						
Length (mm)				735		
Width (mm)				1355		
Width between wheel arches (mm)				1000		
Height (mm)				750		
Capacity (L)				393		
Length with 2nd row seats folded down (mm)				1475		
Capacity with 2nd row seats folded down (L)	1193			1143	1193	1143

*Fuel consumption (ADR 81/02 litres per 100 km). Figures to be used for comparison across vehicles. Driving conditions will affect actual results.



BUILT TO MAKE IT YOURS

We may have city-sized the SUV, but our range of ASX accessories are bigger than ever. Ask your Mitsubishi dealer to show you what we've got to help you customise your ASX to your exact requirements. Mitsubishi Genuine Accessories go through an extensive program of design, development and stringent testing to ensure they meet all applicable government standards as well as Mitsubishi's own rigorous engineering specifications and performance targets. By using Mitsubishi Genuine Accessories, you get the best quality accessories that are both as durable and reliable as your sleek new ASX. If it's not genuine, don't risk it.

**MITSUBISHI
DIAMOND
ADVANTAGE**
GENUINE ACCESSORIES

**NOT GENUINE?
DON'T RISK IT.**



Nudge Bar



Headlamp Protectors



Bonnet Protector



Weathershields



Chrome Mirror Covers



Chrome Door Handle Covers



Front Mud Guards



Towbar Package



Chrome Towball



Outer Scuff Plates



Sports Rear Spoiler



Roof Racks



Thule Luggage Pod



Alloy Fuel Lid



Neoprene Seat Covers - Front



Neoprene Seat Covers - Rear



Mats - Available in Carpet or Rubber



Cargo Liner - Hard Plastic



Cargo Area Protector - Full Cover



Cargo Barrier



Sports Gearshift Knob



Full Size Spare Wheel & Accommodation Kit



Alloy Wheel Lock Nut Set

Pictures shown for illustration purpose and may not be product specific. Please check with your Mitsubishi dealer for specific model applications.

COLOUR



White



Starlight (P)



Red (M)



Black (P)



Lightning Blue (P)



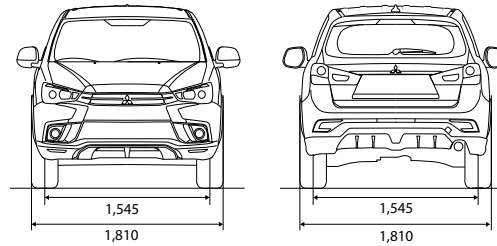
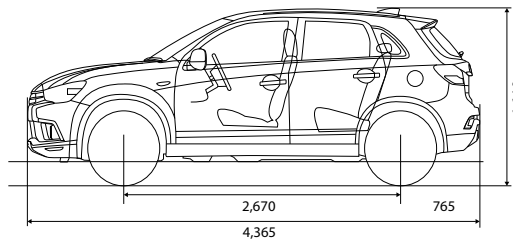
Sterling Silver (M)



Titanium (M)

(M) Metallic
(P) Pearlescent
Optional extras

EXTERIOR DIMENSIONS (MM)



Ground Clearance Petrol – 205mm / Diesel – 180mm

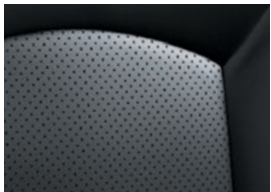


Book a
test drive

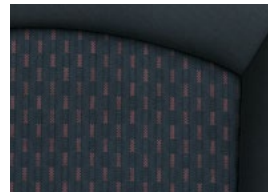


Build
& Price

UPHOLSTERY



XLS – Black Leather seat
facings



LS – Black Cloth

**MITSUBISHI
DIAMOND
ADVANTAGE**

All Mitsubishi Motors vehicles come with the Mitsubishi Diamond Advantage[^] – Warranty, Capped Priced Servicing and Roadside Assistance so that no matter where the road takes you, we will be there with you. Ask your Dealer or visit mitsubishi-motors.com.au to find out more.

[^]Conditions apply. Excludes Government, Rental and National Fleet customers. See mitsubishi-motors.com.au for further information. Always consult your authorised Mitsubishi Dealer for the latest details on specifications, options, prices, availability and conditions on New Vehicle warranty. All product illustrations and specifications referred to herein are believed to be correct at the time of publication approval. Subject to any applicable Federal, State or Territory Laws or ordinances, which may apply from time to time, Mitsubishi Motors Australia Limited reserves the right, without notice, or obligation, to discontinue or make changes to designs, specifications, colours and materials of the options and products referred to herein at any time without incurring any liability to any purchaser thereof. © Mitsubishi Motors Australia Limited. ABN 53 007 870 395 ASX0917 18MY MMA0291