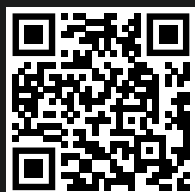


All-new

**SORENTO**

MODEL YEAR 2021



Scan here to view & download  
the in-depth Digital Brochure

All-new

# SORENTO

A large SUV that puts the focus firmly on family and luxury. The All-New Kia Sorento is more spacious, more versatile with class-leading innovations wrapped in finely tailored style. It's not only the most high-tech Kia car ever made, but also leads the way in SUV design.

## *"refined boldness"*

We wanted to make the new Sorento look strong and firm at the front, but slender and sleek from the side. The side character line did all the magic. Traditional SUVs have a strong-looking, box-like back for its horizontal character lines. The character line of Sorento, however, looks arch-like, just like that of sedans. This makes the overall look sleek, despite the angles all over the body. The concept of refined boldness inspired our designers, who sought to maintain the robust, tough-looking aesthetic of earlier generations of Sorento, while applying a greater degree of refinement and elegance and a sense of sportiness.





All-new  
**SORENTO**  
SPECIFICATION SHEET







**1-** A segment first, the Remote Smart Parking Assist<sup>17</sup> lets the user start the vehicle remotely with the key fob, allowing the driver to control forward and backward movement of the Sorento. Perfect for getting in or out of a tight parking space or garage.

**2-** Rear Cross Traffic Collision Avoidance Assist (RCCA)<sup>7</sup> – helps reduce the risk of collision by monitoring the traffic behind you. The system will warn you of a potential incident, and apply the brakes for you if a collision is about to occur.



**3-** Multi Collision Braking (MCB)<sup>7</sup> –

The system engages braking when the airbag is deployed during a primary collision to mitigate a secondary collision. A driver cannot always react fast enough themselves, which is why the MCB system is so important in an emergency situation.

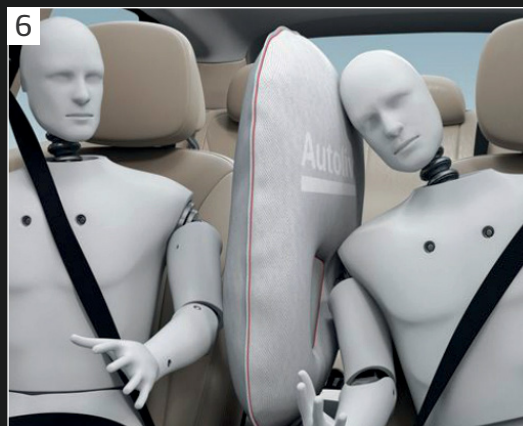


**4-** Transport your passengers safely with class leading safety tech. The Blind Spot View Monitor<sup>7</sup> activates as you turn your indicator on ready to change lanes, acting as another pair of eyes on the road to safely merge, showing a live camera feed on your dash gauge cluster in HD clarity.




**5-** Designed to monitor and detect vehicles or vulnerable road users travelling ahead of you, the Autonomous Emergency Braking system automatically applies the brakes if it determines a crash<sup>7</sup> is imminent, helping to avoid a frontal collision. The Junction Assist function will help avoid a collision with an oncoming vehicle in an adjacent lane when turning right at an intersection.

**6-** Centre Collision Airbag – A segment first, the front centre side airbag is built into the left side of the driver's seat and deploys during a side impact to minimise the chance of head clash between the two front seat occupants.



# SORENTO MY21 – MECHANICAL & FEATURE LIST

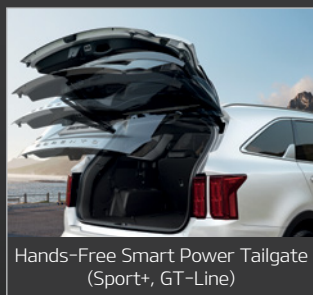
Engine	3.5L Petrol		2.2L Diesel	
Engine type	SmartStream V6 DOHC MPI <sup>1</sup> D-CVVT <sup>2</sup>		SmartStream In-line 4 cyl. E-VGT <sup>3</sup> CRDi <sup>4</sup> 16 valve	
Max. power (kW @ rpm)	200 @ 6,300		148 @ 3,800	
Max. torque (Nm @ rpm)	332 @ 5,000		440 @ 1,750–2,750	
Transmission				
8 speed automatic (Sports-matic) with 2WD (Front Wheel Drive)	●		–	
8 speed Dual Clutch Transmission (Wet-type) with Active AWD (Part-time with lock mode)	–		●	
Dimensions				
Overall length / width / height with roofrails (mm)	4,810 / 1,900 / 1,700			
Wheelbase / minimum ground clearance (mm)	2,815 / 176			
Luggage space 2/5/7 seats up (L, VDA)	2,011 / 616 / 187			
Fuel				
Fuel consumption (L/100km) – Combined / Urban / Extra-urban <sup>5</sup>	9.7 / 13.7 / 7.5		6.1 / 7.4 / 5.3	
CO2 emission (g/km) – Combined / Urban / Extra-urban	222		159 / 193 / 140	
Fuel type recommended <sup>6</sup>	Regular unleaded		Diesel	
Fuel tank capacity (L)	67			
Wheels & Tyres	S	Sport	Sport+	 Lane
Wheel type / size	Alloy 17"	Alloy 18" (Machine Finish)	Alloy 19" (Machine Finish)	Alloy 20" (Dark Chrome Finish)
Tyres	235/65 R17 Continental	235/60 R18 Continental	235/55 R19 Continental	255/45 R20 Continental
Spare wheel type	Full Size Alloy			
Active Safety <sup>7</sup>				
ABS (Anti-lock Braking System) with EBD <sup>8</sup> & BA <sup>9</sup>	●	●	●	●
ESC (Electronic Stability Control) with TCS <sup>10</sup>	●	●	●	●
MCB (Multi Collision Braking)	●	●	●	●
Front & reverse parking sensors with dash display	●	●	●	●
Rear view camera with in-audio screen display & dynamic parking guidelines	●	●	●	●
BCA (Blind Spot Collision Avoidance Assist)	●	●	●	●
Blind Spot View Monitor	–	–	–	●
RCCA (Rear Cross Traffic Collision Avoidance Assist)	●	●	●	●
LKA (Lane Keeping Assist) with LFA (Lane Following Assist)	●	●	●	●
AEB (Autonomous Emergency Brake) – Car, Pedestrian, Cyclist & Junction	●	●	●	●
PCA (Parking Collision Avoidance Assist)	–	–	–	●
360° camera view	–	–	–	●
SEA (Safe Exit Assist)	●	●	●	●
Child restraint anchorage points (5 x Top tether / 4 x ISOFIX)	●	●	●	●
Exterior Features				
Roof rails	●	●	●	●
Hands-free smart power tailgate	–	–	●	●
Panoramic sunroof (powered)	–	–	–	●
Privacy glass (rear windows & tailgate)	–	–	●	●
Interior Features				
Embossed cloth seats	●	●	–	–
Leather appointed <sup>11</sup> seats (with heated 1st row)	–	–	●	–
Quilted Nappa Leather appointed <sup>11</sup> seats (with heated & ventilated 1st row)	–	–	–	●
6-way driver's seat incl. height adjust (pumping device)	●	–	–	–
10-way power driver's seat (including 2-way lumbar support)	–	●	●	–
14-way power driver's seat (including 4-way lumbar support and cushion extension)	–	–	–	●
IMS <sup>12</sup> (Integrated Memory System) driver's seat with 2 seating position memory	–	–	–	●
Smart one touch flat folding 2nd row seats (60:40)	●	●	●	●
Split fold flat 3rd row seats (50:50)	●	●	●	●
ASCC (Advanced Smart Cruise Control) with steering wheel mounted controls	●	●	●	●
Heated steering wheel	–	–	●	●
4.2" colour TFT Supervision instrument cluster	●	●	●	–
12.3" colour TFT LCD Supervision cluster	–	–	–	●
Interior Mood Lighting	–	–	–	●
2 x 12 volt power outlets (1 x behind centre console & 1 x cargo area)	●	●	●	●
1st row USB chargers (3 x front console)	●	●	●	●
2nd row USB chargers (2 x behind 1st row seats & 1 x behind centre console)	–	–	●	●
3rd row USB chargers (2 x cargo area)	–	–	●	●
Wireless phone fast charging (Qi) <sup>13</sup>	–	–	–	●
8 x cup holders (2 x front, 4 x 2nd row & 2 x 3rd row)	●	●	●	●
MP3 compatible audio player with AM/FM tuner and DAB Digital Radio	●	●	●	●
6 speaker audio system (front door, rear door & front tweeters)	●	●	●	–
12 speaker BOSE® premium sound system	–	–	–	●
8" colour LCD touch screen	●	–	–	–
10.25" colour LCD touch screen with Sat Nav & 10 yrs traffic info and map updates	–	●	●	●
Driver Talk in-car intercom	–	–	–	●
Apple CarPlay™ <sup>14</sup> & Android Auto™ <sup>14</sup> with voice recognition	●	●	●	●
USB input with iPod® compatibility and Bluetooth® Multi-connection functionality (phone/media stream) <sup>15</sup>	●	●	●	●
Dual-zone climate control air-conditioning (3-stage)	–	●	●	●
2nd row vents (behind centre console)	●	●	●	●
3rd row fan control & vents	–	●	●	●

For full specifications list visit [www.kia.com/au/cars/sorento/features.html](http://www.kia.com/au/cars/sorento/features.html)

● Standard – Not available



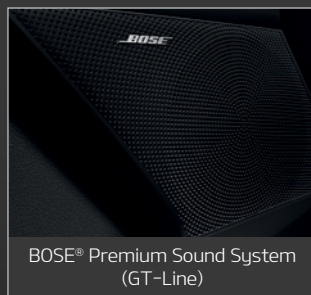
## FEATURES



Hands-Free Smart Power Tailgate  
(Sport+, GT-Line)



Bluetooth® Multi-Connect  
Functionality¹⁵



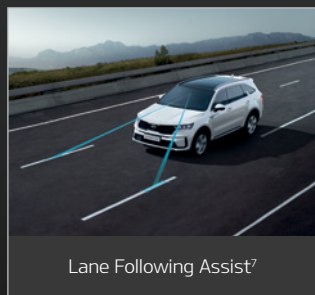
BOSE® Premium Sound System  
(GT-Line)



Interior Mood Lighting  
(GT-Line)



Panoramic Sunroof  
(GT-Line)



Lane Following Assist⁷

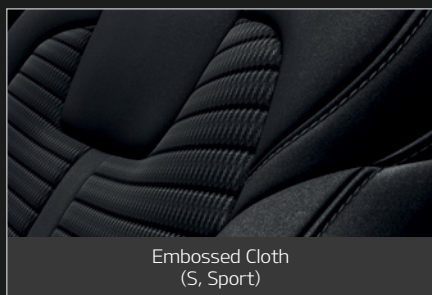


360° Camera View  
(GT-Line)



12.3" Colour TFT LCD Supervision  
Cluster (GT-Line)

## INTERIOR COLOURS



Embossed Cloth  
(S, Sport)

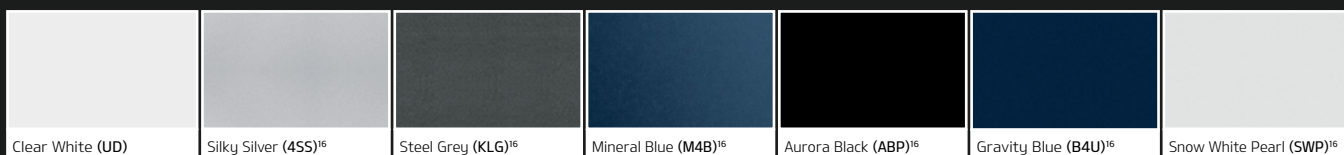


Leather Appointed¹¹  
(Sport+)



Quilted Nappa Leather Appointed¹¹  
(GT-Line)

## EXTERIOR COLOURS



## WHEELS



17" Alloy  
(Si)



18" Alloy (Machine Finish)  
(Sport)



19" Alloy (Machine Finish)  
(Sport+)



20" Alloy (Dark Chrome Finish)  
(GT-Line)

For full terms and conditions, visit [www.kia.com/au](http://www.kia.com/au) Kia Motors Australia ABN 97 110 483 353 Locked Bag 2207, North Ryde BC NSW 1670. Specifications apply to 2021 model year Sorento. Kia Motors Australia reserves the right to discontinue or change the models, features, specifications, options and prices of products referred to in this sheet without incurring any liability whatsoever to any purchaser or prospective purchaser of any such products. Some of the items herein are optional at additional cost. Consult your Kia dealer for the latest information on models, specifications, features, prices, options and availability. ¹MPI - Multi-Point Injection. ²D-CVVT - Dual Continuous Variable Valve Timing. ³E-VGT - Electronic-Variable Geometry Turbocharger. ⁴CRDi - Common-Rail Direct Injection. ⁵ADR81/02. ⁶E10 Compatible. ⁷Safety technologies are supplemental systems and do not replace the need for the driver to exercise care and attention. ⁸EBD - Electronic Brake Distribution. ⁹BA - Brake Assist. ¹⁰TCS - Traction Control System. ¹¹Leather appointed seats may comprise of genuine leather, polyurethane and other man-made materials or a combination thereof. ¹²IMS - Integrated Memory System. ¹³Wireless charging compatible with phones featuring Qi technology or adapter. ¹⁴Apple CarPlay™ is a registered trademark of Apple Inc. Apple CarPlay™ connectivity requires compatible iOS device. See [apple.com/au](http://apple.com/au) for more details. Android Auto™ is a registered trademark of Google Inc. Android Auto™ connectivity requires compatible Android device. See [android.com/intl/en\\_au/](http://android.com/intl/en_au/) for more details. ¹⁵Not all mobile phones will be compatible with the vehicle's Bluetooth® and multimedia system. ¹⁶Premium paint at additional cost. BOSE® is a registered trademark of Bose Corporation. ¹⁷The Road Traffic Code 2000 in WA prohibits people from driving a vehicle unless a person is behind the steering wheel and they have full control over the vehicle. The use of this Remote Smart Park Assist (RSPA) feature will not comply with this rule and thus it should not be used while within WA. For full terms and conditions on Kia's 7 Year warranty, visit [kia.com/au](http://kia.com/au)



**Kia Motors Australia Pty Ltd** ABN 97 110 483 353  
Locked Bag 2207, North Ryde BC NSW 1670  
Phone 131 KIA (131 542)  
[kia.com/au](http://kia.com/au)



Kia. Driving Australian Sport.