

# MAZDA CX-9

ZOOM-ZOOM





# CONTENTS

---

03 - Introduction	11 - Safety
04 - Exterior Design	12 - Sport
05 - Interior Design	13 - Touring
06 - Interior Space	14 - GT
07 - Trims and Craftsmanship	15 - Azami
08 - Colours	16 - Specifications
09 - Performance	25 - Mazda Care
10 - Connectivity	26 - Contact







LUXURY FOR YOUR WORLD, AND THEIRS



Mazda CX-9 delivers an exceptional experience for everyone on board with superb design evident everywhere you turn. The spacious interior is finished with quality craftsmanship which is matched by outstanding safety and the latest in driving technology. A range of new and updated features means Mazda CX-9 is a finely crafted luxury and family SUV in one.

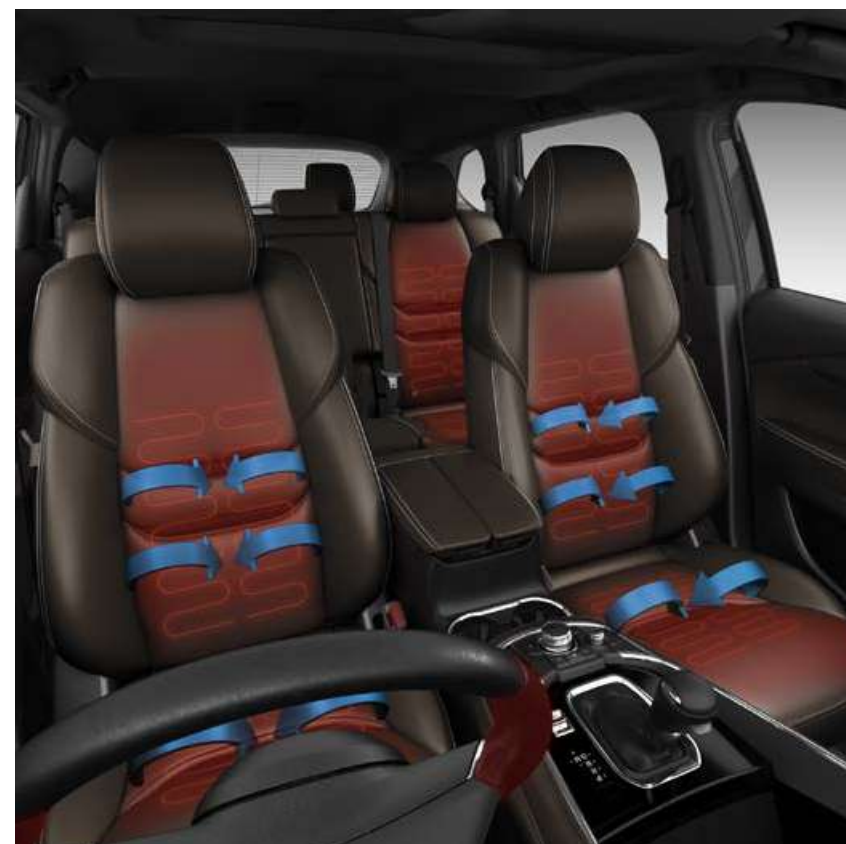


The elegant styling of Mazda CX-9 redefines the seven-seat family SUV. Featuring stunning 'Kodo – Soul of Motion' design, the exterior lines command a striking street presence and look stunning from every angle. New 20" alloys, front grille and sleek headlamps add even more boldness.

## DESIGN, REDEFINED







## REFINEMENT AT EVERY TURN

Mazda CX-9 is a striking example of unprecedented comfort, technology and spaciousness. Every element of the cabin features exceptional design and superb craftsmanship. To add even more luxury the front row enjoys heated and ventilated seats, the outer second row seats also have a heating function while the driver will love the heated steering wheel in the colder months.





Azami in Machine Grey Metallic.



Azami with Pure White nappa leather.



Touring model.

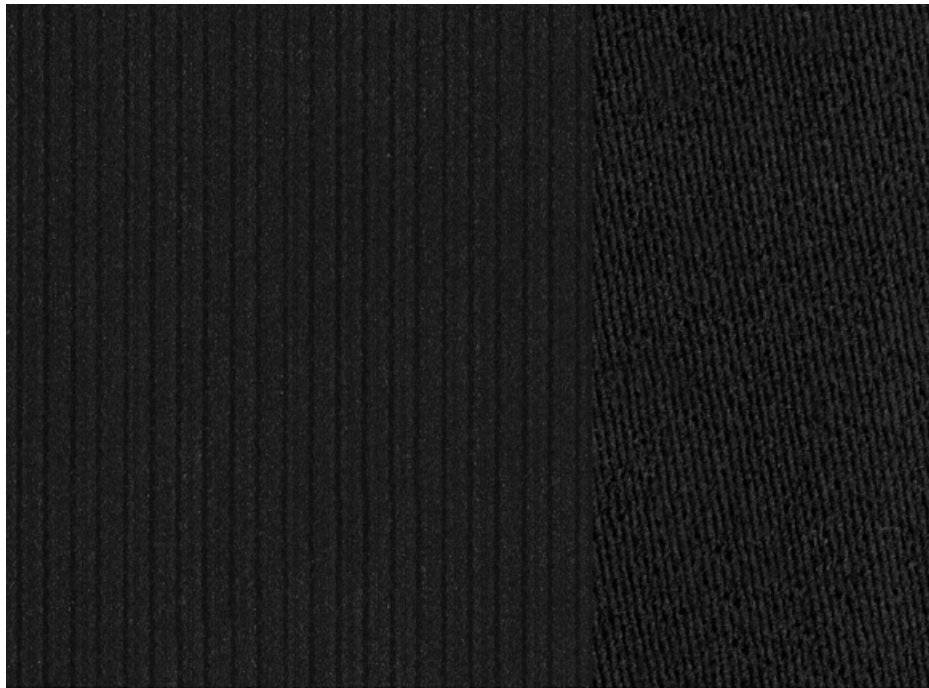
## THE ULTIMATE IN SPACE AND FUNCTION

Mazda CX-9 effortlessly accommodates the daily demands of the modern family with a versatile cabin that adapts to all seating and luggage requirements. The third-row is accessed using a simple, one touch walk-in switch, while added storage space is integrated throughout the cabin, as are USB ports. The rear power tailgate adds even more convenience.

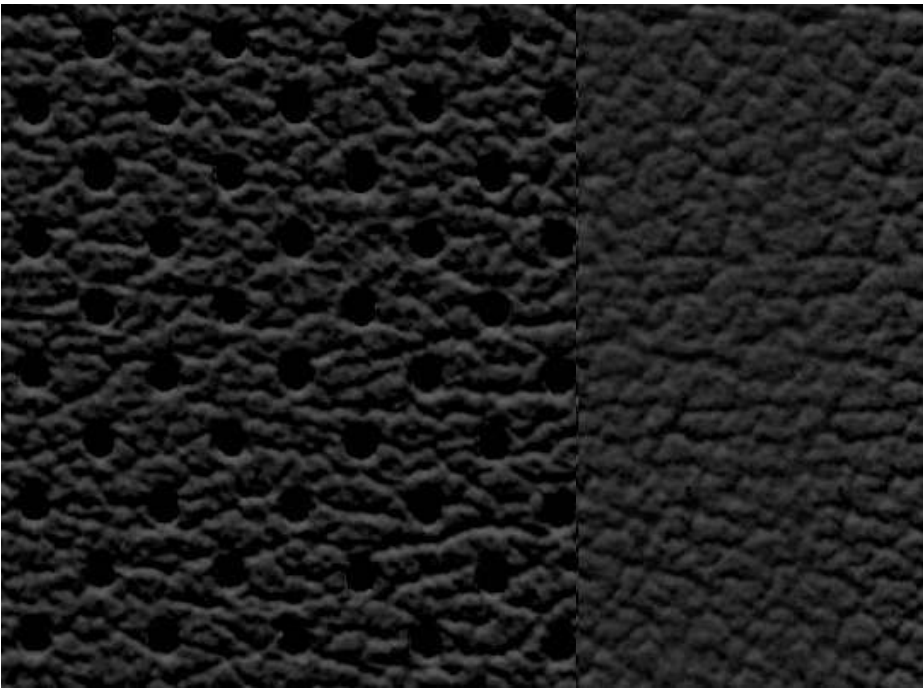


# INTERIOR TRIMS AND CRAFTSMANSHIP

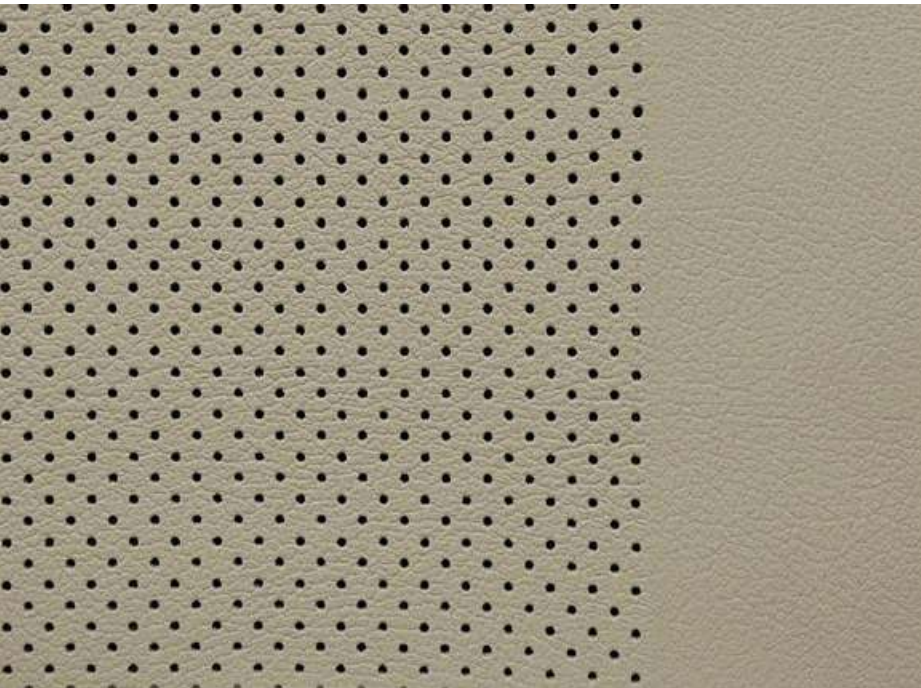
You have a choice of trims in Mazda CX-9, all perfectly complementing the high quality craftsmanship and premium finishes, including wooden accents throughout.



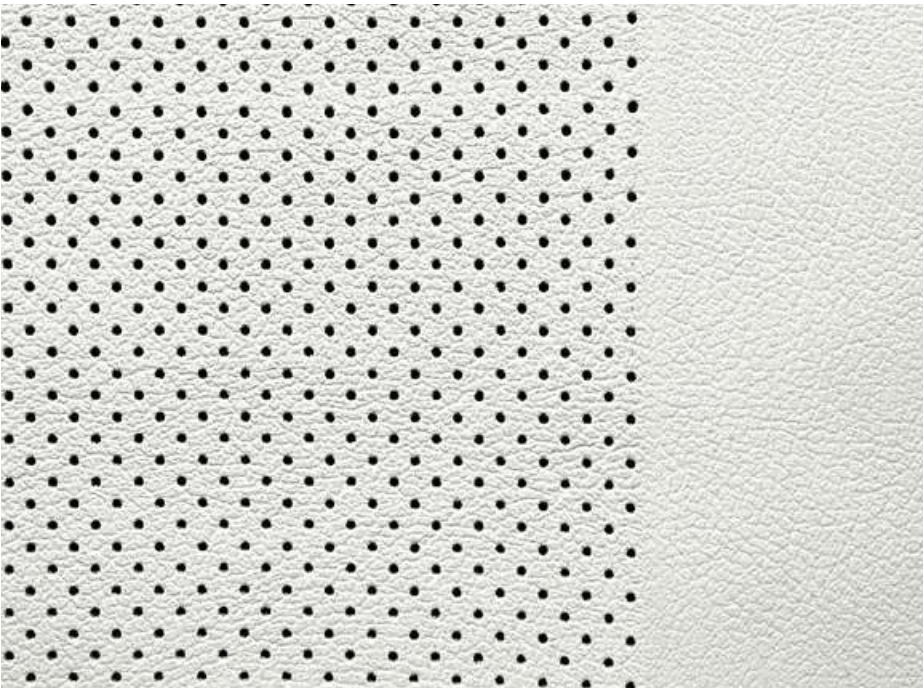
Black cloth (Sport)



Black leather (Touring, GT)



Natural Stone leather (GT) ●



Pure White nappa leather (Azami) ●



Walnut Brown nappa leather (Azami)

● Natural Stone leather and Pure White nappa leather interior only available with Soul Red Crystal Metallic, Machine Grey Metallic, Titanium Flash Mica, Deep Crystal Blue Mica and Jet Black Mica exterior colours.

# Leather interior includes some Maztex material on selected high-impact surfaces.





Snowflake White Pearl Mica



Sonic Silver Metallic



Soul Red Crystal Metallic<sup>^</sup>●



Machine Grey Metallic<sup>^</sup>●

STUNNING IN EVERY COLOUR

Take your pick from the range of colours – all beautifully matched to the bold exterior lines of Mazda CX-9.



Titanium Flash Mica ●



Deep Crystal Blue Mica ●



Jet Black Mica ●

● Natural Stone leather and Pure White nappa leather interior only available with Soul Red Crystal Metallic, Machine Grey Metallic, Titanium Flash Mica, Deep Crystal Blue Mica and Jet Black Mica exterior colours.

<sup>^</sup> At extra cost.





## BREAKTHROUGH FAMILY SUV PERFORMANCE

Mazda CX-9 features the breakthrough Skyactiv-G 2.5T petrol engine. This 2.5-litre direct injection turbocharged engine delivers an athletic driving performance with real-world efficiency that's previously unheard of in a family SUV.



## COMPATIBLE CONNECTIVITY

Mazda CX-9 is fully-equipped to handle the entertainment demands of modern families. Four USB ports are distributed throughout the cabin. Up front, Apple CarPlay® and Android® Auto<sup>§</sup> standard on every grade, allow you to access your compatible smartphone via the stunning 9" touch screen on Touring grade and above.



<sup>§</sup> Please check the compatibility of your Bluetooth® device (particularly your mobile phone) with the specific Mazda vehicle you intend to purchase as not all devices operate correctly. Visit [www.mazda.com.au/Bluetooth](http://www.mazda.com.au/Bluetooth) or consult your Mazda Dealer for further information. Apple Car Play® is a trademark of Apple Inc., registered in the U.S. and other countries.



## ADVANCED SAFETY LOOKS OUT FOR YOU

Your family's safety is always a priority. Mazda CX-9 comes equipped with a suite of i-Activsense advanced safety technologies as standard, assisting the driver to avoid potential hazards†. Along with preventative features, crash-severity-reduction technology is activated in the event of unavoidable impact.



† Driver assist technology only and should not be used in place of skilled and safe driving practices. It is the driver's sole responsibility to monitor vehicle surroundings and conditions and comply with all applicable laws at all times.





## MAZDA CX-9 SPORT – STANDARD ACROSS EVERY GRADE

- » 18 inch alloy wheels with 255/60 tyres
- » Headlamps (LED) with auto on/off function
- » Wipers (front) 2-speed with rain sensing function
- » Power mirrors (body coloured with heating and auto-folding function)
- » Active driving display
- » Air-conditioning (three-zone climate control) with independent rear control
- » Rear-view mirror with auto-dimming function
- » Seat trim: Black cloth
- » 7-inch touch screen display (MZD Connect)
- » Audio system with: AM/FM tuner, Bluetooth® capability, Digital radio (DAB+) and 6 speakers<sup>§</sup>
- » Apple Carplay® and Android® Auto<sup>§</sup>
- » Advanced keyless push button engine start
- » Blind Spot Monitoring (BSM)<sup>†</sup>
- » Driver Attention Alert (DAA)<sup>†</sup>
- » High Beam Control (HBC)<sup>†</sup>
- » Lane Departure Warning (LDW)<sup>†</sup>
- » Lane-keep Assist System (LAS)<sup>†</sup>
- » Mazda Radar Cruise Control (MRCC) with Stop & Go function<sup>^</sup>
- » Multi-function commandor control
- » Parking sensors (Rear)<sup>†</sup>
- » Rear Cross Traffic Alert (RCTA)<sup>†</sup>
- » Reverse camera
- » Satellite navigation
- » Smart Brake Support (SBS)<sup>†</sup>
- » Smart City Brake Support [Forward/Reverse] (SCBSF/R)<sup>†</sup> with night time pedestrian detection
- » Traffic Sign Recognition (TSR)<sup>†</sup>
- » Tyre Pressure Monitoring System (TPMS)<sup>†</sup>
- » Electric parking brake with Auto Hold
- » GVC Plus
- » Off road traction assist (only on AWD)

## POWERTRAIN

- » 2.5 litre in-line 4 cylinder 16 valve DOHC S-VT turbo petrol engine with i-stop and i-ELOOP
- » Drivetrain: FWD or i-Activ AWD
- » Fuel consumption (combined): 8.4L/100km\* (FWD) or 9.0L/100km\* (AWD)
- » Maximum power: 170kW @ 5,000rpm
- » Maximum torque: 420Nm @ 2,000rpm
- » Transmission: 6-speed auto (Skyactiv-Drive)
- » G-Vectoring Control Plus (GVC Plus)

<sup>§</sup> Please check the compatibility of your Bluetooth® device (particularly your mobile phone) with the specific Mazda vehicle you intend to purchase as not all devices operate correctly. Visit [www.mazda.com.au/Bluetooth](http://www.mazda.com.au/Bluetooth) or consult your Mazda Dealer for further information. Apple Car Play® is a trademark of Apple Inc., registered in the U.S. and other countries. <sup>†</sup> Driver assist technology only and should not be used in place of skilled and safe driving practices. It is the driver's sole responsibility to monitor vehicle surroundings and conditions and comply with all applicable laws at all times. \*Fuel consumption figures are based on ADR 81/02 test results. They are useful in comparing the fuel consumption of different vehicles. They may not be the fuel consumption achieved in practice. This will depend on traffic and road conditions and how the vehicle is driven.



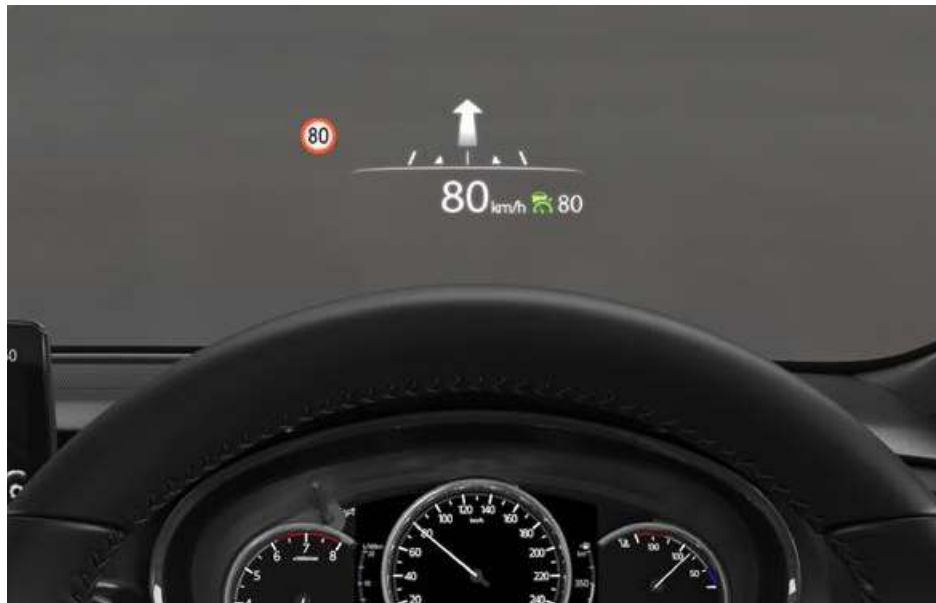


## MAZDA CX-9 TOURING FEATURES – ADDITIONAL TO SPORT

- » LED fog lamps
- » Seat trim: Black leather<sup>#</sup>
- » Front seats with: 6-way power adjustment (passenger), 8-way power adjustment (driver) and heating function
- » Rear seats with: Centre armrest storage and USB input ports (2nd row)
- » 9-inch touch screen display (MZD Connect)
- » Advanced keyless entry
- » Parking sensors (front)
- » One touch walk-in switch (2nd row seat)

## POWERTRAIN

- » 2.5 litre in-line 4 cylinder 16 valve DOHC S-VT turbo petrol engine with i-stop and i-ELOOP
- » Drivetrain: FWD or i-Activ AWD
- » Fuel consumption (combined): 8.4L/100km\* (FWD) or 9.0L/100km\* (AWD)
- » Maximum power: 170kW @ 5,000rpm
- » Maximum torque: 420Nm @ 2,000rpm
- » Transmission: 6-speed auto (Skyactiv-Drive)
- » G-Vectoring Control Plus (GVC Plus)



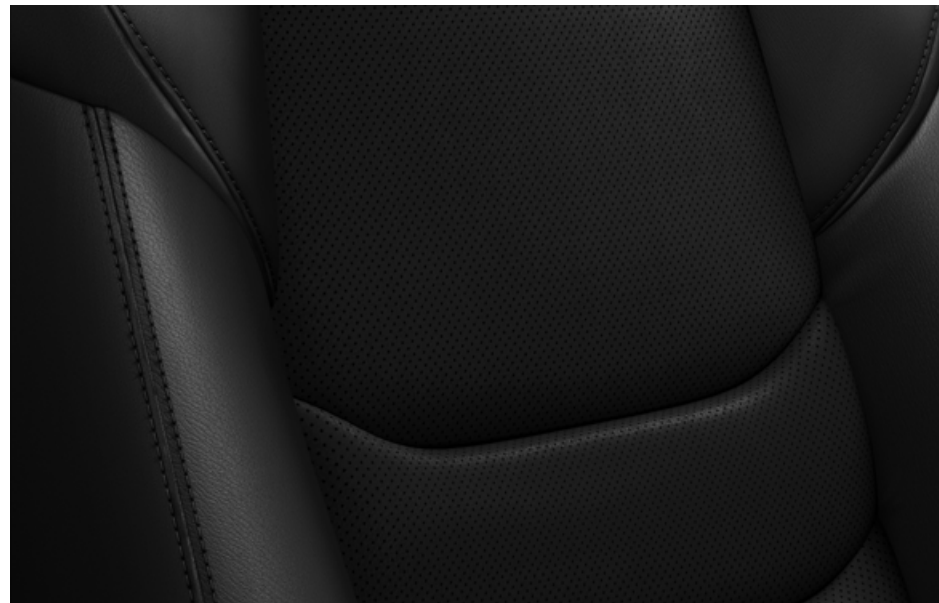
### HEADS UP

With Active Driving Display, key information is projected in full-colour onto your windscreen directly in your line of sight. Includes Traffic Sign Recognition to keep you on track.



### ONE TOUCH

Getting in and out of the third row is now easier than ever, thanks to the one touch walk-in switch.



### BACK IN BLACK

From back to front, everyone can enjoy the feeling of luxurious black leather<sup>#</sup> seats.

\*Fuel consumption figures are based on ADR 81/02 test results. They are useful in comparing the fuel consumption of different vehicles. They may not be the fuel consumption achieved in practice. This will depend on traffic and road conditions and how the vehicle is driven. <sup>#</sup>Leather interior includes some Maztex material on selected high impact surfaces.





## MAZDA CX-9 GT FEATURES – ADDITIONAL TO TOURING

- » 20-inch alloy wheels with 255/50 tyres
- » Remote-operated power tailgate (open/close) with hands free function
- » Power sliding and tilt-glass sunroof
- » Seat trim: Black or Natural Stone leather<sup>#</sup>
- » Front seats with 2-position memory function (driver), and 10-way power adjustment (driver)
- » Rear seats with: Heating function (2nd row outer) and USB charging ports (3rd row)
- » Premium Bose® 294-watt amplifier and 12 speakers (including subwoofer)
- » Glove box lid chrome knob

## POWERTRAIN

- » 2.5 litre in-line 4 cylinder 16 valve DOHC S-VT turbo petrol engine with i-stop and i-ELOOP
- » Fuel consumption (combined): 8.4L/100km\* (FWD) or 9.0L/100km\* (AWD)
- » Maximum torque: 420Nm @ 2,000rpm
- » Drivetrain: FWD or i-Activ AWD
- » Maximum power: 170kW @ 5,000rpm
- » Transmission: 6-speed auto (Skyactiv-Drive)
- » G-Vectoring Control Plus (GVC Plus)



### SOUNDS AMAZING

The 10-speaker Bose® audio system has been strategically placed around the spacious cabin to ensure you enjoy studio quality audio from any seat.



### HANDS-FREE TAILGATE

Now you can open your boot even when your hands are full, by simply swiping your foot under the tailgate.



### LET THERE BE LIGHT

Light up the stunning interior and let fresh air in too with the retractable glass sunroof.

\*Fuel consumption figures are based on ADR 81/02 test results. They are useful in comparing the fuel consumption of different vehicles. They may not be the fuel consumption achieved in practice. This will depend on traffic and road conditions and how the vehicle is driven. <sup>#</sup>Leather interior includes some Maztex material on selected high impact surfaces.





## MAZDA CX-9 AZAMI FEATURES – ADDITIONAL TO GT

- » Adaptive LED Headlamps (ALH)
- » Windscreen de-icer
- » 7-inch TFT LCD multi-information meter display
- » Heated steering wheel
- » Frameless rear-view mirror
- » Front seats with: ventilation function
- » 360° View Monitor†
- » Real wood decoration panels
- » Centre console ambient lighting (LED)
- » Hand-crafted box stitch steering wheel
- » Seat trim: Walnut Brown or Pure White nappa leather#
- » Unique overhead console

## POWERTRAIN

- » 2.5 litre in-line 4 cylinder 16 valve DOHC S-VT turbo petrol engine with i-stop and i-ELOOP
- » Drivetrain: FWD or i-Activ AWD
- » Fuel consumption (combined): 8.4L/100km\* (FWD) or 9.0L/100km\* (AWD)
- » Maximum power: 170kW @ 5,000rpm
- » Maximum torque: 420Nm @ 2,000rpm
- » Transmission: 6-speed auto (Skyactiv-Drive)
- » G-Vectoring Control Plus (GVC Plus)



### FEEL THE WARMTH

Wrap your hands around the heated steering wheel and feel a level of luxury you'll never be able to live without.



### QUALITY FINISHES

From the real wood decoration panels to the hand-crafted box stitch steering wheel, quality is everywhere you look.



### RIDE IN COMFORT

The front ventilated seats ensure every drive is a comfortable one by drawing warm air away from the driver and front passenger.

\*Fuel consumption figures are based on ADR 81/02 test results. They are useful in comparing the fuel consumption of different vehicles. They may not be the fuel consumption achieved in practice. This will depend on traffic and road conditions and how the vehicle is driven. #Leather interior includes some Maztex material on selected high impact surfaces.



SPECIFICATIONS

Powertrain		2.5L Turbo I4 Petrol FWD		2.5L Turbo I4 Petrol AWD	
Bore and stroke (mm)		89.0 x 100.0			
Compression ratio		10.5: 1			
Drivetrain		i-Activ FWD		i-Activ AWD	
Emissions standard		Euro stage V			
Engine capacity (cc)		2,488			
Engine type		2.5 litre in-line 4 cylinder 16 valve DOHC S-VT turbo petrol (Skyactiv-G) engine			
Fuel consumption (l/100km)*:	Auto (combined)	8.4		9.0	
	Auto (extra urban)	6.9		7.5	
	Auto (urban)	11.0		11.7	
Fuel system		Electronic direct injection			
Fuel tank capacity (litres)		72		74	
Gear ratio – Auto:	1st		3.487		
	2nd		1.992		
	3rd		1.449		
	4th		1.000		
	5th		0.707		
	6th		0.600		
	Reverse		3.990		
	Final drive		4.411		
Maximum power (kW @ rpm)		170 @ 5,000			
Maximum torque (Nm @ rpm)		420 @ 2,000			
Recommended fuel		Unleaded (91RON or higher) or E10			
Throttle control		Electronic (drive-by-wire)			
Transmission:	Auto	6-speed Skyactiv-Drive			

\* Fuel consumption figures are based on ADR 81/02 test results. They are useful in comparing the fuel consumption of different vehicles. They may not be the fuel consumption achieved in practice. This will depend on traffic and road conditions and how the vehicle is driven.



SPECIFICATIONS

Model Availability		Sport	Touring	GT	Azami
7-seat SUV:	2.5L Turbo I4 Petrol FWD / 6-speed automatic	●	●	●	●
	2.5L Turbo I4 Petrol AWD / 6-speed automatic	●	●	●	●
Seats		Sport	Touring	GT	Azami
Front seats with:	2-position memory function (driver)	—	—	●	●
	6-way power adjustment (passenger)	—	●	●	●
	8-way power adjustment (driver)	—	●	—	—
	10-way power adjustment (driver)	—	—	●	●
	Adjustable head restraints	●	●	●	●
	Heating function	—	●	●	●
	Height adjustment	●	●	●	●
	Lumbar support adjustment (driver)	—	—	●	●
	Rake and slide adjustment	●	●	●	●
	Seat back pockets	●	●	●	●
	Ventilation function	—	—	—	●
Rear seats with:	60/40 split fold backrest (2nd row)	●	●	●	●
	50/50 split fold backrest (3rd row)	●	●	●	●
	Adjustable head restraints	●	●	●	●
	Centre fold down armrest (2nd row)	●	—	—	—
	Centre fold down armrest with USB and storage (2nd row)	—	●	●	●
	Heating function (2nd row, outer)	—	—	●	●
	Rake and slide adjustment (2nd row)	●	●	●	●
Seat trim:	Black cloth	●	—	—	—
	Black leather <sup>#</sup>	—	●	●	—
	Natural Stone leather <sup>#</sup>	—	—	○	—
	Walnut Brown nappa leather <sup>#</sup>	—	—	—	●
	Pure White nappa leather <sup>#</sup>	—	—	—	○

● = Standard, ○ = Option, — = Not available.

<sup>#</sup> Leather interior includes some Maztex material on selected high impact surfaces.



SPECIFICATIONS

Chassis and Powertrain Technologies	Sport	Touring	GT	Azami
Automatic transmission drive selection	●	●	●	●
Automatic transmission kickdown switch	●	●	●	●
Dynamic Pressure Turbo system	●	●	●	●
Electric Parking Brake with Auto Hold	●	●	●	●
Electric power assist steering	●	●	●	●
i-Activ AWD	○	○	○	○
i-ELOOP	●	●	●	●
i-stop	●	●	●	●
Skyactiv-Body	●	●	●	●
Skyactiv-Chassis	●	●	●	●
Skyactiv-Vehicle Dynamics G-Vectoring Control Plus (GVC Plus)	●	●	●	●

Chassis		Sport	Touring	GT	Azami
Brake diameter (mm):	Front	----- 320 -----			
	Rear	----- 325 -----			
Brake type:	Front	----- Ventilated disc -----			
	Rear	----- Solid disc -----			
Suspension:	Front	----- MacPherson strut -----			
	Rear	----- Multi-link -----			
Turning circle kerb to kerb (m):		----- 11.8 -----			
Tyre size		255/60 R18	255/60 R18	255/50 R20	255/50 R20
Tyre index		108H	108H	105V	105V
Wheel size		18 x 8.0 J	18 x 8.0 J	20 x 8.5 J	20 x 8.5 J
Wheel type		----- Alloy -----			
Tyre size (spare)		----- 185/80 R17 -----			
Wheel size (spare)		----- 17 x 5.5 J -----			
Wheel type (spare)		----- Temporary (steel) -----			

● = Standard, ○ = Option.



SPECIFICATIONS

Weights and Capacities		Sport	Touring	GT	Azami
Cargo room volume VDA <sup>2</sup> (litres)		230			
Cargo room volume VDA <sup>3</sup> (litres)		810			
Gross Vehicle Mass (GVM) (kg)	2.5L Turbo I4 Petrol FWD / 6-speed automatic	2,505			
	2.5L Turbo I4 Petrol AWD / 6-speed automatic	2,575			
Kerb weight (kg)	2.5L Turbo I4 Petrol FWD / 6-speed automatic	1,878	1,878	1,934	1,934
	2.5L Turbo I4 Petrol AWD / 6-speed automatic	1,950	1,950	2,006	2,006
Payload Capacity (kg)	2.5L Turbo I4 Petrol FWD / 6-speed automatic	627	627	577	577
	2.5L Turbo I4 Petrol AWD / 6-speed automatic	625	625	575	575
Towing capacity <sup>¶</sup> (kg):	Braked	2,000			
	Unbraked	750			
Tow ball download maximum (kg)		150			

Dimensions		Sport	Touring	GT	Azami
Ground clearance laden (mm)		220			
Ground clearance unladen (mm)		222			
Overall length (mm)		5,075			
Overall width (mm)		1,969			
Overall height (mm)		1,747			
Track (mm):	Front	1,663			
	Rear	1,663			
Wheelbase (mm)		2,930			

<sup>¶</sup> When fitted with a Mazda genuine towing kit. Subject to State and Territory regulations.



SPECIFICATIONS

Exterior	Sport	Touring	GT	Azami
Daytime running lamps (Halogen)	●	●	●	—
Daytime running lamps (LED)	—	—	—	●
Door handles (body coloured)	●	●	●	●
Exhaust extensions (chrome)	●	●	●	●
Front fog-lamps (LED)	—	●	●	●
Front and rear bumpers (body coloured)	●	●	●	●
Green-tinted windscreen, side and rear windows	●	●	●	●
Headlamps (LED)	●	●	●	●
Headlamps auto on/off function	●	●	●	●
Power mirrors (body coloured with heating and auto folding function)	●	●	●	●
Power sliding and tilt glass sunroof	—	—	●	●
Power windows	●	●	●	●
Rear spoiler	●	●	●	●
Remote operated and hands free power tailgate (open/close)	—	—	●	●
Tail-lamps (LED)	●	●	●	●
Window demister (rear)	●	●	●	●
Windscreen de-icer	—	—	—	●
Wipers (front) 2-speed with rain-sensing function	●	●	●	●
Wiper (rear) with intermittent function	●	●	●	●

● = Standard, — = Not available.



SPECIFICATIONS

Interior		Sport	Touring	GT	Azami
7-inch TFT LCD multi-information meter display		—	—	—	●
Active Driving Display†		●	●	●	●
Air-conditioning (three-zone climate control) with independent rear control and vents (2nd row)		●	●	●	●
Ambient temperature display		●	●	●	●
Cargo area 12 volt power outlet		●	●	●	●
Centre armrest console		●	●	●	●
Critical function warning lights/chimes		●	●	●	●
Cupholders		●	●	●	●
Door bottle holders (front and rear)		●	●	●	●
Glove box		●	●	●	●
Heated steering wheel function		—	—	—	●
Instrument panel light dimmer		●	●	●	●
Interior illumination:	Cargo room lamp	●	●	●	●
	Entry system with delayed fade	●	●	●	●
	Map reading spot lamps (Incandescent)	●	●	—	—
	Map reading spot lamps (LED)	—	—	●	●
	Power window switches	●	●	●	●
Leather-wrapped:	Gear shift knob	●	●	●	●
	Steering wheel	●	●	●	●
Mazda Radar Cruise Control (MRCC)† with Stop & Go function		●	●	●	●
One touch (up and down) power windows (front and rear)		●	●	●	●
Overhead sunglass storage box		●	●	●	●
Rear door window sunshade		—	—	●	●

● = Standard, — = Not available.

† Driver assist technology only and should not be used in place of skilled and safe driving practices. It is the driver’s sole responsibility to monitor vehicle surroundings and conditions and comply with all applicable laws at all times.



SPECIFICATIONS

Interior	Sport	Touring	GT	Azami
Rear-view mirror with auto dimming function	●	●	●	●
Tachometer and electronic odometer/ tripmeter	●	●	●	●
Tilt and telescopic adjustable steering wheel	●	●	●	●
Trip computer	●	●	●	●
Vanity mirrors (front) with illumination	●	●	●	●

Infotainment	Sport	Touring	GT	Azami
7-inch full colour touch screen display (MZD Connect)	●	—	—	—
9-inch full colour touch screen display (MZD Connect)	—	●	●	●
AM/FM tuner	●	●	●	●
Apple Car Play® and Android® Auto <sup>§</sup>	●	●	●	●
Auxiliary-audio input jack (3.5mm mini-stereo)	●	●	●	●
Bluetooth® hands-free phone and audio capability <sup>§</sup>	●	●	●	●
Digital radio (DAB+)	●	●	●	●
Internet radio integration (Stitcher™ and Aha™ )	●	●	●	●
Multi-function commander control	●	●	●	●
Premium Bose® 294 watt amplifier and speakers	—	—	●	●
Radio Data System (RDS) program information	●	●	●	●
Satellite navigation	●	●	●	●
Speakers (6)	●	●	—	—
Speakers (12)	—	—	●	●
Steering wheel-mounted audio controls	●	●	●	●
USB-audio input ports (iPod compatible)	●	●	●	●

● = Standard, — = Not available.

§ Please check the compatibility of your Bluetooth® device (particularly your mobile phone) with the specific Mazda vehicle you intend to purchase as not all devices operate correctly. Visit [www.mazda.com.au/Bluetooth](http://www.mazda.com.au/Bluetooth) or consult your Mazda Dealer for further information. Apple Car Play® is a trademark of Apple Inc., registered in the U.S. and other countries.



SPECIFICATIONS

Safety and Security		Sport	Touring	GT	Azami
360° View Monitor†		—	—	—	●
Adaptive LED Headlamps (ALH)†		—	—	—	●
Blind Spot Monitoring (BSM)†		●	●	●	●
Advanced keyless entry		—	●	●	●
Advanced keyless push-button engine start		●	●	●	●
Airbags SRS:	Front (driver and passenger)	●	●	●	●
	Side (front)	●	●	●	●
	Curtain (front and rear)	●	●	●	●
Anti-lock Braking System (ABS)†		●	●	●	●
Auto Door Lock (ADL)†		●	●	●	●
Childproof rear door locks		●	●	●	●
Child restraint anchorage points:	ISOFIX (x2)	●	●	●	●
	Top tether (x5)	●	●	●	●
Driver Attention Alert (DAA)†		●	●	●	●
Dynamic Stability Control (DSC)†		●	●	●	●
Electronic Brake-force Distribution (EBD)†		●	●	●	●
Emergency Brake Assist (EBA)†		●	●	●	●
Emergency Stop Signal (ESS)†		●	●	●	●
Engine immobiliser		●	●	●	●
Forward Obstruction Warning (FOW)†		●	●	●	●
High Beam Control (HBC)†		●	●	●	—
High mount stop lamp		●	●	●	●
Hill Launch Assist (HLA)†		●	●	●	●
Intrusion-minimising brake pedal		●	●	●	●
Lane-keep Assist System (LAS)†		●	●	●	●

● = Standard, — = Not available.

† Driver assist technology only and should not be used in place of skilled and safe driving practices. It is the driver's sole responsibility to monitor vehicle surroundings and conditions and comply with all applicable laws at all times.



SPECIFICATIONS

Safety and Security	Sport	Touring	GT	Azami
Lane Departure Warning (LDW) <sup>†</sup>	●	●	●	●
Left-hand-side convex (wide angle) exterior mirror	●	●	●	●
Parking sensors (front)	—	●	●	●
Parking sensors (rear)	●	●	●	●
Rear Cross Traffic Alert (RCTA) <sup>†</sup>	●	●	●	●
Remote central locking (2 transmitters)	●	●	●	●
Reverse camera	●	●	●	●
Roll Stability Control (RSC) <sup>†</sup>	●	●	●	●
Seat-belt warning (front and rear)	●	●	●	●
Seat-belts 3-point lap-sash (all seats)	●	●	●	●
Seat-belts (front) with pretensioners, load-limiters and height adjustable shoulder anchorages	●	●	●	●
Seat-belts (2nd row) with pretensioners and load-limiters	●	●	●	●
Side impact door beams	●	●	●	●
Smart Brake Support (SBS) <sup>†</sup>	●	●	●	●
Smart City Brake Support [Forward/Reverse] (SCBS F/R) <sup>†</sup>	●	●	●	●
Traction Control System (TCS) <sup>†</sup>	●	●	●	●
Trailer Stability Assist (TSA) <sup>†</sup>	●	●	●	●
Traffic Sign Recognition (TSR) <sup>†</sup>	●	●	●	●
‘Triple H’ safety construction with front and rear crumple zones	●	●	●	●
Tyre Pressure Monitoring System (TPMS) <sup>†</sup>	●	●	●	●
Whiplash-minimising front seats	●	●	●	●

● = Standard, — = Not available.

<sup>†</sup> Driver assist technology only and should not be used in place of skilled and safe driving practices. It is the driver's sole responsibility to monitor vehicle surroundings and conditions and comply with all applicable laws at all times.



**5**  
YEAR | UNLIMITED  
KILOMETRE  
WARRANTY

**5**  
YEAR | PREMIUM  
ROADSIDE  
ASSISTANCE



## REST ASSURED — YOUR WARRANTY

The quality built into Mazda CX-9 is backed up by a 5 year, unlimited kilometre factory warranty and 6 year panel protection warranty.\*

## HELP IS AT HAND — MAZDA ROADSIDE ASSISTANCE

Mazda Premium Roadside Assistance is now included with the purchase of all new Mazda vehicles. Whether it's a flat battery, locked-in keys, accident support and flat or damaged tyres, we've got you covered, day or night, city or country. With Mazda Premium Roadside Assistance, help is always there when you need it. (Terms and conditions apply.)

## MAINTAIN THAT ZOOM-ZOOM

Your Mazda CX-9 deserves the best in care. Servicing with Mazda Service Select gives your car the advantage of factory trained Service Technicians and advanced computer diagnostic systems. As well as maintaining your Mazda in A1 condition, you'll also be protecting your vehicle's outstanding resale value.

\* New 5 year unlimited kilometre warranty available on all brand new vehicles purchased from 1 August 2018.  
For full terms and conditions please visit <https://www.mazda.com.au/owners/warranty/>





For further information, visit [mazda.com.au](https://mazda.com.au)  
or Freecall 1800 034 411

All care is taken to ensure the accuracy of this brochure and availability of vehicles and features at the time of publication, however, to the extent permitted by law, Mazda Australia Pty Ltd will not be liable for any loss suffered or incurred by a purchaser or prospective purchaser if the content is inaccurate or not up to date, or if it withdraws any vehicles or features referred to in the brochure from the market. Specifications, features and model availability may vary from state to state and may change without notice. Please refer to [mazda.com.au](https://mazda.com.au) or consult your Mazda Dealer prior to placing an order to ascertain current information on model availability, specifications, options, features and prices. Mazda Australia Pty Ltd ABN 78 004 690 804. 211A Wellington Road, Mulgrave, Victoria 3170. iPod is a trademark of Apple Inc., registered in the US and other countries. Published January 2020. MAZ14269



ZOOM-ZOOM



# MAZDA CX-9 ACCESSORIES



mazda



**FEATURED HERE**

- Front mud guards
- Rear mud guards
- Roof racks
- Slimline weathershields
- Tow bar\*



**MAKE YOUR  
MAZDA EVEN  
MORE  
REWARDING**

New Mazda CX-9 is the seven seat SUV where luxury meets family. Mazda Genuine Accessories enhance the styling and practical features, while customising and protecting your investment. Featuring outstanding design, quality, fit and safety, each accessory comes backed by a Mazda Warranty. Mazda Genuine Accessories add extra Zoom-Zoom to your CX-9 and indulge your family even more.

\*Features maximum 2,000kg braked towing capacity and 150kg tow ball download limit. Tow bar disables hands-free tailgate for Azami grades. Subject to State or Territory regulations. Chrome tow ball sold separately.

Azami in Machine Grey Metallic.



**KAYAK HOLDER**

A convenient way to carry a canoe, kayak or similar sized watercraft.



**UNIVERSAL CARRIER**

This streamlined and easy-to-use carrier allows you to bring all sorts of objects along safely and securely.



**BIKE RACK (WHEEL OFF)**

Makes it easier to take your bike along for the ride.



**BIKE RACK (WHEEL ON)**

Transport your bike without the inconvenience of removing a wheel.





**CARGO TRAY**

A durable, custom-fitted tray with raised edges to protect the load compartment from spills, dirt and scratches.



**CARGO ORGANISER BOX**

Prevent items from sliding around in the cargo area. Features moveable internal dividers, detachable lids and a securable base.



**CARGO NET**

Restrain smaller cargo items in the load compartment with this easily removable netting.



**CARGO COVER**

Keep valuable items hidden from view.



**CARGO ILLUMINATION**

Additional LED lighting that allows for a clearer view of the load compartment.





**HEADLIGHT PROTECTORS**

Shield headlamps from costly damage.



**BONNET PROTECTOR**

Guards the bonnet against damage caused by road debris.  
(Smoke Bonnet Protector also available)



**COLLAPSIBLE SUN SCREEN**

Keep your vehicle cool and protect the interior from the sun's harmful rays.



**FRONT PARKING SENSORS**

Take the guesswork out of parking with audio alerts advising the distance between your CX-9 and objects to the front. (Only compatible with Sport model)



**FRONT MUDGUARDS**

Stop mud and road grime collecting on the front bodywork of your car.



**REAR BUMPER STEP PLATE**

Protect tailgate paintwork from damage while enhancing its appearance.



**REAR WINDOW SHADES**

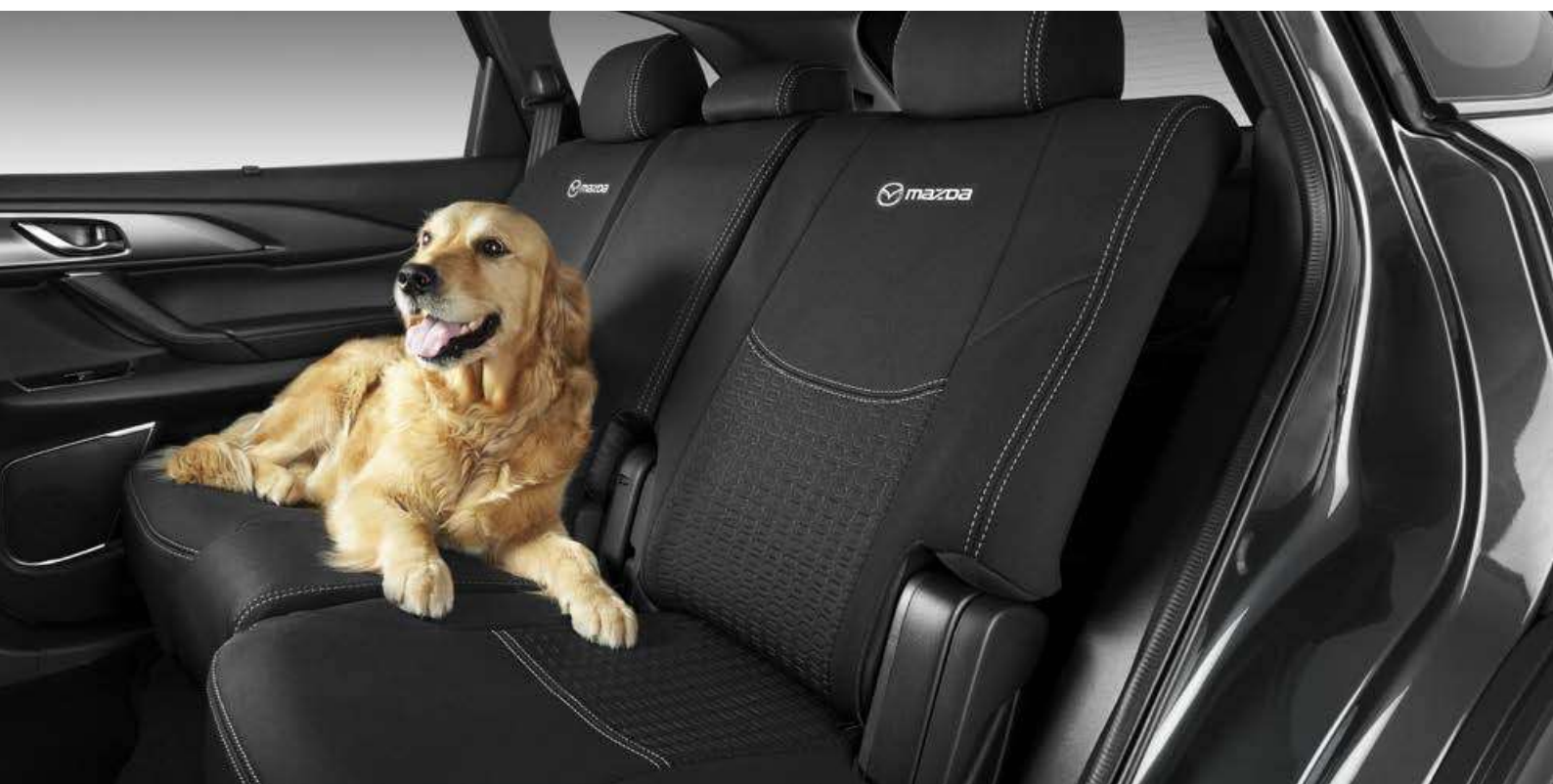
Provide sun protection for rear passengers and cargo.  
(Set of two) (Sport and Touring models only)





**FRONT SEAT COVERS**

These durable, waterproof neoprene covers keep your seats free from dirt and grime, and offer full airbag compatibility.



**REAR SEAT COVERS**

Guard against dirt, spills, damage and the effects of wear with this lightweight, waterproof cover.



**FRONT FLOOR MATS**

Protect your carpet with these high-quality, tailor-made floor mats. Fastening system enhances safety. (Front and rear sold separately)





### WELCOME ILLUMINATION

Welcome lighting radiates soft blue illumination from both foot wells.



### REAR SEAT ENTERTAINMENT HOLDER FOR iPad®

Keep rear seat passengers entertained with this convenient holder for your iPad®.



### MOBILE PHONE HOLDER

Safe, stylish and compatible with many popular phones, this gives drivers easy phone visibility and access. Allows for portrait or landscape use.



### SCUFF PLATES

Guard door sills from scratches and scuffing with protective plates styled to enhance the look of your CX-9.



### BOOT LIP PROTECTOR

Protect your rear bumper and boot lip from scratches and scuffs during loading and unloading.





**ALSO AVAILABLE**

Audio retractable Lightning cable

Audio retractable Micro USB cable

Black wheel lock set

Chrome wheel lock set

Mazda retractable audio cable

Rear floor mats

Retractable USB to type C cable

Tow ball

Tow ball cover

For further information,  
visit [mazda.com.au](https://www.mazda.com.au)  
or Freecall 1800 034 411

See the full range of Mazda Genuine Accessories at [mazda.com.au](https://www.mazda.com.au)

All care is taken to ensure the accuracy of this brochure and availability of vehicles and features at the time of publication, however, to the extent permitted by law, Mazda Australia Pty Ltd will not be liable for any loss suffered or incurred by a purchaser or prospective purchaser if the content is inaccurate or not up to date, or if it withdraws any vehicles or features referred to in the brochure from the market. Sports and other equipment shown in the brochure are for illustration purposes only and do not come standard with the vehicle, or as Mazda Genuine Accessories. Specifications, features and availability may vary from State to State and may change without notice. Please refer to [mazda.com.au](https://www.mazda.com.au) or consult your Mazda Dealer prior to placing an order to ascertain current information on availability, specifications, features and prices. Mazda Australia Pty Ltd ABN 78 004 690 804. 211A Wellington Road, Mulgrave VIC 3170. All Mazda Genuine Accessories fitted at the point of sale of a new Mazda passenger vehicle are covered under the Mazda 5 year/unlimited kilometre warranty. Mazda Genuine Accessories fitted after the sale of a new Mazda vehicle are covered by the Mazda 2 year or 40,000 kilometre warranty (whichever should occur first). New 5 year unlimited kilometre warranty available on all brand new vehicles purchased from 1 August 2018. For full terms and conditions please visit <https://www.mazda.com.au/owners/warranty/iPhone>® is a trademark of Apple Inc., registered in the U.S. and other countries. Published January 2020. MAZ14296