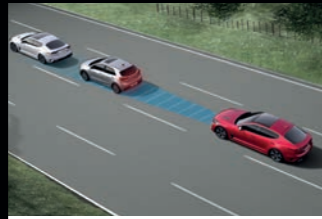


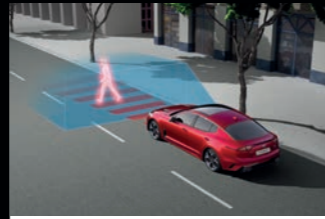
FEATURES



Lane Keeping Assist[†]



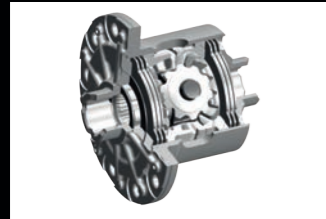
Advanced Smart Cruise Control[†]



Autonomous Emergency Braking[†]



Brembo[®] Brakes



Limited Slip Differential (LSD)



Launch Control (0-100km/h in 4.9sec)



Satellite Navigation with DAB Digital Radio



Smartphone Connectivity[§]



Colour Head Up Display with Digital Speedometer (Exclusive to GT)



Dynamic Stability Damping Control (Exclusive to GT)

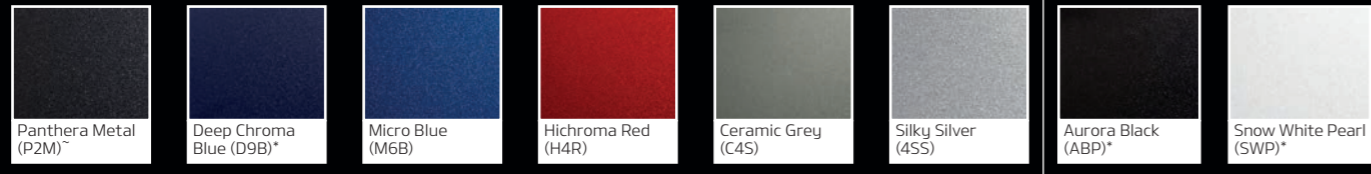


harman/kardon[®] 15 Speaker Premium Sound System (Exclusive to GT)



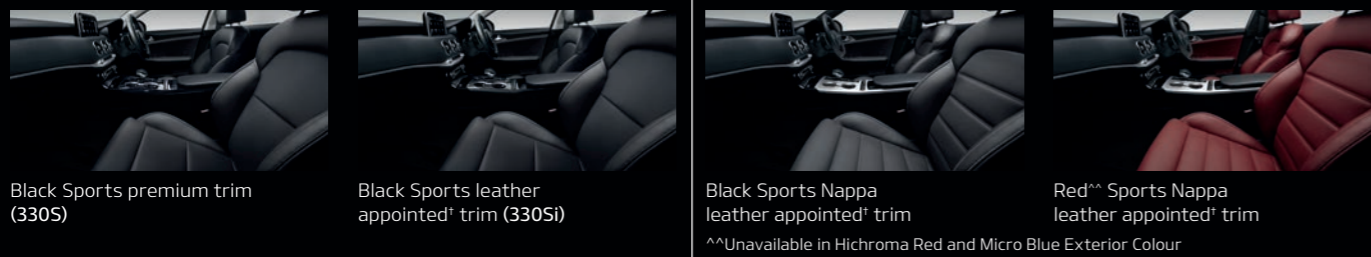
360° Camera View (Exclusive to GT)

Exterior Colours



*Only available in 330S & 330Si. *Pearl paints at additional cost.

Interior Colours



^^Unavailable in Hichroma Red and Micro Blue Exterior Colour

Engine



272kW 3.3L Twin Turbo V6 Petrol

Wheels



18" Alloy (330S)



19" Alloy (330Si)



19" Alloy (GT)

[†]Safety technologies are supplemental systems and do not replace the need for the driver to exercise care and attention. ^{††}Leather appointed seats may comprise of genuine leather, polyurethane and other man-made materials or a combination thereof. [§]Apple CarPlay™ connectivity requires compatible iOS device. See apple.com.au for more details. Android Auto connectivity requires compatible Android device. See android.com/intl/en_au/ for more details. Apple CarPlay™ and iPhone® are registered trademarks of Apple Inc. Android Auto™ is a registered trademark of Google Inc. Brembo® is a registered trademark of Brembo SpA. harman/kardon® is a registered trademark of Harman International Industries, Incorporated. For full terms and conditions on Kia's 7 Year warranty, visit kia.com.au.



Kia Motors Australia Pty Ltd ABN 97 110 483 353
Locked Bag 2207, North Ryde BC NSW 1670
Phone 131 KIA (131 542)
kia.com.au



Kia. Driving Australian Sport.

KMAU4689 Part Number MSHCK3181709 Printing date August 2018

stinger



stinger

3.3L Twin Turbo V6



The Power to Surprise

stinger MY19 Mechanical & Feature List

Engine		3.3L Twin Turbo V6 Petrol		
Engine type	V6 DOHC T-GDI ¹ D-CVVT ² 24 valve			
Capacity (cc)	3,342			
Max power (kW @ rpm)	272 @ 6,000			
Max torque (Nm @ rpm)	510 @ 1,300 – 4,500			
Bore x stroke (mm)	92.0 x 83.8			
Compression ratio	10 : 1			
Transmission & Performance				
8-speed automatic (Shift-By-Wire type)	•			
Launch Control	•			
Mechanical Limited Slip Differential (LSD)	•			
Gear Ratio		8 Speed A/T		
1st	3.665			
2nd	2.396			
3rd	1.610			
4th	1.190			
5th	1.000			
6th	0.826			
7th	0.643			
8th	0.556			
Reverse	2.273			
Final gear ratio	3.538			
Dimensions				
Overall length / width / height (mm)	4,830 / 1,870 / 1,400			
Wheelbase (mm)	2,905			
Minimum ground clearance (mm)	130			
Luggage space (rear seats up) / (rear seats down) (L, VDA)	406 / 1,114			
Fuel		V3.3L Twin Turbo V6 Petrol		
Fuel consumption (L/100km) – Combined / Urban / Extra-urban*	10.2 / 14.9 / 7.5			
CO ₂ emission (g/km) – Combined / Urban / Extra-urban	239 / 346 / 177			
Hood insulator	•			
Fuel type recommended	Regular unleaded**			
Fuel tank capacity (L)	60			
Weight				
Tare weight (kg)	1,780			
Towing Capacity [^]				
Towing capacity unbraked / braked (kg)	750 / 1,500			
Max. towball download (kg)	75			
Steering, Brakes & Suspension				
Power steering system (Electric power steering)	Rack-mounted MDPS ³			
Variable Gear Ratio steering	•			
DMS ⁴ system (5 modes – Smart, Eco, Comfort, Sport, Custom)	•			
Energy absorbing steering column	•			
Tilt & telescopic adjustable steering column	• (GT: Electronically adjustable)			
Front brakes	Brembo® 4-Piston Calliper & 350mm Ventilated Disk			
Rear brakes	Brembo® 2-Piston Calliper & 340mm Ventilated Disk			
Electronic parking brake with Auto Hold	•			
Front / Rear suspension	McPherson strut / Multi-link			
DSDC (Dynamic Stability Damping Control)	GT only			
Minimum turning circle (m)	11.2			
Wheels & Tyres		330S	330Si	GT
Wheel type	Alloy (Machine finish)	Alloy (Machine finish)	Alloy (Machine finish)	
Wheel size	18"	19"	19"	
Tyres	F&R: 225/45 R18 ContiSportContact 5	F: 225/40 R19 R: 255/35 R19 ContiSportContact 5	F: 225/40 R19 R: 255/35 R19 Michelin Pilot Sport 4	
TPMS (Tyre Pressure Monitoring System)	•	•	•	
Spare wheel type	Temporary Spare	Temporary Spare	Temporary Spare	
Safety				
Active Safety				
ABS (Anti-lock Braking System) with EBD ⁵ & BA ⁶	•	•	•	•
ESC (Electronic Stability Control) with TCS ⁷	•	•	•	•
VSM (Vehicle Stability Management)	•	•	•	•
HAC (Hill-start Assist Control)	•	•	•	•
ESS (Emergency Stop Signal)	•	•	•	•
Seatbelt warning chime & light on all positions	•	•	•	•
Rear parking sensors with dash display	•	•	•	•
Front parking sensors with dash display	-	•	•	•
Rear view camera with in-audio screen display & dynamic parking guidelines	•	•	•	•
360° Camera View	-	-	•	•
Electrochromic rear view mirror (auto dimming)	•	•	•	•
Electrochromic outside door mirrors	-	-	•	•
AEB (Autonomous Emergency Braking)** with FCWS (Forward Collision Warning System)**	•	•	•	•
LKA (Lane Keeping Assist)**	•	•	•	•

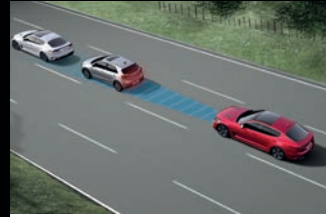
Safety	330S	330Si	GT
Active Safety			
BSD (Blind Spot Detection)**	-	-	•
RCTA (Rear Cross Traffic Alert)**	-	-	•
DAA (Driver Attention Alert)	•	•	•
Active Hood Lift System (AHLIS)	•	•	•
High-mount rear stop light (LED)	•	•	•
LED Daytime Running Lights (DRL) & LED Position Lamp	•	•	•
Dynamic Bending Light (DBL) and High Beam Assist (HBA)	-	-	•
Dusk-sensing automatic headlights	•	•	•
Speed sensing auto door lock	•	•	•
Child restraint anchorage points (3 x anchors / 2 x ISOFIX positions)	•	•	•
3-point ELR seatbelts on all positions	•	•	•
Passive Safety			
Driver & front passenger SRS airbags	•	•	•
Front side SRS airbags	•	•	•
Curtain SRS airbags	•	•	•
Driver side knee airbag	•	•	•
Front seatbelt pre-tensioners with load limiters	•	•	•
Side door impact beams	•	•	•
Impact sensing auto door unlocking	•	•	•
Security			
Anti-theft immobiliser	•	•	•
Burglar alarm with security indicator	•	•	•
Remote central locking with keyless entry & boot release	•	•	•
Smart key with push button start	•	•	•
Headlight escort function	•	•	•
Remote fuel lid release	•	•	•
Seating			
Seat capacity	5	5	5
Sports premium seats	•	-	-
Sports leather appointed ¹ seats	-	•	-
Sports Nappa leather appointed ¹ seats with GT logo	-	-	•
8-way power driver's seat	•	•	•
Driver's seat lumbar support, Bolster adjuster & thigh extender (Powered)	-	-	•
6-way front passenger seat including height adjust (pumping device)	•	•	-
8-way power front passenger's seat & lumbar support	-	-	•
IMS ⁸ driver's seat with 2 seating position memory & easy access function	-	-	•
Split fold flat rear seats (60:40)	•	•	•
Rear centre armrest with cup holders	•	•	•
Headrests with height adjust & tilt function (Front seats)	•	•	•
Height adjustable headrests (all seats)	•	•	•
Height adjustable front seatbelts	•	•	•
Exterior Features			
Exclusive Black & Chrome 'Schreyer' grille surround	•	•	•
Exclusive exterior treatment (front & rear bumper, black gloss fender garnish, side moulding)	•	•	•
Body coloured outside door handles	•	•	•
Dark chrome finish outside door mirrors	•	•	•
Electric folding outside door mirrors (heated) with automatic folding function	•	•	•
Puddle Lamps	•	•	•
Outside mirror mounted side indicators	•	•	•
Projection headlights with manual levelling	•	•	-
LED headlights with auto levelling	-	-	•
Smart trunk (auto release)	-	-	•
LED rear combination lights	•	•	•
Quad-exhaust pipes (Chrome coated)	•	•	•
Powered sunroof (slide & tilt)	-	-	•
Windscreen with sunband	•	•	•
Front wiper & washer (variable intermittent / 2-speed)	•	•	•
Aero-blade wipers	•	•	•
Rain sensing wipers	•	•	•
Interior Features			
ASCC (Advanced Smart Cruise Control)** with steering wheel mounted controls.	•	•	•
Premium steering wheel	•	•	-
Flat-bottom perforated leather ¹ sports steering wheel with GT logo	-	-	•
Paddle shifters	•	•	•
Switch-By-Wire shift knob	•	•	•
3.5" Mono-type LCD instrument cluster	•	•	-
7" Colour TFT-LCD Supervision instrument cluster	-	-	•
Colour Head-Up Display (HUD) with Digital Speedometer	-	-	•
GT Interface (Oil Temperature, Torque and Boost gauge, Lap timer & G-Force metre)	-	-	•
Digital Speedometer & Multi-function trip computer	•	•	•

Interior Features	330S	330Si	GT
User selectable options (Auto door lock/unlock, one touch turn, etc.)	•	•	•
Low washer fluid warning	•	•	•
Digital clock in audio screen display	•	•	•
Ambient temperature display	•	•	•
Front power windows auto up & down with safety function	•	•	•
Alloy door scuff panels	-	-	•
Alloy sports pedals	-	-	•
Driver's foot rest	•	•	•
Metal look interior trim accents (vent surrounds & door handles)	•	•	•
Black high gloss trim (console & door)	•	-	-
Carbon fibre pattern film insert trim (console & door)	-	•	-
Aluminium & film insert trim (console & door)	-	-	•
Suede interior trim (Roof, Pillar, Sunvisors)	-	-	•
Interior mood lighting	-	-	•
Interior LED lights (front & rear) with delay out	•	•	•
Stainless Steel luggage still plate	-	-	•
Luggage area LED lamps	•	•	•
Rear window defroster	•	•	•
2 x 12V power outlets (1 x front console & 1 x behind centre console)	•	•	•
2 x USB charger (1 x centre console & 1 x front tray)	•	•	•
Wireless phone charging (Qi)***	-	-	•
Driver & passenger sunvisors with illuminated vanity mirrors & sliding function	•	•	•
Storage			
4 x cup holders (front & rear)	•	•	•
4 x bottle holders (front & rear doors)	•	•	•
Map pockets in front & rear doors	•	•	•
Sunglass holder	•	•	•
Glovebox with illumination	•	•	•
Centre console storage box	•	•	•
Front seat back pockets	•	•	•
Luggage net hooks (cargo area)	•	•	•
Luggage net	-	•	•
Luggage screen	•	•	•
Audio			
7" Touch screen infotainment system with MP3 compatible audio player and AM/FM tuner	•	-	-
8" touch screen infotainment system with MP3 compatible audio player and AM/FM tuner	-	•	•
DAB digital radio	•	•	•
Satellite navigation multimedia system with 10 years traffic information (SUNA™) & 10 years MapCare	•	•	•
6 speakers (front door, rear door & front tweeters)	•	-	-
9 speakers (front door, rear door, front tweeters, 2 x under seat subwoofer & centre speaker)	-	•	-
15 speaker premium sound system – harman/kardon® brand (8 speakers, 4 tweeters, centre speaker & 2 x under seat subwoofer all powered by an external amplifier)	-	-	•
Active Sound Design (ASD)	-	•	•
Android Auto™ with voice recognition	•	•	•
Apple CarPlay™ with voice recognition	•	•	•
AUX/USB input with iPod® compatibility (on selected iPod® models)	•	•	•
Bluetooth® functionality with voice recognition (phone/media stream) [†]	•	•	•
Steering wheel mounted audio controls	•	•	•
SDVC (Speed Dependent Volume Control)	•	•	•
Quantum Logic Surround	-	-	•
Clari-FI	-	-	•
Shark fin antenna	•	•	•
Ventilation			
Dual-zone climate control air-conditioning	•	•	•
In-audio screen climate control display	•	•	•
Auto defog system	•	•	•
Rear air vents	•	•	•
Ventilated & heated front seats	-	-	•

- Not available • Standard

For full terms and conditions, visit www.kia.com.au Kia Motors Australia ABN 97110 483 353 Locked Bag 2207, North Ryde BC NSW 1670. Specifications apply to 2018 Model Year Stinger. Kia Motors Australia reserves the right to discontinue or change the models, features, specifications, options, designs and prices of products referred to in this sheet without incurring any liability whatsoever to any purchaser or prospective purchaser of any such products. Some of the items herein are optional at additional cost. Consult your Kia dealer for the latest information on models, specifications, features, prices, options and availability. SUNA™ is a registered trademark of Suna Traffic Channel. iPod® is a registered trademark of Apple Computer Inc., registered in the U.S. and other countries. Apple CarPlay™ connectivity requires compatible iOS device. See apple.com.au for more details. Android Auto™ connectivity requires compatible Android device. See android.com/intl/en_au/ for more details. Apple CarPlay™ is a registered trademark of Apple Inc. Android Auto is a registered trademark of Google Inc. Bluetooth® is a registered trademark of Bluetooth SIG. Brembo® is a registered trademark of Brembo SpA. harman/kardon® is a registered trademark of Harman International Industries, Incorporated. *Fuel consumption figures are based on ADR81/02 test results. They are useful in comparing the fuel consumption of different vehicles. They may not be the fuel consumption achieved in practice. This will depend on traffic and road conditions and how the vehicle is driven. †E10 Compatible. **Wireless charging compatible with phones featuring Qi technology or adapter. ^Subject to State regulations and towbar design. †Leather appointed seats may comprise of genuine leather, polyurethane and other man-made materials or a combination thereof. †Not all mobile phones will be compatible with the vehicle's Bluetooth® system. **Safety technologies are supplemental systems and do not replace the need for the driver to exercise care and attention. Autonomous Emergency Braking system applies to all MY18 Stinger 200S and 300S built from March 2018. †T-GDI – Turbo Gasoline Direct Injection. †D-CVVT – Dual Continuous Variable Valve Timing. †MDPS – Motor Driven Power Steering. †Drive Mode Select. †EBD – Electronic Brake Distribution. †BA – Brake Assist. †TCS – Traction Control System. †IMS – Integrated Memory System.

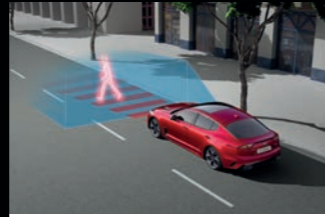
FEATURES



Advanced Smart Cruise Control[^]



Lane Keeping Assist[^]



Autonomous Emergency Braking[^]



android auto

Smartphone Connectivity[§]



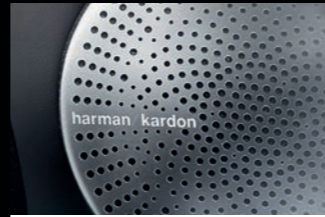
Satellite Navigation with DAB Digital Radio



Drive Mode Select System



Colour Head Up Display with Digital Speedometer (GT-Line)



harman/kardon[®] 15 Speaker Premium Sound System (GT-Line)



Blind Spot Detection[^] (GT-Line)



Dynamic Stability Damping Control (GT-Line)

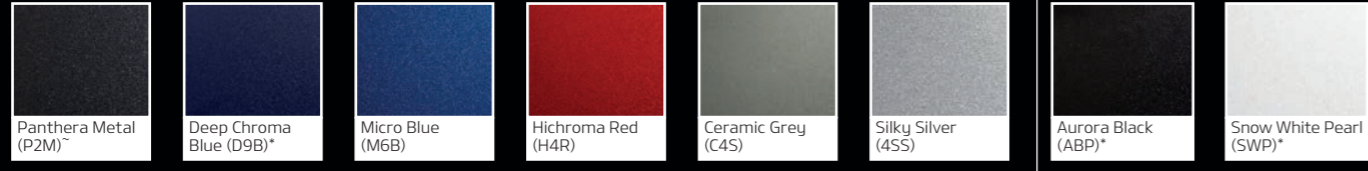


360° Camera View (GT-Line)



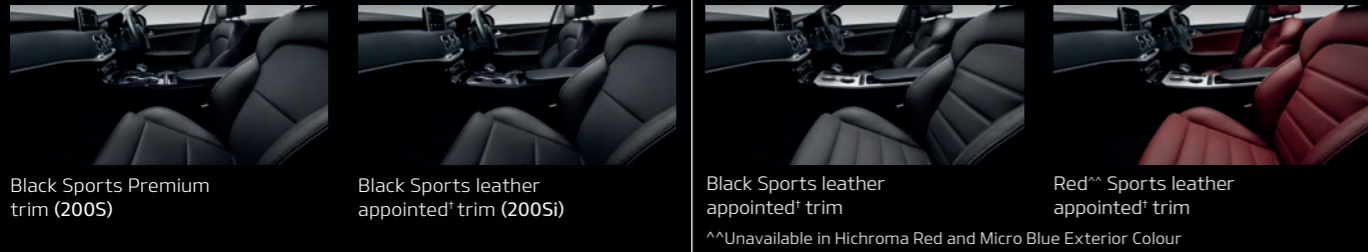
GT-Line Body Kit (GT-Line)

Exterior Colours



[~]Only available in 200S & 200Si. ^{*}Pearl paints at additional cost.

Interior Colours



Black Sports Premium trim (200S)

Black Sports leather appointed[†] trim (200Si)

Black Sports leather appointed[†] trim

Red^{^^} Sports leather appointed[†] trim

^{^^}Unavailable in Hichroma Red and Micro Blue Exterior Colour

Engine



182kW Turbo Petrol

Wheels



18" Alloy (200S and 200Si)



19" Alloy (GT-Line)

For full terms and conditions on Kia's 7 Year warranty, visit kia.com.au. [^]Safety technologies are supplemental systems and do not replace the need for the driver to exercise care and attention. [†]Leather appointed seats may comprise of genuine leather, polyurethane and other man-made materials or a combination thereof. [§]Apple CarPlay™ connectivity requires compatible iOS device. See apple.com.au for more details. Android Auto connectivity requires compatible Android device. See android.com/int/en_au/ for more details. Apple CarPlay™ and iPhone® are registered trademarks of Apple Inc. Android Auto™ is a registered trademark of Google Inc. harman/kardon® is a registered trademark of Harman International Industries, Incorporated.



Kia Motors Australia Pty Ltd ABN 97 110 483 353
Locked Bag 2207, North Ryde BC NSW 1670
Phone 131 KIA (131 542)
kia.com.au



Kia. Driving Australian Sport.



AUSTRALIA'S
BEST CARS

2018 LARGE CAR < 70,000



The Power to Surprise

stinger

2.0L Turbo

KMAU4689 Part Number M5HC2181709. Printing date: August 2018

stinger MY19 Mechanical & Feature List

Engine		2.0L Turbo Petrol	
Engine type	In-line 4 cyl. DOHC T-GDI ¹ D-CVVT ² 16 valve		
Capacity (cc)	1,998		
Max power (kW @ rpm)	182 @ 6,200		
Max torque (Nm @ rpm)	353 @ 1,400 – 4,000		
Bore x stroke (mm)	86.0 x 86.0		
Compression ratio	10 : 1		
Transmission & Performance			
8-speed automatic (Shift-By-Wire type)	•		
Launch Control	•		
Gear Ratio		8 Speed A/T	
1st	3.964		
2nd	2.468		
3rd	1.610		
4th	1.176		
5th	1.000		
6th	0.832		
7th	0.652		
8th	0.565		
Reverse	2.273		
Final gear ratio	3.727		
Dimensions		4 Door Large Sedan	
Overall length / width / height (mm)	4,830 / 1,870 / 1,400		
Wheelbase (mm)	2,905		
Minimum ground clearance (mm)	130		
Luggage space (rear seats up) / (rear seats down) (L, VDA)	406 / 1,114		
Fuel		2.0L Turbo Petrol	
Fuel consumption (L/100km) - Combined / Urban / Extra-urban*	8.8 / 12.7 / 6.5		
CO ₂ emission (g/km) - Combined / Urban / Extra-urban	201 / 290 / 150		
Hood insulator	•		
Fuel type recommended	Regular unleaded**		
Fuel tank capacity (L)	60		
Weight			
Tare weight (kg)	1,693		
Towing Capacity [^]			
Towing capacity unbraked / braked (kg)	750 / 1,500		
Max. towball download (kg)	75		
Steering, Brakes & Suspension			
Power steering system (Electric power steering)	Rack-mounted MDPS ³		
DMS ⁴ system (5 modes - Smart, Eco, Comfort, Sport, Custom)	•		
Energy absorbing steering column	•		
Tilt & telescopic adjustable steering column	•		
Front / Rear brakes	320mm ventilated disc / 314mm solid disc		
Electronic parking brake with Auto Hold	•		
Front / Rear suspension	McPherson strut / Multi-link		
DSDC (Dynamic Stability Damping Control)	GT-Line only		
Minimum turning circle (m)	11.2		
Wheels & Tyres		200S	200Si
Wheel type	Alloy	Alloy	Alloy (Machine finish)
Wheel size	18"	18"	19"
Tyres	F&R: 225/45 R18 ContiSportContact 5	F&R: 225/45 R18 ContiSportContact 5	F: 225/40 R19 R: 255/35 R19 ContiSportContact 5
TPMS (Tyre Pressure Monitoring System)	•	•	•
Spare wheel type	Temporary Spare	Temporary Spare	Temporary Spare
Safety			
Active Safety			
ABS (Anti-lock Braking System) with EBD ⁵ & BA ⁶	•	•	•
ESC (Electronic Stability Control) with TCS ⁷	•	•	•
VSM (Vehicle Stability Management)	•	•	•
HAC (Hill-start Assist Control)	•	•	•
ESS (Emergency Stop Signal)	•	•	•
Seatbelt warning chime & light on all positions	•	•	•
Rear parking sensors with dash display	•	•	•
Front parking sensors with dash display	-	•	•
Rear view camera with in-audio screen display & dynamic parking guidelines	•	•	•
360° Camera View	-	-	•
Electrochromic rear view mirror (auto dimming)	•	•	•
Electrochromic outside door mirrors	-	-	•
AEB (Autonomous Emergency Braking)** with FCWS (Forward Collision Warning System)**	•	•	•
LKA (Lane Keeping Assist)**	•	•	•
BSD (Blind Spot Detection)**	-	-	•
RCTA (Rear Cross Traffic Alert) **	-	-	•
DAA (Driver Attention Alert)	•	•	•

Safety	200S	200Si	GT-Line
Active Safety			
Active Hood Lift System (AHLS)	•	•	•
High-mount rear stop light (LED)	•	•	•
LED Daytime Running Lights (DRL) & LED Position Lamp	•	•	•
Dynamic Bending Light (DBL) and High Beam Assist (HBA)	-	-	•
Dusk-sensing automatic headlights	•	•	•
Speed sensing auto door lock	•	•	•
Child restraint anchorage points (3 x anchors / 2 x ISOFIX positions)	•	•	•
3-point ELR seatbelts on all positions	•	•	•
Passive Safety			
Driver & front passenger SRS airbags	•	•	•
Front side SRS airbags	•	•	•
Curtain SRS airbags	•	•	•
Driver side knee airbag	•	•	•
Front seatbelt pre-tensioners with load limiters	•	•	•
Side door impact beams	•	•	•
Impact sensing auto door unlocking	•	•	•
Security			
Anti-theft immobiliser	•	•	•
Burglar alarm with security indicator	•	•	•
Remote central locking with keyless entry & boot release	•	•	•
Smart key with push button start	•	•	•
Headlight escort function	•	•	•
Remote fuel lid release	•	•	•
Seating			
Seat capacity	5	5	5
Sports premium seats	•	-	-
Sports leather appointed ¹ seats	-	•	(with GT-Line logo)
8-way power driver's seat	•	•	•
Driver's seat lumbar support, Bolster adjuster & thigh extender (Powered)	-	-	•
6-way front passenger seat including height adjust (pumping device)	•	•	-
8-way power front passenger's seat & lumbar support	-	-	•
IMS ⁸ driver's seat with 2 seating position memory & easy access function	-	-	•
Split fold flat rear seats (60:40)	•	•	•
Rear centre armrest with cup holders	•	•	•
Headrests with height adjust & tilt function (Front seats)	•	•	•
Height adjustable headrests (all seats)	•	•	•
Height adjustable front seatbelts	•	•	•
Exterior Features			
Black & Chrome 'Schreyer' grille surround	•	•	-
Exclusive Black & Chrome 'Schreyer' grille surround	-	-	•
Exclusive exterior treatment (front & rear bumper, black gloss fender garnish, side moulding)	-	-	•
Body coloured door handles with chrome accents	•	•	-
Body coloured outside door handles	-	-	•
Dark chrome finish outside door mirrors	-	-	•
Electric folding outside door mirrors (heated) with automatic folding function and Puddle lamps	•	•	•
Outside mirror mounted side indicators	•	•	•
Projection headlights with manual levelling	•	•	-
LED headlights with auto levelling	-	-	•
Smart trunk (auto release)	-	-	•
LED rear combination lights	•	•	•
Quad-exhaust pipes (Chrome coated)	•	•	•
Powered sunroof (slide & tilt)	-	-	•
Windscreen with sunband	•	•	•
Front wiper & washer (variable intermittent / 2-speed)	•	•	•
Aero-blade wipers	•	•	•
Rain sensing wipers	•	•	•
Interior Features			
ASCC (Advanced Smart Cruise Control)** with steering wheel mounted controls	•	•	•
Premium steering wheel	•	•	-
Flat-bottom perforated leather appointed ¹ sports steering wheel with GT-Line logo	-	-	•
Paddle shifters	•	•	•
Switch-By-Wire shift knob	•	•	•
3.5" Mono-type LCD instrument cluster	•	•	-
7" Colour TFT-LCD Supervision instrument cluster	-	-	•
Colour Head-Up Display (HUD) with Digital Speedometer	-	-	•
Digital Speedometer & Multi-function trip computer	•	•	•
User selectable options (Auto door lock/unlock, one touch turn, etc.)	•	•	•
Low washer fluid warning	•	•	•
Digital clock in audio screen display	•	•	•
Ambient temperature display	•	•	•

Interior Features	200S	200Si	GT-Line
Front power windows auto up & down with safety function	•	•	•
Alloy door scuff panels	-	-	•
Alloy sports pedals	-	-	•
Driver's foot rest	•	•	•
Metal look interior trim accents (vent surrounds & door handles)	•	•	•
Black high gloss trim (console & door)	•	-	-
Carbon fibre pattern film insert trim (console & door)	-	•	-
Aluminium & Film insert trim (console & door)	-	-	•
Suede interior trim (roof, pillar, sunvisors)	-	-	•
Interior mood lighting	-	-	•
Interior LED lights (front & rear) with delay out	•	•	•
Stainless Steel luggage still plate	-	-	•
Luggage area LED lamps	•	•	•
Rear window defroster	•	•	•
2 x 12V power outlets (1 x front console & 1 x behind centre console)	•	•	•
2 x USB charger (1 x centre console & 1 x front tray)	•	•	•
Wireless phone charging (Qi)***	-	-	•
Driver & passenger sunvisors with illuminated vanity mirrors & sliding function	•	•	•
Storage			
4 x cup holders (front & rear)	•	•	•
4 x bottle holders (front & rear doors)	•	•	•
Map pockets in front & rear doors	•	•	•
Sunglass holder	•	•	•
Glovebox with illumination	•	•	•
Centre console storage box	•	•	•
Front seat back pockets	•	•	•
Luggage net hooks (cargo area)	•	•	•
Luggage net	-	•	•
Luggage screen	•	•	•
Audio			
7" Touch screen infotainment system with MP3 compatible audio player and AM/FM tuner	•	-	-
8" touch screen infotainment system with MP3 compatible audio player and AM/FM tuner	-	•	•
DAB digital radio	•	•	•
Satellite navigation multimedia system with 10 years traffic information (SUNA TM) & 10 years MapCare	•	•	•
6 speakers (front door, rear door & front tweeters)	•	-	-
9 speakers (front door, rear door, front tweeters, 2 x under seat subwoofer & centre speaker)	-	•	-
15 speaker premium sound system - harman/kardon [®] brand (8 speakers, 4 tweeters, centre speaker & 2 x under seat subwoofer all powered by an external amplifier)	-	-	•
Active Sound Design (ASD)	-	•	•
Android Auto TM with voice recognition	•	•	•
Apple CarPlay TM with voice recognition	•	•	•
AUX/USB input with iPod [®] compatibility (on selected iPod [®] models)	•	•	•
Bluetooth [®] functionality with voice recognition (phone/media stream) [†]	•	•	•
Steering wheel mounted audio controls	•	•	•
SDVC (Speed Dependent Volume Control)	•	•	•
Quantum Logic Surround	-	-	•
Clari-Fi	-	-	•
Shark fin antenna	•	•	•
Ventilation			
Dual-zone climate control air-conditioning	•	•	•
In-audio screen climate control display	•	•	•
Auto defog system	•	•	•
Rear air vents	•	•	•
Ventilated & heated front seats	-	-	•

- Not available • Standard

For full terms and conditions, visit www.kia.com.au Kia Motors Australia ABN 97110 483 353 Locked Bag 2207, North Ryde BC NSW 1670. Specifications apply to 2018 Model Year Stinger. Kia Motors Australia reserves the right to discontinue or change the models, features, specifications, options, designs and prices of products referred to in this sheet without incurring any liability whatsoever to any purchaser or prospective purchaser of any such products. Some of the items herein are optional at additional cost. Consult your Kia dealer for the latest information on models, specifications, features, prices, options and availability. SUNATM is a registered trademark of Suna Traffic Channel. iPod[®] is a registered trademark of Apple Computer Inc., registered in the U.S. and other countries. Apple CarPlayTM connectivity requires compatible iOS device. See apple.com.au for more details. Android AutoTM connectivity requires compatible Android device. See android.com/intl/en_au/ for more details. Apple CarPlayTM is a registered trademark of Apple Inc. Android Auto is a registered trademark of Google Inc. Bluetooth[®] is a registered trademark of Bluetooth SIG. harman/kardon[®] is a registered trademark of Harman International Industries, Incorporated. [†]Fuel consumption figures are based on ADR81/02 test results. They are useful in comparing the fuel consumption of different vehicles. They may not be the fuel consumption achieved in practice. This will depend on traffic and road conditions and how the vehicle is driven. ^{**}E10 Compatible. ^{***}Wireless charging compatible with phones featuring Qi technology or adapter. [^]Subject to State regulations and towbar design. ¹Leather appointed seats may comprise of genuine leather, polyurethane and other man-made materials or a combination thereof. ²Not all mobile phones will be compatible with the vehicle's Bluetooth[®] system. ^{**}Safety technologies are supplemental systems and do not replace the need for the driver to exercise care and attention. Autonomous Emergency Braking system applies to all MY18 Stinger 200S and 300S built from March 2018. ¹T-GDI - Turbo Gasoline Direct Injection. ²D-CVVT - Dual Continuous Variable Valve Timing. ³MDPS - Motor Driven Power Steering. ⁴Drive Mode Select. ⁵EBD - Electronic Brake Distribution. ⁶BA - Brake Assist. ⁷TCS - Traction Control System. ⁸IMS - Integrated Memory System.