



Golf Range Specifications Guide



*Safety technologies are designed to assist the driver, but should not be used as a substitute for safe driving practices.

^Traffic Jam Assist and stop and go function automatic transmission models only

Safety and Driver Assistance

	Golf	Golf Life	Golf R-Line	Golf GTI
Airbags				
Driver and front passenger airbags	S	S	S	S
Driver and front passenger side airbags	S	S	S	S
Rear seat side airbags	S	S	S	S
Curtain airbags, front and rear	S	S	S	S
Brakes				
Anti-lock Braking System (ABS)	S	S	S	S
Brake Assist	S	S	S	S
Electronic Brake-pressure Distribution (EBD)	S	S	S	S
Electro-mechanical parking brake	S	S	S	S
Multi-collision brake	S	S	S	S
Auto hold function	—	—	—	S
Red brake callipers	—	—	—	S
Child restraints				
Child seat top tether anchorage points (3)	S	S	S	S
ISOFIX child seat anchorage points, outer rear seats	S	S	S	S
Head restraints				
Front safety optimised head restraints, height adjustable	S	S	—	—
Rear head restraints (3)	S	S	S	S
Integrated front head restraints	—	—	S	S
IQ.DRIVE*				
Adaptive Cruise Control (ACC) with stop and go function^	S	S	S	S
Side Assist with Rear Traffic Alert	S	S	S	S
Distance warning display	S	S	S	S
Driver Fatigue Detection system	S	S	S	S
Front Assist with Pedestrian and Cyclist Monitoring functions	S	S	S	S
Lane Assist	S	S	S	S
Manoeuvre braking, front and rear	S	S	S	S
Oncoming vehicle braking when turning	S	S	S	S
Park Assist, parking bay and parallel parking assistance	S	S	S	S
Parking distance sensors, front and rear with acoustic warning	S	S	S	S
Rear View Camera (RVC)	S	S	S	S
Traffic Jam Assist^	S	S	S	S
Travel Assist	S	S	S	S
Emergency Assist	—	S	S	S
Exit Warning System	—	S	S	S
Seat belts				
3 point seat belts for all passengers	S	S	S	S
Front height adjustable with pre-tensioners and belt force limiters	S	S	S	S
Proactive occupant protection system in combination with Front Assist and Side Assist	S	S	S	S
Visual and acoustic warning for front and rear seat passengers seat belts not fastened	S	S	S	S
Vehicle Dynamics Manager				
Coordinates and activates the functions: Extended Electronic Differential Lock (XDL), Front Differential Lock and Adaptive Chassis Control	—	—	—	S

S Standard O Optional Extra P Available as part of an optional package — Not available

Safety and Driver Assistance Cont.

Anti-theft

Alarm system with interior monitoring and tilt sensor	—	—	—	S
---	---	---	---	---

Traction Control

Anti-Slip Regulation (ASR)	S	S	S	S
Electronic Differential Lock (EDL)	S	S	S	S
Electronic Stabilisation Program (ESP)	S	S	S	S
Extended Electronic Differential Lock (XDL)	S	S	S	S
Front differential lock	—	—	—	S

Exterior Equipment and Styling

Exterior lighting

LED headlights for low and high beam with LED daytime driving lights	S	S	—	—
LED performance headlights for low and high beam with unique LED daytime driving light signature	—	—	S	S
Low light sensor with automatic headlight function	S	S	S	S
LED rear tail lights	S	S	S	S
Illuminated door handle recesses	—	S	S	S
Surround lighting with welcome light	—	S	S	S
Light Assist, automatic high beam headlight function	—	—	S	S
Front fog lights, 5x LED mounted each side in lower bumper in an X formation	—	—	—	S
Illuminated LED strip on radiator grille	—	—	—	S

Window glass

Heat insulating tinted glass	S	S	S	S
Dark tinted rear side window and rear window glass, 65% light absorbing	—	—	S	S

Wheels

Alloy wheels (Norfolk) 16x7" with 205/55 R16 tyres	S	—	—	—
Alloy wheels (Ventura) 17x7½" with 225/45 R17 tyres	—	S	—	—
Alloy wheels (Bergamo) 18x7½" with 225/40 R18 tyres	—	—	S	—
Alloy wheels (Richmond) 18x7½" with 225/40 R18 tyres	—	—	—	S
Anti-theft wheel bolts	S	S	S	S
Low tyre pressure indicator	S	S	S	S
Weight and space saving spare wheel	S	S	S	S

Exterior highlights

R-Line front bumper with gloss black C signature, front spoiler and large lower air intake	—	—	S	—
R-Line rear bumper with gloss black sports diffuser and chrome trim	—	—	S	—
Lower body side sill extensions in gloss black	—	—	S	—
Lower front spoiler extensions and front bumper detail in black	—	—	—	S
Exposed chrome exhaust tail pipes, left and right	—	—	—	S
Radiator grille with red/illuminated strip and GTI nameplate	—	—	—	S
Rear bumper with black sports diffuser	—	—	—	S
Large lower air intake with black honeycomb insert	—	—	—	S
Side sill panel extensions in black finish	—	—	—	S





Overseas model shown. Local specifications may vary.

Comfort and Convenience

Golf
Golf Life
Golf R-Line
Golf GTI

Air Care

3 zone automatic climate control air conditioning	S	S	S	S
---	---	---	---	---

Armrest

Front centre armrest, height and longitudinally adjustable	S	S	S	S
--	---	---	---	---

In car entertainment and technology

Composition Media audio system	S	—	—	—
8.25" colour capacitive touch screen display, car menu with convenience and service settings	S	—	—	—
Digital Cockpit, colour digital display of speedometer and driving data	S	S	S	S
App-Connect™ USB interfaces for Apple CarPlay® and Android Auto™ in front centre console	S	S	S	S
2 USB-C ports in the front, 2 USB-C charging sockets on the centre console in the rear	S	S	S	S
Audio, telephone, driver assistance system and Digital Cockpit controls mounted on steering wheel	S	S	S	S
Bluetooth® phone connectivity and Bluetooth® audio streaming	S	S	S	S
Speakers, front and rear (6)	S	—	—	—
Innovision Cockpit	—	S	S	S
Digital Cockpit Pro, colour digital display with multiple customisable views of speedometer, navigation and driving data	—	S	S	S
Discover Pro audio and satellite navigation system	—	S	S	S
10.0" colour capacitive touch screen display with voice control, car menu with convenience and service settings	—	S	S	S
Wireless App-Connect™ for Apple CarPlay® and Android Auto™	—	S	S	S
Inductive wireless charging	—	S	S	S
Speakers, front and rear (6) plus centre speaker	—	S	S	S

Interior highlights

Decorative inlays, "new look" to dashboard and front doors	S	—	—	—
Decorative inlays, "nature crossed brushed" to dashboard and front doors	—	S	—	—
Aluminium finish accelerator and brake pedals	—	—	S	S
Decorative inlays, "carbon grey" to dashboard and front doors	—	—	S	—
Decorative inlays, "black metal chrome" to dashboard and front doors	—	—	—	S

Interior lighting

LED front (2) and rear passenger reading lights (2)	S	S	S	S
10 colour LED ambient lighting	—	S	—	—
30 colour LED ambient lighting	—	P	S	S
Driver and front passenger LED foot well lighting, selectable light colour	—	—	S	S

Locking

Keyless Go, keyless starting system including starter button	S	S	S	S
Remote central locking	S	S	S	S
Keyless Access, keyless entry and starting system including starter button	—	S	S	S

Mirrors

Automatic dimming interior rear-view mirror	S	S	S	S
Electrically heated and adjustable exterior mirrors	S	S	S	S
Electrically foldable exterior mirrors	—	S	S	S

Wipers

Rain sensor	S	S	S	S
Rear window with wash/wipe and intermittent wipe	S	S	S	S

~App-Connect is compatible for selected apps with the latest smartphone versions of iOS and Android, active data service, optional connection cable (sold separately).

S Standard O Optional Extra P Available as part of an optional package — Not available

Comfort and Convenience Cont.

Golf
Golf Life
Golf R-Line
Golf GTI

Seating and upholstery

Cloth seat upholstery	S	—	—	—
Comfort cloth seat upholstery with comfort front seats	—	S	—	—
Sport cloth and microfleece seat upholstery with sport front seats	—	—	S	—
Sports cloth 'scale paper', red decorative stitching with sport front seats	—	—	—	S
Height adjustment for front seats	S	S	S	S
Split folding rear seat backrest (40/60)	S	S	S	S
Lumbar adjustment for front seats	—	S	S	S

Steering wheel

3 spoke leather covered steering wheel	S	S	S	S
Gearshift paddles Automatic models	S	S	S	S
3 spoke leather covered sports steering wheel with touch controls	—	—	S	S

Vanity mirrors

Driver's and passenger's side vanity mirrors	S	S	S	S
Illuminated on driver's and passenger's side	S	S	S	S

Windows

Power front / rear	S	S	S	S
--------------------	---	---	---	---

Floor mats front and rear, carpet

	—	S	S	S
--	---	---	---	---

Driving profile selection

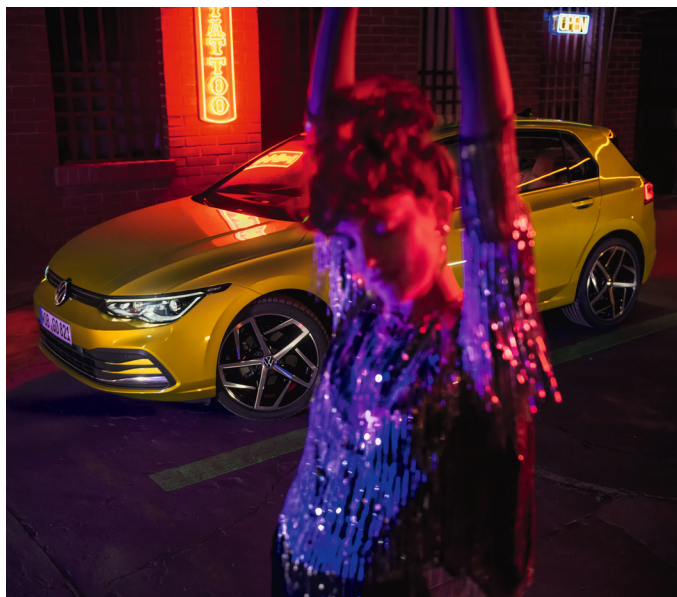
	—	—	S	S
--	---	---	---	---



Overseas model shown. Local specifications may vary.

Options

	Golf	Golf Life	Golf R-Line	Golf GTI
Paint				
Metallic / Pearl Effect paint finish	0	0	0	S
Premium Metallic paint finish	0	0	0	0
Premium Gloss paint finish	—	—	0	S
Comfort & Style package				
30 colour LED ambient lighting with driver and front passenger foot well lighting				
Microfleece and cloth seat upholstery with comfort sport front seats	—	0	—	—
Panoramic glass sunroof, electrically slide and tilt adjustable with integrated wind deflector and sunblind				
Sound & Vision package				
Harman Kardon 480W premium audio system with 8 speakers, centre speaker, subwoofer and 12-channel amplifier	—	0	0	0
Head up display				
Sunroof				
Panoramic glass sunroof, electrically slide and tilt adjustable with integrated wind deflector and sunblind	—	—	0	—
Luxury package				
Active climate seats in front, heated and ventilated				
Electric adjustment for driver's seat with 3 position memory function				
Heated steering wheel				
Lumbar adjustment for driver's seat, electrically adjustable				
Memory function for exterior mirrors	—	—	—	0
Panoramic glass sunroof, electrically slide and tilt adjustable with integrated wind deflector and sunblind				
Vienna leather appointed seat upholstery with red decorative stitching				
Leather appointed seats has a combination of genuine and artificial leather, but are not wholly leather				





Overseas model shown. Local specifications may vary.

Golf, Golf Life & Golf R-Line - Colours and Upholstery



Candy White



Deep Black PE



Dolphin Grey M



Reflex Silver M
(Excluding R-Line)



Atlantic Blue M



Pomello Yellow PM



Moonstone Grey P
(R-Line)



Golf - Standard Seats
Cloth



Golf Life - Comfort Seats
Comfort cloth



Golf Life - Comfort sport seats (Optional)
Microfleece-cloth



Golf Life - R-Line
Sports cloth-Microfleece

Please note that Metallic, Pearl Effect, Premium and Premium Metallic paint are optional at extra cost. The print process does not allow for exact reproduction of the exterior or the upholstery colours. Please contact your Volkswagen Dealer for further information on colours and upholstery combinations.

Golf GTI - Colours and Upholstery



Pure White



Deep Black PE



Dolphin Grey M



Moonstone Grey P



Atlantic Blue M



Kings Red PM



'Scale Paper' Black/Red
Sports cloth seat upholstery



Black Vienna
Leather appointed seat upholstery[#]

[#]Leather appointed seats have a combination of genuine and artificial leather, but are not wholly leather.

Please note that Metallic, Pearl Effect, Premium and Premium Metallic paint are optional at extra cost. The print process does not allow for exact reproduction of the exterior or the upholstery colours.

Please contact your Volkswagen Dealer for further information on colours and upholstery combinations.

Technical Specifications

	Golf Golf Life Golf R-Line		Golf GTI
Engine	1.4 litre TSI		2.0 litre TSI
Type	4 cylinder inline turbocharged direct injection petrol with engine Start/Stop system*		4 cylinder inline turbocharged direct injection petrol with engine Start/Stop system*
Installation	Front transverse		Front transverse
Max power, kW @ rpm	110 @ 5000		180 @ 5000 - 6200
Max torque, Nm @ rpm	250 @ 1500 - 4000		370 @ 1600 - 4300
Fuel type (Recommended)	Premium unleaded 95 RON minimum		Premium unleaded 95 RON minimum
Transmission	6 speed Manual^	8 Speed Automatic with sport mode	7 Speed Direct Shift Gearbox (DSG) with sport mode
Driven wheels	Front wheel drive	Front wheel drive	Front wheel drive
Performance			
0 – 100 km/h, seconds	8.3	8.5	6.3
Fuel Consumption **			
Combined, L/100km	6.0	5.8	7.0
Urban, L/100km	7.6	7.2	9.3
Extra Urban, L/100km	5.0	5.0	5.6
CO ₂ emission g/km~	136	135	159
Fuel tank capacity litres	50	50	50
Weight			
Tare Mass kg's	1270	1304	1409
Suspension			
Front Axle	Independent, MacPherson struts with lower A-arms. Anti-roll bar. Sports suspension (R-Line)		Independent, MacPherson struts with lower A-arms. Anti-roll bar. Lowered sports suspension with Adaptive Chassis Control.
Rear Axle	Independent, four-link with coil springs. Anti-roll bar. Sports suspension (R-Line)		Independent, four-link with coil springs. Anti-roll bar. Lowered sports suspension with Adaptive Chassis Control.
Steering	Electro-mechanical power assisted rack & pinion steering. Progressive steering (R-Line).		Electro-mechanical power assisted rack & pinion steering. Progressive steering.
Turning Circle (m)	10.9		10.9
Brakes			
Front	Ventilated discs		Ventilated discs
Rear	Discs		Ventilated discs
Brake Systems	Anti-lock Braking System (ABS) with Electronic Brake-pressure Distribution (EBD), Brake Assist and Electronic Stabilisation Program (ESP). Brake energy recuperation.		Anti-lock Braking System (ABS) with Electronic Brake-pressure Distribution (EBD), Brake Assist and Electronic Stabilisation Program (ESP). Brake energy recuperation.
Exterior Dimensions			
Overall length mm	4284		4287
Width mm	1789		1789
Height mm	1456		1463
Wheelbase mm	2636		2631
Luggage area volume			
Rear seat upright L	381		381
Rear seat folded L	1237		1237

~ Emission level according to European Regulation (EC) No. 715/2007 and Regulation (EC) No. 692/2008

*The Start/Stop system is designed to reduce fuel consumption and CO₂ emissions. It achieves this by automatically switching off the engine while the vehicle is stationary and then starting it again automatically when the driver wants to drive off. There are certain operating conditions where the Start/Stop system is deactivated (e.g. during engine warm-up), please refer to the owner's manual for full operating information.

^The 6 speed manual transmission is only available with the Golf model grade.

**Fuel consumption figures according to ADR 81/02 derived from laboratory testing. Factors including but not limited to driving style, road and traffic conditions, environmental influences, vehicle condition and accessories fitted, will in practice in the real world lead to figures which generally differ from those advertised. Advertised figures are meant for comparison amongst vehicles only.



Overseas model shown. Local specifications may vary.

Golf Range

Volkswagen Group Australia Pty Ltd
24 Muir Road Chullora NSW 2190
ABN 14 093 117 876

Printed in Australia
March 2021

Publication: VWPGOLPRANSPMY21

Important Information

Apple CarPlay® is a registered trade mark of Apple Inc. Android Auto™ is a registered trade mark of Google Inc. Bluetooth® is a registered trade mark of Bluetooth SIG Inc.

Volkswagen is distributed by Volkswagen Group Australia Pty Ltd (ABN 14 093 117 876) of 24 Muir Road Chullora, NSW 2190. Specifications are as planned at March 2021, for Model Year 2021 and are subject to change without notice or obligation. All information in this specification sheet is correct at the time of publication, however variations may occur from time to time and Volkswagen, in so far as it is permitted by law to do so, shall not be liable in any way as a result of any reliance by any person on anything contained in this brochure sheet. Authorised Volkswagen Dealers will provide up-to-date information on model application, design feature, prices, and availability on request.

Your Volkswagen dealer.