



NISSAN

JUKE





THE JUKE, COUPE CROSSOVER catches the eye from any angle. Its dynamic, sports-inspired design and coupé styling make a powerful statement wherever it goes. Advanced technology – keeps you in control, connected and entertained for thrilling urban adventures.



TECHNOLOGY THAT'S GOT YOUR BACK.

The JUKE gives you a better ride through life, with advanced Nissan Intelligent Mobility technology giving you more confidence and more connection to the world around you.



LED Headlights

LED tail lights

Bold styling

Floating roof

CATCH EVERY EYE

Every detail of the JUKE's exterior is made to be looked at. Inspired by the dynamic boldness of the original JUKE and Nissan sporting heritage, its coupé crossover style was created to turn heads. With the 19" alloys* it brings a strong stance, to make a statement that you've arrived.

*ST-L/TI models only - TI model shown.



LARGE, CLEAR TFT* INSTRUMENT PANEL

The JUKE's Advanced Drive-Assist Display puts the information you need right where you need it.



FIND YOUR PASSION

The JUKE's interior is designed around you - with high-quality finishes, ergonomic controls and ambient lighting designed to put you in the mood for driving. The intuitive, layered cockpit design keeps you safe, in control and ready to enjoy the ride.

Generous legroom

Ambient light*

Generous glove box

Storage for big water bottles

D-Shape Steering Wheel

Large touch screens

Smart grouping of commands

Soft-touch materials and silver finishings*

*Not available on all grades



**REAR CROSS
TRAFFIC ALERT***

Avoid collisions with
rearward approaching
vehicles when reversing

*Driver's aid only and should not be used as a
substitute for safe driving practices. Always
monitor your surroundings when driving.



INTELLIGENT AROUND VIEW MONITOR*

PARK LIKE A PRO

If you hate parking, you'll love the JUKE. The Intelligent Around View Monitor
gives you a 360° view of your car, with selectable focus on the front, rear and kerbside view
to help you park with confidence and control.

REAR CAMERA

See what's right
behind you.

LEFT SIDE CAMERA

Flick the switch
to see the kerb.

ALL-AROUND VIEW

Get a virtual 360° birds'
eye view as you
manoeuvre.

FRONT CAMERA

Get a combined front
and overhead view for
perfect parking.

*Not available on all grades.

A SMARTER ROAD AHEAD.

The JUKE is packed with intelligent driving technologies* designed to help you move through life with more confidence, more excitement and more connection with the world around you.



INTELLIGENT EMERGENCY BRAKING WITH PEDESTRIAN AND CYCLIST DETECTION

Brakes to reduce low-speed collisions with vehicles, pedestrians or cyclists.



TRAFFIC SIGN RECOGNITION

Keeps you up to date with the latest speed limit by detecting road signs as you go.



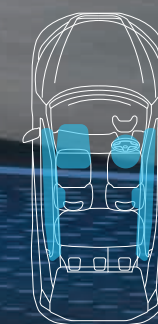
INTELLIGENT LANE INTERVENTION

On freeways and highways Intelligent Lane Intervention can gently brake to help guide you back into lane if it detects that you've unintentionally strayed for too long.



HIGH BEAM ASSIST

High Beam Assist helps out with night vision without blinding your fellow drivers. It automatically turns on the high beam headlights when you need them and switches to low beam when it detects a vehicle ahead.



6 STANDARD AIR BAGS

When a collision is unavoidable, Nissan's Zone Body Construction helps absorb the impact, while the advanced seat belt and air bag systems help protect passengers.

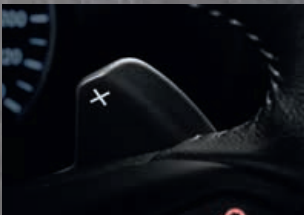


A SMILE ON YOUR FACE

The JUKE handles like a dream with the responsiveness of its lightweight turbocharged engine and quick reaction shifting. Combining the added technologies with the rigid, ultra-high strength steel chassis with the sporty steering and suspension will maximise precision and control.



STANDARD MODE/ ECO MODE/SPORT MODE.** Select ECO for enhanced fuel efficiency, Standard for the best balance between fuel efficiency and performance, or Sport for maximum thrills.



PADDLE SHIFT. Responsive paddle gear change for a more fun, and engaging driving experience.



DUAL CLUTCH TRANSMISSION. Automatic 7-speed DCT for smooth, quick changes.



INTELLIGENT TRACE CONTROL.
Keeps you on the right line by applying the brakes to each wheel independently.



INTELLIGENT RIDE CONTROL.
Delivers a smoother drive by controlling the engine and brakes to avoid pitching when accelerating and driving over bumps.

ENGINE	FUEL	OUTPUT (kW/Nm)	AXLE	TRANSMISSION
1.0L DIG-Turbocharged	PETROL	84kW / 180Nm	FRONT	7-SPEED AUTOMATIC DCT

For the engine performance data such as CO₂ emission and fuel consumption, please refer to model technical data sheet provided with this brochure and in the dealership.

*You should not rely solely on driver convenience features. Some features may not work in all conditions and circumstances. Speed and other limitations apply. For terms and conditions relating to Nissan technologies, please contact your Nissan dealer or www.nissan.com.au
**Not available on all grades.

INTELLIGENT. INTUITIVE. INFORMED.

When inside your car, connect your phone to start using your preferred apps thanks to Apple CarPlay® and Android Auto.



MAPS & LIVE TRAFFIC*
Get real-time traffic information, that helps you plan smarter ways round congestion or accidents so you can plan every journey better.



APPLE CARPLAY® & ANDROID AUTO
Plug your smartphone in and access all the things you love such as your music and text messages while you are driving.*

YOUR MUSIC. YOUR WAY

Use Bluetooth streaming audio or the USB input to play music directly from your smartphone.



*Connecting a mobile phone should only be done when the car is parked safely. Use of the system should always be in accordance with the Australia Road Rules. Drivers should only use the system when it is safe to do so. Users should be aware of the potential for hands-free technology to distract attention from the road, which could impact on having full control of the vehicle. Functionality and compatibility will vary depending on the device. CarPlay is a trademark of Apple Inc. Android Auto is a trademark of Google LLC. *Not available on all grades

CHOOSE YOUR PREFERRED
LEVEL OF IMMERSION WITH BOSE®
PERSONALSPACE™ CONTROL*:



FORWARD FRONTAL STAGE

For incredible clarity and depth.
Like the bands are performing
just for you.



SOUND IMMERSION

Take your music to the next level
with a wider, more surrounding
experience.

SOUNDTRACK YOUR ADVENTURE

Feel every curve, every straight. Every beat. The JUKE offers premium connected audio including Bose® Personal® Plus* audio. The comfortable, ergonomic monoform sports seats feature Inbuilt headrest speakers for driver and passenger. They bring you even closer to the music, allowing you to customise for the music, your mood and more.

*Available on ST-L+ and Ti Models only



ENERGISE YOUR INTERIOR

The Nissan JUKE is designed to be different. Be true to you and stand out from the crowd with the Energy Orange interior available on the JUKE TI.

Ti model shown with Energy Orange interior

ST



ST features:

- Rear spoiler
- LED Daytime running lights
- 17" alloys
- Heated and auto-fold door mirrors
- Automatic LED headlights with High Beam Assist
- Pearl Black power-adjustable door mirrors with integrated indicators
- LED rear taillights
- Paddle shifters
- Air conditioning
- 8" colour touchscreen
- Front USB charging/audio input port
- Bluetooth® audio/handsfree phone system
- Apple CarPlay® and Android Auto®*
- Voice recognition
- 4 speakers
- Monoform cloth seats
- 6-way manual-adjustable driver seat
- Metallic grey centre console
- Idle Stop/Start
- Jack knife key
- 4.2" Advanced Drive-Assist® Display / TFT
- Rearview Camera with Predictive path
- Rear parking sensors
- Alarm
- Forward Collision Warning
- Intelligent Emergency Braking with Pedestrian and Cyclist Detection
- Lane Departure Warning
- Intelligent Lane Intervention
- Traffic Sign Recognition
- Active Speed Limiter
- Blind Spot Warning
- Rear Cross Traffic Alert
- Intelligent Driver Alert
- Emergency Stop Signal
- Hill Start Assist
- Intelligent Trace & Ride Control

ST+



ST+ includes ST features plus/or:

- LED Fog lights
- Auto air-conditioning
- Satellite navigation with live traffic monitoring
- Digital radio (DAB+)
- Heated front seats
- Front parking sensors

ST-L/ST-L+



ST-L model shown

ST-L includes ST+ features plus/or:

- 19" alloys
- Rear solid disc brakes
- 6 speakers
- Auto-dimming rearview mirror
- Rain-sensing front wipers
- Dimmable Ambient Lighting (Gear console and door trim)
- Electric Park Brake with Auto Hold Function
- Intelligent Key® with push button engine start
- Black part cloth/part leather-accented[^] monoform seats
- Leather-accented[^] steering wheel and shifter
- 7" Advanced Drive-Assist® Display / TFT
- Rear USB charging port
- Drive Mode Selector (Sport/Standard/Eco)
- Intelligent Around View® Monitor with Moving Object Detection
- Intelligent Cruise Control

ST-L+ includes ST-L features plus/or:

- Black part cloth/part white and black leather-accented[^] monoform seats
- White leather-accented[^] dashboard, knee pad, door trim and front armrest
- Black chrome driver and front passenger headrest finisher
- Black chrome centre console and front door trim
- 8 speaker Bose® Personal® Plus with headrest audio (driver and front passenger)

Ti



Ti includes ST-L features plus/or:

- 19" Akari alloy wheels
- Privacy glass (2nd row, rear)
- Pearl Black Shark Fin Antenna
- Black quilted leather-accented[^] and Alcantara® monoform seats
- Black Alcantara® dashboard, knee pad, door trim and front armrest
- Black leather-accented[^] soft pad meter visor
- Black chrome centre console, front door trim and front passenger headrest finisher
- 8 speaker Bose® Personal® Plus with headrest audio (driver and front passenger)
- Illuminated JUKE entry kick plates
- Tyre Pressure Monitoring System (TPMS)
- Follow me home headlights

Ti Energy Orange Interior (optional):

- Black and orange leather-accented[^] monoform seats
- Orange leather-accented[^] dashboard, knee pad, door trim and front armrest

[^]Leather-accented features and upholstery may contain synthetic material.

CHOOSE YOUR COLOUR



Fuji Sunset Red (M) - NBV

Ivory Pearl (P) - QAB*



Burgundy (M) - NBQ**



Platinum (M) - KYO*



Gun Metallic (M) - KAD*



Pearl Black (M) - Z11*



Vivid Blue (M) - RCA**

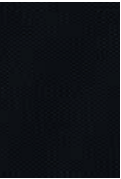


Arctic White (S) - 326**

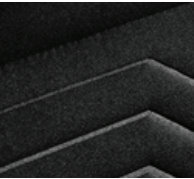
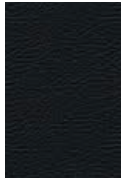
CHOOSE YOUR TRIM



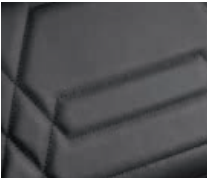
ST and ST+
Black embossed fabric / black fabric



ST-L
Black part fabric and part leather-
accented*



ST-L+
Black part cloth/part white and black
leather-accented*



Ti STANDARD
Black quilted leather-accented* and
black Alcantara®



WHEELS



ST & ST+ only
17" Alloy Wheel



ST-L & ST-L+ only
19" Alloy Wheel



Ti only
19" Alloy Wheel

DIMENSIONS

A Wheelbase: 2,636 MM
B Overall length: 4,210 MM
C Overall width: 1,800 MM
D Overall height: 1,595 MM
Boot capacity: 422L



Ti STANDARD
Black quilted leather-accented* and
black Alcantara®



Ti OPTIONAL (Energy Orange)
Black and orange leather-accented*

A complete ownership experience to help you get the most out of your Nissan. It includes the following:

NISSAN CAPPED PRICE SERVICE

All Nissan vehicles first registered from 1 January 2018 are eligible for Nissan Capped Price Service*. As part of this servicing program, we've capped the maximum price you'll pay for the first six services according to your vehicle's service schedule.*

5 YEAR/UNLIMITED
KILOMETRE WARRANTY

Receive assurance with a 5 year/
unlimited kilometre warranty.*

5 YEARS ROADSIDE ASSISTANCE

No matter where you're planning to journey, you'll have the peace of mind of knowing that if you lock your keys in the car, have a flat tyre or battery, or run out of fuel, we'll help get you back on the road at no charge†.

FACTORY-TRAINED TECHNICIANS

Using dedicated diagnostic equipment and Nissan Genuine Parts they'll keep your vehicle in top condition.

NISSAN GENUINE ACCESSORIES

Your Nissan Dealer can show you a variety of Nissan Genuine Accessories to protect, enhance and personalise your Nissan JUKE.

FINANCIAL SERVICES

Choose from a range of finance options at very competitive rates and terms, as well as various insurance solutions to protect you and your vehicle.

In some cases, the printed colours may vary from the actual paint colours.

*Premium paint available at extra cost. *Not available on ST-L+ or Ti models **Not available on Ti with Energy Orange interior

*Ask your Nissan Dealer to explain exactly what items are covered in each Scheduled Service. Applies for up to 6 years/120,000km (whichever occurs first). Some exclusions apply. Ask your Nissan Dealer or visit nissan.com.au/service to find out more and for full terms and conditions. *New Vehicle Warranty expires 60 months from date of first registration. Conditions apply. See nissan.com.au for more details. NOTE: Our goods come with guarantees that cannot be excluded under the Australian Consumer Law. You are entitled to a replacement or refund for a major failure and compensation for any other reasonably foreseeable loss or damage. You are also entitled to have the goods repaired or replaced if goods fail to be of acceptable quality and the failure does not amount to a major failure. +Leather accented features and upholstery may contain synthetic material. †Terms and conditions apply, please visit nissan.com.au/roadsideassistance

SPECIFICATIONS

	ST	ST+	ST-L	ST-L+	TI
Engine					
HR10DDT - 1.0 litre DOHC Turbocharged in-line 3-cylinder, 4 valves per cylinder	●	●	●	●	●
Power - 84 kW @ 5,250 rpm / Torque - 180 Nm @ 2,400 rpm					
Direct Injection Gasoline - Turbocharged (DIG-T)	●	●	●	●	●
Idle Stop/Start	●	●	●	●	●

Drivetrain					
Front engine/Front-wheel Drive	●	●	●	●	●
7-Speed Dual Clutch Transmission (DCT) Automatic	●	●	●	●	●

Brakes					
Anti-lock Braking System (ABS)	●	●	●	●	●
Electronic Brakeforce Distribution	●	●	●	●	●
Electronic Stability Programme	●	●	●	●	●
Brake Assist	●	●	●	●	●
Hill Start Assist	●	●	●	●	●
Intelligent Trace Control	●	●	●	●	●
Intelligent Ride Control	●	●	●	●	●
Front ventilated disc brakes	●	●	●	●	●
Rear drum brakes	●	●			
Rear solid disc brakes			●	●	●
Electric Park Brake with Auto Hold Function			●	●	●

Suspension/Steering					
MacPherson strut front suspension	●	●	●	●	●
Twist beam coil spring rear suspension	●	●	●	●	●
Front and rear stabiliser bars	●	●	●	●	●

Wheels/Tyres					
17" x 70" alloy wheels	●	●			
P215/60 R17 tyres	●	●			
19" x 75" alloy wheels			●	●	
19" x 75" Akari alloy wheels					●
P225/45 R19 tyres			●	●	●
Temporary Wheel	●	●	●	●	●

Exterior Features					
LED Daytime Running Lights	●	●	●	●	●
LED rear taillights	●	●	●	●	●
Pearl Black rear spoiler	●	●	●	●	●
Body coloured outside door handles	●	●	●	●	●
Pearl Black power-adjustable door mirrors with integrated indicators	●	●	●	●	●
Automatic LED headlights with High Beam Assist	●	●	●	●	●
Heated and auto-fold door mirrors	●	●	●	●	●
LED Fog lights		●	●	●	●
Privacy glass (2nd row, rear)					●
Pearl Black Shark Fin Antenna					●

	ST	ST+	ST-L	ST-L+	TI
Comfort/Convenience					
8" colour touch-screen display	●	●	●	●	●
Bluetooth® handfree phone system	●	●	●	●	●
Multi-function D-shape Steering Wheel	●	●	●	●	●
Steering wheel mounted Gearshift Paddles	●	●	●	●	●
Rear parking sensors	●	●	●	●	●
Speed-sensitive variable intermittent windshield wipers	●	●	●	●	●
12V power outlets (x1)	●	●	●	●	●
Cup holders (x2) and bottle holders (x4)	●	●	●	●	●
Tilt and telescopic steering adjustment	●	●	●	●	●
Welcome light	●	●	●	●	●
Cabin light - front and rear	●	●	●	●	●
Rear Luggage hooks (x2)	●	●	●	●	●
Luggage space light	●	●	●	●	●
Cruise control	●	●	●	●	●
Rearview camera with Predictive Path	●	●	●	●	●
Front and rear electric windows with One Touch Driver window control	●	●			
Driver and passenger sun visor with vanity mirror	●	●			
Jack knife key	●	●			
4.2" Advanced Drive-Assist® Display/TFT	●	●			
Air-conditioning	●				
Satellite navigation with live traffic monitoring		●	●	●	●
Auto air-conditioning		●	●	●	●
Front parking sensors		●	●	●	●
Front and rear electric windows with One Touch Driver and Passenger window control			●	●	●
Driver and Passenger seat back pockets			●	●	●
Driver and passenger sun visor with Illuminated vanity mirror			●	●	●
Intelligent Key® with push button engine start			●	●	●
Rain-sensing front wipers			●	●	●
Intelligent Around View® Monitor with Moving Object Detection			●	●	●
Auto-dimming rearview mirror			●	●	●
Intelligent Cruise Control			●	●	●
7" Advanced Drive-Assist® Display / TFT			●	●	●
Drive Mode Selector (Sport/Standard/Eco)			●	●	●
Follow me home headlights					●
Illuminated JUKE entry kick plates					●

Seating/Appointments					
6-way manual adjustable driver seat	●	●	●	●	●
4-way manual adjustable front passenger seat	●	●	●	●	●
Adjustable rear headrests	●	●	●	●	●
Black headliner	●	●	●	●	●
60/40 split folding 2nd-row seat	●	●	●	●	●
Interior chrome door handles	●	●	●	●	●
Carbon fibre look instrument cluster and speaker surrounds	●	●	●	●	●
Leather-accented* shift knob and gear shift boot	●	●	●	●	●
Metallic grey centre console and front door trim	●	●	●	●	
Monoform black cloth seats	●	●			
Heated front seats			●	●	●
Black leather-accented* soft pad meter visor			●	●	●

	ST	ST+	ST-L	ST-L+	TI
Leather-accented* steering wheel			●	●	●
Dimmable Ambient Lighting (Gear console and door trim)			●	●	●
Driver and front passenger seat pockets			●	●	●
Driver and front passenger seat headrest diamond shape cutout			●	●	●
Black part cloth/part leather-accented* monoform seats			●		
Grey leather-accented* dashboard, knee pad, door trim and front armrest			●		
Black part cloth/part white and black leather-accented* monoform seats				●	
White leather-accented* dashboard, knee pad, door trim and front armrest				●	
Black chrome driver and front passenger headrest finisher				●	●
Black chrome centre console and front door trim				●	●
Black quilted leather-accented* and Alcantara® monoform seats					●
Black Alcantara® dashboard, knee pad, door trim and front armrest					●
Black and orange leather-accented* monoform seats					○
Orange leather-accented* dashboard, knee pad, door trim and front armrest					○

Audio/Entertainment					
Apple CarPlay® & Android Auto	●	●	●	●	●
Voice Recognition	●	●	●	●	●
AM/FM/AUX audio system	●	●	●	●	●
Bluetooth® audio streaming	●	●	●	●	●
Digital radio (DAB+)		●	●	●	●
Front USB charging/Audio input port	●	●	●	●	●
Rear USB charging port			●	●	●
4 speakers	●	●			
6 speakers			●		
8 speaker Bose® Personal® Plus with headrest audio (driver and front passenger)				●	●

Safety/Security					
Driver and front passenger front impact SRS airbags	●	●	●	●	●
Driver and front passenger side impact SRS airbags	●	●	●	●	●
Front to rear SRS curtain airbags	●	●	●	●	●
Vehicle Dynamic Control with Traction Control System	●	●	●	●	●
3-point Emergency Locking Retractor front and rear seatbelts	●	●	●	●	●
Child restraint anchorage (RH/LH isofix + tether and centre tether)	●	●	●	●	●
Height adjustable front seat belts	●	●	●	●	●
Seatbelt reminder (front and rear)	●	●	●	●	●
Alarm	●	●	●	●	●
Intelligent Emergency Braking^ with Pedestrian & Cyclist Detection	●	●		●	●
Forward-Collision Warning^	●	●	●	●	●
Lane Departure Warning^	●	●	●	●	●
Blind Spot Warning^	●	●	●	●	●
Rear Cross Traffic Alert^	●	●	●	●	●
Intelligent Driver Alert^	●	●	●	●	●
Active Speed Limiter	●	●	●	●	●
Emergency Stop Signal	●	●	●	●	●
Traffic Sign Recognition	●	●	●	●	●

	ST	ST+	ST-L	ST-L+	TI
Intelligent Lane Intervention^	●	●	●	●	●
Tyre Pressure Monitoring System (TPMS)					●

Dimensions (mm)	
Exterior	
Overall length	4,210
Overall width (without mirrors)	1,800
Overall height	1,595
Wheelbase	2,636
Track width (unladen) - front/rear	1,561/1,555
Ground clearance (minimum)	172
Turning circle (m)	11
Interior (1st/2nd row)	
Head room (front/rear)	996/948
Leg room (front/rear)	1,049/843
Shoulder room (front/rear)	1,357/1,320

Capacities	
Seating capacity	5
Cargo capacity with 2nd row upright (litres)	422
Cargo capacity with 2nd row folded (litres)	1,305
Fuel tank (litres)	46
Maximum towing capacity - braked (kg)	1,250
Maximum towing capacity - unbraked (kg)	648

Weights (kg)		
Kerb weight - manual / CVT	1,251	1,274
Gross vehicle mass - manual / CVT	1,730	

Fuel Economy	
Fuel consumption (L/100km)	6
CO2 emission (g/km)	136
Recommended Fuel type	95RON

●	Standard	○	Optional		Not available
---	----------	---	----------	--	---------------

Please visit www.nissan.com.au/JukeSpecSheet for the full list of specifications.



For more information please visit nissan.com.au/owners, ask your Nissan Dealer or phone 1800 035 035 during normal AEST business hours.

All illustrations, information and specifications presented and referred to in this brochure were correct at the time this brochure was approved for printing. The colours in the photographs may vary from actual colours. Nissan Motor Co (Australia) Pty. Ltd. may at its discretion at anytime and without prior notice discontinue or change the models, features, specifications, designs and prices of the products referred to in this brochure and any optional equipment without incurring any liability whatsoever to any purchaser or prospective purchaser of any such products. Always consult your Nissan Dealer for the latest information on models, specifications, features, prices, options and availability. Nissan Motor Co (Australia) Pty. Ltd. ACN 004 663 156. Updated November 2020. JUK0167



Nissan Intelligent Mobility guides everything we do. At Nissan, we use new technologies to transform cars from mere transportation. Together the journey is more confident, connected, and exciting. Whether it is cars that share the task of driving or highways that charge your EV as you go along, it's all in the very near future. And it's a future already taking shape in the Nissan you drive today.



Follow us
@Nissan_Aus



Like us
Nissan Australia



Check out
NissanAustralia

nissan.com.au