

Tucson.





Ready when you are.

We have one goal – to be Australia's most loved car company. To get there, we're driven by the simple philosophy that life's most incredible moments shouldn't be reserved for a select few, and everyone should be able to experience an exciting and enjoyable drive.

So, how do we make that happen? We start by pushing our own boundaries, by making premium the new standard, and by engineering the most enjoyable ride possible.

As a medium SUV, the Tucson effortlessly serves many purposes. It looks great, has enough space for growing families, and navigates city streets with ease. It's also the perfect partner for the activities we fill our time with. Whether it's a meeting across town, a lunch date with friends, the morning school run, or a weekend at the beach, the Tucson achieves a seamless balance between style and function.

We've put it through its paces, too. Our extensive local tuning program has seen the Tucson challenge, and overcome, the harshest conditions Australia can throw at it.



Tucson.

All eyes on safety.

Safety should never be an afterthought, or an added extra, which is why Hyundai takes their commitment to safety seriously.

The Tucson is an urban SUV, with the heart of an explorer. But no matter where the road takes you, it has some of the most advanced safety technology available to help keep you protected. That includes front and rear fog lights, Hyundai SmartSense™¹ safety features and a rear view camera to make safe reversing easy.

Hyundai SmartSense™¹ is our suite of intelligent safety features that all have one thing in common - they've been developed to help alert you to (and avoid) any dangers around you. From alerting you to approaching objects and potential collisions, to helping you stay aware of what's happening in your blind spots, Hyundai SmartSense™¹ provides peace of mind for you, and for us.

Exclusive to the Tucson Special Edition, it features a Surround View Monitor which gives drivers a 360 degree bird's eye view of the car on the multimedia touchscreen - perfect for parking in tight spots.



Rear view camera²



Surround View Monitor (SVM)³



5 star ANCAP safety rating



Hyundai SmartSense™¹



Blind-Spot Collision Warning (BCW)

When driving at a speed of 30km/h or higher, the BCW function will alert the driver to vehicles that enter the blind spot, including during lane changes. If the driver proceeds to activate the corresponding indicator lights, a flashing visual warning is provided and an audible alert is sounded.



Smart Cruise Control (SCC) with Stop & Go

Detects the speed and distance of vehicles ahead of the Tucson and maintains a safe distance to the vehicle ahead, up to a pre-set speed (between 30km/h - 180km/h). The Stop & Go function works in stop/start traffic, bringing the vehicle to a stop when appropriate, and automatically (if within 3 seconds) accelerate back up to the original set speed.



Rear Cross-Traffic Collision Warning (RCCW)

Using the BCW system's radar sensors, at speeds below 10 km/h, the Rear Cross-Traffic Collision Warning (RCCW) monitors for traffic approaching on either side of Tucson when reversing out of perpendicular parking spaces. Should RCCW detect a vehicle approaching, an audible warning will sound, with a visual warning displayed on the dash cluster.



High Beam Assist (HBA)

High Beam Assist (HBA) scans the road ahead of Tucson, monitoring for street lights as well as any other lights, including headlights of oncoming vehicles as well as taillights of vehicles in front. Upon detection the system automatically adjusts headlamp range, switching between high and low beam.

¹Hyundai SmartSense™ is a registered trademark of Hyundai Motor Company. Safety features are not a substitute for attentive driving. Available on the Go with SmartSense™ safety pack, Active X with SmartSense™ safety pack, Elite, Special Edition & Highlander variants.

²Highlander variant shown.

³Available on the Special Edition.

Stylish design.

The Tucson is at home anywhere. So, whether you're dropping the kids off at school, meeting friends for coffee, or on the daily commute, the Tucson always looks fantastic, and always works hard.

The Tucson adopts Hyundai's signature cascading front grille exuding class and sophistication wherever it goes. Be seen day and night with LED daytime running lights positioned below the headlights for extra flair.

Stylish, sleek & practical - the Tucson is your perfect medium SUV for whatever the journey.



Top: LED daytime running lights and headlights¹
Bottom: Cascading front grille¹



Top: LED combination lights²
Bottom: Alloy wheels¹



¹ Highlander variant shown.
² Available on the Highlander variant.



Interior elegance.

For a 5 seater SUV, the Tucson is surprisingly spacious. Our engineers have optimised every inch of the interior in order to give you and your passengers a more comfortable ride, without losing any storage room.

The interior is inviting too, with soft touch surfaces like leather appointed¹ seats that exude style and sophistication. Heated and air ventilated front seats², dual zone climate control⁶ and a panoramic glass sunroof² complete the look and give you that extra sense of luxury, while connecting you and your passengers with the outside, from within.

With a spacious interior, Apple CarPlay™⁴ & Android™ Auto⁴ compatibility and a USB charging port³ in the rear centre console ensures all your passengers can enjoy these creature comforts to keep them entertained and comfortable.

The Tucson really is a premium vehicle for everyday life.



Top: Heated and air ventilated front seats²
Bottom: Dual zone climate control⁶

Top: Rear USB port⁵
Bottom: Panoramic glass sunroof²

¹ Finishes specified as leather may contain elements of genuine leather, polyurethane leather (leather substitute) or man-made materials, or a combination thereof. Available on the Active X, Elite, Special Edition & Highlander variants.

² Available on the Highlander variant.

³ Available on the Active X, Elite, Special Edition & Highlander variants.

⁴ Apple CarPlay™ functionality requires software update. Apple Carplay™ requires iPhone 5® or subsequent model (lightning cable) in order to operate. iPhone® is a registered trademark of Apple Inc. Android™ Auto requires a device with Android 5.0 operating system or subsequent version, and USB cable in order to operate. Android is a trademark of Google Inc.

⁵ Highlander variant shown.

⁶ Available on the Go with SmartSense™ safety pack, Active X with SmartSense™ safety pack, Elite, Special Edition & Highlander variants.



2.0 GDi 2WD

122 Maximum Power
kW/6,200 rpm

205 Maximum Torque
Nm/4,000 rpm

1.6 T-GDi AWD

130 Maximum Power
kW/5,500 rpm

265 Maximum Torque
Nm/1,500 – 4,500 rpm

2.0 CRDi AWD

136 Maximum Power
kW/4,000 rpm

400 Maximum Torque
Nm/1,750 – 2,750 rpm

Powerful performance.

The Tucson's performance is a testament to the work our designers and engineers put in every day to deliver a more enjoyable and practical ride. Depending on the variant you choose, the Tucson is available with three powerful engines to suit your lifestyle - the 2.0 GDi petrol¹, 1.6 T-GDi petrol² and 2.0 CRDi diesel engine³.

Exclusive to the R series 2.0 diesel engine, is the 8-speed automatic transmission which offers smoother gear shifts, greater fuel efficiency and has a faster, more responsive shift logic.

We've even taken Hyundai's commitment to research and development one step further. Thanks to our extensive local tuning program, we've rigorously tested and optimised the Tucson for Australian roads.

By recruiting the finest engineers and designers, and investing billions of dollars each year, we've made a firm commitment to the future of motoring in Australia.



8-speed automatic⁴

¹ Available on the Go and Active X variants in both manual and auto transmissions, Elite variant in auto transmission only.

² Available on the Elite, Special Edition & Highlander variants.

³ Available on the Go, Active X, Elite, Special Edition & Highlander variants in automatic transmissions.

⁴ Available on the 2.0 CRDi diesel engine.

A smarter SUV.

The Tucson understands how busy modern lives can be, and plays an active role in keeping you connected, not just to the road but also to the world around you.

We've seamlessly integrated Apple CarPlay™¹ and Android™ Auto¹ into the vehicle. This means you can safely play music, make calls or get directions while on the move.

The Tucson's impressive technology extends all the way to the boot of the car with the smart tailgate². When standing within a metre of your boot with your proximity key for more than three seconds, it will automatically open for you. Gone are the days when your hands are full and struggle to open the boot – the Tucson has your back.

Frustrated with the site of messy cables and cords? The Tucson allows you to charge your smartphone device wirelessly via the smartphone charging pad² located in the front centre console.

A smarter SUV for your everyday drive – the Hyundai Tucson.



Top: Touchscreen with satellite navigation³
Bottom: Wireless smartphone charging²



Top: Smart tailgate²
Bottom: Push button start⁴



¹ Apple CarPlay™ functionality requires software update. Apple Carplay™ requires iPhone 5" or subsequent model (lightning cable) in order to operate. iPhone® is a registered trademark of Apple Inc. Android™ Auto requires a device with Android 5.0 operating system or subsequent version, and USB cable in order to operate. Android is a trademark of Google Inc.
² Available on the Highlander variant.
³ Available on the Active X, Elite, Special Edition & Highlander variants.
⁴ Available on the Elite, Special Edition & Highlander variants.

Variants.

Life is about choice – so we've created four different Tucson variants that will let you take to the road the way you want to.



Go.



Engine and transmission

- 2.0L GDi (Petrol) 2WD (Manual or Auto)
- 2.0L CRDi (Diesel) AWD (Auto)

Key specifications:

Safety

- Emergency Stop Signal (ESS)
- Rear view camera
- Electronic Stability Control (ESC) including:
 - Anti-lock Braking System (ABS)
 - Brake Assist System (BAS)
 - Downhill Brake Control (DBC)
 - Electronic Brakeforce Distribution (EBD)
 - Hill-start Assist Control (HAC)
 - Traction Control System (TCS)
 - Vehicle Stability Management (VSM)

Interior and technology

- 7" touchscreen audio system, 6 speakers and Apple CarPlay™¹ and Android™ Auto¹ compatibility
- Bluetooth®² connectivity
- Steering wheel controls for audio and cruise control
- 60/40 split folding rear seats

Exterior and technology

- 17" steel wheels
- LED Daytime Running Lights (DRL)
- Automatic dusk sensing headlamps with escort and welcome functions
- Roof rails
- Front and rear fog lights

SmartSense™³ Safety Pack (optional)

- Blind-Spot Collision Warning (BCW)
- Driver Attention Warning (DAW)
- Forward Collision-Avoidance Assist (FCA) - Car & pedestrian
- High Beam Assist (HBA)
- Lane Keeping Assist (LKA)
- Rear Cross-Traffic Collision Warning (RCCW)
- Smart Cruise Control (SCC) with Stop & Go
- Dual zone climate control
- Glovebox cooling
- Electronic Park Brake (EPB)



17" steel wheels



Touchscreen with Apple CarPlay™¹ and Android™ Auto¹



Rear view camera



Steering wheel controls

Active X.



Engine and transmission

- 2.0L GDi (Petrol) 2WD (Manual or Auto)
- 2.0L CRDi (Diesel) AWD (Auto)

Key specifications above Go:

Safety

- Tyre pressure monitoring system
- Rear parking assist system

Interior and technology

- Leather appointed⁴ seats
- 8" satellite navigation
- Infinity® 8-speaker premium audio
- Electric lumbar support (2-way)
- Rear USB charging port
- Driver's one touch auto up/down

Exterior and technology

- 17" alloy wheels
- Power folding exterior mirrors
- Heated exterior mirrors

SmartSense™³ Safety Pack (optional)

- Blind-Spot Collision Warning (BCW)
- Driver Attention Warning (DAW)
- Forward Collision-Avoidance Assist (FCA) - Car & pedestrian
- High Beam Assist (HBA)
- Lane Keeping Assist (LKA)
- Rear Cross-Traffic Collision Warning (RCCW)
- Smart Cruise Control (SCC) with Stop & Go
- Dual zone climate control
- Glovebox cooling
- Electronic Park Brake (EPB)



17" alloy wheels



Satellite navigation



Leather appointed⁴ seats



Rear USB charging port

Elite.



Engine and transmission

- 2.0L GDi (Petrol) 2WD (Auto)
- 1.6L Turbo GDi (Petrol) AWD (DCT)
- 2.0L CRDi (Diesel) AWD (Auto)

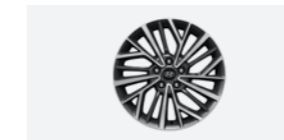
Key specifications above Active X:

Interior and technology

- Smart key with push button start
- Privacy glass
- Luggage net
- Dual zone climate control with auto defog function
- Electrically adjusted driver's seat (10-way including 2-way lumbar)

Exterior and technology

- 18" alloy wheels
- Rain sensing wipers
- Alloy garnish on power window switches
- Chrome exterior door handles
- Matte grey side garnish insert



18" alloy wheels



Push button start



Dual zone climate control with auto defog



Electronic Park Brake (EPB)

Highlander.



Engine and transmission

- 1.6L Turbo GDi (Petrol) AWD (DCT)
- 2.0L CRDi (Diesel) AWD (Auto)

Key specifications above Elite:

Safety

- Front parking assist system

Interior and technology

- Panoramic glass sunroof
- Heated & air ventilated front seats
- Heated steering wheel
- Hyundai Auto Link Premium
- Wireless charging pad⁵
- 4.2" supervision cluster
- Electro-chromatic interior mirror

Exterior and technology

- 19" alloy wheels
- Smart power tailgate
- LED headlights with static bending
- LED rear combination lights
- Dual exhaust
- Matte grey front & rear skid plates



19" alloy wheels



Heated and air ventilated front seats



Panoramic glass sunroof



Wireless smartphone charging⁵

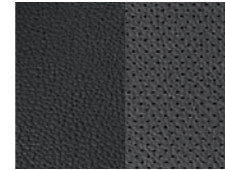
¹Apple CarPlay™ functionality requires software update. Apple CarPlay™ requires iPhone 5® or subsequent model (lightning cable) in order to operate. Apple® and iPhone® are registered trademarks of Apple Inc. ²Android™ Auto requires a device with Android 5.0 operating system or subsequent version, and USB cable in order to operate. Android is a trademark of Google Inc. ³Bluetooth® is a registered trademark of Bluetooth SIG, Inc. Please check your Bluetooth® device's capabilities to ensure compatibility. ⁴Hyundai SmartSense™ is a registered trademark of Hyundai Motor Company. Safety features are not a substitute for attentive driving. ⁵Leather appointed seats means parts of the seats have a combination of genuine and artificial leather, but are not wholly leather. ⁶Wireless smartphone charger requires a Qi-enabled smartphone or adaptor to operate.

Special Edition.

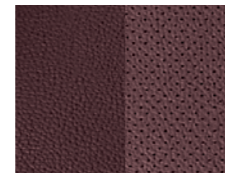
Life is about choice – so we've created a Special Edition Tucson variant that will let you take to the road the way you want to.



Interiors



Black Leather²



Burgundy Leather²

Engine and transmission

- 1.6L Turbo GDi (Petrol) AWD (DCT)
- 2.0L CRDi (Diesel) AWD (Auto)

Key specifications above Elite:

Safety

- Front parking assist system
- Surround View Monitor (SVM)¹
- Trailer Stability Assist¹

Interior and technology

- Electro-chromatic interior mirror
- Solar control glass
- Burgundy leather interior²
- Front centre console cubby - 2x12V power outlets¹

Exterior and technology

- Continental ContiSportContact® 5 tyres¹
- 19" alloy wheels



19" alloy wheels with Continental ContiSportContact® 5 tyres¹



Surround View Monitor (SVM)¹

Special Edition colour combination chart⁴

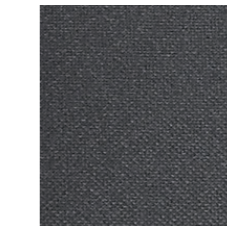
Model	Polar White (Solid) Standard Paint PYW	Pepper Grey (Metallic) Premium Paint Z3G	Phantom Black (Mica) Premium Paint PAE	Fiery Red (Metallic) Premium Paint PR2	Champion Blue (Metallic) Premium Paint U2U
Black leather appointed ²	•	-	•	•	•
Burgundy leather appointed ²	•	•	•	-	-

Style, your way.

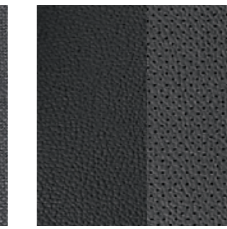
Your new Hyundai should stand out. Since the Tucson is a vehicle you'll want to be seen in, we've developed an interior and exterior colour range that emphasises its characteristics.

After all, everyone's different. From the colour of the paint, to the shade of the trim, this is your opportunity to perfectly match your Tucson to your personality.

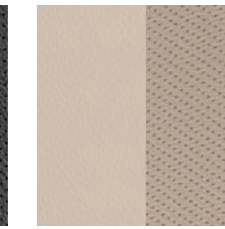
Tucson Interiors



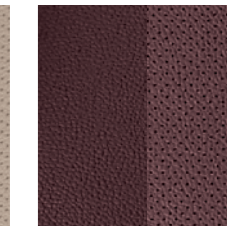
Black Cloth



Black Leather²



Beige Leather²



Burgundy Leather²

Tucson colour combination chart⁴

Model	Pure White (Solid) Standard Paint PKW	White Pearl (Mica) Premium Paint TW3	Platinum Silver (Metallic) Premium Paint U5S	Pepper Grey (Metallic) Premium Paint Z5G	Phantom Black (Mica) Premium Paint TCM	Sage Brown (Mica) Premium Paint M8N	Gemstone Red (Mica) Premium Paint R5R	Aqua Blue (Mica) Premium Paint R2U	Dusk Blue (Mica) Premium Paint XB3	Fiery Red (Metallic) Premium Paint PR2	Champion Blue (Metallic) Premium Paint U2U
Go / Go with SmartSense™³ safety pack											
Black cloth	•	-	•	•	•	-	-	•	-	-	-
Active X / Active X with SmartSense™³ safety pack											
Black leather appointed ²	•	-	•	•	•	-	•	•	-	-	-
Beige leather appointed ²	•	-	-	-	•	•	-	•	-	-	-
Elite											
Black leather appointed ²	•	-	•	•	•	-	-	•	-	-	-
Beige leather appointed ²	•	-	-	-	•	•	-	•	-	-	-
Special Edition											
Black leather appointed ²	•	-	-	-	•	-	-	-	-	•	•
Burgundy leather appointed ²	•	-	-	•	•	-	-	-	-	-	-
Highlander											
Black leather appointed ²	•	•	•	•	•	-	•	•	•	-	-
Beige leather appointed ²	•	-	-	-	•	•	-	•	-	-	-

¹Only available on the Special Edition.

²Leather appointed seats means parts of the seats have a combination of genuine and artificial leather, but are not wholly leather. Burgundy leather interior is only available with selected exterior colours in the Special Edition variant.

³Hyundai SmartSense™ is a registered trademark of Hyundai Motor Company. Safety features are not a substitute for attentive driving.

⁴Colours shown are indicative only and may vary due to the printing process. Metallic and mica paint are optional extras.

Hyundai Genuine Accessories.

Your Tucson isn't just an SUV. It's an extension of you. So make it as unique as you are, with Hyundai Genuine Accessories.^ From nudge bars to side steps and bonnet protectors, there's a suite of practical, and stylish Accessories to complement the way you drive.



Top: Bonnet protector - clear
Bottom: Roof racks⁷

Top: Cargo liner
Bottom: Tailored carpet floor mats (set of 4)

Top: Laser shades (set of 2, rear)
Bottom: Side steps (set of 2)⁵



Genuine Accessories	Go	Active X	Elite	Highlander & SE
Technology				
Auxiliary Cable ¹	•	•	•	•
iPad® Holder ²	•	•	•	•
Wireless phone inductive charger ³	•	•	-	-
Interior				
Laser Shades (set of 2, rear)	•	•	•	•
Cargo Barrier	•	•	•	-
Cargo Barrier front position strap	•	•	•	-
Tailored Carpet Floor Mats (set of 4)	•	•	•	•
Tailored Rubber Floor Mats (set of 4)	•	•	•	-
Dash Mat	•	•	•	•
Cargo Liner	•	•	•	•
Fabric Rear Bumper Protector	•	•	•	•
Portable Cooler ⁴ (12 volt, 15 litre)	•	•	•	•
Cargo Organiser	•	•	•	•
Water Resistant Neoprene - Front seat covers	•	•	•	•
Water Resistant Neoprene - Rear seat covers	•	•	•	•
Exterior				
Alloy Nudge Bar	•	•	-	-
Alloy Nudge Bar - (Black Ace)	•	•	-	-
Alloy Nudge Bar with Integrated LED driving light (Black Ace)	•	•	-	-
Headlight Protectors (set of 2)	•	•	•	•
Bonnet Protector - Clear	•	•	•	•
Bonnet Protector - Smoked	•	•	•	•
Side Steps (set of 2) ⁵	•	•	•	•
Tinted Stylevisors (set of 4)	•	•	•	•
Towbar, Towball & Trailer Wiring Harness ⁶	•	•	•	•
Styling				
Interior Lighting Fitting Kit	•	•	•	•
Mirror Covers - Brushed	•	•	•	•
Mirror Covers - Chrome	•	•	•	•
Scuff Plates (set of 4)	•	•	•	•
17 inch Black Satin wheels	•	•	-	-
18 inch Black Satin wheels	•	•	-	-
Roof Racks and Lifestyle				
Roof Racks ⁷	•	•	•	•
Bike Carrier - wheel off	•	•	•	•
Bike Carrier - wheel on	•	•	•	•
Kayak Holder	•	•	•	•
Ski and Snowboard Carrier	•	•	•	•
Surfboard Carrier	•	•	•	•
Roof Pod 395L	•	•	•	•
Safety				
First Aid Kit (4 Pocket)	•	•	•	•
Front Park Assist ⁸	•	•	•	-
Hyundai Auto Link Premium				
SIM module ⁹	-	-	•	•

^All Hyundai Genuine Accessories are subject to warranty conditions. See your nearest Hyundai Dealer or visit www.hyundai.com.au for full warranty terms and usage recommendations. 1. Auxiliary cable not suitable for Apple® devices 2. iPad® is a registered trademark of Apple Inc. The iPad® holder has been designed to hold iPad® models 1, 2, 3, 4 or Air Securely. To ensure occupants are protected in the event of a collision, the screen protector must be fitted to the iPad® when in use. iPad® not included. 3. Chargers Qi enabled smartphone devices. 4. Only suitable for use with a retractable seatbelt. 5. Maximum Load Rating 180kg 6. AWD Maximum ball download 140kg. Towing capacity 1600kg braked & 750kg unbraked. 2WD maximum ball download 120kg. Towing capacity 1600kg braked & 750kg unbraked. Towbar capacity subject to regulatory requirements, towbar design, vehicle design and towing equipment limitations. 7. Load capacity = 75kg evenly distributed across 2 bars. Roof Racks should be removed when not in use. 8. Park assist is designed as driver assist function only and should not be used as a substitute for skilled driving and safe parking practices. While the park assist sensors monitor objects on approach, there may be occasions where blind spots affect the sensitivity of the sensors and as a result the area into which the vehicle is heading must be visually monitored by the driver at all times while parking. 9. Use and availability of Hyundai Auto Link may be subject to additional fees, terms and conditions. Find out more on www.hyundai.com.au/owning/auto-link. Some services may not be fully available if the GPS system or other mobile device features are not working.

Hyundai Auto Link Bluetooth®.

Hyundai Auto Link Bluetooth® (standard on Go, Active X, Elite and Special Edition) is a smartphone app that lets you stay connected with your Tucson.

The app connects with the Tucson's pre-installed module to link the car to your smartphone via Bluetooth®, so you can drive smoothly.

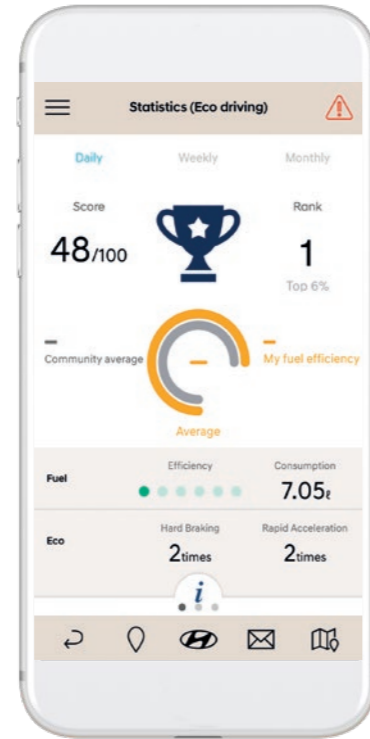
Become an economical driver.

- Keeps track of your driving habits and fuel efficiency on each trip.
- Presents vehicle health report and alerts you to any signs of faults.
- Remotely monitors your Tucson's health.
- Provides analytical information so you can get the most out of your Tucson.

Help us care for your car.

- Service information and online service bookings at your fingertips.
- Easy access to Hyundai Customer Care.
- Compare your driving to other owners.
- Logs private and business trip stats for record keeping purposes.
- Alerts Roadside Assistance in case of a breakdown.
- Sends alert messages¹ to Customer Care or family/friends in case of an emergency.

For more information head to www.hyundai.com.au/auto-link



Auto Link Bluetooth®
Statistics eco driving screen.



Auto Link Premium
remote access screen.



Bluetooth® is a registered trademark of Bluetooth SIG, Inc.
1. Not all Hyundai Auto Link services are available everywhere, particularly in remote or enclosed areas, or on all vehicles, at all times. The operation of the location services may be affected by your location, activation or deactivation of location services on your mobile device, and the services provided by your telecommunications service provider. Some Hyundai Auto Link services may not be fully available if the GPS system or other mobile device features are not working.

Hyundai Auto Link		
Features	Bluetooth*	SIM (Premium)
Variant	Go, Active X, Elite, Special Edition	Highlander
Status		
Owner driving analysis (driving habits, scores)	•	•
Eco driving (fuel efficiency rating, consumption) improvement status	•	•
CO2 emission improvement status (g/km)	•	•
Safe driving (rapid acceleration/hard braking) improvement status	•	•
Driving history (trip distance, travel time)	•	•
Vehicle health check (report on faults detected by type, time, date)	•	•
Tyre pressure and battery status	•	•
Refuelling history (refuel location, time, cost)	-	•
Real-time weather (based on vehicle location)	-	•
Search		
Display of Hyundai Dealer Network (select preferred dealer)	•	•
Access Customer Care (user view FAQs)	•	•
Log private and business trips for record keeping purposes	•	•
Instant search (latest and pre-owned Hyundai vehicles at preferred dealer)	•	•
Vehicle's parked location on map (based on GPS)	•	•
Vehicle's parking time alert notification	•	•
Fuel finder (locate cheapest fuel closest to location, receive fuel discounts)	-	•
Safety		
Emergency assist (send alert messages to Customer Care or family/friends)	•	•
Accident assist (keep log of data during an accident)	•	•
Scheduled service (due/overdue) alert	•	•
Automatic RSA alert (send location in case of a breakdown)	•	•
Geo-fencing alert	-	•
Set guard (theft control) mode	-	•
Valet alert	-	•
Sharing		
Social sharing (best trips with family/friends on social media)	•	•
Share vehicle location to family/friends	•	•
Remote Control		
Remote engine (on/off) start	-	•
Remote door (lock/unlock) control	-	•
Remote warning lights (hazard) control	-	•
Remote horn control	-	•
Remote climate (including defroster) control	-	•

Key:
• = Feature is available - = Feature is not available

Notes:
Use and availability of Hyundai Auto Link may be subject to additional fees, terms and conditions. Find out more on www.hyundai.com.au/owning/auto-link. Some services may not be fully available if the GPS system or other mobile device features are not working.

Hyundai Auto Link Premium.

Hyundai Auto Link Premium (standard on Highlander) is an upgraded version of the Bluetooth® app that lets you stay remotely connected with your Tucson.

Your drive, your way, made better.

- Allows remote engine start from smartphone.
- Lets cars' doors, lights and climate control to be handled remotely.
- Sets geo-fencing, guard (theft control) and valet mode.

Download the app for your iOS and Android device² today.



2. Device compatibility list can be found at www.hyundai.com.au/owning/auto-link. Use and availability of the Hyundai Auto Link Premium app may be subject to additional fees, terms and conditions. Find out more on www.hyundai.com.au/owning/auto-link. Some Hyundai Auto Link Premium services may not be fully available if the GPS system or other mobile device features are not working.

CarPlan. The smarter way to finance your new Hyundai.

Life's full of surprises and while you won't always know what's around the next corner, with Hyundai CarPlan™ you'll always have the right car for the journey there. It's a smart and flexible way to have the vehicle that's perfect for you, even as your lifestyle changes.

Hyundai CarPlan™ has been developed by Hyundai Finance™ to provide flexibility at the end of your finance contract, letting you enjoy the new Hyundai experience again and again. At the end of your finance contract you can pay any amounts owing on your finance contract to keep your Hyundai or trade it in at your preferred Hyundai dealer to step into the latest Hyundai model and continue your journey with us. The choice is yours.

In a nutshell.



1. Choose your Hyundai model

Visit a participating Hyundai Dealer and select an eligible new or demonstrator Hyundai¹ that best suits your lifestyle.



2. Choose an eligible finance solution

You can choose your desired finance contract term of 36 or 48 months and the kilometres you intend to travel up to a maximum of 25,000 per year.

Our fixed rate loans are available with or without a deposit – whichever suits you.²



3. We'll then tell you:

- How much your regular payments will be over the finance contract term³
- The Guaranteed Trade in Value for your new Hyundai. The Guaranteed Trade in Value is the value of your new Hyundai at the end of your finance contract as determined by Hyundai Finance™ subject to Fair Wear and Tear conditions and agreed kilometres not being exceeded.
- We'll also give you a copy of the Fair Wear & Tear Guidelines, setting out the condition requirements you'll need to maintain over the finance contract term to avoid any adjustments to your Guaranteed Trade in Value under the GTV terms.⁴

It's all about choice.

We know that everyone's lifestyle and situation is different, so we give you two different options to choose from when your contract comes to an end: keep your Hyundai, or trade it for a brand new one¹ knowing your Guaranteed Trade in Value.



1.

Keep your Hyundai by paying any amounts owing on your finance contract or applying through Hyundai Finance™ to refinance the loan residual balance.



2.

Trade in your Hyundai at your preferred Hyundai dealer and apply for another Hyundai CarPlan™ giving you the chance to step into the latest Hyundai model and continue your journey with us.



1. The feature is available on all new and demonstrator Hyundai vehicles on selected models only. Please verify with your dealership which vehicles are eligible for the programme.
 2. Please read the full terms and conditions. Please consider whether these products and services are appropriate for your circumstances. Before acting on any of the information in this brochure, please seek independent tax advice. Full terms and conditions are available upon application. Available only to approved applicants of Hyundai Finance™. Subject to credit assessment and for consumer applications, responsible lending criteria. Fees and charges apply. Fleet, government, rental buyers, hire car and chauffeur companies are excluded. Available at participating Hyundai dealers.
 3. Your total interest charged may be higher if you choose the Guaranteed Trade in Value feature for your loan, compared to a loan without the feature.
 4. The Guaranteed Trade in Value is not a representation by Hyundai Finance™ as to the likely market value of your vehicle as at the end of your finance contract. If the Guaranteed Trade in Value applies and the vehicle is not returned in an acceptable condition, as defined in the terms and conditions or exceeds kilometre restrictions, the Guaranteed Trade in Value will be reduced and you'll be required to pay the difference.

How does Hyundai's new CarPlan differ from typical Hyundai financing?



Greater confidence

Hyundai CarPlan™ will ensure the amount you receive on trade in satisfies the final repayment, even where the value of the trade in is less than the final repayment amount¹. If the trade in valuation is higher than the Hyundai CarPlan™ value, the difference can be used as equity towards your new or demonstrator Hyundai when you purchase it².



A personally tailored solution

You may decide on the term for your finance contract, the deposit you would like to pay (if any) and the kilometres you intend to travel.



Greater flexibility

At the end of the finance contract term, you'll have the choice to keep your Hyundai, or trade it for a brand new one².



More options

You have the option to include things like Pre-Paid Service Plan³, insurance and accessory costs as part of your fixed-rate loan agreement.

Maintaining your vehicle.

To ensure you enjoy the full benefits of the Hyundai CarPlan™, your Hyundai must be in an acceptable condition when you are trading it in for your new Hyundai² and must not exceed the kilometre limit you have selected. Of course, we also understand that some reasonable wear and tear is to be expected, but it needs to remain within the provisions of your Hyundai CarPlan™ contract and Fair Wear & Tear Guidelines.

Where the vehicle is not in acceptable condition or where you have exceeded your kilometre limit, the Guaranteed Trade in Value of your vehicle will be reduced.

Is Hyundai's new CarPlan right for you?

Hyundai CarPlan™ is just one of many options available from Hyundai Finance™, so there may be another product that suits your individual needs better. Have a chat to your participating Hyundai Dealer about what's right for you.



1. The Guaranteed Trade in Value is not a representation by Hyundai Finance™ as to the likely market value of your vehicle as at the end of your finance contract. If the Guaranteed Trade in Value applies and the vehicle is not returned in an acceptable condition, as defined in the terms and conditions or exceeds kilometre restrictions, the Guaranteed Trade in Value will be reduced and you'll be required to pay the difference.

2. The feature is available on all new and demonstrator Hyundai vehicles on selected models only. Please verify with your dealership which vehicles are eligible for the programme.

3. Pre-Paid Service Plan: for scheduled services only, including parts. Does not include fair wear and tear items. For full terms and conditions visit hyundai.com.au/pre-paid

The Hyundai CarPlan from Hyundai Finance is a feature which ensures you receive the Guaranteed Trade in Value (determined by Hyundai Finance) at the end of the term of your contract when you trade it in at a participating Hyundai Dealer in accordance with the terms and conditions.

To exercise the feature your vehicle must be inspected and assessed by a participating Hyundai dealer at the end of the term of your finance contract. Adjustments to the value may apply. You receive the Guaranteed Trade in Value for the car if you exercise the feature at the end of the term and purchase a new or demonstrator Hyundai at the same time. The amount you receive on trade in will satisfy the final repayment, even where the trade in is less than the repayment amount.

Relax, we'll take it from here.

There's a reason why our iCare program is so highly regarded. We built iCare around one simple, innovative idea. That comprehensive on-the-road care should come standard with every car – not just as an “optional extra”.

Our five-year, unlimited kilometre warranty[^] means you've got the freedom to go ahead and drive without having to keep an eye on the odometer.

When you look at our Lifetime Service Plan,^{^^} the benefits speak for themselves. Regular servicing (at a set price) by factory-trained Hyundai Technicians will help keep your Hyundai in peak condition, giving you peace of mind today, and into the future.

Since every new Hyundai is built to the highest standards, we've got the confidence to offer comprehensive customer service without exception. Or as we like to say, amazing as standard. That includes a Sat Nav update plan for up to 5 years*, and 24/7 Roadside Support[†] for up to ten years when you service with us.



iCare



[^]5 year/unlimited Km warranty: Applies to new passenger vehicles used for private/domestic purposes. Excludes vehicles used at any time for “commercial application” as defined in the vehicle warranty policy, for which a 5 year/130,000km (whichever occurs first) warranty applies. Refer to full warranty terms & conditions, for details and exclusions. ^{^^}Lifetime Service Plan: For the benefit of Hyundai owners, Hyundai provides online quotes, which specify the maximum price applicable for a vehicle's next scheduled maintenance service at a participating authorised Hyundai dealer and using genuine Hyundai parts (where required). Online quotes are available at www.hyundai.com.au, apply for a stated effective period only and may change after that effective period without notice. Standard scheduled maintenance services are of limited scope. The benefit of online quotes is available for all Hyundai's, for their lifetime. ^{*}Sat Nav Update Plan: Only applies to new vehicles with factory fitted satellite navigation. Updates are delivered annually and are complimentary if the vehicle completes a scheduled service at a participating Hyundai dealer. Updates must be undertaken within 5 years of the vehicle's initial purchase, maximum number of 4 updates. [†]Roadside Support Plan: Complimentary 12 months Roadside Support when you purchase a new Hyundai passenger vehicle (excluding rental buyers). Further Roadside Support extensions are available, each for 12 months from the date of a scheduled maintenance service at a participating authorised Hyundai dealer (unless vehicle is more than 108 months (9 years) from the original new car sale date, in which case entitlement to Roadside Support ends when vehicle reaches 120 months (10 years) from original new car sale date).

Tucson.



Big help, for little Aussies.

Every time a new car is sold at one of our Dealerships, both Hyundai and the Dealer will donate part of the sale price to Hyundai Help for Kids™.

Hyundai Help for Kids™ offers funding to child-focused organisations and charities working to improve the lives of children all over Australia - from supporting community initiatives, to providing much-needed medical equipment.

So when you buy a Hyundai, you're buying more than just a car. Together with Hyundai Help for Kids™, you're empowering thousands of young Australians and giving them a better future.



* Hyundai Help for Kids™ is a registered trade mark of Hyundai Motor Company.

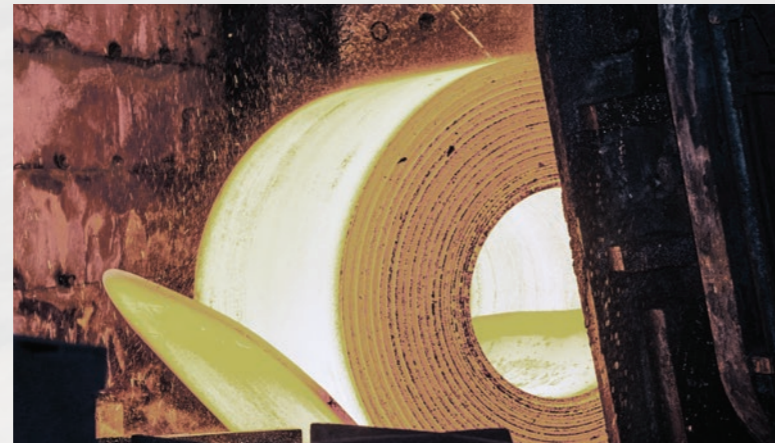
Tucson.

Australia, in our DNA.

We're one of the biggest car manufacturers in the world – and one of the fastest growing global car brands.

We're also the only car company in the world producing its own steel, because we know the best steel makes for the strongest cars.

That's why we source the majority of our high quality iron ore from right here, in Australia's backyard. So now, when you buy a new Hyundai, you know you're driving a car that's directly connected to home.



Tucson.

Hyundai Tucson				
Engine	2.0 GDi 2WD		1.6 T-GDi AWD	2.0 CRDi AWD
Engine family	Nu		Gamma	R series
Configuration	Transverse front mounted driving front wheels		Transverse front mounted driving front and rear wheels	Transverse front mounted driving front and rear wheels
Cylinder capacity	2.0 litres (1,999 cc)		1.6 litres (1,591 cc)	2.0 litres (1,995 cc)
Number of cylinders	4 in-line		4 in-line	4 in-line
Valve system	16 Valve (HLA)		16 Valve (MLA)	16 Valve (HLA)
Intake System	2-step variable induction system		Turbocharger	Electronic Control Variable Geometry Turbocharger (E-VGT)
Maximum power	122 kW @ 6,200 RPM		130 kW @ 5,500 RPM	136 kW @ 4,000 RPM
Maximum torque	205 Nm @ 4,000 RPM		265 Nm @ 1,500 - 4,500 RPM	400 Nm @ 1,750 - 2,750 RPM
Fuel system	GDi (Gasoline Direct Injection)		T-GDi (Turbo Gasoline Direct Injection)	CRDi (Common Rail Direct Injection)
Fuel type	91 RON (ULP), E10 compatible		91 RON (ULP), E10 compatible	Diesel
Emissions standard	Euro 5		Euro 5	Euro 5
Bore x stroke	81.0 mm x 97.0 mm		77.0 mm x 85.44 mm	84.0 mm x 90.0 mm
Compression ratio	11.5:1		10:1	16:1
Transmission	2.0 GDi 2WD		1.6 T-GDi AWD	2.0 CRDi AWD
All Wheel Drive (AWD) System	-		Active on-demand 4WD with 50/50 front & rear lock mode	Active on-demand 4WD with 50/50 front & rear lock mode
Manual	6 speed manual		-	-
Automatic	6 speed automatic		-	8 speed automatic
Dual Clutch Transmission (DCT)	-		7 speed DCT (dry clutch) with sequential manual mode	-
Gear ratio	Manual	Automatic	DCT	Automatic
1st	3.769	4.400	3.929	4.808
2nd	2.080	2.726	2.318	2.901
3rd	1.387	1.843	2.043	1.864
4th	1.079	1.392	1.070	1.424
5th	0.884	1.000	0.822	1.219
6th	0.774	0.774	0.884	1.000
7th	-	-	0.721	0.799
8th	-	-	-	0.648
Reverse	3.077	3.440	5.304	3.425
Final	4.533 (1st, 2nd, 3rd, 4th, 5th, 6th) 5.231 (Reverse)		4.857 (1st, 2nd, 4th, 5th) 3.579 (3rd, 6th, 7th, Reverse)	3.171
Engine/transmission availability	2.0 GDi 2WD		1.6 T-GDi AWD	2.0 CRDi AWD
	Manual	Automatic	DCT	Automatic
Go	•	•	-	•
Active X	•	•	-	•
Elite	-	•	•	•
Special Edition	-	-	•	•
Highlander	-	-	•	•
Steering	Column mounted Motor Driven Power Steering (C-MDPS), rack & pinion			
Type	Column mounted Motor Driven Power Steering (C-MDPS), rack & pinion			
Minimum turning circle diameter between kerbs / walls	11 m			
Number of steering wheel turns lock to lock	2.51			
Suspension	MacPherson strut			
Front	MacPherson strut			
Rear	Multi-link			

Key:
• = Feature is available on trim ◦ = Feature is available on trim only as part of an option pack - = Feature is not available on trim

Hyundai Tucson				
Brakes	2.0 GDi 2WD		1.6 T-GDi AWD	2.0 CRDi AWD
System	Dual-diagonal, split circuit, power assisted with Electronic Brakeforce Distribution (EBD) and Brake Assist System (BAS)			
Front brake type	Ventilated disc			
Front disc dimensions	305 mm x 25 mm			
Rear brake type	Solid disc			
Rear disc dimensions	302 mm x 10 mm			
Weight	2.0 GDi 2WD		1.6 T-GDi AWD	2.0 CRDi AWD
	Manual	Automatic	DCT	Automatic
Kerb weight - lightest	1467 kg	1490 kg	1548 kg (Special Edition) 1561 kg (Elite & Highlander)	1643 kg (Special Edition) 1656 kg (Go, Active X, Elite & Highlander)
Kerb weight - heaviest	1566 kg	1590 kg	1669 kg (Special Edition) 1666kg (Elite & Highlander)	1770 kg (Special Edition) 1769 kg (Go, Active X, Elite & Highlander)
Gross Vehicle Mass (GVM)	2040 kg	2060 kg	2150 kg	2250 kg
Permissible Axle Weight (PAW) - front	1240 kg	1240 kg	1240 kg	1240 kg
Permissible Axle Weight (PAW) - rear	1150 kg	1150 kg	1150 kg	1150 kg
Roof rack load limit	100 kg	100 kg	100 kg	100 kg
Towing capacity	2.0 GDi 2WD		1.6 T-GDi AWD	2.0 CRDi AWD
	Manual	Automatic	DCT	Automatic
Braked	1600 kg	1600 kg	1600 kg	1600 kg
Unbraked	750 kg	750 kg	750 kg	750 kg
Maximum towball weight	120 kg	120 kg	140 kg	140 kg
Fuel consumption*	2.0 GDi 2WD		1.6 T-GDi AWD	2.0 CRDi AWD
	Manual	Automatic	DCT	Automatic
Combined (L/100km)	7.8	7.9	7.7	6.4
Urban (L/100km)	10.6	11.0	9.6	8.0
Extra Urban (L/100km)	6.2	6.1	6.5	5.4
CO ² - combined (g/km)	182	185	178	168
Fuel tank volume	62L			

*Source: Australian Design Rule 81/02 static laboratory combined average city and highway cycle test. Real world fuel consumption will vary depending on a combination of driving habits, the condition of the vehicle, and other factors such as road, traffic and weather conditions. ADR 81/02 test results are meant for comparison purposes only.

Dimensions	Go	Active X	Elite	Special Edition	Highlander
Exterior					
Length	4480 mm				
Width	1850 mm				
Height (with roof rails)	1655 mm (1660 mm)				
Wheelbase	2670 mm				
Wheel track - front / rear	1608 mm / 1620 mm	1608 mm / 1620 mm	1608 mm / 1620 mm	1604 mm / 1615 mm	1604 mm / 1615 mm
Minimum ground clearance (based on kerb weight)	172 mm	172 mm	172 mm	182 mm	172 mm
Approach / departure / ramp break over angle	17.9° / 24.5° / 19.5°				
Interior					
Head room front / rear (w/ Sunroof)	1005 / 995 mm (963 / 969 mm)				
Leg room front / rear	1053 - 1129 / 970 mm				
Shoulder room front / rear	1450 / 1410 mm				
Hip room front / rear	1413 / 1384 mm				
Cargo area - VDA (minimum / maximum)	488 L / 1478 L				
Wheels & tyres	Go	Active X	Elite	Special Edition	Highlander
Wheel type	Steel	Alloy	Alloy	Alloy	Alloy
Wheel dimensions	17 x 7.0J +51	17 x 7.0J +51	18 x 7.0J +51	19 x 7.5J +53	19 x 7.5J +53
Tyre dimensions	225/60 R17 99H	225/60 R17 99H	225/55 R18 98H	245/45 R19 98W (Continental ContiSportContact™ 5)	245/45 R19 98H
Spare wheel type	Full size steel	Full size alloy	Full size alloy	Full size alloy	Full size alloy

Hyundai Tucson					
Driving convenience	Go	Active X	Elite	Special Edition	Highlander
Hyundai Auto Link	•	•	•	•	-
Hyundai Auto Link Premium	-	-	-	-	-
Cruise control	•	•	•	•	•
Electronic Parking Brake (EPB) (with auto hold function)	◦ ¹	◦ ¹	•	•	•
One touch turn signal - 3, 5, or 7 flashes	-	•	•	•	•
Rain sensing wipers	-	-	-	-	-
Rear wiper - 2-stage, with auto wipe on reverse	•	•	•	•	•
Smart Key with push button start	-	-	•	•	•
Steering wheel mounted controls - audio, phone, cruise control & trip computer	•	•	•	•	•
Tilt & telescopic steering column	•	•	•	•	•
Driving engagement	Go	Active X	Elite	Special Edition	Highlander
Drive Mode - 3 settings (Comfort, Eco, Sport)	-	• ²	• ²	• ²	•
Active safety	Go	Active X	Elite	Special Edition	Highlander
Electronic Stability Control (ESC) including;					
Anti-lock Braking System (ABS)	•	•	•	•	•
Brake Assist System (BAS)	•	•	•	•	•
Electronic Brakeforce Distribution (EBD)	•	•	•	•	•
Downhill Brake Control (DBC)	•	•	•	•	•
Hill-start Assist Control (HAC)	•	•	•	•	•
Traction Control System (TCS)	•	•	•	•	•
Vehicle Stability Management (VSM)	•	•	•	•	•
Hyundai SmartSense™ ^{MS} including;					
Blind-Spot Collision Warning (BCW)	◦ ¹	◦ ¹	•	•	•
Driver Attention Warning (DAW)	◦ ¹	◦ ¹	•	•	•
Forward Collision-Avoidance Assist (FCA) - Car & Pedestrian	◦ ¹	◦ ¹	•	•	•
High Beam Assist (HBA)	◦ ¹	◦ ¹	•	•	•
Lane Keeping Assist (LKA)	◦ ¹	◦ ¹	•	•	•
Rear Cross-Traffic Collision Warning (RCCW)	◦ ¹	◦ ¹	•	•	•
Smart Cruise Control (SCC) with Stop & Go	◦ ¹	◦ ¹	•	•	•
Surround View Monitor (SVM)	-	-	-	•	-
Other features					
Emergency Stop Signal (ESS)	•	•	•	•	•
Park Assist System (PAS) - front (4 sensors, with guidance display)	-	-	-	•	•
Park Assist System (PAS) - rear (4 sensors, with guidance display)	-	•	•	•	•
Rear view camera with dynamic guide lines	•	•	•	•	•
Trailer Stability Assist (TSA)	-	-	-	•	-
Tyre Pressure Monitoring System (TPMS) - individual tyre pressure readout	-	•	•	•	•
Passive safety	Go	Active X	Elite	Special Edition	Highlander
Airbags					
Front airbags - driver & front passenger	•	•	•	•	•
Side (thorax) airbags - driver & front passenger	•	•	•	•	•
Side curtain airbags - 1st & 2nd rows	•	•	•	•	•
Roll-over Sensor	•	•	•	•	•
Doors					
Impact sensing auto door unlock	•	•	•	•	•
Rear door child safety locks	•	•	•	•	•
Seatbelts					
Pretensioners, load limiters & height adjustable upper mounts on front seat belts	•	•	•	•	•
Seat belt reminder - front & rear seatbelts	•	•	•	•	•
Seat belt holder - 2nd row	•	•	•	•	•

Key:
• = Feature is available on trim ◦ = Feature is available on trim only as part of an option pack - = Feature is not available on trim

Hyundai Tucson					
Passive safety	Go	Active X	Elite	Special Edition	Highlander
Seating					
Height adjustable front head restraints with tilt function	•	•	•	•	•
Height adjustable rear head restraints	•	•	•	•	•
ISOFIX child restraint anchors (rear outboard seats)	•	•	•	•	•
Top tether child restraint anchors (rear) - 3 anchors	-	•	•	•	•
Security	Go	Active X	Elite	Special Edition	Highlander
Security system					
Active lock/unlock operation (user configurable)	•	•	•	•	•
Anti-theft alarm	-	•	•	•	•
Central locking	•	•	•	•	•
Engine immobiliser	•	•	•	•	•
Remotes					
Keyless entry remote - 2x	•	•	-	-	-
Smart Key remote - 2x	-	-	•	•	•
Multimedia system	Go	Active X	Elite	Special Edition	Highlander
Functions					
Apple CarPlay ³ & Android Auto ⁴ compatibility	•	•	•	•	•
Bluetooth phone connectivity	-	•	•	•	•
Satellite navigation	•	•	•	•	•
SUNA™ Live Traffic Updates	-	•	•	•	•
Touch screen - 7" display	•	-	-	-	-
Touch screen - 8" display	-	•	•	•	•
Speakers					
Audio system - 6 speakers	•	-	-	-	-
Infinity™ premium audio system - 8 speakers with external amplifier	-	•	•	•	•
Audio/media sources					
AM/FM radio	•	•	•	•	•
Digital radio (DAB+)	-	•	•	•	•
Radio Data System (RDS)	•	•	•	•	•
AUX / USB audio input with iPod® compatibility	•	•	•	•	•
Bluetooth audio streaming	•	•	•	•	•
Occupant comfort & convenience	Go	Active X	Elite	Special Edition	Highlander
Upholstery/trim					
Leather ⁵ appointed interior - seats, steering wheel & gear knob	-	•	•	•	•
Front seats					
Driver's seat - height adjustable	•	•	•	•	•
Driver's seat - manually adjustable with power adjustable lumbar support - 2-way	-	•	-	-	-
Driver's seat - power adjustable - 10-way (including 2-way lumbar support)	-	-	•	•	•
Passenger's seat - power adjustable - 8-way	-	-	-	-	•
Front centre console bolster - driver's side	-	•	-	-	•
Front centre console storage cubby - power outlet - 1 x 12V outlet	-	•	•	-	•
Front centre console storage cubby - power outlets - 2 x 12V outlets	-	-	-	•	-
Front centre console - wireless charging pad (Qi standard) ⁶	-	-	-	-	•
Grip handles - 1x (passenger)	•	•	•	•	•
Rear seats					
Centre fold down armrest	•	•	•	•	•
Grip handles - 2x	•	•	•	•	•
Rear centre console - USB power outlet	-	•	•	•	•

Notes:
1. Feature only available when fitted with optional SmartSense Pack. 2. Drive mode select only available on 1.6 T-GDi and 2.0 CRDi variants with Comfort and Eco modes not available on Special Edition. 3. Apple CarPlay requires iPhone 5 or subsequent model (lightning cable) in order to operate. 4. Android Auto requires a device with Android 5.0 operating system or subsequent version in order to operate. 5. Finishes specified as leather may contain elements of genuine leather, polyurethane leather (leather substitute) or man-made materials, or a combination thereof. 6. Wireless charging requires a Qi-enabled smartphone or adapter in order to operate. 7. Feature is available on trim only as part of an option interior (burgundy). 8. Heated / Power folding exterior mirrors with auto fold function standard on Active X models.


Hyundai Tucson					
Occupant comfort & convenience	Go	Active X	Elite	Special Edition	Highlander
Windows/shades					
Acoustic laminated windshield glass	*	*	*	*	*
Panoramic glass sunroof - dual panel with tilt and slide front panel and power sunblind	-	-	-	-	*
Power windows - front & rear	*	*	*	*	*
One touch window down function - driver's window	*	-	-	-	-
One touch window up & down function with anti-pinch safety feature - driver's window	-	*	*	*	*
Solar control glass	-	-	-	*	*
Rear privacy glass	-	-	*	*	*
Sunvisor extensions - driver and front passenger	*	*	*	*	*
Doors/boot/tailgate					
Luggage area power outlet - 1 x 12V outlet	*	*	*	*	*
Smart Tailgate (rear power tailgate with hands-free opening)	-	-	-	-	*
Vision & sight	Go	Active X	Elite	Special Edition	Highlander
Interior mirror					
Electro-chromatic Mirror (ECM) - auto-dimming with integrated compass	-	-	-	*	*
Exterior mirrors					
Heated	o ¹	*	*	*	*
Power adjustable	*	*	*	*	*
Power folding with auto fold function	o ¹	*	*	*	*
Instrument cluster/driving displays					
Instrument cluster - 3.5" TFT LCD with trip computer & digital speedometer	*	*	*	*	-
Supervision cluster - 4.2" TFT colour LCD with trip computer & digital speedometer	-	-	-	-	*
Ventilation & heating	Go	Active X	Elite	Special Edition	Highlander
Air conditioning					
Climate control - dual zone	o ¹	o ¹	-	-	-
Climate control - dual zone with auto defog function	-	-	*	*	*
Manual controls	*	*	-	-	-
Cabin air filter	*	*	*	*	*
Cluster ioniser (clean air function)	o ¹	o ¹	*	*	*
Cooling/heating vents - rear centre console	-	-	*	*	*
Cooling/heating vents - rear floor	*	*	*	*	*
Front seats					
Air ventilated front seats	-	-	-	-	*
Heated front seats	-	-	-	-	*
Other features					
Glovebox cooling	o ¹	o ¹	*	*	*
Heated rear windshield	*	*	*	*	*
Heated steering wheel	-	-	-	-	*
Exterior styling	Go	Active X	Elite	Special Edition	Highlander
Front					
Front grille - matte black	*	*	-	-	-
Front grille - glossy black	-	-	*	*	*
Front grille surround - matte grey	*	*	-	-	-
Front grille surround - chrome	-	-	*	*	*
Front grille inserts - chrome	-	-	*	*	*
Skid plate - matte grey	-	-	-	-	*

Hyundai Tucson					
Exterior styling	Go	Active X	Elite	Special Edition	Highlander
Side					
Door frame & beltline moulding - chrome	-	-	*	*	*
Exterior door handles - chrome	-	-	*	*	*
Side garnish insert - matte grey	-	-	*	*	*
Rear					
Dual exhaust tips - chrome	-	-	-	-	*
Spoiler - body coloured, tailgate mounted	*	*	*	*	*
Skid plate - matte grey	-	-	-	-	*
Interior styling	Go	Active X	Elite	Special Edition	Highlander
Treatments					
Black headlining	-	-	-	o ⁷	-
Alloy effect inserts (steering wheel and transmission gear knob)	*	*	*	*	*
Alloy effect surrounds (air vents)	*	*	*	*	*
Alloy effect garnish - power window switches	-	-	*	-	*
Dark grey inserts (steering wheel)	-	-	-	o ⁷	-
Dark grey surrounds (air vents and navigation unit)	-	-	-	o ⁷	-
Chrome effect garnish - power window switches	-	-	-	*	-
Materials					
Premium materials - dashboard and door centre trim	*	*	*	*	*
Premium materials - fabric pillar covers (a-pillars)	-	-	-	*	-
Lighting	Go	Active X	Elite	Special Edition	Highlander
Exterior lighting - front					
Fog lights	*	*	*	*	*
Daytime Running Lights (DRL) - LED	*	*	*	*	*
Headlight functions - automatic dusk sensing with escort and welcome	*	*	*	*	*
Headlight type - LED (low/high beam)	-	-	-	-	*
Headlight type - projector beam	*	*	*	*	-
Positioning lights - LED	*	*	*	*	*
Static bending lights - LED	-	-	-	-	*
Exterior lighting - rear					
Fog lights	*	*	*	*	*
High Mount Stop Light (HMSL) - LED	*	*	*	*	*
Rear combination lights - LED (bulb indicator and reverse lights)	-	-	-	-	*
Exterior lighting - others					
Courtesy lights - LED, in front door handles	-	-	-	*	*
Puddle lights - LED, in side mirrors	o ¹	o ¹	*	*	*
Side repeaters - LED, integrated into side mirrors	*	*	*	*	*
Interior lighting - front					
Front room lights and map lights	*	*	*	*	*
Front room lights and map lights - LED	-	-	-	-	*
Vanity mirror lights	-	o ¹	*	*	*
Glovebox compartment light	*	*	*	*	*
Interior lighting - rear					
Centre room light	*	*	*	*	*
Map lights (outboard) - LED	-	-	-	-	*
Interior lighting - others					
Cargo area light	*	*	*	*	*
Interior light fade-out delay	*	*	*	*	*
Safety reflectors - integrated in doors (front)	*	*	*	*	*

Hyundai Tucson					
Storage solutions	Go	Active X	Elite	Special Edition	Highlander
Front seats					
Centre console - deluxe type	o ¹	o ¹	*	*	*
Cup holders - centre console	*	*	*	*	*
Front seat back pockets	*	*	*	*	*
Glovebox compartment	*	*	*	*	*
Retractable sunglasses compartment	*	*	*	*	*
Ticket holders - sunvisors (driver and front passenger)	*	*	*	*	*
Rear seats					
Coat hooks - 3x	*	*	*	*	*
Cup holders - armrest	*	*	*	*	*
Rear seating split folding - 60:40	*	*	*	*	*
Boot/Luggage area					
Bag hooks - 1x	*	*	*	*	*
Cargo cover - retractable with 2 position setting	*	*	*	*	*
Luggage compartment - 6x mounting points	*	*	*	*	*
Luggage net	-	-	*	*	*
Underfloor side storage recess	*	*	*	*	*
Others					
Doors - map pockets and bottle bulges (front and rear)	*	*	*	*	*
Centre console - map pocket (passengers side)	*	*	*	*	*
Roof Rails	*	*	*	*	*
Option packages	Go	Active X	Elite	Special Edition	Highlander
SmartSense pack (Automatic only)					
Blind-Spot Collision Warning (BCW)					
Driver Attention Warning (DAW)					
Forward Collision-Avoidance Assist (FCA) - Car & Pedestrian					
High Beam Assist (HBA)					
Lane Keeping Assist (LKA)					
Rear Cross-Traffic Collision Warning (RCCW)					
Smart Cruise Control (SCC) with Stop & Go					
Climate control - dual zone	o	o			
Cluster ioniser (clean air function)				Features included as standard	Features included as standard
Glovebox cooling					Features included as standard
Electronic Parking Brake (EPB) (with auto hold function)					
Power folding exterior mirrors with auto fold function					
Heated exterior mirrors					
Puddle lights - LED, in side mirrors					
Centre console - deluxe type					
Drive mode select - not available on 2.0 GDI variant					
<p>Key:</p> <ul style="list-style-type: none"> * = Feature is available on trim o = Feature is available on trim only as part of an option pack - = Feature is not available on trim <p>Notes:</p> <ol style="list-style-type: none"> 1. Feature only available when fitted with optional SmartSense Pack. 2. Drive mode select only available on 1.6 T-GDI and 2.0 CRDI variants with Comfort and Eco modes not available on Special Edition. 3. Apple CarPlay requires iPhone 5 or subsequent model (lightning cable) in order to operate. 4. Android Auto requires a device with Android 5.0 operating system or subsequent version in order to operate. 5. Finishes specified as leather may contain elements of genuine leather, polyurethane leather (leather substitute) or man-made materials, or a combination thereof. 6. Wireless charging requires a Qi-enabled smartphone or adapter in order to operate. 7. Feature is available on trim only as part of an option interior (burgundy). 8. Heated / Power folding exterior mirrors with auto fold function standard on Active X models. 9. Feature is not available with option interior (burgundy) 					



 Like us at facebook.com/hyundaiaustralia

 Follow us at twitter.com/hyundaiaus

Hyundai Motor Company Australia

394 Lane Cove Road, Macquarie Park, NSW Australia 2113

www.hyundai.com.au

Hyundai Motor Company (HMC) and the Hyundai Motor Company Australia (HMCA) each reserve the right to alter vehicle specifications and equipment levels without notice. Some equipment featured on the cars in this brochure may not be available in Australia or may be optional. To the extent permitted by law, neither HMC nor HMCA shall be liable to any person as a result of reliance on the content of this brochure. Please consult your Hyundai Dealer for the latest specifications, equipment levels, options, prices, colours and vehicle availability. Metallic and mica paint are optional extras. Note: information in this brochure is current as at 10/03/19. Part No. TL0319B