

JEEP GLADIATOR



Jeep



Properly secure all cargo.

ACTIVE PURSUIT

When nothing can stop you,
you're given permission to stop at
nothing to reach your end zone.
Go as far as you dream, then
go beyond. Jeep® Gladiator is
purpose-built to take you to
your next adventure, with all
your toys in tow.





MADE TO BE
HEROIC



STORAGE

AVAILABLE
LOCKABLE AND REMOVABLE
STORAGE UNDER REAR SEAT

LOCKABLE BEHIND-
SEAT STORAGE

AVAILABLE
SEATBACK MOLLE GRID

COMFORT

AVAILABLE
OUTSTANDING
REAR-SEAT LEG ROOM

STANDARD
HEATED FRONT SEATS AND
STEERING WHEEL

STANDARD
DUAL-ZONE AUTOMATIC
TEMPERATURE CONTROL

WELL-EQUIPPED

FOR EVERY QUEST

RIDE EASY, EVERYWHERE

SIT BACK AND REALLY ENJOY THE DRIVE THANKS TO THE MANY THOUGHTFUL TOUCHES DESIGNED INTO THIS CABIN. THE GLADIATOR GIVES YOU LOTS OF CUSHIONED SUPPORT, SMART TECH ELEMENTS AND AN ARRAY OF CLEVER STORAGE FEATURES THAT ADD CONVENIENCE TO EVERY RIDE, WHETHER IT'S A LONG HAUL OR A QUICK SPIN TO THE CORNER STORE.



Properly secure all cargo.



TECH SUPPORT

SEE AND HEAR EVEN MORE

JEEP® GLADIATOR SUPPORTS YOUR “DO EVERYTHING” SPIRIT WITH AVAILABLE FRONT AND REAR CAMERAS¹,* AN AVAILABLE REMOVABLE SPEAKER, AND FULL-COLOUR DISPLAYS FRONT AND CENTRE. WITH SO MANY ADVANCED FEATURES, THE GLADIATOR MAKES IT EASY TO STAY INFORMED AND ENTERTAINED.

STANDARD

7-INCH DRIVER
INFORMATION DISPLAY



STANDARD

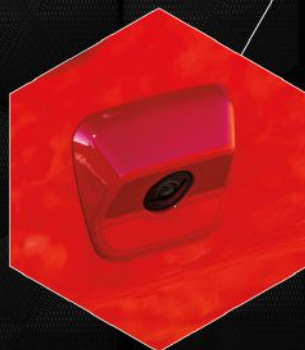
UCONNECT® 4 NAV WITH
8.4-INCH TOUCHSCREEN



U.S. Uconnect screen shown.

STANDARD

PARKVIEW® REAR
BACK-UP CAMERA¹



AVAILABLE

REMOVABLE
BLUETOOTH® SPEAKER



AVAILABLE

FORWARD-FACING
OFF-ROAD TRAILCAM¹



Shown with dealer-installed towing equipment.

*All disclaimers and disclosures can be found on the last page.

AVAILABLE

TOWING

2721 KG*

Those who aspire to truly do more now have the means to make it happen. Bring along your family camper, loaded-up trailer or nice-sized boat. Go anywhere, do it all and, most importantly, have fun out there.

AVAILABLE

PAYLOAD

620 KG

This versatile ute tray is built to carry most everything to every place you dream of reaching. Its 3-position tailgate, available spray-in bedliner and tonneau cover all add more function to your fun.



PUT IT TO BED

Lower the gate and take advantage of a 1531-mm long bed length that accommodates most anything you can't live without. The easy-open/close tailgate, well-positioned tie-downs and LED bed lighting help take a load off while loading up.

RAMPED UP

If you load it, fun will come – with lightweight aluminium cargo ramps available from Jeep® Performance Parts, featuring a rubberized non-slip tailgate protector and jackknife-style folding for easy storage. Individual ramps sold separately.



Shown with dealer-installed towing equipment. Properly secure all cargo. Always tow within the vehicle's capacity.

SHOWN ABOVE, OFFERS 2721-KG MAXIMUM TOWING AND A 620-KG PAYLOAD WHEN PROPERLY EQUIPPED.

NO TOY LEFT BEHIND

AVAILABLE

TOWING

WHEN YOU PLAY ON EPIC PLAYGROUNDS,
YOU NEED A SOLID SUPPORT SYSTEM.
YOUR GLADIATOR BRINGS IT, DELIVERING
UP TO 2721 KG² OF PULLING POWER
BEHIND YOU SO YOU CAN GO ALL OUT
AND BRING IT ALL INTO YOUR WORLD.



Properly secure all cargo. Always tow within the vehicle's capacity.

SHOWN ABOVE, OFFERS 2721-KG MAXIMUM TOWING AND
A 620-KG PAYLOAD WHEN PROPERLY EQUIPPED.

TOPTIONS

Like no other truck out there, this one expands your world and lets the sunshine in. Go with the available lightweight, easy-to-remove Freedom Top® 3-Piece Modular Hardtop³ or the Premium Sunrider® Soft Top with its zipperless secure closure that easily glides to open. The Premium Sunrider Soft Top has outstanding durability and sound dampening.

AVAILABLE

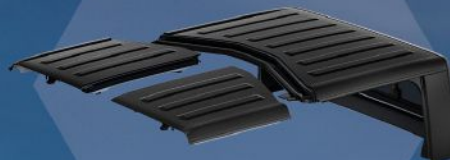
**PREMIUM
SUNRIDER®
SOFT TOP**



BLACK - Available

AVAILABLE

**FREEDOM TOP®
3-PIECE
MODULAR HARDTOP³**



BLACK - Available

AVAILABLE

**FREEDOM TOP®
3-PIECE
MODULAR HARDTOP³**



BODY-COLOUR - Available

READY FOR TAKEOFF



ALL-SEASON PASS TO **FREEDOM**



Shown with dealer-installed towing equipment.

Properly secure all cargo. Always tow within the vehicle's capacity.

RUBICON®

ADVENTURE-READY

THE POWER TO CONQUER ALL WORLDS WHILE BRINGING ALONG MORE TOOLS AND TACKLE HAS ARRIVED. THIS ONE-OF-A-KIND, 100% JEEP® TRUCK IS OUTFITTED WITH AN OUTSTANDING LIST OF CAPABILITY FEATURES.



FORWARD-FACING
OFF-ROAD TRAILCAM¹

REAR RED
TOW HOOKS

AVAILABLE
STEEL BUMPERS
(WINCH-CAPABLE IN FRONT)

FOX® 2.0
SHOCKS

OFF-ROAD TYRES

FRONT SWAY BAR
DISCONNECT SYSTEM

TRU-LOK® LOCKING
DIFFERENTIALS

ROCK RAILS

SKID PLATES

4:1 ROCK-TRAC®
HEAVY-DUTY
FULL-TIME
4WD SYSTEM

MADE FOR MASTERY

WHEN THINGS GET TECHNICAL

SELEC-SPEED® CONTROL

During off-road manoeuvres, Selec-Speed® Control helps drivers maintain a targeted speed of 1 to 8 kph while travelling in 4-LD. Drivers are not required to control the throttle or the brake, so they can better focus on their line. Included with automatic transmissions.

HILL START ASSIST

Travel uphill with confidence, knowing this standard feature will help keep Jeep® Gladiator from rolling backward when starting on an uphill gradient.





OFF-ROAD PAGES

Access real-time performance data and in-depth diagnostics. See how the Jeep® Gladiator is performing during challenging situations. Stats include data on axle lockers, pitch/roll angles, transfer case, coolant and oil temps, and much more. Standard.

NEW! FORWARD-FACING OFF-ROAD TRAILCAM¹

See what lies directly ahead of your vehicle with this front-facing camera.¹ The image displays dynamic tyre path lines on your radio screen, helping to navigate bolder boulders in time to react. A washing nozzle helps keep the lens clean and the view clear. Available.



OFF-ROAD+

The available Off-Road+ button activates the technology that extends the Jeep Brand's legendary 4WD capability. When engaged, Off-Road+ automatically deciphers the type of terrain Jeep Gladiator is operating on and makes adjustments to key systems, including throttle, Selec-Speed® Control, traction control and transmission shift mode, for optimal performance. If enabled in 4-HI, Off-Road+ tailors operation for higher-speed sand performance. If enabled in 4-LD, it adjusts operation for low-speed rock-crawling manoeuvres.



OFF-ROAD ELECTRONICS

The Gladiator Rubicon® gives you optimal control when you ride the trails. Its Electronic Front Sway Bar Disconnect System operates with the flip of a switch, allowing the front suspension to articulate up to 30 percent more at speeds below 28 kph. Tru-Lok® Locking Differentials in the front and rear help maintain forward momentum on challenging terrain.



CURB APPEAL

THIS GLADIATOR OVERLAND® TRUCK EARNs SECOND GLANCES WITH BODY-COLOUR FENDER FLARES, SIDE STEPS, AND BRIGHT GRILLE AND BUMPER ACCENTS. ADD THE STANDARD BODY-COLOUR FREEDOM TOP® 3-PIECE MODULAR HARDTOP® AND CRUISE THE SUMMER NIGHT IN COORDINATED STYLE.



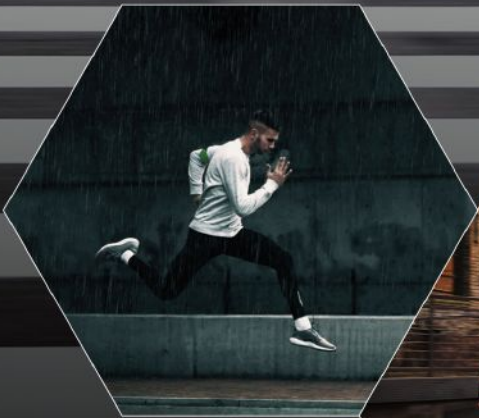
LET YOUR SPIRIT
GUIDE YOU



AN INSPIRED RIDE

RELAX AMONG THE LUXURIES INHERENT IN THE OVERLAND® BRAND, LIKE THE REFINEMENT OF AVAILABLE LEATHER TRIM, ACCENT STITCHING AND BRUSHED CHROME ACCENTS. SURROUND YOURSELF WITH TECHNOLOGY THAT INCLUDES A 7-INCH DRIVER INFORMATION DISPLAY, STANDARD UCONNECT® 4 NAV WITH 8.4-INCH DISPLAY AND DUAL-ZONE AUTOMATIC TEMPERATURE CONTROL (SHOWN), ASSURING THE COMFORT OF DRIVER AND FRONT PASSENGER AT ALL TIMES.

Properly secure all cargo.



3-POSITION SOFT-OPEN TAILGATE

The lightweight aluminium tailgate is damped for safe and smooth opening and closing. It can be set in three different positions, allowing you to securely transport items of various size, including 1.21 x 2.4-m sheet goods.



ESSENTIALS

Every Jeep® Gladiator comes equipped with integrated LED lights in the cargo bed, along with tie-down rings located at each corner.

CARGO ACCESSORIES INCLUDE:

- DECKED CARGO SYSTEM
- CARGO RAMPS
- BED CROSSRAILS
- BIKE CARRIERS
- KAYAK CARRIER
- SKI AND SNOWBOARD CARRIER
- CARGO BASKET AND NET





Properly secure all cargo.

NEVER AGAIN BE LIMITED BY
WHAT YOU CAN BRING ALONG.
EVERY CARGO-CARRYING
DETAIL HAS BEEN DESIGNED
TO MAXIMISE CONVENIENCE,
SIMPLICITY AND POSSIBILITY.

MORE THAN TOUGH ENOUGH

A traditional steel bed utilises steel crossmembers to reinforce the load floor while the aluminium tailgate is damped. Utility and versatility are maximised with strong, integrated tie-downs and under-rail bed lighting.

SPRAY-IN BEDLINER

This durable and attractive liner is available from the factory, helping to protect the cargo bed from whatever you throw at it. Available.

CARGO MANAGEMENT GROUP WITH TRAIL RAIL™ SYSTEM

Keep cargo organised, secure and easily at hand. Three embedded rails with adjustable tie-down sliders run along the inside of the ute tray and behind the cab. This Group also includes a lockable rear underseat storage compartment. Available.

ROLL-UP TONNEAU COVER

Keep the valuables stored in your ute tray covered and protected. Made of extremely durable, water-resistant material, this cover rolls out from the cab and secures at the tailgate. You can flip back the last section to allow loading of longer items while keeping the rest of the tonneau and tailgate closed and secure. Durable straps secure the tonneau in its rolled position. Available.



FREEDOM TOP® 3-PIECE MODULAR HARDTOP³

Lightweight and easy to take off, you can remove³ just the two front panels or all three sections. The rear glass incorporates a rear defroster and manual-sliding window. Also comes with a Freedom Panel storage bag and can be optioned with insulating headliner panels. Standard in body-colour on Overland and Black on Rubicon.

REMOVABLE³ DOORS

The side doors on Jeep® Gladiator are made of lightweight aluminium, which makes them extremely easy to remove³. A special tool is provided that you'll use to remove³ the door hinge pins. A built-in handle makes them easy to remove³ and carry too. Now, you're truly experiencing freedom.



NO OTHER UTE SHEDS ITS INHIBITIONS LIKE JEEP® GLADIATOR. IT HAS AN IMPRESSIVE LIST OF FEATURES THAT BRING THE OUTSIDE IN, PROVING THAT THIS PICKUP TRUCK TRULY IS OPEN FOR ANYTHING.



PREMIUM SUNRIDER® SOFT TOP

Choose your mood: remove³ just the rear window to retain shade from the sun, flip back the upper section for a fully open roof, or remove³ the entire top altogether. With a spring-assisted and zipperless design, Sunrider® allows you to become one with the sun or stars. Crafted from heavy-duty waterproof cloth material and available in Black. Premium fabric that is thick, rich in colour and easy to clean.

FOLDING WINDSHIELD³

Feel the wind on your face and get a clearer view of the trail by removing³ just four bolts, folding the windshield down and securing it with straps available from Mopar®.

DESIGNED FOR EASY TRANSFORMATIONS

Every open-air feature was developed with ease and convenience in mind so you can spend more time enjoying fresh air. That's why the windshield only requires four bolts to lower³ and why the doors have the size of the required Torx® bit debossed into the hinges. Jeep® Gladiator includes a tool kit and storage for all bolts under the rear seat. When you get the available Freedom Top®, a storage bag is included for the removable³ panels.

LET'S BE HONEST ... SOME FUN THINGS CAN'T FIT IN ANY UTE TRAY. SO PUT WHEELS ON THEM, OR UNDER THEM, AND TOW WITH STYLE AND CONFIDENCE IN A MADE-TO-PULL GLADIATOR TRUCK.

PARKVIEW® REAR BACK-UP CAMERA¹

Helps you align your hitch and see what you're doing while hooking up a trailer. You can also keep an eye on anything in tow while in motion. Standard.

TRAILER SWAY CONTROL (TSC)⁴

When you're towing valuable toys, it's critical to keep things under control. TSC⁴ helps improve handling should crosswinds or traffic become challenging. The system continuously monitors vehicle movement and adjusts brake pressure to individual wheels until you're moving safely forward once again. Standard.



3.6 PENTASTAR® V6 ENGINE

Load up, set your waypoint, and confidently take on every adventure over mountains, hills and valleys. This award-winning engine is designed to deliver powerful pull with welcome efficiency. Economies are realised via enhancements, including a two-step variable-valve lift system specifically designed to remain predominantly in low-lift mode until more power is demanded, when it will quickly move into high-lift mode for improved combustion. Its cooled exhaust-gas recirculation and innovative weight-reduction strategies also aid efficiencies and power output while maintaining the smooth performance that's a recognised hallmark of the Pentastar® brand.

8-SPEED AUTOMATIC TRANSMISSION

The launch ratios for all eight gears have been optimised, tuning this 8-speed transmission to the exact structure, size and weight of your Jeep® Gladiator. Advanced software adjusts performance on the fly, based on variables such as temperature, cornering, hill grades and full-time 4WD gears. Smooth and virtually seamless shifts, both up and down, deliver a consistently smooth ride. Standard.

WEATHERPROOF PUSH-BUTTON START

The standard push-to-start button is protected by a water-resistant shield, so you're able to start up and head out even if the weather outside accidentally comes inside.

REMOTE START⁵ Climb into a pleasantly pre-heated or pre-cooled Jeep Gladiator – 91-m range. Standard.

REMOTE PROXIMITY ENTRY

Keep the key fob in your pocket, and you can simply open the door, get comfortably seated with your foot on the brake, press the Start button and head out. Standard.





RUBICON®

THESE OFF-ROAD FEATURES ARE EXCLUSIVE TO THE ICONIC RUBICON® MODEL, MAKING IT ONE OF THE MOST WELL-EQUIPPED FACTORY 4x4 VEHICLES ON THE PLANET.

ROCK-TRAC® HEAVY-DUTY FULL-TIME 4WD SYSTEM

Rubicon® models ride with this extreme 4WD system. Its 4:1 low-gear ratio transfer case allows every Gladiator Rubicon model to crawl at a low speed for greater control, and increases the amount of torque available at the wheels. Standard only on Rubicon models.



STEEL BUMPERS Built with ultra-strong steel to take the punishment of the trails. The front bumper can accept a winch, features integrated LED fog lamps and has removable end caps to help manoeuvre through tight spots. Available on Rubicon models.



TRU-LOK® DIFFERENTIALS

Front and rear electronic-locking differentials deliver maximum torque to both wheels, maintaining forward momentum for the ultimate in 4WD traction. An instrument panel-mounted rocker switch can lock either the rear or both axles. Paired with Rock-Trac® 4WD system on Rubicon models.



Overseas model shown, Australian specification may differ.

FRONT SWAY BAR DISCONNECT SYSTEM

Flip a switch and the sway bar can be disconnected in 4-LO and 4-HI, allowing the front suspension to travel up to an additional 30 percent. It automatically reconnects at speeds above the 28-kph optimum level. Standard only on Rubicon models.

OFF-ROAD+ This advanced system automatically adjusts performance parameters for the terrain, whether you're driving in 4-HI (Sand/Mud) or 4-LO (Rock Crawling). Standard only on Rubicon models.

FOX® SHOCKS With a 50-mm-diameter aluminium body, the race-proven and factory-tuned precision valving provides a comfortable on-road ride and predictable off-road handling in even the toughest conditions. Standard only on Rubicon models.



SELECTABLE TIRE-FILL ALERT

When removing air from tyres for off-road situations, the system will chirp the horn when a pre-selected air-down pressure is reached. When adding air back in, it chirps the horn upon reaching the recommended pressure. Standard on Rubicon models.

FORWARD-FACING OFF-ROAD TRAILCAM¹

Mounted within the grille, provides an up-close view of the trail directly in front of your vehicle, helping you navigate over and around obstacles. Standard on Rubicon models.



SELEC-TRAC® FULL-TIME 4WD SYSTEM

For off-road and all-weather capability, this full-time system divides torque between front and rear axles for tough traction. The transfer case shifts smoothly. For serious rock-crawling, its 2.72:1 low range ensures confidence. Standard on Overland® models.

OFF-ROAD PAGES

Access real-time performance data, like suspension travel or keeping an eye on your pitch and roll. In-depth vehicle diagnostics, including wheel turn and transmission temperature, all help to provide an optimised experience. Standard.

HILL START ASSIST Works to prevent Gladiator from rolling when starting on an uphill gradient. Standard.

UNDER ARMOR Heavy-gauge steel rock rails provide additional rocker panel and bed protection on every Rubicon® model, while up to four skid plates/bars, made from lightweight high-strength steel, protect the underbody. Standard.

SELEC-SPEED® CONTROL

Manages vehicle speeds of 1 to 8 kph in 4-LO while traversing off-road without requiring the driver to control the throttle or the brake, allowing the driver to focus on steering the vehicle in off-road situations. Included with 8-speed automatic transmission.

TOW HOOKS Every Gladiator ute gets at least one in back. Rubicon model hooks are painted Red.

TRAIL RATED® Every Gladiator ute rolls off the line with the goods to roll over just about any terrain you may encounter. Each one carries the Trail Rated® designation as proof of rigorous design specs and testing while offering an unmatched list of standard and available 4x4 gear.



U.S. Uconnect® screen shown.



Uconnect® 4 NAV WITH 8.4-INCH DISPLAY

A large high-definition touchscreen offers smartphone integration, navigation and real-time stats with Off-Road Pages. Standard.

7-INCH DRIVER INFORMATION DISPLAY

Front and centre in the gauge clustre, you'll find a wealth of scrollable vehicle data in full colour that you safely control via steering-wheel buttons. Standard.

DUAL-ZONE AUTOMATIC TEMPERATURE CONTROL

Constantly adjusts air temperature inside the cabin to create separate customised environments for driver and front passenger. Standard.

INSPIRED BY JEEP® BRAND HERITAGE, THIS INTERIOR IS ALSO INSPIRED BY MODERN DESIGN, FILLED WITH PREMIUM MATERIALS AND CREATURE COMFORTS AND INFUSED WITH THE LATEST LEAPS IN MUST-HAVE TECHNOLOGY.



HEATED FRONT SEATS

You have three adjustments to choose from for each seat, so you can tailor your level of warmth to weather conditions and personal preference. Available.

HEATED STEERING WHEEL

Set this optional feature to automatically warm the full 360° circumference of the wheel when temps dip below 4°C. Available.

HEATED MIRRORS

Keep ice from building up and blocking your view with the safety and security of heated side mirrors. Standard.

ALPINE® PREMIUM AUDIO SYSTEM

Experience immersive sound with nine speakers that include an overhead sound bar, a rear subwoofer and a 552-watt amplifier. Standard.



PORTABLE BLUETOOTH® SPEAKER

Tucked behind the rear seat is a removable, weather-resistant, 254 x 139 x 69-mm Bluetooth® speaker you can take outside the cabin. Control buttons allow volume control, play/pause and pairing. A USB charging port and auxiliary cable input extend functionality. Resists dust as well as water (for up to 30 minutes in up to 1 m of depth). Great for tailgating and camping. Available.

WASH-OUT INTERIOR

Not only is the carpet weather-resistant, but it can be removed to reveal drain plugs that, when removed, allow the floor to be easily hosed out. Standard.

LOCKABLE GLOVE BOX AND CENTRE CONSOLE

These locking compartments are large and provide essential peace of mind. Standard.

LOCKABLE BEHIND-SEAT STORAGE

The rear seatbacks can be locked upright using the vehicle key, providing secure and illuminated storage behind the seat, especially helpful when the top is off and the doors are removed.³ Standard.

LOCKABLE REAR UNDER-SEAT STORAGE BIN

Hidden under the rear seat, this lockable and removable box offers out-of-sight storage for plenty of gear. It includes two independently locking doors, movable dividers and a carry handle. Available.

JEEP® UTILITY GRID SYSTEM

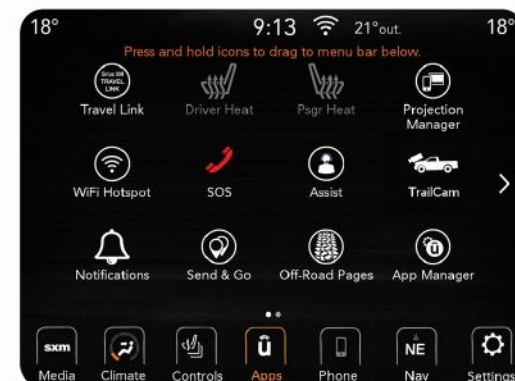
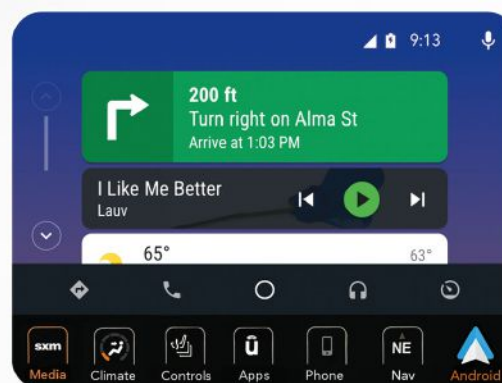
Built into the seatbacks of Rubicon® are exclusive grids that support the addition of flexible storage. Strong nylon-woven straps will accommodate standard MOLLE-style bags. Standard on Rubicon models.



Properly secure all cargo.



Display your favorite iPhone® apps right on your Uconnect touchscreen. Access your iTunes® library, call anyone in your contacts list or just ask Siri® to help you out while you drive. Get directions, make calls and send messages, and connect to Apple Music, all without pausing your journey. Standard.



Bring the best of Google along with you in your Uconnect system. Easy touchscreen navigation and voice recognition let you access Google Play Music, get directions with Google Maps™ and ask the Google Assistant any question on the go, at any time. Standard.



Uconnect® BRINGS A WIDE RANGE OF COMMUNICATION AND ENTERTAINMENT SERVICES STRAIGHT INTO YOUR VEHICLE, ALL BUNDLED TOGETHER WITHIN A ROBUST SYSTEM WITH SO MANY CONVENIENT OPTIONS TO CHOOSE FROM.

NAVIGATION Easily locate your next off-road playground. Uconnect® employs GPS Navigation for audible turn-by-turn directions, and detailed 3-D maps help ensure you arrive on time. Standard.

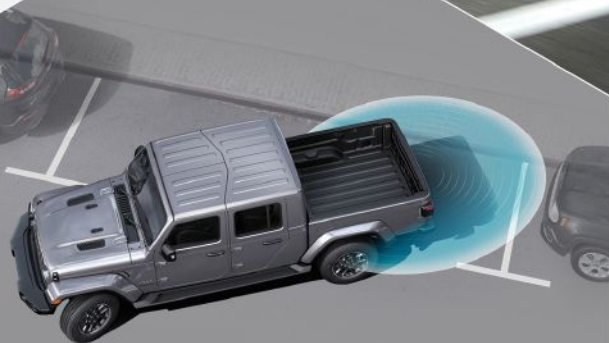
TOUCHSCREEN CONTROLS

Set temperature controls, activate heated seats and steering wheel, and so much more – all from the touchscreen. A drag-and-drop menu allows you to highlight your top six favorite features and services so they're always in sight on your 8.4-inch Uconnect touchscreen display. Standard.

PHONE/TEXT Pair up to 10 Bluetooth® enabled phones. See a visual prompt of incoming calls or texts and send an automated reply.



U.S. Uconnect® screen shown.



JEEP® GLADIATOR ENVELOPS YOU WITH MORE THAN 80 STANDARD AND AVAILABLE SAFETY & SECURITY FEATURES. REMAIN CONFIDENT DRIVING IN ALL WEATHER CONDITIONS, THANKS TO THE STRENGTH OF A DESIGN THAT EMPLOYS BOTH PASSIVE AND ACTIVE SYSTEMS.

BLIND SPOT MONITORING¹⁰ AND REAR CROSS-PATH DETECTION¹ Maintain a safe perimeter with the help of these sensor systems. Chimes and illuminated icons notify you when side or rear blind spots are encroached. Standard.

PARKVIEW® REAR BACK-UP CAMERA¹ When the vehicle is in Reverse, the Uconnect® screen displays a wide-angle view of what's immediately behind your vehicle. On-screen dynamic grid lines help you see your back-up path. Standard.

PARKSENSE® REAR PARK ASSIST SYSTEM¹ Works in tandem with ParkView® Rear Back-Up Camera¹ to bring previously hidden objects to your attention with an audible warning so you have time to react. Standard.

ELECTRONIC STABILITY CONTROL (ESC)⁴ A vehicle-wide network of safety sensors helps maintain vehicle control, providing instant aid should it detect you veering off your intended path. ESC⁴ coordinates a range of safety systems, sending them into action when needed. Standard.

TRAILER SWAY CONTROL (TSC)⁴

Crosswinds and traffic hold no sway over you and your payload. As part of ESC⁴, TSC⁴ helps keep you and the toys you tow safely on course. Standard.

NEXT-GENERATION AIR BAGS¹¹ When a crash is detected, these air bags¹¹ deploy nearly instantaneously, providing occupant protection that's matched to crash severity. Standard.

SUPPLEMENTAL FRONT SEAT-MOUNTED SIDE AIR BAGS¹¹ Deploying from the outboard side of each front seat, these air bags¹¹ enhance the protection of the driver and front-seat passenger in certain impacts. Standard.

FORWARD COLLISION WARNING PLUS¹² Uses radar and sensors to video-detect when you may be approaching another vehicle too rapidly. An audible and visual alert is given, or the system assists the driver in mitigating a potential collision. Standard.

ENHANCED ACCIDENT RESPONSE SYSTEM (EARS) This system makes it easier for emergency personnel to see and reach occupants in the event of an accident, turning on interior lighting, flashing hazard lamps and unlocking power doors after air bag¹¹ deployment. Standard.

ADAPTIVE CRUISE CONTROL WITH STOP¹³

The system automatically adjusts cruising speed to maintain a preset distance between you and the vehicle ahead and can bring your Gladiator to a complete stop without driver intervention to help avoid a collision. Standard.

LED LIGHTING GROUP

Maintain a unique – and safe – presence after dark, and add extra visual security during the day. The traditional round headlamps are equipped with unique daylight running lamps (DRLs), and the Group's LED headlamps, taillamps and front LED fog lamps help enhance visibility during inclement weather. Standard.

ULTRASONIC AND ANTI-TILT SECURITY SYSTEM

The alarm is activated by virtually any unauthorized movement, such as wheel removal or towing; illegal opening of a door, hood or swing gate; ignition start; cutting of battery leads; or motion inside the cabin. Standard.

SENTRY KEY® ENGINE IMMOBILISER

A unique, embedded key code matched only to your vehicle helps keep your Jeep® Gladiator safe and secure where you parked it. Standard.

BODY STRENGTH

The exceptionally solid safety cage consists of high-strength steel paired with lightweight aluminium, making every Gladiator lighter in weight while still providing a very strong chassis. Standard.

FORWARD-FACING OFF-ROAD TRAILCAM¹

This front-mounted camera gives you a close-up view of the trail directly in front of your Gladiator truck so you can spot challenging objects in time to outmanoeuvre them. A "Clean Camera" soft key in the radio activates a wiper that helps keep the lens free of dirt. Available.

HILL START ASSIST (HSA)

Take to the hills fully loaded with confidence and a bed filled with goods. HSA works to prevent your vehicle from rolling when starting on an uphill gradient. Standard.

UCONNECT® INTEGRATED VOICE COMMAND WITH BLUETOOTH®

Multitasking is the way of today's world, even when you're on the road. This important safety and security feature allows drivers to safely send, reply or listen to a text, take or make phone calls, request detailed information and more while keeping both hands on the wheel. Standard.

ANTILOCK BRAKE SYSTEM (ABS) WITH HEAVY-DUTY BRAKES

Senses and helps prevent wheel lockup while braking, offering improved steering control in slippery conditions. When rough road is detected, ABS adjusts to maximise braking on a loose surface. Standard.

BRAKE-LOCK DIFFERENTIAL SYSTEM

Allows the vehicle to maintain forward motion if up to three wheels lose traction by selectively and aggressively applying brakes to the spinning wheels. Standard.



AS FEATURED THROUGHOUT THIS BROCHURE, A COMPREHENSIVE RANGE OF GENUINE ACCESSORIES ARE AVAILABLE IN AUSTRALIA FOR PERSONALISING YOUR GLADIATOR. [VIEW THE FULL RANGE WITH PRICING ON JEEP.COM.AU](http://JEEP.COM.AU)

TOWBAR What would a lifestyle truck be without a towbar that's meets our rigorous testing requirement and is backed by the factory?.

ALL-WEATHER RUBBER FLOOR MATS Although standard on Rubicon variants, these mats have been designed alongside the vehicle, because even an Overland is going to get muddy.

1941 DESIGN - BONNET DECAL Jeep was born in the heart of battle. Honour our heritage with this bonnet decal.

GRAB HANDLES Convenient handles to assist with climbing into the Jeep as well as a way to safely hang on while travelling rough terrain. You're not off-road until your passengers need these.

ROOF RACK, CROSS RAILS AND CARRIER SYSTEMS Help yourself to a roof rack or cross rails and immediately your Gladiator is even more well equipped to handle any lifestyle you to choose to lead. A range of carrier systems are available for easy attachment.



Properly secure all cargo.



ALTHOUGH READY FOR ANY ADVENTURE AS STANDARD, THE ACCESSORIES WITHIN THESE LIFESTYLE PACKS CAN PERSONALIZE YOUR GLADIATOR FOR YOUR SPECIFIC LIFESTYLE.



BLACK PACK The darker tones of these accessories enhance both the style and functionality of the Gladiator. Includes Black Front Grille, Door Dill Guards, Black Locking Fuel Cap, All-Weather Rubber Floor Mats, American Flag Bonnet Decal.

ESCAPE PACK The pack to transform your Gladiator into the perfect companion for those quick escapes on the weekend. Includes Grab Handles - Front Cargo Bed Storage System, Cargo Bed Cross Rails Kit, Thule Circuit 526 fork-Mount Bike Carrier and Roof Rack Kit.

EXPLORER PACK Gear up your Gladiator for your next adventure with the Explorer Pack. Includes Towbar Kit, Side Window Air Deflectors, Door Sill Guards - Stainless Steel, Grille & Winch Guard, Tubular Side Steps - Chrome, and Moulded Splash Guards - Front.

IN THE NAME OF
ADVENTURE



Properly secure all cargo.

Jeep®

(1) Always look before proceeding. An electronic drive aid is not a substitute for conscientious driving. Always be aware of your surroundings. (2) When properly equipped. (3) Be sure to follow all instructions in the Owner's Manual for removal of top and doors and lowering of windshield. Driving with the doors off and windshield down is for off-road use only. (4) Always drive carefully, consistent with conditions. Always wear your seat belt and obey traffic laws. (5) Check state and local laws regarding the use of remote start systems. (6) Requires compatible iPhone. See dealer for phone compatibility. Data plan rates apply. Vehicle user interface is a product of Apple. Apple CarPlay is a trademark of Apple Inc. iPhone is a trademark of Apple Inc., registered in the US and other countries. Apple terms of use and privacy statements apply. (7) Requires an iPhone with Siri. Certain features are not available while the vehicle is in motion. iPhone must be within active cellular range. Customer's existing iPhone data rates apply to Internet-supported features. (8) To use Android Auto on your phone screen, you'll need an Android phone running 5.0 or higher and the Android Auto App. Android and Android Auto are trademarks of Google LLC. (9) The Uconnect Phone requires a mobile phone equipped with the Bluetooth Hands-Free Profile. To check phone compatibility, please visit www.UconnectPhone.com. (10) Always check visually for vehicles prior to changing lanes. (11) Always sit properly in designated seating positions with seat belts securely fastened at all times. (12) This system is solely an alert system for the front of the vehicle that does not take any actions to change vehicle dynamics to avoid a collision, not a substitute for active driver involvement. The driver must remain aware of traffic conditions and be prepared to use brakes to avoid collisions. (13) This system is a driver convenience system, not a substitute for active driver involvement. The driver must remain aware of traffic conditions and be prepared to use brakes to avoid collisions.

©2020 FCA US LLC. All Rights Reserved. Jeep, Mopar, the Jeep grille, Freedom Top, Gladiator, Overland, ParkSense, ParkView, Pentastar, Rock-Trac, Rubicon, Selec-Speed, Selec-Trac, Sentry Key, Trail Rated, Tru-Lok and Uconnect are registered trademarks and Send & Go, TrailCam and Trail Rail are trademarks of FCA US LLC.

Airstream is a registered trademark of Airstream Inc. All rights reserved. Alpine and the Alpine logo are registered trademarks of Alpine Electronics, Inc. All rights reserved. Apple, Apple Music, iPad, iPhone, iTunes and Siri are registered trademarks and Apple CarPlay is a trademark of Apple Inc. Bluetooth is a registered trademark of Bluetooth SIG, Inc. Bridgestone and any Bridgestone products or service names are trademarks or registered trademarks of Bridgestone Corporation. Falken is a registered trademark of Sumitomo Rubber Industries, Ltd. FOX is a registered trademark of Fox Factory, Inc. Google, Android, Android Auto, Google Play, Google Maps, YouTube and other related marks and logos are trademarks of Google LLC. SiriusXM Connected Vehicles Services Inc., Sirius, XM, SiriusXM and SiriusXM Guardian and all related marks and logos are trademarks of SiriusXM Radio Inc. Spotify is a registered trademark of Spotify AB. Sunrider is a registered trademark of Bestop, Inc. Torx is a registered trademark of the Camcar Corporation a division of Textron Industries.

This brochure is a publication of FCA US LLC. All product illustrations and specifications are based upon current competitive information at the time of publication approval. FCA US LLC reserves the right to make changes from time to time, without notice or obligation, in prices, specifications, colours and materials, and to change or discontinue models which are considered necessary to the purpose of product improvement or for reasons of design and/or marketing. Jeep is a registered trademark of FCA US LLC.

Jeep is a registered trademark of FCA US LLC.