

# OUTBACK

MODEL YEAR 2014



ALL 4 THE DRIVER™



**SUBARU**

BRING ON STORMS.  
BRING ON HAIRPINS.  
BRING ON GRAVEL AND DIRT ROADS.  
GET OFF THE BEATEN TRACK.  
DISCOVER SOMEWHERE NEW.

# FREEDOM IS IN OUR DNA

→ UNRAVEL OUR DNA AT [SUBARU.COM.AU](http://SUBARU.COM.AU)





MODEL SHOWN: Outback 3.6R Premium  
Full Outback body kit fitted

# SUBARU DNA

ALL 4 THE PERFORMANCE. THE SAFETY. THE RETAINED VALUE

Our DNA is what makes every Subaru a Subaru. It's our constant focus on Performance, Safety and protecting the Retained Value of your Subaru that makes Subaru distinct from any other car brand. Our DNA delivers you, the Driver, the confidence to exploit your Freedom everyday.

## POISED PERFORMANCE

Subaru has long been highly regarded for its performance technologies. From the rally circuit to the highway, Subaru's engineering and driving characteristics are focused on delivering a driving experience unlike any other, handling road and weather conditions with ease, control and comfort.



### → SYMMETRICAL ALL-WHEEL DRIVE

Delivers outstanding grip, balance and control in a variety of road conditions when combined with Subaru's horizontally-opposed Boxer engine technology and a symmetrical drivetrain.



### → HORIZONTALLY-OPPOSED BOXER ENGINE

Ensures smooth power delivery, with less vibration and its low centre of gravity gives optimum balance and control to you, the Driver.

## SUPERIOR SAFETY

Impressive safety credentials have earned Subaru the maximum five-star ANCAP occupant safety rating, plus freedom from worry for you, thanks to Subaru's -



### → VEHICLE DYNAMICS CONTROL SYSTEM



### → RING-SHAPED PASSENGER SAFETY CELL

### → DUAL FRONT, DUAL FRONT SIDE, CURTAIN AND DRIVER'S KNEE AIRBAGS



### → ABS, EBD AND 4-WHEEL DISC BRAKES

## RETAINED VALUE



Freedom comes from knowing that you've made a great investment. Every Subaru comes into the world as the best car it can be, and then we help you to keep it that way. We promise to protect your freedom by looking after the performance, safety and the retained value of your vehicle. With our dedicated Subaru Service Centres and microscopic DATADOT<sup>TM</sup> theft protection, your car is in good hands for many years to come.



**ALL OF THIS ADDS UP TO A GREATER EXPERIENCE FOR YOU –  
THE OUTBACK DRIVER. SUBARU. ALL 4 THE DRIVER.™**



MODEL SHOWN: Outback 2.0D Premium  
Full Outback body kit fitted

# OUTBACK, THE DRIVER'S SUV

NOT ALL SUV'S ARE CREATED EQUAL. SOME MAY LOOK THE PART, BUT DEEP DOWN THEY'RE JUST NOT UP TO THE TASK. BUT THE OUTBACK IS THE REAL THING - A TRUE, MUD IN ITS BLOOD ALL-WHEEL DRIVE SUV AND DRIVER'S CAR ALL IN ONE. IN FACT THE MOMENT YOU TURN THE KEY, YOU JUST KNOW IT'S BEGGING FOR A CHANCE TO PROVE ITSELF.

With its legendary Boxer engine delivering a low centre of gravity for greater driving enjoyment, renowned Subaru All-Wheel Drive system and 213mm of ground clearance the Outback's at home in the corners and on gravel. Years of testing and competing in Australian conditions have helped refine the Subaru Outback's driving dynamics while ensuring it's an SUV like no other - a true driver's car with the ability to tackle the road, dirt,

gravel and mud. Every facet of the Outback has been designed to give you the confidence to do more. From the safety enhancements that proudly shape every Subaru, to the intelligent technology that is All 4 the Driver™. The bold exterior says everything you need to know about Outback - it's the real thing - capable, robust, reliable and thrilling. Don't surrender to a pretender, enjoy every corner and take on any adventure with the real thing.

→ EXPLORE OUTBACK AT [SUBARU.COM.AU](http://SUBARU.COM.AU)



#### TOP TO BOTTOM:

- Factory fitted option available on all models, for further information please contact your Subaru Retailer.
- Self-levelling Xenon low beam headlights.<sup>1</sup>
- Electric sunroof.<sup>2</sup>
- Smart key entry.<sup>1</sup>

1. Outback 3.6R Premium only. 2. Outback 2.5i Premium, Outback 3.6R Premium and Outback 2.0D Premium models only.



MODEL SHOWN: Outback 3.6R Premium.

# YOU'LL BE RAPT

WRAP YOURSELF IN OUTBACK'S LUXURIOUS INTERIOR. USE EVERY GADGET, USE EVERY INCH. PACK MORE INTO THE OUTBACK AND GET MORE OUT OF IT. SEE IT AS A REFLECTION OF YOUR LIFE - THE MORE YOU PUT IN, THE MORE YOU GET FROM IT.

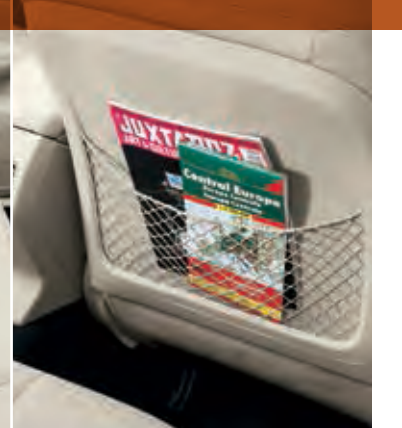
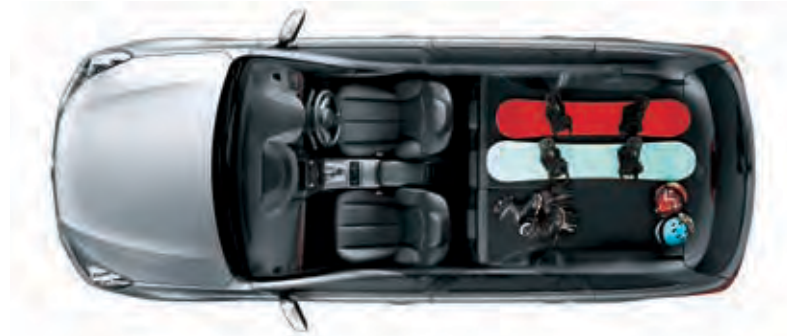
From the ski fields to your favourite family beach, the Outback will get you out there having more fun.

With generous leg, shoulder and head room, coupled with reclining rear seats, you can stretch out and enjoy the ride. The one touch lever lets you quickly fold the rear seats in a 60/40 split configuration. Or fold the entire rear row completely flat

for a generous cargo area. The pull-out cargo tie down points and cargo luggage hooks will help keep all your gear in place no matter how rugged the trip, while the retractable cargo security blind keeps it all out of sight. Stylish roof rails also give you the option of adding additional cargo carrying accessories. Head down the street or across the country in comfort in the driver's SUV.

→ GET COMFORTABLE AT [SUBARU.COM.AU](http://SUBARU.COM.AU)

INSET IMAGES CLOCKWISE TOP TO BOTTOM:  
→ Generous and flexible cargo carrying capacity.  
→ 60/40 split folding rear seats.  
→ Seat back nets - driver and front passenger seats.  
→ Fold down rear armrest with cup holders.



# GET LOST ON PURPOSE

IT'S YOUR LIFE, SO CHOOSE YOUR DESTINATION. OR MAKE IT UP AS YOU GO ALONG. SURROUNDED BY THE LUXURY OF THE OUTBACK, ONE THING IS FOR CERTAIN - YOU WON'T BE IN ANY RUSH TO GET THERE.

Outback puts the driver in control with steering wheel mounted cruise, audio and *Bluetooth*<sup>®1</sup> controls designed to allow the driver to remain focused on the road ahead. The position of the leather steering wheel can also be adjusted to suit the preference of different drivers, while the simple, ergonomic instrumentation is both stylish and practical. Dual zone climate control air-conditioning lets the driver and front passenger select their own level of comfort

and have the convenience of an in-dash CD player with MP3/iPod compatibility and a handy USB connection. Deep door pockets front and rear include integrated bottle holders and the clever use of an electronic handbrake means that there is more space between the front seats. The Outback 3.6R Premium model make the driver's job even easier, with push start ignition plus smart key, rain sensing wipers and dusk sensing, self levelling Xenon headlights.

→ BE ENTERTAINED AT [SUBARU.COM.AU](http://SUBARU.COM.AU)

TOP TO BOTTOM:

- McIntosh entertainment system with a single CD/DVD player, 10 speakers, satellite navigation and rear view reverse camera - Outback 3.6R Premium.
- iPod/MP3 compatibility lets you take your favourite music with you.
- Steering wheel mounted audio and *Bluetooth*<sup>®2</sup> controls.
- Multi-information in-dash satellite navigation system with single CD player and rear view reverse camera<sup>2</sup>.
- Single in-dash CD Player with rear view reverse camera, auxiliary jack and USB connection - Outback 2.5i.

1. *Bluetooth*<sup>®</sup> is a registered trademark of Bluetooth SIG Inc. System operation ability is subject to *Bluetooth*<sup>®</sup> wireless technology specification of individuals phone.

2. Outback 2.5i Option Pack, Outback 2.5i Premium, Outback 2.0D and Outback 2.0D Premium models only.





26° 82% 12:00

250 m  
Serdar pt  
439 km  
6:56  
3:22

INFO MAP TYPE/TRACK AUDIO SYNC  
1 2 3 4 5 6  
VOL PUSH  
23.5 AUTO 22.0  
K.C. MODE

MODEL SHOWN: Outback 2.5i Premium

# UNLEASH THE POWER

AFTER A WEEK CRUISING DOWN CITY MOTORWAYS AND CLINGING TO EVERY CORNER, THE OUTBACK IS RESTLESS FOR ADVENTURE. SO TAKE IT OUT OF THE CITY AND TAKE IT OFF THE BEATEN TRACK. THIS IS WHERE SOME SUVs GET NERVOUS. THIS IS WHERE THE OUTBACK GETS REAL.

Fun to drive and with tenacious traction that grips through the corners, the Outback strikes the perfect balance between on-road comfort and off-road adventure. Responsive steering and handling any driver will love and an electronic

parking brake with hill hold providing additional support and control. The smooth suspension has been tuned to Australian conditions and the Outback has the power to take on terrain that you haven't even discovered yet.

- Choose the model and transmission to suit your driving style - six-speed manual, Lineartronic™ Continuously Variable Transmission (CVT) or five-speed automatic with Subaru Intelligent Drive (SI-DRIVE).
- Outback 3.6R Premium features SI-DRIVE which regulates key engine functions to offer three distinctive driving modes in one car. Intelligent (I) mode for everyday, Sport (S) more for enhanced acceleration and all-round sporty performance or Sport Sharp (S#) mode for a thrilling drive.

→ **DISCOVER THE POWER AT [SUBARU.COM.AU](http://SUBARU.COM.AU)**



#### TOP TO BOTTOM:

- Stylish, ergonomic instrument cluster<sup>1</sup>.
- Electronic parking brake.
- Subaru Intelligent Drive (SI-DRIVE) lets you choose your driving mode - Outback 3.6R Premium.
- Paddle gear shift on steering column (CVT and automatic models).

1. Outback 2.5i Option Pack, Outback 2.5i Premium, Outback 3.6R Premium and Outback 2.0D Premium models only.





OUTBACK

MODEL SHOWN: Outback 2.5i Premium  
Full Outback body kit fitted



# THINK OUTSIDE THE BOXER

SOLID. BRAVE. PROVEN. SUBARU'S BOXER ENGINE DESIGN LIES AT THE HEART OF THE OUTBACK. HOWEVER THE INNOVATION DOESN'T STOP THERE. EVERY INCH OF THE OUTBACK IS A TRIBUTE TO THE BOLDNESS OF SUBARU'S VISIONARY ENGINEERS.



- Compact horizontally-opposed Boxer engine.
- Outback 2.5i and Outback 2.5i Premium with four-cylinder DOHC petrol engine with single Active Valve Control System (AVCS).
- Outback 3.6R Premium with six-cylinder DOHC petrol engine with Dual Active Valve Control System.
- Outback 2.0 Diesel and Outback 2.0 Diesel Premium with turbocharged, four-cylinder DOHC diesel engine.
- Electronic Throttle Control (ETC).

Consistent across the Outback range is the famous Subaru Boxer engine that has been designed to sit lower and flatter in the engine bay than traditional engines. Due to this unique design it delivers less noise and vibration to the cabin, while the lowered centre of gravity improves stability, cornering and traction with the road. Coupled with the Outback's symmetrical drivetrain, this configuration delivers superior handling confidence, better balance, smoothness and ultimately, outstanding driver enjoyment. Just keep it to yourself, we'd hate for other SUV owners to know what they're missing out on.

The intelligent drive systems incorporated into the Outback include ETC which seamlessly translates commands from the driver's right foot to automatically select the optimum throttle position for an effortless performance. The ETC system also considers the environment, optimising exhaust gas emissions and fuel economy.

Each petrol engine in the Outback range has also been finely tuned to deliver optimum fuel economy, power and torque, via Subaru's Single and Dual Active Valve Control System.

→ [GET THE FACTS AT SUBARU.COM.AU](http://SUBARU.COM.AU)

# GO FURTHER, DO MORE



FILL UP AND PULL OUT. LEAVE THE LAST ROADHOUSE IN YOUR DUST. WITH A FULL TANK UNDER ITS BELT, THE OUTBACK DIESEL IS READY TO ESCAPE. THE GRUNTY PERFORMANCE AND LEGENDARY FUEL ECONOMY ALL ADD UP TO A DIESEL THAT'S ALL 4 THE DRIVER.™

Whether you're exploring this wide brown land or roaring down the freeway, the turbocharged horizontally-opposed Boxer diesel engine means less stops and more fun. With outstanding fuel economy, and an extraordinary driving range, the Outback is capable of travelling over 1,000km<sup>1</sup> on a single tank. All while caring for the environment, by meeting EURO5 emissions standards.

The four-cylinder Double Overhead Cam engine delivers a spirited performance with strong pulling power. The six-speed manual transmission lets you effortlessly select the right gear for the situation while the Lineartronic™ CVT automatic gearbox delivers a seamless and responsive drive. With its distinctive bonnet scoop, the sporty Outback Diesel comes in two variants, Outback 2.0D and Outback 2.0D Premium.

→ GO THE DISTANCE AT [SUBARU.COM.AU](http://SUBARU.COM.AU)

1. Based on a highway cycle of 5.6L per 100km and fuel capacity of 65L tested in accordance with a ADR81/02.





OUTBACK

MODEL SHOWN: Outback 2.0D Premium  
Full Outback body kit fitted



MODEL SHOWN: Outback 2.5i Premium  
Full Outback body kit fitted





# ALL WHEELS, ALL OF THE TIME

SCIENTIFICALLY CONCEIVED.  
RIGOROUSLY TESTED FOR THE  
LAST 40 YEARS. SUBARU'S ICONIC  
SYMMETRICAL ALL-WHEEL DRIVE  
SYSTEM IS THE PINNACLE OF  
SUPERIOR JAPANESE TECHNOLOGY.  
TECHNOLOGY THAT SETS YOU FREE.



## CONFIDENCE UNDER ALL CONDITIONS

The sign of a true performer is good balance. And when it comes to driving a Subaru, superior balance equals superior vehicle control. That's why Subaru has built its reputation on its Symmetrical All-Wheel Drive (SAWD) system and a symmetrical drivetrain that delivers an innate sense of balance from the ground up.

SAWD delivers engine power to all four wheels simultaneously. Having power distributed across all four wheels, rather than two on conventional vehicles, gives you twice the grip capacity. So under acceleration there's more grip for cornering and more capacity to keep on track through the corners. Ultimately, having the driving force spread across all four wheels means less wheel slip and greater control and confidence under all conditions.

The traction and control delivered by SAWD is further enhanced by the Outback's suspension. The wide track rigid front suspension produces more responsive steering and cornering, while the double wishbone rear suspension ensures a smooth, controlled ride with outstanding handling, comfort and quietness.

For you, the driver, it all adds up to an agile and responsive vehicle with optimum balance, control and confidence in a variety of driving conditions.

→ FIND OUT MORE ABOUT SAWD AT [SUBARU.COM.AU](http://SUBARU.COM.AU)

# SAFETY AS ACTIVE AS YOU

THE LIFE YOU'VE LONGED FOR IS ACTIVE, ADVENTUROUS AND UNPREDICTABLE. THE BEST TIMES ARE OFTEN THOSE THAT HAPPEN WHEN NOTHING'S PLANNED. THAT'S BECAUSE SUBARU HAS PLANNED EVERYTHING FOR YOU. BUILDING ACTIVE AND PASSIVE SAFETY INTO EVERY ASPECT OF YOUR OUTBACK.



## CRUNCH TIME

Because you never know what's around the corner, Subaru has made safety an integral part of every vehicle. By incorporating the very latest safety technology, every vehicle in the Subaru range proudly carries the maximum five-star ANCAP\* crashworthiness rating for occupant safety. The ring-shaped passenger cell is made from high-tensile strength steel, which directs impact energy around the passenger compartment, not through it.

Thanks to Subaru's electronic driver assist system, called Vehicle Dynamics Control (VDC), a range of stability and braking technologies step in to maintain safety in extreme situations. By automatically acting on information transmitted from a sophisticated array of sensors, the factors influencing the Outback's stability are constantly monitored to help the driver stay in control.

Subaru Vehicle Dynamics Control incorporates:

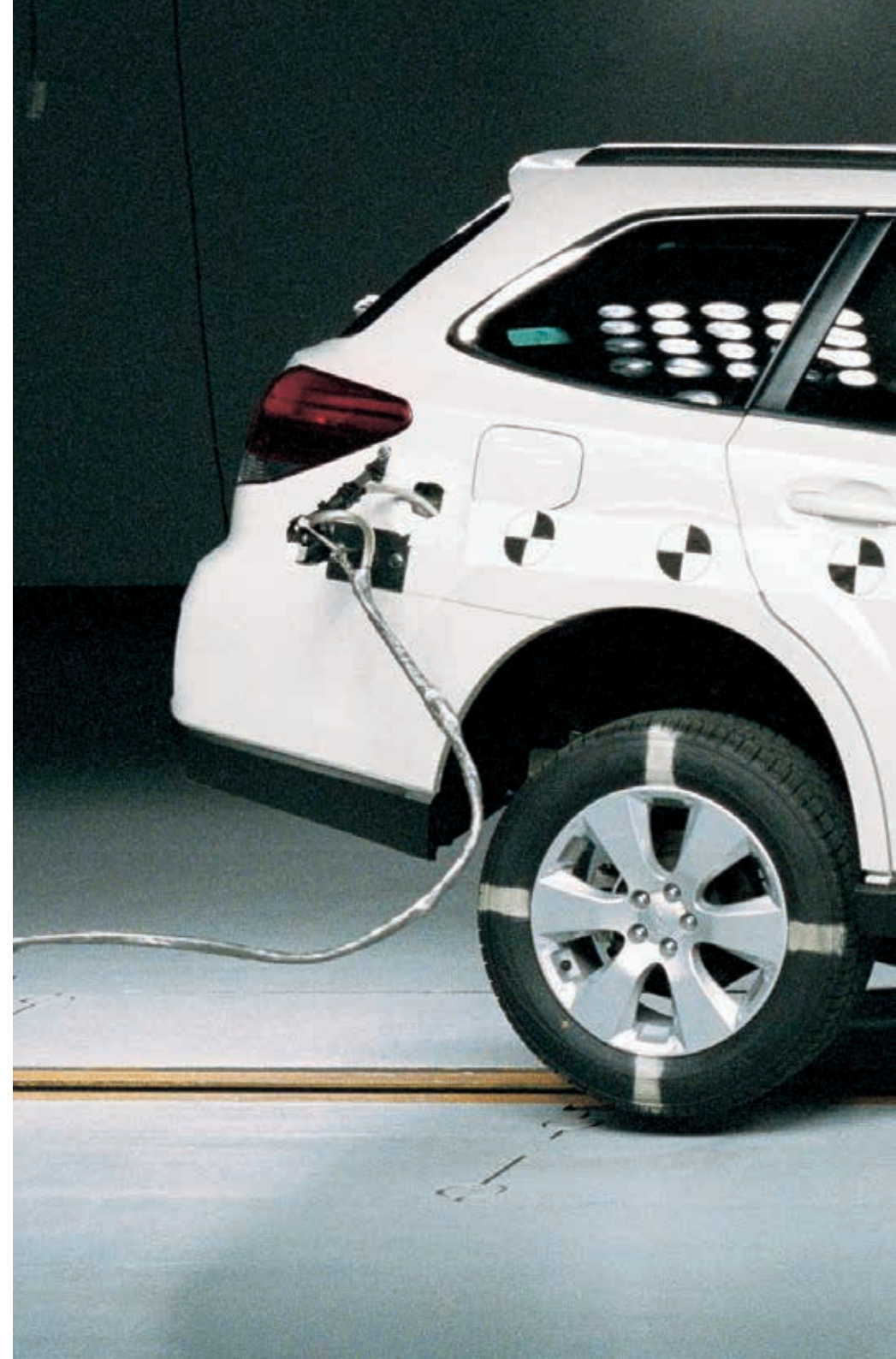
- Electronic Stability Control (ESC)
- Traction Control System (TCS)
- TCS Limited Slip Device (LSD)
- Anti-lock Braking System (ABS)
- Electronic Brakeforce Distribution (EBD)
- Brake Assist

Active safety features on the Outback are complemented by an optimum blend of passive safety, designed to enhance driver and passenger protection:

- The Boxer engine sits low in the engine bay to help protect occupants by sliding below the cabin - not into it - in the event of a severe frontal collision
- Ring-shaped passenger safety cell combines rigid reinforced sections with crumple zones designed to absorb impact energy and reduce injury
- Seven SRS airbags - dual front, dual front side, curtain and driver's knee airbags
- Front seatbelts feature pretensioners and load limiters
- Automatic Emergency Locking Retractors on all rear seatbelts
- Height adjustable headrests throughout the cabin
- Rear view reverse camera

**→ READ ABOUT SUBARU SAFETY TECHNOLOGIES AT [SUBARU.COM.AU](http://SUBARU.COM.AU)**

\*Australasian New Car Assessment Program.





SUBARU OUTBACK

08JUL09  
B09025



ANCAP

Crash testing for safety

Crashlab  
THE SAFE DECISION



# EYE SPY

YOU CATCH A FLEETING VISION IN  
YOUR MIND'S EYE. IS IT INTUITION?  
A PREMONITION?  
OR IS IT SUBARU EYESIGHT™ –  
DRIVER ASSIST TECHNOLOGY  
DESIGNED TO ACT LIKE A SECOND  
PAIR OF EYES.



## EYESIGHT™ - DRIVER ASSISTANCE VISION

AVAILABLE ON OUTBACK 2.5i PREMIUM AND OUTBACK 3.6R PREMIUM ONLY.



Subaru's renowned technologies include a 'driver assist system' called EyeSight™. EyeSight™ is a second pair of eyes that monitors the road ahead and recognises potentially dangerous driving situations. Using three-dimensional images captured by cameras mounted at the top of the front windscreen, EyeSight™ provides audible and visual warnings to prompt the driver to take action. Apart from these built-in driver alert functions, EyeSight™ will also apply automatic braking intervention, when necessary, to help avoid or reduce the severity of a detected frontal collision.

EyeSight™ driver assist features include:

- **PRE-COLLISION BRAKING** provides automatic braking to help avoid or reduce the severity of detected frontal accident impacts. Should the driver be distracted, or just not register the risk of a collision, braking will be automatically applied when a potential frontal collision is recognised by EyeSight™.
- **PRE-COLLISION BRAKE ASSIST** recognises a potential frontal impact, alerts the driver and assists the driver by applying full braking force in a detected emergency-braking situation.
- **PRE-COLLISION THROTTLE MANAGEMENT** reduces available acceleration in situations where the system detects objects in front of the vehicle which the vehicle is likely to impact. The engine output is restricted to reduce the possible impact force and frontal impact damage, and to help minimise injury should the driver mistakenly accelerate when an object directly in front of the car is recognised by EyeSight™.
- **ADAPTIVE CRUISE CONTROL** maintains the speed set by the driver, but also regulates the vehicle's speed in order to maintain a set distance from the car in front. The driver can select from three different distances, based on time and speed, and then the EyeSight™ system will automatically use braking and monitoring technologies to regulate the vehicle's speed in line with the traffic flow.
- **LANE SWAY AND DEPARTURE WARNING** monitors the vehicle's position within the road lane markings and sounds a warning to the driver when it recognises the potential for the vehicle to unintentionally move out of its lane, or when swaying within the lane, is recognised by EyeSight™.
- **LEAD VEHICLE START ALERT** prompts the driver that the vehicle in front is moving away, after being stopped. This effectively alerts the driver, if their vehicle does not start moving, that the traffic ahead is moving again.

EyeSight™ works with Subaru's acclaimed collision avoidance and collision protection technologies, working together to provide improved protection for you and your family.

While EyeSight™ can assist drivers in avoiding or reducing the severity of a detected frontal collision, there is naturally no substitute for driver vigilance, awareness and responsibility. EyeSight™ will see and recognise most objects within its field of vision, however its accuracy may be affected by external conditions and it should not be relied on to detect every potential road traffic hazard.

**TO SEE HOW EYESIGHT™ WORKS, VISIT [SUBARU.COM.AU](http://SUBARU.COM.AU) TO WATCH THE VIDEO DEMONSTRATIONS. OR FOR ALL OF THE FINE DETAIL, PLEASE REFER TO THE OWNER'S MANUAL.**

# OUR SERVICE PROMISE

**WE ARE ALL BORN FREE BUT STAYING FREE,  
THAT'S THE HARD PART.**

**ONCE YOU GET USED TO GOING ANYWHERE  
- AND DOING ANYTHING -  
YOU CAN NEVER GO BACK.**

**THAT FREEDOM IS SOMETHING YOU NEED TO HOLD  
ON TO. SOMETHING TO GRAB WITH BOTH HANDS.**

**REMEMBER - YOU STILL HAVE CORNERS,  
COUNTRIES, AND CONTINENTS TO CONQUER.**

**WE ARE YOUR GUARDIANS OF FREEDOM.  
THIS IS YOUR PRIDE AND JOY.**

**LOVE IT, LOOK AFTER IT AND IT'LL  
LOOK AFTER YOU IN RETURN.**

**IT TOOK THE FINEST MINDS IN JAPAN  
TO BUILD THIS INCREDIBLE VEHICLE.**

**WHY LET JUST ANYONE TINKER WITH IT?  
ENTRUST IT ONLY TO THOSE YOU TRUST MOST.**

**YOU CAN'T PUT A PRICE ON FREEDOM.  
BUT CONFIDENCE IS SURPRISINGLY AFFORDABLE.**

# WE WILL PROTECT YOUR FREEDOM.

TAKE TO THE ROAD WITH THE KNOWLEDGE THAT YOU HAVE THE EXPERIENCE AND SUPPORT OF SUBARU BEHIND YOU.

## SUBARU GENUINE SERVICE

Entrust your Subaru only to those who know it best. They are the Subaru technicians who are passionate about maintaining your freedom and who train year after year until they know your vehicle inside out. Using specialist diagnostic equipment and Subaru Genuine Parts, they are committed to keeping your Subaru **performing** at its best. Delivering freedom from worry, while ensuring the **safety** of your family and the long-term **retained value** of your vehicle.

## SUBARU NEW CAR WARRANTY - THREE YEARS / UNLIMITED KILOMETRES

Whether you're off the beaten track or cruising the open highway, you can rest assured knowing that your new Subaru is covered by a three year unlimited kilometre manufacturer's national warranty. That's three full years of worry free driving! For full details and our latest new car warranty information, visit [subaru.com.au/service/warranty](http://subaru.com.au/service/warranty)

But why stop there, when you're sure to have your Subaru for much longer? Protect your investment by purchasing an additional two year Subaru Assured New Vehicle Warranty. Ask your Subaru Retailer for more information.

## DATADOT<sup>TDs</sup><sup>®</sup>

Every Subaru is fitted with advanced engine immobilisers and the DataDot Theft Deterrent System - DATADOT<sup>TDs</sup><sup>®</sup>. Approximately 7,000 microscopic dots are laser-etched with your vehicle's unique Vehicle Identification Number (VIN) - making your Subaru a much less attractive target for potential thieves. DATADOT<sup>TDs</sup><sup>®</sup> is a theft deterrent not a theft prevention mechanism. Through publicity, word of mouth and stickers on the vehicle, thieves are discouraged from stealing Subaru vehicles due to the higher chance of successful prosecution when the vehicle or part is found.

## SUBARU ASSURED USED VEHICLES

Owning a Subaru that has already traversed highways and byways is like travelling with an old friend. Every Subaru Assured Used Vehicle has passed a 116-point quality inspection and comes with a one year unlimited kilometre Subaru Assured Warranty - to complement the balance of a new vehicle warranty or the statutory warranty that remains - from participating Subaru Assured Retailers.

## SUBARU FINANCE

Relax with Subaru Finance and enjoy your freedom faster with our range of personalised and affordable financial solutions to approved customers. Our finance specialists will help you find a finance package that is tailored to your individual needs - quickly and conveniently. So let Subaru Finance do the work for you, it's what we do best.

## SUBARU INSURANCE

Freedom is limitless. So why keep your car in the garage. Explore your freedom, but also protect it. There is a range of Subaru Insurance options that offer features and benefits to complement your Subaru, including:

- Subaru Comprehensive Motor Vehicle Insurance
- Subaru Motor Equity Insurance
- Subaru Loan Protection Insurance

## SUBARU LIFESTYLE

You wear your freedom like a badge of honour and now you can embrace all things Subaru with our range of quality merchandise. To see the entire Subaru merchandise range, visit [shop.subaru.com.au](http://shop.subaru.com.au), or ask your local authorised Subaru Retailer.

## MY SUBARU - YOUR SUBARU COMMUNITY

Buying a new Subaru is more than gaining a shiny new vehicle, it's joining a club - one that comes with a range of perks. My Subaru is an owner's program that gives you access to a number of benefits:

### → My Subaru - Online Owner's Destination

My Subaru is an online destination for owners which provides access to exclusive benefits, tailored content and much more. Here you can also update your contact information and see your vehicle ownership history.

### → Subaru Roadside Assistance

A peace-of-mind, Australia-wide Roadside Assistance program run in partnership with your local state Motoring Club. As a new Subaru owner, you receive complimentary 12-months standard roadside assistance as well as all the extras that come with Motoring Club membership like member magazines and Show Your Card and Save discounts.

For more information visit

[subaru.com.au/owner-experience/benefits/roadside](http://subaru.com.au/owner-experience/benefits/roadside).

→ DATADOT<sup>TDs</sup><sup>®</sup> Three Year Rebate on Theft Insurance Excess DataDot Technology (Australia) Pty Ltd will pay your theft insurance excess (up to a maximum of \$800 including GST) should your new Subaru be stolen and not recovered within 45 days despite the presence of DATADOT<sup>TDs</sup><sup>®</sup> and warning labels<sup>1</sup>. This benefit is available during the first three years of your new vehicle purchase. For full terms and conditions visit [subaru.com.au/subaru-dna/retained-value](http://subaru.com.au/subaru-dna/retained-value).

1. Vehicle must be comprehensively insured. Terms and conditions apply.

### → Subaru Preferred Collision Repairer Network

When you take the road less travelled, you're going to get wet and you're going to get dirty. But should you put a dent in your freedom, there is a dedicated Subaru Preferred Collision Repairer helpline available on 1800 737 179, 24-hours a day, seven days a week.

Plus the national network of appointed Subaru Preferred Collision Repairers can return your Subaru to its former glory.

### → Subaru Genuine Merchandise

You will enjoy a 10 per cent discount and free shipping for purchases over \$100 when purchasing merchandise from our online store: [shop.subaru.com.au](http://shop.subaru.com.au). Upon delivery of your new Subaru, visit My Subaru and locate the redemption code.

### → Subaru Genuine Accessories

You will enjoy a 10 per cent discount on the fitted recommended retail price for Subaru Genuine Accessories when purchased via the Subaru retail network. Upon delivery of your new Subaru, visit My Subaru and locate the redemption code.

BEING A SUBARU OWNER COMES WITH MANY GREAT BENEFITS. VISIT [SUBARU.COM.AU](http://SUBARU.COM.AU) TO SEE THE BENEFITS AVAILABLE TO YOU.



## OUTBACK AWARDS

- 2009
- Australia's Best Cars, Best Recreational 4WD, Subaru Outback 2.5i
  - Fairfax Drive Car of the Year 2009, Best SUV under \$40,000, Subaru Outback
  - Australasian New Car Assessment Program (ANCAP)  
five-star occupant safety rating for the entire Outback range

[subaru.com.au](http://subaru.com.au)

Subaru (Aust) Pty Limited ABN 95 000 312 792 (Subaru Australia)  
Level 3, 4 Burbank Place, Baulkham Hills NSW 2153. Toll Free: 1800 226 643  
Subaru Australia reserves the right to vary vehicle specifications and standard features in Australia from those detailed in this brochure.  
Vehicles shown in this brochure may be fitted with accessories available at additional cost.  
No part of the brochure can be reproduced without written permission from Subaru Australia. Printed in Australia.  
© Copyright 2013-2014 - Subaru (Aust) Pty Limited. All rights reserved.

ALL 4 THE DRIVER™





# OUTBACK

SPECIFICATIONS & ACCESSORIES  
MODEL YEAR 2014



ALL 4 THE DRIVER™



**SUBARU**

# KEY FEATURES

## OUTBACK 2.5i



### PERFORMANCE

- Symmetrical All-Wheel Drive
- Engine: 2.5-litre horizontally-opposed Boxer engine
- Transmission: Lineartronic™ CVT with manual mode
- Maximum power output: 127kW@5600rpm
- Maximum torque: 235Nm@4100rpm

### EXTERIOR

- Front fog lights
- Rear spoiler
- Roof rails with integrated cross bars
- 213mm ground clearance
- 17" alloy wheels

### INTERIOR

- Air-conditioning - dual zone climate control
- Blue interior illumination
- Leather steering wheel
- Seat trim - (choice of black or ivory cloth)
- Steering wheel audio, cruise and *Bluetooth*<sup>®1</sup> controls

### ENTERTAINMENT / TECHNOLOGY

- Single in-dash CD player featuring:
  - AM/FM radio
  - 6 speakers
  - MP3/WMA/iPod compatible
  - 4.3" LCD<sup>2</sup> display screen

- *Bluetooth*<sup>®1</sup> wireless technology with:
  - Handsfree mobile communication
  - Audio streaming<sup>3</sup>
  - Voice command recognition
- One touch lane change indicator
- Auxiliary jack and USB connection
- Rear view reverse camera

### OPTION PACK

- Air-conditioning - dual zone climate control with rear air vents
- Electric lumbar support - driver
- Electroluminescent gauges with colour MID<sup>4</sup>
- Seat trim leather<sup>5</sup> (choice of black or ivory - perforated seat inserts)
- Multi-information in-dash satellite navigation system
- Steering wheel MID<sup>4</sup> controls
- 8-way power seat with dual memory - driver

## OUTBACK 2.5i PREMIUM



### PERFORMANCE

- Symmetrical All-Wheel Drive
- Engine: 2.5-litre horizontally-opposed Boxer engine
- Transmission: Lineartronic™ CVT with manual mode
- Maximum power output: 127kW@5600rpm
- Maximum torque: 235Nm@4100rpm

### EXTERIOR

- Dusk sensing headlights
- Electric sunroof
- Front fog lights
- Rear spoiler
- Roof rails with integrated cross bars

- 213mm ground clearance
- 17" alloy wheels

### INTERIOR

- Air-conditioning - dual zone climate control with rear vents
- Blue interior illumination
- Leather steering wheel
- Rain sensing front windscreen wipers
- Seat trim leather<sup>5</sup> (choice of black or ivory - perforated seat inserts)
- Steering wheel audio, cruise, *Bluetooth*<sup>®1</sup>, EyeSight™ and MID<sup>4</sup> controls
- 8-way power seat with dual memory - driver

### ENTERTAINMENT / TECHNOLOGY

- Multi-information in-dash satellite navigation system featuring:
  - AM/FM radio
  - MP3/WMA/iPod/DIVX compatibility
  - Single CD player
  - 6 speakers
  - 7" touch screen
- *Bluetooth*<sup>®1</sup> wireless technology with:
  - Handsfree mobile communication
  - Audio streaming<sup>3</sup>
  - Voice command recognition
- Electroluminescent gauges with colour MID<sup>4</sup>
- One touch lane change indicator
- Auxiliary jack and USB connection
- Rear view reverse camera
- EyeSight™ technology

# OUTBACK 2.0D

## PERFORMANCE

- Symmetrical All-Wheel Drive
- Engine: 2.0-litre turbocharged horizontally-opposed Boxer diesel engine
- Transmission: 6-speed manual or Lineartronic™ CVT with manual mode
- Maximum power output: 110kW@3600rpm
- Maximum torque: 350Nm@1600-2400rpm (MT) 350Nm@1800-2400rpm (CVT)

## EXTERIOR

- Bonnet scoop
- Front fog lights
- Rear spoiler
- Roof rails with integrated cross bars
- 213mm ground clearance
- 17" alloy wheels

## INTERIOR

- Air-conditioning - dual zone climate control
- Blue interior illumination
- Leather steering wheel
- Seat trim - (choice of black or ivory cloth)
- Steering wheel audio, cruise and Bluetooth®¹ controls

## ENTERTAINMENT / TECHNOLOGY

- Multi-information in-dash satellite navigation system featuring:
  - AM/FM radio

- MP3/WMA/iPod/DIVX compatible
  - 6 speakers
  - Single CD player
  - 7" touch screen
- Bluetooth®¹ wireless technology with:
  - Handsfree mobile communication
  - Audio streaming²
  - Voice command recognition
- One touch lane change indicator
- Auxiliary jack and USB connection
- Rear view reverse camera



# OUTBACK 2.0D PREMIUM

## PERFORMANCE

- Symmetrical All-Wheel Drive
- Engine: 2.0-litre turbocharged horizontally-opposed Boxer diesel engine
- Transmission: 6-speed manual or Lineartronic™ CVT with manual mode
- Maximum power output: 110kW@3600rpm
- Maximum torque: 350Nm@1600-2400rpm (MT) 350Nm@1800-2400rpm (CVT)

## EXTERIOR

- Bonnet scoop
- Electric sunroof
- Front fog lights
- Rear spoiler
- Roof rails with integrated cross bars
- 213mm ground clearance
- 17" alloy wheels

## INTERIOR

- Air-conditioning - dual zone climate control

- Blue interior illumination
- Leather steering wheel
- Seat trim leather³ (choice of black or ivory) - perforated seat inserts
- Steering wheel audio, cruise, Bluetooth®¹, and MID⁴ controls
- 8-way power seat with dual memory - driver

## ENTERTAINMENT / TECHNOLOGY

- Multi-information in-dash satellite navigation system featuring:
  - AM/FM radio

- MP3/WMA/iPod/DIVX compatibility
- Single CD player
- 6 speakers
- 7" touch screen
- Bluetooth®¹ wireless technology with:
  - Handsfree mobile communication
  - Audio streaming²
  - Voice command recognition
- Electroluminescent gauges with colour MID⁴
- One touch lane change indicator
- Auxiliary jack and USB connection
- Rear view reverse camera



# OUTBACK 3.6R PREMIUM

## PERFORMANCE

- Symmetrical All-Wheel Drive
- Engine: 3.6-litre horizontally-opposed Boxer engine
- Transmission: 5-speed automatic with manual mode
- Maximum power output: 191kW@5600rpm
- Maximum torque: 350Nm@4400rpm
- Subaru Intelligent Drive (SI-DRIVE)

## EXTERIOR

- Dusk sensing headlights
- Electric sunroof
- Front fog lights
- Rear spoiler
- Roof rails with integrated cross bars
- Self-levelling low beam Xenon headlights
- 213mm ground clearance
- 17" alloy wheels

## INTERIOR

- Air-conditioning - dual zone climate control with rear vents
- Blue interior illumination
- Leather steering wheel

- Rain sensing front windscreen wipers
- Seat trim leather³ (choice of black or ivory) - perforated seat inserts
- Smart key with push start ignition
- Steering wheel audio, cruise, Bluetooth®¹, EyeSight™ SI-DRIVE and MID⁴ controls
- 8-way power seat - driver and front passenger - driver with dual memory

## ENTERTAINMENT / TECHNOLOGY

- McIntosh entertainment system featuring:
  - Built-in multi-information in-dash satellite navigation system
  - AM/FM radio

- MP3/WMA/iPod compatible
- 10 speakers
- Single CD/DVD⁵ player
- 8" touch screen
- Bluetooth®¹ wireless technology with:
  - Handsfree mobile communication
  - Audio streaming²
  - Voice command recognition
- Electroluminescent gauges with colour MID⁴
- One touch lane change indicator
- Auxiliary jack and USB connection
- Rear view reverse camera
- EyeSight™ technology



1. Bluetooth® is a registered trademark of Bluetooth SIG Inc. System operation ability is subject to the Bluetooth® wireless technology specification of individual's phone. 2. There may be restrictions on features available for certain models that are not fully compliant with AVCRP. 3. Some parts of the seating are not full natural leather. 4. Colour Multi-Information Display (MID) includes Eco gauge, driving time, gear select indicator, cruise control set speed, odometer, trip computer. Models with EyeSight™ will also feature EyeSight™ displays. 5. Satellite Navigation DVD only operates when vehicle is stationary.

# TECHNICAL SPECIFICATIONS<sup>1</sup> - OUTBACK RANGE

MODEL		2.5i	2.5i Premium	3.6R Premium	2.0 Diesel	2.0 Diesel Premium
<b>TRANSMISSION</b>						
6-speed manual transmission					•	•
Lineartronic™ CVT with manual mode		•	•		•	•
5-speed automatic transmission with manual mode				•		
<b>ENGINE</b>						
Engine type		Horizontally-opposed Boxer 4-cylinder, petrol engine		Horizontally-opposed Boxer 6-cylinder, petrol engine	Turbocharged horizontally-opposed Boxer 4-cylinder, diesel engine	
Valve mechanism		DOHC with AVCS		DOHC with Dual AVCS	DOHC	
Bore x stroke	mm	94.0 x 90.0		92 x 91	86 x 86	
Capacity	cc	2498		3630	1998	
Compression ratio		10:1		10.5:1	16.0:1 (MT) / 16.3:1 (CVT)	
Fuel tank capacity	litres			65		
Fuel system		Multi point sequential injection			Common rail direct injection	
Fuel requirement	RON	90-95			Diesel	
<b>PERFORMANCE<sup>2</sup></b>						
Maximum power output (DIN)	kW/rpm	127kW@5600rpm		191kW@5600rpm	110kW@3600rpm	
Maximum torque (DIN)	Nm/rpm	235Nm@4100rpm		350Nm@4400rpm	350Nm@1600-2400rpm (MT) 350Nm@1800-2400rpm (CVT)	
Acceleration <sup>3</sup> 0 - 100 km/h	seconds	10.2		7.6	9.7	
Electronic Throttle Control system (ETC)		Drive-by-wire				
Fuel consumption (ADR81/02) <sup>4</sup> combined	l/100km	8.0		10.3	6.0 (MT) / 6.5 (CVT)	
	urban	10.7		14.7	7.3 (MT) / 7.8 (CVT)	
	extra urban	6.5		7.6	5.3 (MT) / 5.8 (CVT)	
CO <sub>2</sub> emissions (ADR81/02) combined	(g/km)	185		242	158 (MT) / 172 (CVT)	
Emission standards		EURO5		EURO4	EURO5	
<b>SYMMETRICAL ALL-WHEEL DRIVE</b>						
Type	Manual	n/a		n/a	Centre Differential with a Viscous Limited Slip Differential	
Type	Auto	Active Torque Split		Variable Torque Distribution	n/a	
<b>TRANSMISSION</b>						
Gear ratio	1st	3.581		3.540	3.454 (MT) / 3.505 (CVT)	
	2nd	Continuously variable		2.264	1.75 (MT) / 2.305 (CVT)	
	3rd	Continuously variable		1.471	1.062 (MT) / 1.567 (CVT)	
	4th	Continuously variable		1.000	0.785 (MT) / 1.179 (CVT)	
	5th	Continuously variable		0.834	0.634 (MT) / 0.910 (CVT)	
	6th	0.618		n/a	0.557 (MT) / 0.723 (CVT)	
	7th	n/a		n/a	0.582 (CVT)	
Gear ratio - reverse		3.667		2.370	3.636 (MT) / 2.345 (CVT)	
Final reduction gear ratio		3.9		3.083	4.444 (MT) / 4.111 (CVT)	
<b>STEERING</b>						
Steering		Engine speed sensitive power assisted rack and pinion			Electric power steering	
Minimum turning circle (kerb to kerb)	m	11				
<b>SUSPENSION</b>						
Type	Front	McPherson strut type, independent suspension				
	Rear	Self-levelling double wishbone type, independent suspension				
<b>BRAKES</b>						
Type	Front	Ventilated disc brake				
	Rear	Solid disc brake		Ventilated disc brake	Solid disc brake (MT) Ventilated disc brake (CVT)	
Brake booster type		Tandem				
ABS		4-channel, 4-sensor ABS with Electronic Brakeforce Distribution				
<b>WHEELS AND TYRES</b>						
Tyre manufacturer		Yokohama				
Tyres (width, profile, size, load index & speed rating)		225/60 R17 99V				
Rim size		17x7J				
Wheels		17"				
Spare wheel		17"				
<b>MEASUREMENT</b>						
Overall length	mm	4790				
Overall width	mm	1820				
Overall height	mm	1665				
Wheel base	mm	2745				
Front track	mm	1535				
Rear track	mm	1530				
Minimum ground clearance <sup>5</sup>	mm	213				
Cargo volume - rear seat up/down	litres	490 / 1690				
Tare mass <sup>6</sup>	kg	1512	1533	1602	1553 (MT) / 1606 (CVT)	1573 (MT) / 1626 (CVT)
Seating capacity		5				
<b>TOWING</b>						
With trailer brakes	kg	1500		1800	1700	
Without trailer brakes	kg	750				
Maximum tow ball down load	kg	150		180	170	

1. Subaru Australia reserves the right to change mechanical specification and equipment levels without notice. 2. All performance data measured using 95RON as required by Australian Design Rule 81/02. Vehicles tested in accordance with ADR 81/02. 3. Acceleration test performed under controlled conditions. 4. Fuel consumption figures calculated in accordance with Australian Design Rule 81/02. 5. Ground clearance at kerb weight. 6. Vehicle kerb weight and tare mass varies according to the types of optional equipment included.

# MODEL FEATURE SPECIFICATIONS<sup>1</sup> - OUTBACK RANGE

MODEL	2.5i	2.5i Premium	3.6R Premium	2.0 Diesel	2.0 Diesel Premium
<b>TRANSMISSION</b>					
6-speed manual transmission				•	•
Lineartronic™ CVT with manual mode	•	•		•	•
5-speed automatic transmission with manual mode			•		
<b>SAFETY RATING</b>					
ANCAP <sup>2</sup> occupant safety rating (maximum 5)	5-star	5-star	5-star	5-star	5-star
<b>COLLISION AVOIDANCE</b>					
Symmetrical All-Wheel Drive (SAWD)	•	•	•	•	•
Vehicle Dynamics Control system (VDC) featuring:	•	•	•	•	•
Electronic Stability Control (ESC)	•	•	•	•	•
Anti-lock Braking System (ABS)	•	•	•	•	•
Electronic Brakeforce Distribution (EBD)	•	•	•	•	•
Brake Assist	•	•	•	•	•
Traction Control System (TCS)	•	•	•	•	•
TCS Limited Slip Device	•	•	•	•	•
4-wheel disc brakes	•	•	•	•	•
Electronic parking brake	•	•	•	•	•
Hill hold switch	•	•	•	•	•
Rear view reverse camera	•	•	•	•	•
<b>COLLISION PROTECTION</b>					
SRS <sup>3</sup> airbags - dual front, dual front side and curtain	•	•	•	•	•
SRS <sup>3</sup> airbags - knee airbag (driver)	•	•	•	•	•
Front seat belts with pretensioners and load limiters	•	•	•	•	•
3 point A/ELR rear seat belts	•	•	•	•	•
Height adjustable seat belt anchors - driver and front passenger	•	•	•	•	•
Seat belt warning lights - all seats	•	•	•	•	•
Whiplash reduction seats	•	•	•	•	•
Rear seat headrests for 3 seating positions	•	•	•	•	•
Height adjustable front seat headrests	•	•	•	•	•
Height adjustable rear seat headrests	•	•	•	•	•
Safety pedals - brake / footrest	•	•	•	CVT	CVT
Safety pedals - brake / clutch / footrest				Manual	Manual
Ring-shaped passenger safety cell	•	•	•	•	•
<b>CHILD SAFETY</b>					
Child seat anchor points (x3)	•	•	•	•	•
Rear door child locks	•	•	•	•	•
<b>INTELLIGENT DRIVING DYNAMICS</b>					
Subaru Intelligent Drive (SI-DRIVE)			•		
EyeSight™ featuring:		•	•		
Adaptive cruise control		•	•		
Lane departure warning		•	•		
Lane sway warning		•	•		
Lead vehicle start alert		•	•		
Pre-collision braking system		•	•		
Pre-collision brake assist		•	•		
Pre-collision throttle management		•	•		
Electronic Throttle Control system (ETC)	•	•	•	•	•
Self-levelling rear suspension	•	•	•	•	•
<b>EXTERIOR</b>					
Body coloured mirrors and door handles	•	•	•	•	•
Bonnet scoop				•	•
Bonnet with gas struts	•	•	•	•	•
Chrome type window sills	•	•	•	•	•
Detachable module type windscreen wipers	•	•	•	•	•
Door mirrors with indicators	•	•	•	•	•
Dual tail pipe			•		
Electric sunroof		•	•		•
Engine cover			•		•
Exterior grade badge				•	•
Full size spare wheel	•	•	•	•	•
Rear door, rear quarter and rear windscreen glass	Privacy Glass	Privacy Glass	Privacy Glass	Privacy Glass	Privacy Glass
Rear spoiler	•	•	•	•	•
Rear window wiper	•	•	•	•	•
Roof rails with integrated cross bars	•	•	•	•	•
Side cladding	•	•	•	•	•
17" alloy wheels	•	•	•	•	•
<b>LIGHTING - EXTERIOR</b>					
Front fog lights	•	•	•	•	•
Headlights - halogen with auto off	•	•		•	•
Headlights - dusk sensing		•	•		
Headlights - self-levelling Xenon low beam with auto off			•		
Rear bumper reflector(s)	•	•	•	•	•
Rear LED stoplight	•	•	•	•	•

# MODEL FEATURE SPECIFICATIONS<sup>1</sup> - OUTBACK RANGE

MODEL	2.5i	2.5i Premium	3.6R Premium	2.0 Diesel	2.0 Diesel Premium
<b>LIGHTING - INTERIOR</b>					
Blue interior illumination	•	•	•	•	•
Cabin and cargo area lights	•	•	•	•	•
Illuminated ignition ring	•	•	•	•	•
Map lights (x2)	•	•	•	•	•
<b>AIR-CONDITIONING</b>					
Air-conditioning - dual zone climate control	•	•	•	•	•
Air-conditioning - dual zone climate control with rear vents	Option pack	•	•	•	•
Anti-dust filter	•	•	•	•	•
Front and side demisters	•	•	•	•	•
Heater ducts for rear passengers	•	•	•	•	•
Rear windscreen demister (electric with timer)	•	•	•	•	•
<b>SECURITY</b>					
DATADOT TDS® security system	•	•	•	•	•
Immobiliser security system	•	•	•	•	•
Vehicle pre-wired for alarm system installation	•	•	•	•	•
<b>INSTRUMENTATION AND CONTROLS</b>					
Adjustable steering wheel - height and telescopic	•	•	•	•	•
Electroluminescent gauges with colour MID <sup>4</sup>	Option pack	•	•	•	•
Manual mode (automatic transmission and CVT)	•	•	•	CVT	CVT
Multi-information display (fuel economy, temperature and clock)	•	•	•	•	•
One touch lane change indicator	•	•	•	•	•
Paddle gear shift on steering column	•	•	•	CVT	CVT
Steering wheel audio controls	•	•	•	•	•
Steering wheel cruise controls	•	•	•	•	•
Steering wheel Bluetooth® controls	•	•	•	•	•
Steering wheel EyeSight™ controls	•	•	•	•	•
Steering wheel MID <sup>4</sup> controls	Option pack	•	•	•	•
Steering wheel SI-DRIVE controls	•	•	•	•	•
Twin trip meter (switchable)	•	•	•	•	•
<b>STORAGE</b>					
Cargo luggage hooks	•	•	•	•	•
Centre console box	•	•	•	•	•
Cupholders - centre console	With lid	With lid	With lid	With lid	With lid
Cupholders - rear	•	•	•	•	•
Door pockets with integrated bottle holder - front and rear	•	•	•	•	•
Front centre tray	•	•	•	•	•
In-dash console box	•	•	•	•	•
Overhead console - sunglasses holder	•	•	•	•	•
Pull-out cargo area tie down points	•	•	•	•	•
Retractable cargo security blind	•	•	•	•	•
Seat back nets - driver and front passenger	•	•	•	•	•
Tool kit	•	•	•	•	•
<b>CONVENIENCE</b>					
12v/120W power jacks (x2)	•	•	•	•	•
Boot/tailgate auto unlock on remote central locking keys	•	•	•	•	•
Illuminated sunvisor with vanity mirrors - driver and front passenger	•	With visor extension	With visor extension	•	•
Interior fuel lid lock release	•	•	•	•	•
Intermittent variable speed front windscreen wipers	•	•	•	•	•
Rain sensing front windscreen wipers	•	•	•	•	•
Power mirrors and windows	•	•	•	•	•
Power steering	•	•	•	•	•
Rear seat centre armrest	•	•	•	•	•
Remote central locking	•	•	•	•	•
Remote central locking keys (x2)	•	•	•	•	•
Smart key and push-start ignition	•	•	•	•	•
<b>INTERIOR TRIMS</b>					
Cargo area carpet colour	Black	Black	Black	Black	Black
Carpet trim - black	•	•	•	•	•
Chrome side step plate	•	•	•	•	•
Gear shift	Matt Silver	Matt Silver	Matt Silver	Leather (MT) Matt Silver (CVT)	Leather (MT) Matt Silver (CVT)
Leather steering wheel	•	•	•	•	•
Seat trim - cloth	•	•	•	•	•
Seat trim - leather <sup>6</sup> - perforated seat inserts	Option pack	•	•	•	•
Seat trim colour - black	•	•	•	•	•
Seat trim colour - ivory	•	•	•	•	•
<b>SEATING EXTRAS</b>					
60/40 split folding rear seats	•	•	•	•	•
8-way power seat - front passenger	•	•	•	•	•
8-way power seat with dual memory - driver	Option pack	•	•	•	•
Electric lumbar support - driver	Option pack	•	•	•	•
Manual seat height lifter - driver	•	•	•	•	•
One touch lever folding rear seats	•	•	•	•	•
Reclining rear seat	•	•	•	•	•

MODEL	2.5i	2.5i Premium	3.6R Premium	2.0 Diesel	2.0 Diesel Premium
<b>ENTERTAINMENT</b>					
Single in-dash CD player featuring:					
AM/FM radio	•				
6 speakers	•				
MP3/WMA/iPod compatible	•				
4.3" LCD <sup>7</sup> display screen	•				
Multi-information in-dash satellite navigation system featuring:	Option pack	•		•	•
AM/FM radio	Option pack	•		•	•
MP3/WMA/iPod/DIVX compatible	Option pack	•		•	•
Single CD player	Option pack	•		•	•
6 speakers	Option pack	•		•	•
7" touch screen	Option pack	•		•	•
McIntosh entertainment system featuring:			•		
Built in multi-information in-dash satellite navigation system			•		
AM/FM radio			•		
MP3/WMA/iPod compatible			•		
Single CD/DVD <sup>8</sup> player			•		
10 speakers			•		
8" touch screen			•		
Bluetooth <sup>®</sup> wireless technology with:	•	•	•	•	•
Handsfree mobile communication	•	•	•	•	•
Handsfree SMS <sup>9</sup> read functionality	Option pack	•		•	•
Audio streaming <sup>10</sup>	•	•	•	•	•
Voice command recognition	•	•	•	•	•
Auxiliary jack - front centre console	•	•	•	•	•
USB connection - front centre console	•	•	•	•	•
<b>WARRANTY</b>					
3 year/unlimited km warranty	•	•	•	•	•
12 Month Roadside Assistance Program <sup>11</sup>	•	•	•	•	•

Note: Full Outback body kit is available on all models and includes the following model specifications: Side cladding, wheel arch guards, front and rear bumper lower covers, front mud flaps.

1. Subaru Australia reserves the right to change mechanical specification and equipment levels without notice. 2. The Australasian New Car Assessment Program (ANCAP) gives consumers consistent information on the level of occupant protection provided by vehicles in serious front and side crashes. 3. SRS: Supplemental Restraint System. Effective when used in conjunction with seat belts. 4. Colour Multi-Information Display (MID) includes Eco gauge, driving time, gear select indicator, cruise control set speed, odometer and trip computer. Models with EyeSight™ will also feature EyeSight™ displays. 5. Bluetooth<sup>®</sup> is a registered trademark of Bluetooth SIG Inc. System operation ability is subject to the Bluetooth<sup>®</sup> wireless technology specification of individual's phone. 6. Some parts of the seating are not full natural leather. 7. Information display and operation ability is subject to compatibility of the Bluetooth<sup>®</sup> audio device to AVCRP and some functions may be restricted. 8. Satellite Navigation DVD only operates when vehicle is stationary. 9. MAP (message access profile) required for Hands Free SMS read functionality. Not all mobile phones have MAP. Please refer to specifications of your mobile phone to see if it has MAP. Hands free SMS read functionality is only available when factory satellite navigation is fitted. 10. There may be restrictions on features available for certain models that are not fully compliant with AVCRP. 11. 12 Month Roadside Assistance Program is standard upon activation with relevant Motoring Club in each state. To receive this benefit the customer must opt into the 12 Month Roadside Assistance program at time of vehicle delivery. Eligible customers are those retail and novated lease customers who purchase a new Subaru on or after 1st June 2013 and have less than 5 vehicles under the Club Membership offer. Customers must provide a valid phone and residential address, as well as date of birth. Fleet, Government and Rental companies are excluded.

# INTERIOR

## TRIM COLOUR



**BLACK:**  
Cloth: Outback 2.5i and Outback 2.0D  
Leather<sup>1</sup>: Outback 2.5i Option Pack, Outback 2.5i Premium, Outback 3.6R Premium and Outback 2.0D Premium



**IVORY:**  
Cloth: Outback 2.5i and Outback 2.0D  
Leather<sup>1</sup>: Outback 2.5i Option Pack, Outback 2.5i Premium, Outback 3.6R Premium and Outback 2.0D Premium

1. Some parts of the seating are not full natural leather.

## ENTERTAINMENT



**SINGLE IN-DASH CD PLAYER:**  
Outback 2.5i



**MULTI-INFORMATION IN-DASH SATELLITE NAVIGATION SYSTEM:**  
Outback 2.5i Option Pack, Outback 2.5i Premium, Outback 2.0D and Outback 2.0D Premium



**McINTOSH ENTERTAINMENT SYSTEM:**  
Outback 3.6R Premium

## TRIM PANELS



**MATT SILVER:**  
Outback 2.5i, Outback 2.5i Premium, Outback 2.0D and Outback 2.0D Premium



**TITANIUM DRAPE:**  
Outback 3.6R Premium

# ACCESSORIES

Freedom is in Subaru's DNA. But your DNA is unique. That's why we give you the freedom to exploit your individuality with Subaru Genuine Accessories. Factory approved by Subaru - for your Subaru - they can enhance your vehicle to meet your lifestyle. From the practical, to the purely aesthetic, the possibilities are endless. And naturally when you purchase Subaru Genuine Accessories, you are protected by our manufacturer's warranty.

For full warranty, pricing and applicability information visit us at [subaru.com.au](http://subaru.com.au)

## GENUINE ACCESSORIES, GENUINE WARRANTY

All Subaru Genuine Accessories come with a manufacturer's warranty:

- When you have them fitted at the time you purchase your new vehicle (or at your first scheduled service by your Subaru Retailer) you get a three-year/unlimited-kilometre warranty.
- When you purchase accessories and have them fitted by your Subaru Retailer any other time you get a two-year/unlimited-kilometre warranty.
- When you purchase accessories from your Subaru Retailer at any other time, you get a 12-month/unlimited kilometre warranty.

For full warranty, pricing and applicability information visit us at [subaru.com.au](http://subaru.com.au). Our goods come with guarantees that cannot be excluded under the Australian Consumer Law. You are entitled to a replacement or refund for a major failure and for compensation for any other reasonably foreseeable loss or damage. You are also entitled to have the goods repaired or replaced if the goods fail to be of acceptable quality and the failure does not amount to a major failure. Subaru Australia reserves the right to vary vehicle specifications, accessory range and standard features in Australia from those detailed in this brochure. Vehicles shown in this brochure may be fitted with accessories available at additional cost.

[SUBARU.COM.AU](http://SUBARU.COM.AU) FOR FULL DETAILS ON THE TAILOR-MADE ACCESSORIES AVAILABLE FOR YOUR SUBARU MODEL.



ROOF SPOILER



REAR WAIST SPOILER



WEATHERSHIELDS



REAR STEP PANEL (RESIN)



CARPET FLOOR MAT



RUBBER FLOOR MAT



HEADLAMP PROTECTOR



BONNET PROTECTOR



MUDFLAPS (FRONT)



REAR PARK ASSIST



AVN NAVIGATION SYSTEM



SECURITY ALARM



WHEEL LOCK NUTS



CARGO TRAY (LOW DISH)



CARGO TRAY (DEEP DISH)



TOWBAR KIT



CARGO POWER SOCKET



ASHTRAY



CIGARETTE LIGHTER



PUDDLE LAMPS



# ACCESSORIES



TOWBALL MOUNTED BIKE CARRIER  
(TWO BIKES)



TOWBALL MOUNTED BIKE CARRIER  
(THREE BIKES)



UNIVERSAL LOCKING ARMS



WATERCRAFT HOLDER



BICYCLE HOLDER (FORK MOUNTED)



BICYCLE HOLDER (UPRIGHT)



THULE MOTION 200 SILVER LUGGAGE POD



THULE MOTION 800 SILVER LUGGAGE POD



LUGGAGE RACK (SMALL)



LUGGAGE RACK (LARGE)



NET AND STRAPS FOR LUGGAGE RACK



SIDE STEP UP



THULE GO PACK SET



THULE GO BOX



CARGO NET (REAR)



CARGO NET (SIDE x2)



FIRST AID KIT



ADVENTURE PORTABLE FRIDGE  
(14 LITRE, 12V ONLY)

# COLOUR IS EVERYTHING

One of the final choices – but one of the most important! The colour you choose for your Outback makes a bold statement about who you are. So we've made sure you've got lots of ways to express yourself – with a wide range of colours to make your Outback more... you.

All colours available in all models.



SATIN WHITE PEARL



JASMINE GREEN METALLIC



BURNISHED BRONZE METALLIC



ICE SILVER METALLIC



VENETIAN RED PEARL



DARK GREY METALLIC



DEEP SEA BLUE PEARL



CRYSTAL BLACK SILICA

## FACTORY FITTED OPTION



### NOTE:

A factory fitted option is available on all models and excludes the following model specifications:

Side cladding, wheel arch guards, front and rear bumper lower covers, front mud flaps. For further information please contact your Subaru Retailer.