

ISUZU
TRUCKS
CELEBRATING
25
YEARS LEADERSHIP
1989-2013

We
share
the
load.

ISUZU
RELIABILITY IS EVERYTHING

GIGA SERIES

GVM: 24,000 – 26,000KG. GCM: 50,000 – 70,000KG



EFFECTIVE
MAR 2014



OUR BIGGEST TRUCK. YOUR EASIEST DAY.

ISUZU HAS BEEN THE LEADING TRUCK BRAND IN AUSTRALIA FOR 25 YEARS STRAIGHT*. A DOMINANT POSITION EARNED BY OFFERING YOU SAFETY, PERFORMANCE, DRIVEABILITY, COMFORT, OPERATING COSTS, PRODUCTIVITY AND, ABOVE ALL, OUR LEGENDARY RELIABILITY. THE GIGA SERIES, OUR BIGGEST TRUCKS, OFFERS YOU 12 DIFFERENT VARIANTS. INCLUDING SHORT, MEDIUM AND LONG MODELS, RIGHT UP TO OUR MIGHTY GIGAMAX FLAGSHIP, USUALLY SEEN HAULING B-DOUBLES. YOU ALSO HAVE CHOICES OF ENGINES, TRANSMISSIONS, WHEELBASES, AXLES, SUSPENSIONS, EVEN TYRES. ALL OF WHICH WILL HELP MAKE YOUR DAILY GRIND MUCH LESS OF A GRIND, WHATEVER YOUR APPLICATION. AND BY CONTINUING TO SHARE THE LOAD WITH YOU WE HOPE TO NEVER SHARE THE LEAD WITH ANYONE.

*According to T-Mark industry statistics.



338kW/455HP

WITH GCM RATINGS OF 57,000KG GVM, ISUZU AMT OR EATON 18-SPEED TRANSMISSIONS, MERITOR REAR AXLE SETS AND 6-ROD OR HENDRICKSON HAS AIRBAG SUSPENSION IN RIGID, RIGID & DOG AND HIGHWAY SPECIFICATIONS, ISUZU'S GIGA RANGE WILL IDEALLY MATCH AN ARRAY OF LOCAL AND INTRASTATE HAULAGE APPLICATIONS.

- ECE-R29 cab-strength and FUPS compliant.
- ABS standard across all models.
- Driver's SRS airbag and integrated seatbelt pre-tensioners.
- Michelin tubeless tyres / low energy type on Highway spec models.
- Three-seat, first-class cab.
- ISRI 6860 air-suspension driver's seat.
- Integrated, automatic air-conditioning.
- DAVE infotainment system, with digital radio, DVD, MP3, voice-control and Bluetooth.



GIGAMAX

382kW/510HP

WITH 510HP AND A GCM RATING OF 70,000GVM THE GIGAMAX IS IDEAL FOR INTRASTATE APPLICATIONS AND INTER-CAPITAL INTERSTATE LINE HAULAGE. STANDARD 4.10RA RATIO AND OPTIONAL HIGHWAY SPECIFICATION WHICH INCLUDES 3.42RA RATIO PLUS MICHELIN ZXA/XJE LOW-ENERGY TYRES.

- ECE-R29 cab-strength and FUPS compliant.
- ABS with Electronic Braking System standard.
- Driver's SRS airbag and integrated seat belt pre-tensioners.
- In-cab airbag suspension control.
- Michelin tubeless tyres / low energy type on Highway spec model.

- Three-seat, first-class cab.
- ISRI 6860 air-suspension driver's seat.
- Integrated air-conditioning.
- DAVE infotainment system, with digital radio, DVD, MP3, voice-control and Bluetooth.

Gigamax shown with additional cost accessories.

DON'T MISS A THING.

An option that offers you the miracle of (almost) 360° vision. Operating through a unique multi-view digital touchscreen audio-visual unit, a camera system puts you all over the truck. You can have cameras in four different positions, all displaying at the same time, and even with audio. It shares the load of manoeuvring in tight spots.



CARRY LOADS IN THE CAB.

Cabs are anything but afterthoughts with Isuzu. For instance, you'll find stacks of storage space and locations for all your stuff. Along with heaps of room for you and your workmates as well, including generous stretch-out legroom. All in all, it's a very comfy and accommodating place to be.



MEET DAVE, YOUR STREET-SMART SIDEKICK.

Our Digital Audio Visual Equipment, the ultimate cab infotainment system, is right at your fingertips. Navigate through the simple menu to play your favourite songs or (digital) station, or, for even greater convenience and safety, use voice-controls for many of the functions available. Hands-free Bluetooth is standard, and sat-nav and tyre-pressure monitoring are optional. You'll never work alone.

PUSH-BUTTON SUSPENSION.

Most Gigas come with airbag rear suspension, either Hendrickson or our own. What's more, in the EXY and Gigamax, you can raise, lower or 'dump' it, from your seat, using the handy remote.



THE BEST SEAT IN THE BUSINESS.

All Gigas have the ISRI 6860 air-suspension driver's seat as standard. And it's anything but standard. It incorporates a lap-sash seatbelt, head restraint, dual-stage air lumbar/lateral support, integrated pneumatic system, adjustable shock-absorber and body-hugging upholstery from head to knee. Sharing the load for the sake of your body.



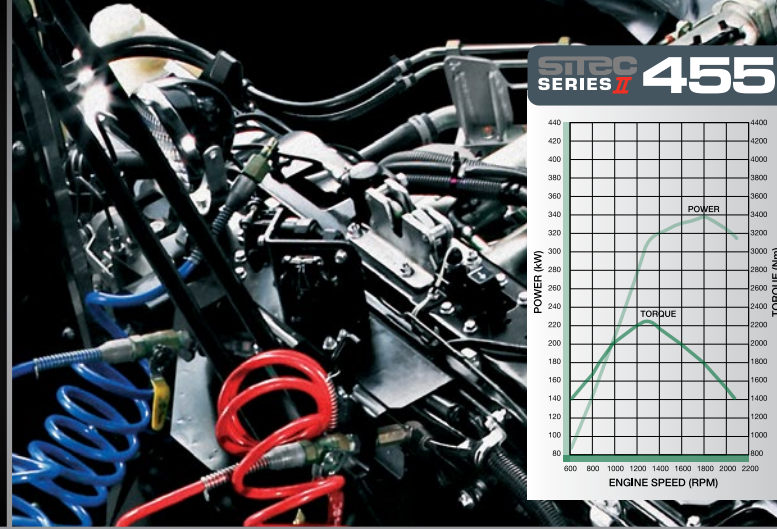
AFTER WE MAKE THE TRUCK WE MAKE THE BED.

The high-end Gigas bring you the luxury of a handy sleeper bunk with mattress and surround curtains. It complies with ADR 42 and it's very accommodating.

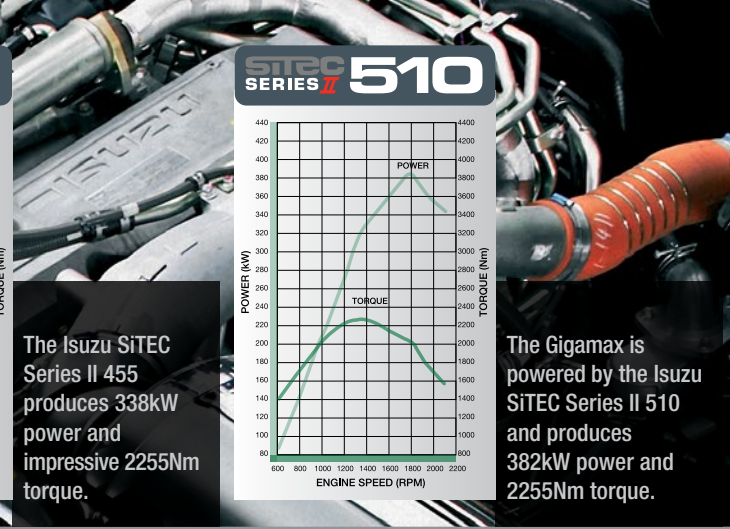


GIGAS' FIGURES.

Here you'll find the basic specifications for our Giga model range. If it leaves you undecided about which one's right for you, there's always our ISIS software programme (see over). A discussion with your Isuzu Dealer will make your choice both easier and surer. Pointing you to the one that'll best share the load with you.



The Isuzu SiTEC Series II 455 produces 338kW power and impressive 2255Nm torque.



The Gigamax is powered by the Isuzu SiTEC Series II 510 and produces 382kW power and 2255Nm torque.

SPECIFICATIONS

GIGA SERIES RANGE										
MODEL	GVM (kg)	GCM (kg)	ENGINE	POWER (kW@RPM)	TORQUE (Nm@RPM)	TRANSMISSION (GEARS/TYPE)	REAR AXLE (TYRE/RATIO)	REAR SUSP (TYRE)	TYRES	WHEELBASE (mm)
CXY 455 18-speed	24,000	57,000	SiTEC III 455	338 @ 1,800	2,255 @ 1,300	18-speed Eaton	RT-46 / 4.30	HAS 461 Airbag	Michelin XZE/XDE	4,500
CXY 455 Short Premium HWY		RT-46 / 3.42				Michelin XZA/XJE Low energy	3,885			
CXY 455 Medium Premium		54,000				RT-46 / 3.91	Michelin XZE/XDE		4,500	
CXY 455 Medium Premium HWY						RT-46 / 3.42	Michelin XZA/XJE Low energy		4,500	
CXY 455 Long Premium						RT-46 / 3.42			5,980	
CXZ 455 18-speed	24,000	57,000	SiTEC III 415	338 @ 1,800	2,255 @ 1,300	18-speed Eaton	RT-46 / 4.30	Isuzu 6-rod	Michelin XZE/XDE	4,300
CXZ 455 Premium		54,000				12-speed AMT	RT-46 / 3.91			
EXY 455	24,000	50,000	SiTEC III 455	338 @ 1,800	2,255 @ 1,300	18 speed Eaton	RT-46 / 3.73	HAS 461 Airbag	Michelin XZA/XJE Low energy	3,885
GIGA MAX 510	26,000	70,000	SiTEC III 510	382 @ 1,800	2,255 @ 1,300	6-speed manual	RT-46 / 4.10	Isuzu Airbag	Michelin XZE/XDE	3,950
GIGA MAX 510 HWY						16-speed AMT	RT-46 / 3.42		Michelin XZA/XJE Low energy	

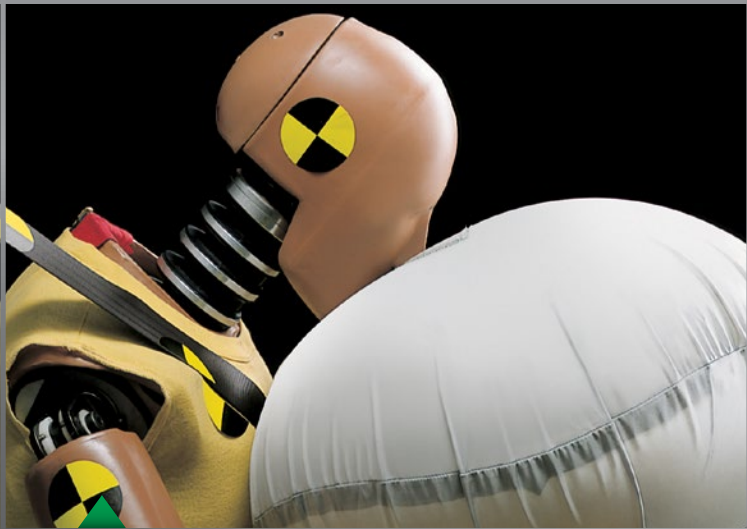
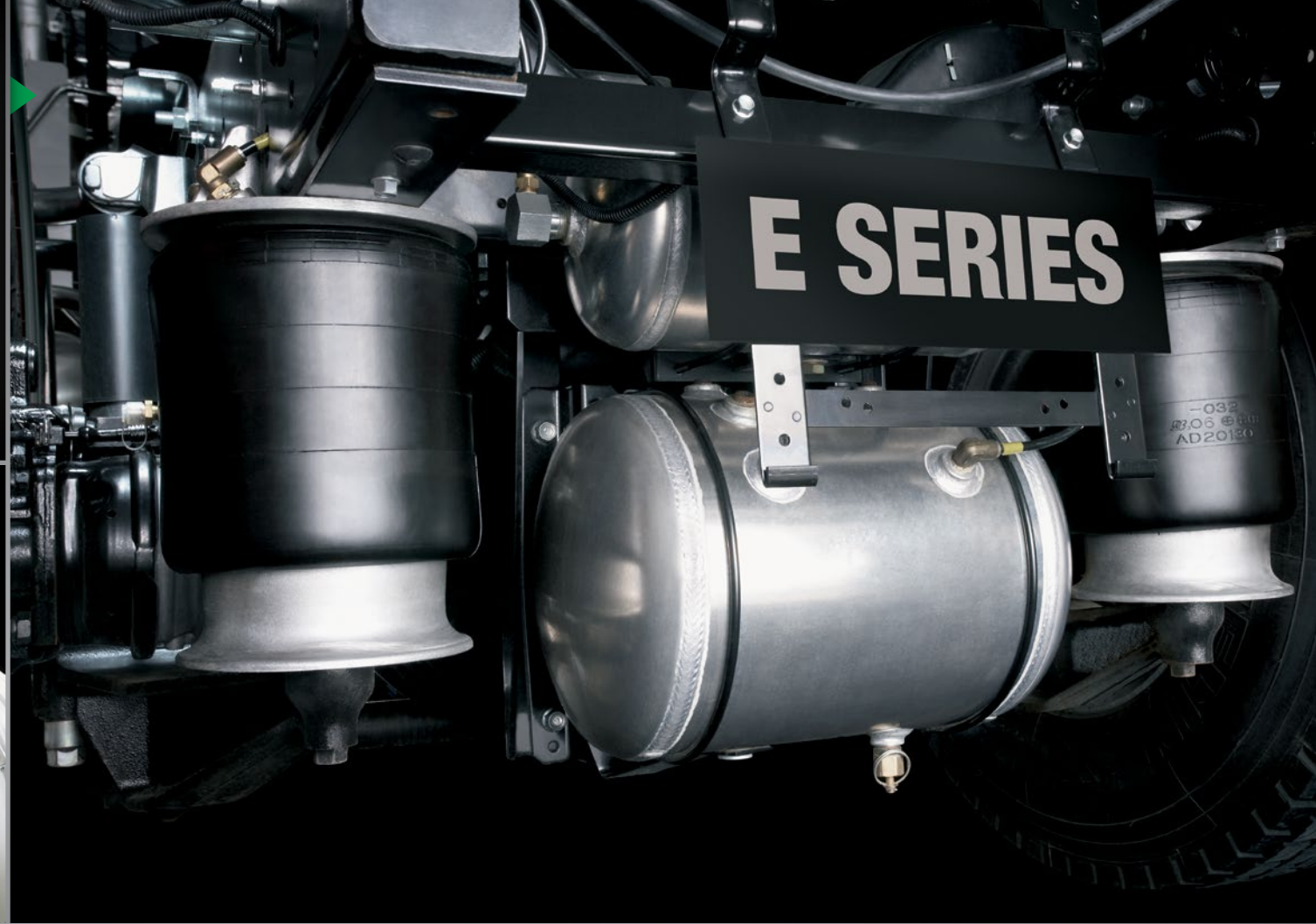
WARRANTIES[†]

MODEL	VEHICLE	ENGINE	CABIN PERFORATION CORROSION
CXY, CXZ, EXY, GIGA MAX	3 years or 500,000 kilometres or 6,500 hours	5 years or 750,000 kilometres or 10,000 hours*	3 years unlimited kilometres

[†]From delivery. *Engine warranty in the 4th and 5th year is limited to cylinder block, cylinder head and crankshaft. Note: The above chart is a brief representation of the chassis specifications within the Isuzu Giga Series model range which may change from time to time. For the latest and a detailed understanding of the model and specification variants, please refer to the applicable Isuzu model Specification Sheet. All Isuzu warranties are subject to mandatory prescribed terms under Australian Consumer law including customer guarantees. For more details visit the Isuzu website which explains Isuzu Warranties in more detail, or alternatively contact your local dealer. All warranties commence from date of delivery.

SUSPENDED ON AIR.

Most Giga come with airbag rear suspension. Either Hendrickson from the US. Or an 8-bag system from us (as shown here). They both help deliver a stable ride for the load and the driver. Some models even have an in-cab remote, so you can conveniently adjust the ride-height from your seat (see previous page).



A VERY SAFE HAVEN.

All Giga cabs comply with the latest ECE-R29 standard, so they are truly world-class. Double side-intrusion bars, seatbelt pre-tensioners and load-limiters, and driver and passenger airbags are all standard. Along with traction control and a whole list of other safety systems. In an Isuzu, you will always work safe.



IS IT A MANUAL OR AN AUTO? YES.

Several models come with Isuzu AMT, Automated Manual Transmission. It has 12 or 16 speeds and you drive it like an auto, but it functions like a manual. A very practical way in which we share the load.

ISUZU CARE.

Reliability means so much more than just a mechanically reliable truck. Isuzu Care is the most comprehensive customer care truck programme ever seen in Australia, offering a suite of innovative support services and a level of customer care that's setting new industry standards. Wherever you may be, Care's as close as Freecall 1800 035 640.



ISUZU ROADSIDE ASSIST.

Isuzu Assist is a 3-year, 24-hour roadside assistance program that comes at no extra cost with all new Isuzu Trucks. And while our trucks are renowned for their reliability, even if you run out of fuel, lose your keys, get a flat tyre (or battery), Isuzu Assist will be there to sort it out. Just Freecall 1800 947 898.

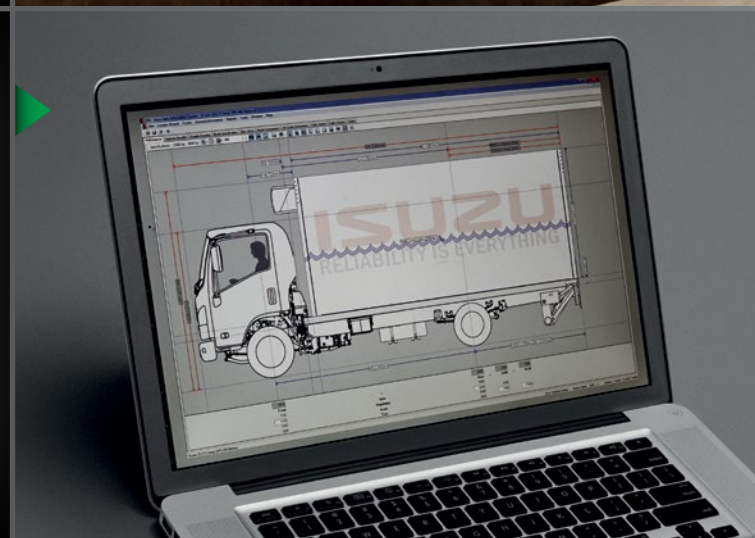


ISUZU SERVICE AGREEMENTS.

Truck maintenance costs can be unpredictable. However, Isuzu Service Agreements level out the costs of operating your Isuzu Truck. For one fixed monthly fee your truck is serviced to precise specifications by Isuzu technicians using high-tech diagnostic equipment and genuine Isuzu parts. And you can choose from a fixed-price Scheduled Services Plan right through to a comprehensive Total Repair and Maintenance Plan.

ISIS.

Isuzu Sales Information System (ISIS for short) is a software program the dealer will use to help you select the right truck and body for your application. Once it's been programmed with your information, ISIS simulates how the truck will perform in terms of its weight distribution, available power and other performance characteristics. So with ISIS, you're sure to find your perfect match.



THE CONNECTED TRUCK.

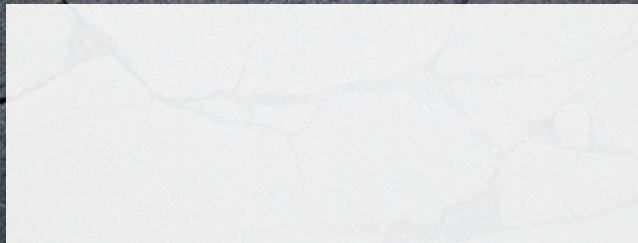
Isuzu 'Connect' telematics interconnects both truck and driver with your full support team, from the dispatcher to the service manager. To electronically, automatically and continuously share countless data, in real time, on virtually everything the truck and the driver do. From its brakes to his breaks. From how long it spent idling to where it spent the night. And in the process, makes all of you even better 'drivers', including the driver himself.



ISUZU TRUCK INSURANCE.

By joining forces with Australia's leading truck insurance specialist, NTI, Isuzu can now offer you access to a broad range of insurance products designed specifically for the transport industry, including Commercial Motor Policy, Public & Products Liability Policy, Marine Cargo Policy to cover the freight liability and carriers' cargo insurance, and Business Interruption Policy.





<p>We share the load.</p>	<p>ISUZU RELIABILITY IS EVERYTHING</p>
--	---

isuzu.com.au

TIC: Isuzu is a member of the Truck Industry Council – *Safer Greener Essential*. Isuzu Australia Limited ABN 97 006 962 572 ("IAL"). The information in this brochure was correct at time of printing, but all measurements, specifications and equipment are subject to change without notice. Some equipment may have been changed and/or is available at extra cost. IAL may make changes at any time without notice, in prices, colours, materials, equipment and models. IAL makes all reasonable attempts to ensure the availability of all vehicles and equipment. The information in this brochure is general in nature. Your Isuzu Truck Dealer can confirm all measurements, specifications and vehicle/equipment availability upon request. Any body illustrated is not standard equipment. MAR2014 F•S•A/ISZ9017