



Volkswagen

The Caravelle



The perfect shuttle.

Setting the standard for passenger transport for over 30 years.

Caravelle's confident new look makes it perfect for professional transport, while the versatile package ensures it's great for family duties too.



Standard for Caravelle Trendline.

- 2.0 litre TDI340 turbo-charged direct injection diesel engine with BlueMotion Technology
- Max power 103kW @ 3,500rpm
- Max torque 340Nm @ 1,750-2,500rpm
- 7 Speed Direct Shift Gearbox (DSG) with sport mode and Tiptronic function
- Front wheel drive
- Fuel consumption (combined) 7.7L/100km**

Exterior

- Halogen headlights
- Daytime Running Lights (DRL)
- Sliding doors, left and right
- Body coloured bumpers, door handles and exterior mirror housings
- Lifting rear tailgate with window and wiper/washer
- 16-inch steel wheels with wheel covers
- Full sized steel spare wheel

Interior

- Nine (9) seats
- Front seats height and lumbar support adjustment
- 2-seater bench seat in 2nd row with child seat anchors
- 2-seater bench seat in 3rd row with child seat anchors
- 3-seater bench seat in 4th row
- "Kutamo" cloth seat upholstery
- Leather-wrapped steering wheel, height and reach adjustable

Function

- Stop/start system and regenerative braking
- "Composition Colour" radio system with USB/AUX/SD input
- Six (6) loudspeakers
- Bluetooth® phone and audio streaming compatibility
- Steering wheel audio controls
- Cruise Control
- Electronic immobiliser
- Power steering
- Central locking with remote control
- Power windows and heated exterior mirrors
- "Climatronic" 3-zone air conditioning
- Rear window sunshades

Safety

- Driver Fatigue Detection*
- Multi-Collision Brake (MCB)
- Hill-Start Assist
- Electronic Stabilisation Programme (ESP)
- Traction Control System (TCS)
- Anti-Lock Braking System and Brake Assist
- Driver and front passenger front and side/head airbags
- Rear Park Distance Control*
- Rear View Camera*

* Safety technologies are not a substitute for the driver's responsibility of the vehicle

**Fuel consumption figures according to ADR 81/02 derived from laboratory testing. Factors including but not limited to driving style, road and traffic conditions, environmental influences, vehicle condition and accessories fitted, will in practice in the real world lead to figures which generally differ from those advertised. Advertised figures are meant for comparison amongst vehicles only. *Safety technologies are not a substitute for the driver's responsibility of the vehicle.

Spacious and Flexible

Caravelle's unique seating concept lets you customise the interior for up to 9 people and luggage.

The modular seat mounting system in the Caravelle allows the removal of any of the rear seats, expanding luggage space in a matter of moments.

The second and third row 2-person bench seats include ISOFIX and top tether anchors for the secure fitment of child seats.



Overseas model shown.



Reliable, safe and cleverly thought out.

The driver's cab in the Caravelle Trendline is equipped to cope with every challenge a busy day has to offer. High-quality materials, 3-zone climate controlled air conditioning and an advanced touch-screen infotainment system ensure Caravelle stands out.



App-Connect featuring Apple CarPlay®

Caravelle is fitted with the "Composition Colour" radio system with 5-inch colour touch screen, AUX, USB and SD card inputs plus Bluetooth® with audio streaming. Upgrading to the "Composition Media" radio or "Discover Media" navigation system (shown above) provides access to Volkswagen's App-Connect* system for integration with your smartphone.

*App-Connect is compatible for selected apps with the latest smartphone versions of iOS and Android

Cutting-edge safety systems.

Prepared to handle almost any situation.

To ensure that every drive ends as stress-free as it begins, the Caravelle is equipped with various safety systems, which are activated in critical situations as a preventative measure. Part of the onboard standard equipment is the Multi-Collision Braking System. Moments after an accident, the vehicle begins a phased braking action down to 10 km/h in order to prevent secondary collisions. Should an impact nonetheless result, driver, front passenger, and side/head airbags provide optimal protection to occupants - as standard.



Front Driver and Passenger Airbags.

Driver, front passenger and front side/head airbags offer occupants the best possible protection in the event of head-on and side impacts.



Driver Fatigue Detection.

Uses visual and acoustic warning signals to recommend that the driver takes a break as soon as it registers driving behaviour that indicates tiredness.



Anti-Lock Braking System (ABS).

Prevents wheel lock and maintains manoeuvrability.



Brake Assist System.

Registers the speed at which the brake pedal is pressed. During a reflexive or emergency braking action, it ensures that full brake pressure is built up more quickly.



Electronic Stabilisation Programme.

Prevents under- or over-steering via targeted braking of individual wheels.



Traction Control System (TCS).

Prevents wheelspin.



Electronic Differential Lock (EDL).

Distributes the engine torque to the tyres without slippage.



Hill Start Assist.

Prevents the vehicle from rolling back on inclines and makes handling easier when starting up on uphill slopes.



Daytime Running Lights.

Switch on automatically when the ignition is activated and lower the risk of an accident in daylight through increased visibility on the road.



Cruise Control.

As of a speed of 30 km/h, it maintains the set speed depending on uphill and downhill inclines.



Multi-Collision Braking System. Triggers braking after a collision, with the aim of preventing secondary collisions.

The Multi-collision Braking System activates when two independent sensors detect an accident. After a short delay, the vehicle begins a phased braking action down to 10 km/h, during which the driver can take over at any time.

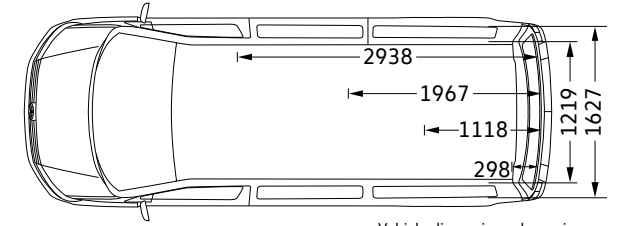
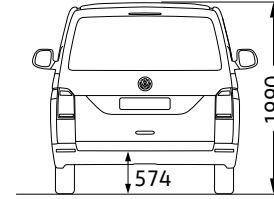
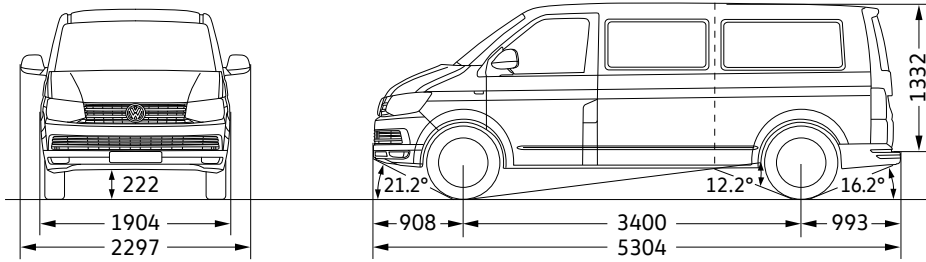


Rear Park Distance Control. Emits audible warnings when obstacles are detected behind the vehicle when parking, and also provides a visual display of the vehicle's distance from the obstacles (Discover media shown).



Rear View Camera (RVC). Simplifies parking by showing a limited view of the area behind the vehicle on the display of the radio or navigation system. Additional static guidelines facilitate the parking process (Discover media shown).

Dimensions



Vehicle dimensions shown in mm.

Full specifications are available at www.volkswagen-commercial.com.au

Exterior Colours

Solid paint finishes



Candy White | Solid paint finish | B4B4



Cherry Red | Solid paint finish | 4B4B



Reflex Silver | Metallic paint finish | 8E8E



Indium Grey | Metallic paint finish | X3X3



Deep Black | Pearl effect paint finish | 2T2T



Acapulco Blue | Metallic paint finish | 2W2W



Starlight Blue | Metallic paint finish | 3S3S



Bamboo Green | Metallic paint finish | 3T3T



Mojave Beige | Metallic paint finish | 1B1B



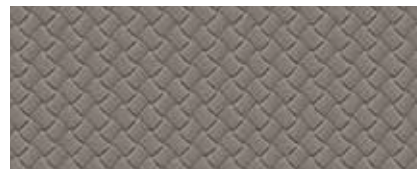
Chestnut Brown | Metallic paint finish | H4H4

Metallic and Pearlescent paint finishes

Seat upholstery



Kutamo
Cloth seat upholstery | Moon Rock Titanium Black



Mesh
Leatherette seat upholstery* | Moon Rock Titanium Black | Optionally available

Please note that Metallic and Pearl Effect paint are optional at extra cost. The print process does not allow for exact reproduction of the exterior or the upholstery colours. Please contact your Volkswagen Dealer for further information on colours and upholstery combinations. * Leatherette consists wholly of artificial leather.

General information

Owning a Volkswagen

Volkswagen New Vehicle Warranty

Every new Volkswagen vehicle is covered by a three year unlimited kilometre manufacturer's warranty, which includes Volkswagen Assist (24-hour roadside assistance). Every new Volkswagen vehicle is also covered by a 3 year paintwork and 12-year anticorrosion perforation warranty. For further information regarding this New Vehicle Warranty, including pricing and terms and conditions, please consult your local Volkswagen dealer or visit www.volkswagen.com.au. Your rights under this warranty sit alongside the consumer guarantees under the Competition and Consumer Act 2010 which cannot be excluded.

Volkswagen Assist – 24-Hour Roadside Assistance

As a valued customer, you can be assured that wherever you travel within Australia, you will have access to roadside assistance, 24 hours a day, 365 days a year. This is complimentary for the duration of the vehicle's original Volkswagen warranty period. You will receive help in the event of a breakdown or accident and, if required, your vehicle will be mobilised or transported to an Authorised Volkswagen Workshop. As a Volkswagen owner you will also have access to the additional benefits of accommodation and car rental if your vehicle cannot be mobilised within 24 hours, when you are over 100km away from home.

Volkswagen Genuine Parts®

Volkswagen Genuine Parts® are designed for your vehicle and approved by Volkswagen, with particular regard to safety. The workmanship, dimensional accuracy and materials used in these parts comply with factory specifications. To ensure safety and reliability, Volkswagen recommends the use of Volkswagen Genuine Parts®. Your authorised Volkswagen Dealers offers a two-year unlimited kilometre warranty on Genuine Parts from the date of purchase (exclusions apply), visit www.volkswagen.com.au.

Volkswagen Financial Services

Buying, borrowing or leasing, Volkswagen Financial Services will certainly make you think differently about financing and insuring your new Volkswagen. Committed to meeting the needs of Volkswagen drivers across Australia, we offer a range of leasing, financing and insurance products, each with distinct advantages depending on your specific circumstances. We can tailor a solution to suit your individual requirements, so you can rest assured that there will be no surprises along the way. Speak to your local participating authorised Volkswagen Dealer today to put together a solution that best suits your lifestyle.

Volkswagen Choice Guaranteed Future Value^

Volkswagen Choice is a finance program available to approved applicants of Volkswagen Financial Services only, which provides Volkswagen owners protection around your Volkswagen's future value#, whilst offering a simple monthly instalment financing option. Enjoy the peace of mind of knowing the minimum value you can receive for your vehicle at the end of your contracted term. You can choose to either trade-in, return or retain your Volkswagen – it's your choice. Learn more about how to protect your investment by visiting www.volkswagen.com.au/en/choice.html today.

Volkswagen Assured Service

What you can expect as standard when servicing through our authorised Volkswagen dealer network is an expert team, trained by Volkswagen utilising specialist Volkswagen diagnostic equipment ensuring they're able to cater for all of your Volkswagen's servicing and repair needs. They also have access to the full Volkswagen Genuine Parts catalogue making sure any part replaced during a service or repair is replaced with a Volkswagen Genuine Part. What's more, your Volkswagen will be returned in immaculate condition, cleaned and vacuumed. Add these together and you can rest assured there's no better place to keep your Volkswagen running like a Volkswagen.

To find out more, go to www.volkswagen.com.au/en/choice.html

^The Volkswagen Choice Program consists of an option to require Volkswagen Financial Services to purchase your vehicle at the end of your Volkswagen Financial Services Chattel Mortgage, Consumer Loan or Hire Purchase for a value (known as the Guaranteed Future Value) determined by Volkswagen Financial Services and set out in your contract. The Guaranteed Future Value is not a representation by Volkswagen Financial Services as to the likely market value of your vehicle as at the end of your contract. The option is available on new and demonstrator Volkswagen vehicles for selected models only. Please verify with your dealership vehicles that are eligible for the program. #If vehicles are not returned in an acceptable condition, as defined in the terms and conditions or exceed kilometre restrictions the Guaranteed Future Value will be reduced. See the Volkswagen Choice Fair Wear and Tear Guide for more information on the required conditions and circumstances. The cost of the Volkswagen Choice Program is incorporated into the applicable interest rate. Please read the full terms and conditions. Please consider whether these products and services are appropriate for your circumstances. Before acting on any of the information on this page, please seek independent financial and tax advice. Full terms and conditions are available upon application. Available only to approved applicants of Volkswagen Financial Services. Subject to credit assessment. Fees and charges apply. Fleet, government, rental buyers, hire car and chauffeur companies are excluded. Available at participating Volkswagen dealers. Volkswagen Financial Services is a trading name of Volkswagen Financial Services Australia Pty Limited ABN 20 097 071 460. Australian Credit Licence 389344.

The Caravelle

Volkswagen Group Australia Pty Ltd
24 Muir Road Chullora NSW 2190
ABN 14 093 117 876

Printed in Australia
August 2017
www.volkswagen.com.au

Publication: VWCCARFLYMY18

Your Volkswagen dealer.

Important information

Apple CarPlay® is a registered trademarks of Apple Inc. Android Auto™ is a registered trademark of Google Inc. MirrorLink® is a registered trademark of Car Connectivity Consortium LLC. Bluetooth® is a registered trademark of Bluetooth SIG Inc.

Volkswagen is distributed by Volkswagen Group Australia Pty Ltd, 24 Muir Road, Chullora, NSW 2190, ABN 14 093 117 876. Specifications are as planned at August 2017, for Model Year 18 and are subject to change without notice or obligation. All information in this brochure is correct at the time of publication, however variations may occur from time to time and Volkswagen, in so far as it is permitted by law to do so, shall not be liable in any way as a result of any reliance by any person on anything contained in this brochure. Authorised Volkswagen dealers will provide up-to-date information on model application, design feature, prices and availability on request. All colours are a general guide only, as the printing process cannot reproduce the actual exterior colour appearance. See your dealer to confirm colour/model availability.



Volkswagen

The Caravelle

Specifications



Caravelle shown with optional Exterior Upgrade Package.

Features and Specifications

Safety and security

Caravelle Trendline

Airbags

Front airbag for driver and front passenger



Side/head airbags for driver and front passenger



Seat belts

3-point seat belts with height adjustment and belt tensioners for driver and front passenger



3-point seat belts for all rear seats



Seat belt warning light and buzzer for driver's seat



Child Restraints

Child seat top tether anchorage points (for all seats in 2nd and 3rd row)



ISOFIX child seat anchorage points (for all seats in 2nd and 3rd row)



Brakes and Traction Control

Multi-Collision Brake (MCB)



Electronic Stabilisation Programme (ESP)



Anti-Lock Braking System (ABS)



Brake Assist System (BA)



Traction Control System (TCS)



Electronic Differential Lock (EDL)



Hill Hold Control



Driver Assistance Technology*

Driver Fatigue Detection



Rear Park Distance Control with rear view camera system



Lighting

Halogen headlights (H4)



Daytime Running Lights (DRL)



Headlight range adjustment (manual)



High stop light



Safety and security

Caravelle Trendline

Locking

Engine immobiliser (electronic)



Central locking system with radio remote control and interior release mechanism



Two (2) remote control folding keys and one (1) rigid key



Child safety locks on rear sliding doors and tailgate



Head Restraints

Front safety head restraints, height adjustable



Rear head restraints, height adjustable for all seating positions



Exterior Equipment / Styling

Doors

Sliding door, left, in passenger compartment



Sliding door, right, in passenger compartment



Lifting tailgate with window



Electric sliding doors and power latching tailgate



Windows

Heat-insulating windshield made of laminated glass



Heat-insulating glass (green)



Side windows (opening) in sliding doors



Side windows (fixed) in rear of passenger compartment



Windscreen wiper intermittent control



Heated rear window with wiper/washer system



Power windows with comfort operation and circuit breaker (front)



Exterior Equipment / Styling

Caravelle Trendline

Body Enhancements

Body coloured bumpers

Body coloured door handles and sliding door covers

Body coloured exterior mirror housings

Black grained radiator grille with 1 decorative chrome strip

Roof rack preparation rails

Front and rear mud guards

Trailer hitch preparation

Wheels and Tyres

16" steel wheels with full wheel covers
- 215/65 R16 C106/104T tyres

4 x 16" alloy wheels - CLAYTON
- 215/65 R16 C106/104T tyres

Steel spare wheel - full size, OE tyre

Tool kit with vehicle jack

●

●

●

●

●

●

●

●

○

●

●

Comfort & Convenience

Caravelle Trendline

Air Conditioning

Climatronic air conditioning system, with dual front temperature control and rear controls

Air recirculation vents in headliner for rear passenger compartment

Dust and pollen filter

-
-
-

Cruise Control

Cruise Control

-

Luggage Area

Lashing rings for load restraint

-

In-Car Entertainment and Technology

Composition Colour audio system

5" colour touch screen display, AM/FM radio with phase diversity tuner, CD player (MP3/WMA compatible), AUX and SD card slot, external USB input, and six (6) speakers. Car menu with convenience and service settings. Includes display for park distance control.

-

Composition Media audio system with App-Connect[^]

6.33" colour touch screen display with proximity sensor, AM/FM radio, CD player (MP3/WMA compatible), SD card slot, external AUX and USB inputs, and six (6) speakers. Car menu with convenience and service settings. Includes display for park distance control. App-Connect USB interface for Apple CarPlay[®], Android Auto[™] and MirrorLink[®] in front centre console.

-

Discover Media audio and satellite navigation system with App-Connect[^] and Volkswagen Media Control

6.33" colour touch screen display with proximity sensor, AM/FM radio, CD player (MP3/WMA compatible), 2 x SD card slots for music and navigation data, external AUX and USB inputs, and six (6) speakers. 2D and 3D (bird's eye) map views. Car menu with convenience and service settings. Includes display for park distance control. App-Connect USB interface for Apple CarPlay[®], Android Auto[™] and MirrorLink[®] in front centre console.

-

Voice Control (available with Discover Media only)

-

Bluetooth[®] phone connectivity with contacts display and Bluetooth[®] audio streaming, operation via touch screen audio unit or Multi-Function Display

-

Audio, telephone, cruise control and Multi-Function Display controls mounted on steering wheel

-

12-volt socket on dashboard (cigarette lighter)

-

Instrumentation

Speedometer & tachometer, electronic odometer and trip meter, service interval display, fuel and coolant gauges, low fuel warning light, adjustable illumination

-

Multi-Function Display (MFD Plus) - trip time, trip length, average and current speed, average and current fuel consumption, display until empty and ambient temperature, digital clock, vehicle status, audio, telephone and navigation (if fitted) menus

-

[^] App-Connect is compatible for selected apps with the latest smartphone versions of iOS and Android

Comfort & Convenience

Caravelle Trendline

Interior Lighting

Reading lights, front

Convenience lighting in rear

Roof lights in passenger compartment

Step illumination in passenger compartment

Interior Trims

Leather-wrapped gearshift knob

Sunshades for side windows in passenger compartment

Moulded headlining in passenger area

Carpet floor covering in cab and passenger compartment

Chrome accents on air vents

Mirrors

Exterior mirrors (left: convex, right: aspherical)

Exterior mirrors, power adjustable and heated

Dimming breakaway interior rear view mirror

Power Steering

Rack and pinion power steering



Comfort & Convenience

Caravelle Trendline

Seating

Height adjustment for both front seats



Lumbar support (manually adjustable) for both front seats



Modular seat mount system (all rear seats removable)



2-seater bench with armrest (installed on right side of vehicle) in 2nd row



2-seater bench with armrest (installed on left side of vehicle) in 3rd row



3-seater bench (folding backrest) in 4th row



Cloth seat covering "Kutamo"



Leatherette seat covering*



Overhead grab handle for front passenger



Overhead grab handles for rear seat passengers



A-pillar grab handles for driver and front passenger



B-pillar grab handles for rear seat passengers



Steering Wheel

3 spoke leather covered steering wheel



Audio, telephone, cruise control and Multi-Function Display controls mounted on steering wheel



Steering wheel height and tilt adjustment



Storage

Front door pockets



Overhead storage compartment



Glove compartment with lockable lid



Two (2) cup holders on upper dashboard



Central upper storage compartment (open)



Two (2) open storage compartments above glovebox



Two (2) small storage compartments between glovebox and gear lever



Open storage area on either side of dashboard



Ashtray, portable



Front sunvisors with ticket holder and vanity mirror



Coat hooks throughout passenger area



*Leatherette consists wholly of artificial leather.

Body Builder Items

Caravelle Trendline

Electrical interface (terminal block under driver's seat)

Optional Packages

Interior Comfort Package

Light and Sight system: auto dimming inside rear view mirror; automatic headlight activation with separate daytime running lights, "Leaving Home" and manual "Coming Home" function; rain sensing wipers
Armrests for driver and front passenger seats
Storage compartments on side of front seats
12-volt socket on upper dashboard

Technical Specification

Engine	2.0 litre TDI340 BlueMotion Technology
Type	4 cylinder inline turbocharged direct injection diesel with engine Start/Stop system^
Max power, kW @ rpm	103 @ 3,500
Max torque, Nm @ rpm	340 @ 1,750-2,500
Cubic capacity, litres/cc	1,968
Bore/stroke (mm)	81.0 x 95.5
Compression ratio	16.5:1
Fuel type (recommended)	Diesel DIN EN 590
Transmission	7 Speed Direct Shift Gearbox (DSG) with sport mode and Tiptronic function. Includes coasting feature.
Driven wheels	Front Wheel Drive
Fuel Consumption**	
Combined, L/100km	7.7
Urban, L/100km	9.5
Extra Urban, L/100km	6.7
Fuel tank capacity (L)	80
Running Gear	
Suspension	
Front Axle	Independent McPherson struts, sub-frame with coil springs and gas filled dampers
Rear Axle	Semi-trailing independent rear axle with coil springs and anti-roll bar
Steering	Rack and pinion power steering
Brake systems	Anti-lock Braking System (ABS) with Electronic Brake-Pressure Distribution (EBD), Brake Assist and Electronic Stabilisation Program (ESP). Brake Energy Recuperation.
Brakes	Power assisted Hydraulic
Front	Ventilated disc 308mm
Rear	Ventilated disc 294mm

^The Start/Stop system is designed to reduce fuel consumption and CO2 emissions. It achieves this by automatically switching off the engine while the vehicle is stationary and then starting it again automatically when the driver wants to drive off. There are certain operating conditions where the Start/Stop system is deactivated (e.g. during engine warm-up), please refer to the owner's manual for full operating information.

**Fuel consumption figures according to ADR 81/02 derived from laboratory testing. Factors including but not limited to driving style, road and traffic conditions, environmental influences, vehicle condition and accessories fitted, will in practice in the real world lead to figures which generally differ from those advertised. Advertised figures are meant for comparison amongst vehicles only.

Weights and Capacity

Weights

Gross Vehicle Weight (GVM, kg)	3,000
Unladen Mass ¹ (kg)	2,137
Roof Load (kg)	100
Towing Capacity (kg)	
Braked [‡]	2,500
Unbraked	750
Towbar Load Limit (kg)	100

Exterior Dimensions

Wheelbase (mm)	3,400
Vehicle Length (mm)	5,304
Vehicle Width (mm) excluding mirrors	1,904
Vehicle Width (mm) including mirrors	2,297
Vehicle Height (mm)	1,990
Front Overhang (mm)	908
Rear Overhang (mm)	993
Ground Clearance (mm)	222
Slope Angle - Front (degrees)	21.2
Slope Angle - Rear (degrees)	16.2
Ramp Angle (degrees)	12.2
Turning Circle (m)	13.2

1. The Unladen Mass (UM) includes 10L of fuel, vehicle fluids and no occupants. Figures quoted are for base model vehicles only.

[‡] Please note, Volkswagen Group Australia does not endorse or will not be held liable for any claim, loss or damage arising from the use or fitment of electronic trailer brakes.

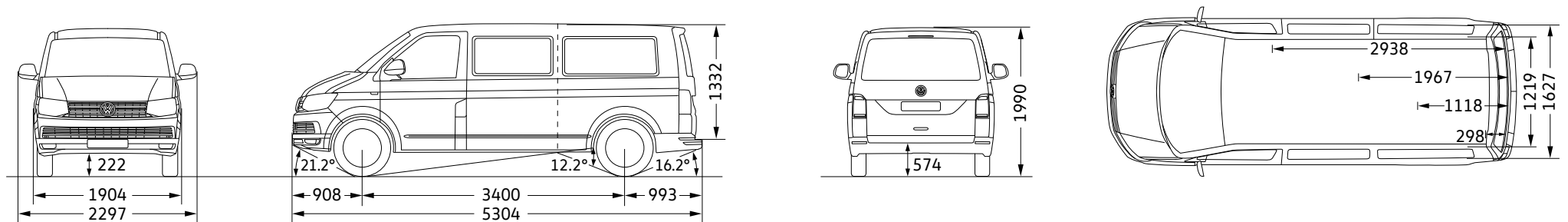
Weights and Capacity

Interior

Seating capacity	9 (2 + 2 + 2 + 3)
Cargo Volume (L) - rear seats removed	6,700
Load Compartment Length (mm) - without rear seats	2,938
Load Compartment Length (mm) - behind 2nd row of seats	1,967
Load Compartment Length (mm) - behind 3rd row of seats	1,118
Load Compartment Length (mm) - behind 4th row of seats	298
Load Compartment Width (mm) - maximum	1,627
Load Compartment Width (mm) - at wheel arches	1,219
Load Compartment Height (mm)	1,332
Sliding Door Width (mm)	1,017
Sliding Door Height (mm)	1,261
Tailgate Width (mm)	1,439
Tailgate Height (mm)	1,276
Load Sill Height (mm)	574

Dimensions

Caravelle Trendline



Exterior Colours

Solid paint finishes



Candy White | Solid paint finish | B4B4



Cherry Red | Solid paint finish | 4B4B

Metallic and Pearlescent paint finishes



Reflex Silver | Metallic paint finish | 8E8E



Indium Grey | Metallic paint finish | X3X3



Deep Black | Pearl effect paint finish | 2T2T



Acapulco Blue | Metallic paint finish | 2W2W



Starlight Blue | Metallic paint finish | 3S3S



Bamboo Green | Metallic paint finish | 3T3T



Mojave Beige | Metallic paint finish | 1B1B

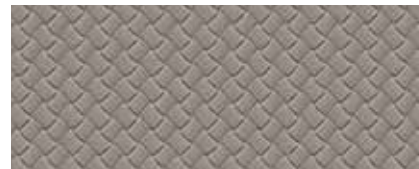


Chestnut Brown | Metallic paint finish | H4H4

Seat upholstery



Kutamo
Cloth seat upholstery | Titanium Black / Moon Rock Grey



Mesh
Leatherette seat upholstery* | Titanium Black / Moon Rock Grey | Optionally available

Please note that Metallic and Pearl Effect paint are optional at extra cost. The print process does not allow for exact reproduction of the exterior or the upholstery colours. Please contact your Volkswagen Dealer for further information on colours and upholstery combinations. *Leatherette consists wholly of artificial leather.

General information

Owning a Volkswagen

Volkswagen New Vehicle Warranty

Every new Volkswagen vehicle is covered by a three year unlimited kilometre manufacturer's warranty, which includes Volkswagen Assist (24-hour roadside assistance). Every new Volkswagen vehicle is also covered by a 3 year paintwork and 12-year anticorrosion perforation warranty. For further information regarding this New Vehicle Warranty, including pricing and terms and conditions, please consult your local Volkswagen dealer or visit www.volkswagen.com.au. Your rights under this warranty sit alongside the consumer guarantees under the Competition and Consumer Act 2010 which cannot be excluded.

Volkswagen Assist – 24-Hour Roadside Assistance

As a valued customer, you can be assured that wherever you travel within Australia, you will have access to roadside assistance, 24 hours a day, 365 days a year. This is complimentary for the duration of the vehicle's original Volkswagen warranty period. You will receive help in the event of a breakdown or accident and, if required, your vehicle will be mobilised or transported to an Authorised Volkswagen Workshop. As a Volkswagen owner you will also have access to the additional benefits of accommodation and car rental if your vehicle cannot be mobilised within 24 hours, when you are over 100km away from home.

Volkswagen Genuine Parts®

Volkswagen Genuine Parts® are designed for your vehicle and approved by Volkswagen, with particular regard to safety. The workmanship, dimensional accuracy and materials used in these parts comply with factory specifications. To ensure safety and reliability, Volkswagen recommends the use of Volkswagen Genuine Parts®. Your authorised Volkswagen Dealers offers a two-year unlimited kilometre warranty on Genuine Parts from the date of purchase (exclusions apply), visit www.volkswagen.com.au.

Volkswagen Financial Services

Buying, borrowing or leasing, Volkswagen Financial Services will certainly make you think differently about financing and insuring your new Volkswagen. Committed to meeting the needs of Volkswagen drivers across Australia, we offer a range of leasing, financing and insurance products, each with distinct advantages depending on your specific circumstances. We can tailor a solution to suit your individual requirements, so you can rest assured that there will be no surprises along the way. Speak to your local participating authorised Volkswagen Dealer today to put together a solution that best suits your lifestyle.

Volkswagen Choice Guaranteed Future Value^

Volkswagen Choice is a finance program available to approved applicants of Volkswagen Financial Services only, which provides Volkswagen owners protection around your Volkswagen's future value#, whilst offering a simple monthly instalment financing option. Enjoy the peace of mind of knowing the minimum value you can receive for your vehicle at the end of your contracted term. You can choose to either trade-in, return or retain your Volkswagen – it's your choice. Learn more about how to protect your investment by visiting www.volkswagen.com.au/en/choice.html today.

Volkswagen Assured Service

What you can expect as standard when servicing through our authorised Volkswagen dealer network is an expert team, trained by Volkswagen utilising specialist Volkswagen diagnostic equipment ensuring they're able to cater for all of your Volkswagen's servicing and repair needs. They also have access to the full Volkswagen Genuine Parts catalogue making sure any part replaced during a service or repair is replaced with a Volkswagen Genuine Part. What's more, your Volkswagen will be returned in immaculate condition, cleaned and vacuumed. Add these together and you can rest assured there's no better place to keep your Volkswagen running like a Volkswagen.

To find out more, go to www.volkswagen.com.au/en/choice.html

^The Volkswagen Choice Program consists of an option to require Volkswagen Financial Services to purchase your vehicle at the end of your Volkswagen Financial Services Chattel Mortgage, Consumer Loan or Hire Purchase for a value (known as the Guaranteed Future Value) determined by Volkswagen Financial Services and set out in your contract. The Guaranteed Future Value is not a representation by Volkswagen Financial Services as to the likely market value of your vehicle as at the end of your contract. The option is available on new and demonstrator Volkswagen vehicles for selected models only. Please verify with your dealership vehicles that are eligible for the program. #If vehicles are not returned in an acceptable condition, as defined in the terms and conditions or exceed kilometre restrictions the Guaranteed Future Value will be reduced. See the Volkswagen Choice Fair Wear and Tear Guide for more information on the required conditions and circumstances. The cost of the Volkswagen Choice Program is incorporated into the applicable interest rate. Please read the full terms and conditions. Please consider whether these products and services are appropriate for your circumstances. Before acting on any of the information on this page, please seek independent financial and tax advice. Full terms and conditions are available upon application. Available only to approved applicants of Volkswagen Financial Services. Subject to credit assessment. Fees and charges apply. Fleet, government, rental buyers, hire car and chauffeur companies are excluded. Available at participating Volkswagen dealers. Volkswagen Financial Services is a trading name of Volkswagen Financial Services Australia Pty Limited ABN 20 097 071 460. Australian Credit Licence 389344.

The Caravelle

Volkswagen Group Australia Pty Ltd
24 Muir Road Chullora NSW 2190
ABN 14 093 117 876

Printed in Australia
August 2017
www.volkswagen.com.au

Publication: VWCCRASPECMY18

Your Volkswagen dealer.

Important information

Apple CarPlay® is a registered trademarks of Apple Inc. Android Auto™ is a registered trademark of Google Inc. MirrorLink® is a registered trademark of Car Connectivity Consortium LLC. Bluetooth® is a registered trademark of Bluetooth SIG Inc.

Volkswagen is distributed by Volkswagen Group Australia Pty Ltd, 24 Muir Road, Chullora, NSW 2190, ABN 14 093 117 876. Specifications are as planned at August 2017, for Model Year 18 and are subject to change without notice or obligation. All information in this brochure is correct at the time of publication, however variations may occur from time to time and Volkswagen, in so far as it is permitted by law to do so, shall not be liable in any way as a result of any reliance by any person on anything contained in this brochure. Authorised Volkswagen dealers will provide up-to-date information on model application, design feature, prices and availability on request. All colours are a general guide only, as the printing process cannot reproduce the actual exterior colour appearance. See your dealer to confirm colour/model availability.