



Volkswagen

The Multivan



Captivating, even in its sixth generation.

The Multivan has been the perfect travel companion for over 65 years, accompanying drivers through the endless demands of everyday life and leisure time. Versatility, quality and perfection right down to the smallest detail – this is what makes the Multivan so enticing.

LOW FUEL CONSUMPTION.

Thanks to highly efficient diesel engines.

MAXIMUM FLEXIBILITY.

Intelligent rail system for optimal use of space.

EFFICIENT BLUEMOTION TECHNOLOGY.

As standard for all models.

STATE-OF-THE-ART INFOTAINMENT SYSTEMS.

Intuitive operation, new function, excellent connectivity.

MOST OFF-ROAD READY VEHICLE IN ITS CLASS.

Thanks to the combination of 4MOTION all-wheel drive, Hill Descent Assist, and mechanical differential lock.

HIGH QUALITY INTERIOR DESIGN.

Numerous storage options, newly designed interior.

ADVANCED DRIVER ASSISTANCE SYSTEMS.*

From ACC to "Front Assist" and the multi-collision braking system



Multivan Comfortline

* Safety technologies are not a substitute for the driver's responsibility of the vehicle.

Multivan Highline shown with optional Springfield alloy wheel.



Multivan Highline

**Standard for all
Multivan Comfortline.**

AVAILABLE IN SHORT AND LONG BODY STYLE.

Exterior

- Halogen headlights
- Daytime running lights (DRL)
- Electric sliding doors, left and right
- Power latching tailgate with windows and wiper/washer
- 16-inch alloy wheels - CLAYTON (Short Wheelbase)
- 17-inch alloy wheels - DEVONPORT (Long Wheelbase)

Interior

- Seven (7) seats
- Comfort seating in the 1st row of seats with height adjustment, lumbar support, and with 2 armrests for each of the front seats
- 2 rotatable seats in the 2nd row with ISOFIX and top tether child seat mounting points and armrests
- 3-seater bench seat in the 3rd row with reclining function, ISOFIX child seat mounting points (outer seats) and top tethers (all seats)
- Seat rail system for longitudinal adjustment of rear seats
- "Panduro" cloth seat upholstery
- Leather steering wheel and leather gear lever knob

Function

- Stop/start system and regenerative braking
- "Composition Media" radio system with USB/AUX/SD input and App-Connect[^]
- 6 loudspeakers
- Bluetooth[®] phone and audio streaming capability
- Steering wheel audio controls
- Height and reach adjustable steering wheel
- Cruise Control
- Power steering
- Central locking with remote control
- Power windows and exterior mirrors
- "Climatronic" 3-zone air conditioning with anti-allergen filter
- "Light & Sight" package with rain-sensing wipers, automatically dimming inside rear view mirror and automatic headlights

Safety

- Multi-Collision Brake (MCB)
- Driver Fatigue Detection*
- Driver and front passenger front and side/head airbags
- Rear curtain airbags (Short Wheelbase only)
- Electronic Stabilisation Programme (ESP)
- Hill-Start Assist
- Traction Control System (TCS)
- Anti-lock braking system with brake assist
- Child lock on sliding doors in passenger compartment
- Front and rear parking sensors*
- Rear View Camera*

**Additional standard equipment on the
Multivan Highline & Multivan
Executive.**

**HIGHLINE AVAILABLE IN SHORT BODY STYLE ONLY.
EXECUTIVE AVAILABLE IN LONG BODY STYLE ONLY.**

Exterior

- LED headlights and LED tail lights
- 17-inch alloy wheels - DEVONPORT
- Rear privacy glass
- Electric opening and closing rear tailgate
- Chrome package (chrome trims on the side and rear plus additional chrome on grille)
- Fog lights with static cornering light

Interior

- "Discover Media" satellite navigation system with App-Connect[^]
- Voice control, digital voice enhancement, and Volkswagen Media Control
- "Nappa" leather appointed seat upholstery[~]
- Seat heating for front seats
- Power assisted front seats with 12-way adjustment
- Driver's seat memory system
- Ambient interior lighting
- "Premium" multi-colour multi-function display
- Multi-function table in passenger compartment

Function

- Servotronic speed-dependent power-assisted steering

Safety

- Side Assist* (Highline only)
- Adaptive Cruise Control* (ACC)
- "Front Assist" ambient traffic monitoring with City Emergency Braking system*
- Anti-theft alarm system with interior monitoring, back-up horn and tow-away warning

4MOTION model available for Highline only.

[^]App-Connect is compatible for selected apps with the latest smartphone versions of iOS and Android.

* Safety technologies are not a substitute for the driver's responsibility of the vehicle.

[~]Leather appointed seat upholstery has a combination of genuine and artificial leather, but are not wholly leather.

Space for maximum flexibility.



Multivan Comfortline shown with optional Alcantara® leather appointed seats~ and multi-function table.

The Multivan offers a whole lot more than a whole lot of space. Its unparalleled flexibility is perfect for people that are always on the move. With up to seven comfortable seats, you and your passengers will appreciate the ample head and leg room, even in the second and third rows of seats. For a rearward facing seating arrangement, the individual seats in the second row can simply be rotated by 360° in the blink of an eye – no complicated reassembly needed.

To create more space for luggage or shopping, you can remove the individual seats and the bench seat, while the numerous sets of lashing eyes prevent your luggage from sliding around during the journey.

Multi-function table. This table not only provides a round surface, but also several drawers for small and large utensils. When not in use, the table top can be turned by 90°, folded together and lowered into the base. The multifunction table can then slide along the two extra centre rails between the single seats. |CL|HL|EX|

~Leather appointed seats have a combination of genuine and artificial leather, but are not wholly leather.

Standard equipment Optional extra |CL| Comfortline |HL| Highline |EX| Executive



01



02



03



04

Short Wheelbase



Long Wheelbase



40cm extra for even more possibilities.

Expand your options with the long wheelbase Multivan.

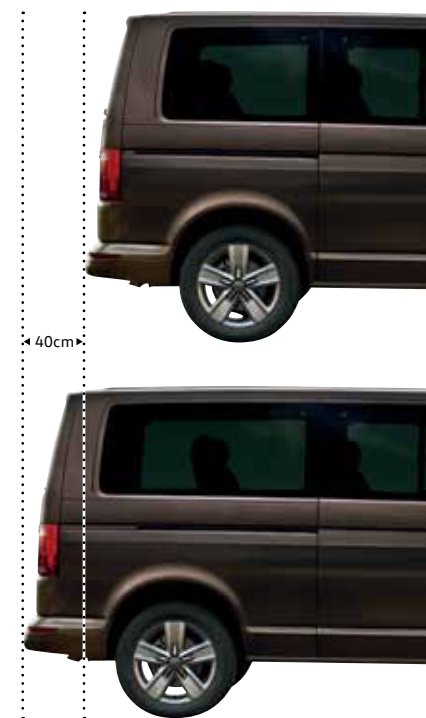
Compare the short wheelbase to the long wheelbase: 0.9m³ more luggage compartment space

01 Rotating seats. Simply lift a lever on the seat-base to swivel the 2nd row Captain's chairs up to 360°. | CL | HL | EX |

02 Longitudinal adjustment. All rear seats can be moved forwards or backwards to suit the job at hand. | CL | HL | EX |

03 Rail system. No matter what your requirements are you can rearrange the 5.8 m³ (with short wheelbase) or 6.7 m³ (with long wheelbase) passenger and luggage space with the aid of the ingenious rail system, which allows for simple and continuous sliding of the 3-seater bench seat and individual seats. The rail cover is simple to remove, making it even easier to remove and reinstall the 3-seater bench seat, and individual seats. | CL | HL | EX |

04 3-seater bench seat. The 3-person seat is contoured for comfort and suits even the tallest passengers thanks to Multivan's generous head space. Longitudinal adjustment allows you to maximise leg or luggage space. | CL | HL | EX |





Multivan Highline shown.

First class comfort and convenience.



02

01 Deluxe dashboard. The horizontal lines of the exterior design are mirrored inside by the newly designed dash panel. The harmonious interplay of the decorative inserts, decorative trim and interior colour creates a cosy atmosphere. Numerous practical storage and stowage options round off the benefits offered. | CL | HL | EX |

- Upper storage pocket in the driver and front passenger door
- Middle compartment with lid
- Glove compartment, above, with lid
- Glove compartment, below, with lockable lid
- Storage compartment with lid, 12 V socket
- 2 cup holders
- Bottle compartment with lid, 1.0 litre

01



02 Electrical 12-way seat adjustment. The driver and front passenger seats of Multivan Highline and Executive can be adjusted electrically. They can be adjusted in terms of lumbar support, backrest tilt, seat height as well as seating surface tilt and length in order to find your ideal seating position. Three different seat configurations can be saved for the driver's seat using the memory function. Electric 12-way seat adjustment includes seat heating for the driver and front passenger seats. | HL | EX |

03 "Climatronic" 3-zone air conditioning. This system offers 3-zone temperature control for the driver, front passenger and passengers in the passenger compartment. It recognises the intensity of the sun's rays and the outside temperature, and adds more or less cool air accordingly. The automatic air recirculation function with an air quality sensor creates a pleasant interior climate. | CL | HL | EX |

04 Sunblinds. Blinds in the passenger compartment shield passengers from bright sunlight and screen them from view. They can be pulled out easily from the housing at the bottom of the side windows and attached to the top. | CL | HL | EX |

05 Electric sliding doors. Both sliding doors can be opened and closed electronically, either using the switch in the centre console or using the remote control key. | CL | HL | EX |



06 Light & Sight package. Designed to improve visibility, this package consists of an automatically dimming rear view mirror, which protects against dazzling from traffic to the rear, and a rain sensor, which activates the windscreen wipers. The driving light assistant with "coming home/leaving home" function illuminates the area around the vehicle for improved safety and convenience. | CL | HL | EX |

07 Good Night Package. Stay overnight in the Multivan with the Good Night Package. The package is made up of a multiflex board bed extension, fabric blinds for the windows, a mini reading lamp, a washable bed cover, and three drawers underneath the 3-seater bench seat. Short wheelbase models only. Multiflex board replaces retractable luggage compartment cover. | CL | HL |

08 Insulating box. It is electrically operated, and can be used to cool and warm the contents. The 32L insulating box can hold 1.5L bottles lying down, and 1.0L bottles standing up. | CL | HL | EX |

09 Electric tailgate. It is easy to open and close from either the driver seat or with the remote control key. The tailgate can also be closed automatically by operating a button in the tailgate or by pulling briefly. | HL | EX |

10 Swivelling seats with integrated child booster seats. The individual seat with armrests can be changed quickly and easily from a full adult seat with a three-point safety belt into a robust child booster seat, and can be swivelled as required, all without you breaking a sweat. | CL | HL | EX |

11 Comfort headlining. Ventilation strips in the headlining supply fresh air to the passenger compartment, and help to reduce misting up of the side windows. The swivelling reading lamps can be adjusted individually. | CL | HL | EX |

First class infotainment.

01





02 "Composition Media" radio system. The system consists of a 16.5 cm (6.33 inch) TFT colour display, a touchscreen with proximity sensor, an MP3- and WMA-compatible CD drive, six loudspeakers, an SD-card slot, an AUX-IN interface and a USB port in the glove compartment, a Bluetooth® connection for mobile telephones, and a dual tuner with phase diversity for optimal radio reception. | CL |



03 "Discover Media" navigation system. In addition to the functions of the "Composition Media" radio system with six loudspeakers, there is a second integrated SD-card slot which is compatible with the SD-card with the map data. | CL | HL | EX |

01 App-Connect[^]. With this function, selected apps are mirrored from your smart phone to the touch screen of the radio or navigation system display via the USB port and controlled using the touchscreen. | CL | HL | EX |

Volkswagen Media Control (not illustrated). Turn your smartphone or tablet into a remote control for the navigation system, and control the audio system using a wireless connection from the comfort of the passenger compartment. Or mirror a navigation route from your tablet onto the colour touchscreen display. | CL | HL | EX |



04 Electronic voice amplification. This ensures that the driver does not have to speak loudly in order to talk to the passengers in the rear compartment. The voice input is recorded through a hands-free microphone, amplified, and then transmitted over the loudspeakers in the rear. | CL | HL | EX |



05 Voice control. You are free to operate the telephone, navigation, and audio functions without taking your hands off the steering wheel. Furthermore, you can call up virtually all menus and notifications on the radio or navigation system displays using voice control. | CL | HL | EX |

[^]App-Connect is compatible for selected apps with the latest smartphone versions of iOS and Android.

Safety systems that are prepared for almost anything

A high level of protection during every journey.

Safety systems support the driver, helping to improve the safety and comfort of all vehicle occupants and other road users. Where necessary, the systems intervene in the driving process, and thereby help to reduce the risk of accidents on the road.



Airbags. Provide the best possible protection in the event of head-on and side impacts as standard. Additional head airbags provide added protection for those in the passenger compartment of short wheelbase versions.



Driver Fatigue Detection*. Uses visual and acoustic warning signals to recommend that the driver takes a break as soon as it registers driving behaviour that indicates tiredness.



Anti-Lock Braking System (ABS). Prevents wheel lock and, thus, maintains manoeuvrability.



Brake Assist System. Registers the speed at which the brake pedal is pressed. During a reflexive or emergency braking action, it ensures that full brake pressure is built up more quickly.



Electronic Stabilisation Programme. Prevent under- or over-steering via targeted braking of individual wheels.



Traction Control System (TCS). Prevents wheelspin



Electronic Differential Lock (EDL). Distributes the engine torque to the tyres without slippage.



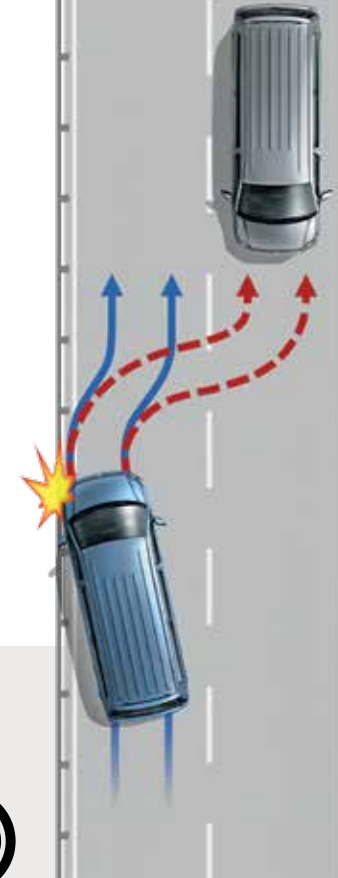
Hill Start Assist. Prevents the vehicle from rolling back on inclines and makes handling easier when starting up on uphill slopes.



Daytime Running Lights. Switch on automatically when the ignition is activated and lower the risk of an accident in daylight.



Cruise Control. As of a speed of 30 km/h, it maintains the set speed depending on uphill and downhill inclines.



Multi-Collision Braking System. Triggers braking after a collision, with the aim of preventing secondary collisions.

The Multi-collision Braking System activates when two independent sensors detect an accident. After a short delay, the vehicle begins a phased braking action down to 10 km/h, during which the driver can take over at any time.



Adaptive Cruise Control* (ACC).

Automatically adapts the speed to that of the vehicle driving in front and maintains the distance set by the driver. At the same time, it remains within the set speed. | HL | EX |

“Front Assist” ambient traffic monitoring system with City Emergency Braking*.

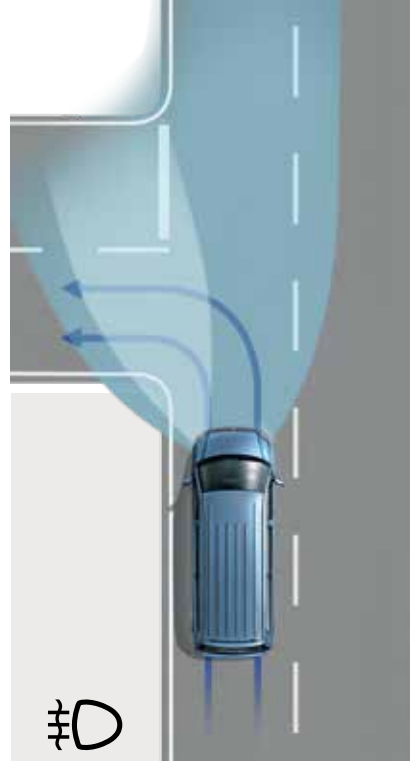
Uses a radar system to detect situations where the distance to the vehicle in front is critical, and reduces the vehicle’s stopping distance. In dangerous situations, the system alerts the driver by means of visual and acoustic signals, and with a warning jolt of the brakes. | HL | EX |



Side Assist*.

Displays a warning signal in the door mirror if one of the system’s sensors registers a vehicle in the blind spot when changing lanes. | CL | HL |

Short wheelbase models only.



Fog lights with integrated static cornering light.

Ensures optimal visibility in poor weather conditions. The headlight nearest to the corner illuminates the roadside when turning. | CL | HL | EX |



Rear View Camera*. Simplifies parking by showing a limited view of the area behind the vehicle on the display of the radio or navigation system. Additional static guidelines facilitate the parking process (Discover Media shown). | CL | HL | EX |



Front and Rear Park Distance Control*. Emits audible warnings when obstacles are detected in front of or behind the vehicle when parking, and also provides a visual display of the vehicle’s distance from the obstacles (Discover Media shown). | CL | HL | EX |

*Safety technologies are not a substitute for the driver's responsibility of the vehicle.

Standard equipment

Optional extra | CL | Comfortline | HL | Highline | EX | Executive

Low fuel consumption with even more power.

The Multivan achieves impressive fuel consumption thanks to the BlueMotion Technology efficiency package.

The all-new TDI450 engine sets the standard for power and torque, for an enhanced driving experience.

2.0L TDI340 (103kW, 340Nm)

Average fuel consumption from 7.7L/100km*

2.0L TDI450 (150kW, 450Nm)

Average fuel consumption from 6.5L/100km*



*Fuel consumption figures according to ADR 81/02 derived from laboratory testing. Factors including but not limited to driving style, road and traffic conditions, environmental influences, vehicle condition and accessories fitted, will in practice in the real world lead to figures which generally differ from those advertised. Advertised figures are meant for comparison amongst vehicles only.



Standard technology that helps to save more fuel.

Regenerative braking. This recharges the vehicle battery during overrun and braking phases, thereby relieving strain on the engine and reducing fuel consumption.

Start/stop system. The system helps you to drive economically and switches off the engine when you come to a stop. This can reduce fuel consumption especially in urban traffic or stop and go situations.

DCC adaptive chassis control. The optional DCC adaptive chassis control improves vehicle handling and can be adjusted to your favourite setting at the touch of a button, simply choose from NORMAL, SPORT or COMFORT. Available for Highline models only.

Dual clutch DSG gearbox. The standard 7-speed dual clutch DSG gearbox permits fully automatic gear changing with no interruption in power flow, which results in significantly increased driving comfort. The driver can choose between normal and sport mode.



More off-road ready than any other.



With the 4MOTION Multivan Highline, drivers have the ideal driving companion to master the most challenging routes with ease, even when venturing off normal paved roads. The permanent all-wheel drive distributes the torque between the front and rear axle to all four wheels as needed. The result: perfect hold on the road, no matter what the surface.

The new generation 4MOTION all-wheel drive. 4MOTION vehicles are equipped with the latest generation all wheel drive coupling. Advantages include reduced weight, and further enhancement of vehicle handling and dynamics.

Hill Descent Assist. This optional system allows you to drive down slopes in a safe, controlled way, thanks to the engine management's ability to govern the engine speed and apply the brakes if necessary.

Mechanical Differential Lock. This optional system is available for the rear axle together in conjunction with the 4MOTION all-wheel drive. This makes starting up in adverse conditions, such as driving off-road, much easier.



Overseas model shown.

Technical Specifications

Engine	2.0 litre TDI340 BlueMotion Technology	2.0 litre TDI450 BlueMotion Technology
Type	4 cylinder inline turbocharged direct injection diesel with engine Start/Stop system [^]	4 cylinder inline turbocharged direct injection diesel with engine Start/Stop system [^]
Max power, kW @ rpm	103 @ 3,500	150 @ 4,000
Max torque, Nm @ rpm	340 @ 1,750-2,500	450 @ 1,400-2,400
Cubic capacity (litres/CC)	1,968	1,968
Fuel type (recommended)	Diesel DIN EN 590	Diesel DIN EN 590

	Comfortline (Short Wheelbase)	Comfortline (Long Wheelbase)	Highline (Short Wheelbase)	Highline 4MOTION (Short Wheelbase)	Executive (Long Wheelbase)
Transmission	7 Speed Direct Shift Gearbox (DSG) with sport model and Tiptronic function. Includes coasting feature.				
Driven wheels	Front Wheel Drive	Front Wheel Drive	Front Wheel Drive	All Wheel Drive	Front Wheel Drive
Fuel Consumption **					
Combined, L/100km	7.7	7.7	6.5	6.8	6.5
Fuel tank capacity (L)	80	80	80	80	80
Weights					
Gross Vehicle Weight (GVM, kg)	3,000	3,080	3,080	3,080	3,080
Unladen Mass ¹ (kg)	2,191	2,254	2,302	2,412	2,331
Roof Load (kg)	100	100	100	100	100
Interior					
Seating capacity	7 (2 + 2 + 3)	7 (2 + 2 + 3)	7 (2 + 2 + 3)	7 (2 + 2 + 3)	7 (2 + 2 + 3)
Load Compartment Length (mm) - without rear seats	2,532	2,932	2,532	2,532	2,932
Load Compartment Width (mm) - maximum	1,627	1,627	1,691	1,691	1,627
Load Compartment Width (mm) - at wheel arches	1,220	1,220	1,220	1,220	1,220
Load Compartment Height (mm)	1,320	1,332	1,320	1,320	1,332
Sliding Door Width (mm)	1,011	1,011	1,011	1,011	1,011
Sliding Door Height (mm)	1,247	1,247	1,247	1,247	1,247
Tailgate Width (mm)	1,438	1,438	1,438	1,438	1,438
Tailgate Height (mm)	1,262	1,262	1,262	1,262	1,262
Load Sill Height (mm)	571	574	551	551	574
Towing Capacity (kg)					
Braked [‡]	2,500	2,500	2,500	2,500	2,500
Unbraked	750	750	750	750	750
Towbar Load Limit (kg)	100	100	100	100	100

Full vehicle specifications are available at www.volkswagen.com.au

[^]The Start/Stop system is designed to reduce fuel consumption and CO2 emissions. It achieves this by automatically switching off the engine while the vehicle is stationary and then starting it again automatically when the driver wants to drive off. There are certain operating conditions where the Start/Stop system is deactivated (e.g. during engine warm-up), please refer to the owner's manual for full operating information.

**Fuel consumption figures according to ADR 81/02 derived from laboratory testing. Factors including but not limited to driving style, road and traffic conditions, environmental influences, vehicle condition and accessories fitted, will in practice in the real world lead to figures which generally differ from those advertised. Advertised figures are meant for comparison amongst vehicles only.

1. The Unladen Mass (UM) includes 10L of fuel, vehicle fluids and no occupants. Figures quoted are for base model vehicles only.

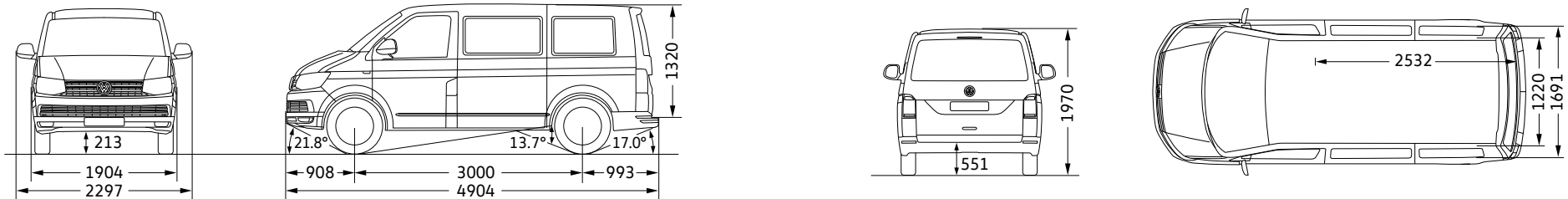
‡ Please note, Volkswagen Group Australia does not endorse or will not be held liable for any claim, loss or damage arising from the use or fitment of electronic trailer brakes.

Dimensions

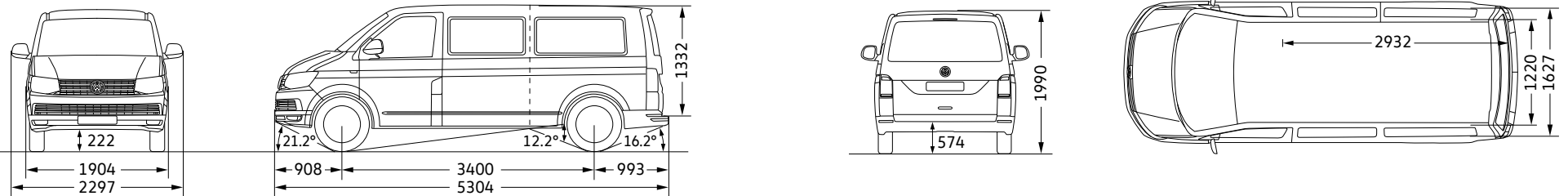
Multivan Comfortline (Short Wheelbase)



Multivan Highline



Multivan Comfortline and Executive (Long Wheelbase)



Wheels

16" alloy wheel - CLAYTON

Standard for Comfortline short wheelbase



17" alloy wheel - DEVONPORT

Standard for Comfortline (Long Wheelbase), Highline and Executive. Optionally for Comfortline Short Wheelbase.



18" alloy wheel - SPRINGFIELD

Optional for Highline and Executive



Volkswagen Accessories.

The Multivan is a highly versatile vehicle that leaves nothing to be desired. If you would like to have a few extras, Volkswagen Accessories offers interesting additional equipment options. These have been developed in cooperation with our Development and Design department, provide top quality, and are only available at your Volkswagen dealer. So everything fits nicely together.

- 01** 18" alloy wheel - DAKAR.
- 02** Slimline Weather Shields.
- 03** Roof Bars with Roof Box.
- 04** Luggage Compartment Protection.
- 05** Loading Sill Protection with Tailgate Protective Strip.
- 06** Towbar.



Colour & Trim

Solid paint finishes



Candy White | Solid paint finish | B4B4



Cherry Red | Solid paint finish | 4B4B

Metallic and Pearlescent paint finishes



Reflex Silver | Metallic paint finish | 8E8E



Indium Grey | Metallic paint finish | X3X3



Starlight Blue | Metallic paint finish | 3S3S



Acapulco Blue | Metallic paint finish | 2W2W



Bamboo Green | Metallic paint finish | 3T3T



Mojave Beige | Metallic paint finish | 1B1B



Chestnut Brown | Metallic paint finish | H4H4

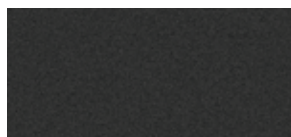


Oryx White Pearl | Pearl effect paint finish | 0R0R



Deep Black | Pearl effect paint finish | 2T2T

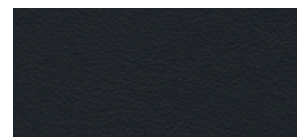
Seat upholstery



Pandu | Cloth seat upholstery
Titanium Black | CL |



Alcantara® leather appointed seat upholstery~
Titanium Black | CL |



"Nappa" leather appointed seat upholstery~
Titanium Black | HL | EX |



"Nappa" leather appointed seat upholstery~
Desert Beige | HL | EX |



"Nappa" leather appointed seat upholstery~
Moon Rock Grey | HL | EX |

Please note that Metallic and Pearl Effect paint are optional at extra cost. The print process does not allow for exact reproduction of the exterior or the upholstery colours. ~Leather appointed seats have a combination of genuine and artificial leather, but are not wholly leather. Please contact your Volkswagen Dealer for further information on colours and upholstery combinations.

Volkswagen Choice: Protecting your investment.

Volkswagen Choice

Guaranteed Future Value

We're out to prove that there still are some guarantees in life. We've developed Volkswagen Choice[^] - a flexible finance solution that provides you with the assurance of knowing exactly what the minimum value of your vehicle will be down the track. With Volkswagen Choice[^], you can enjoy your car without worrying about what the future will bring, providing peace of mind.

At the end of your term,
you can simply choose to:



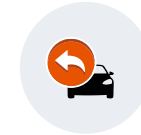
Trade-in

Your existing vehicle and purchase a new Volkswagen under the Volkswagen Choice Program



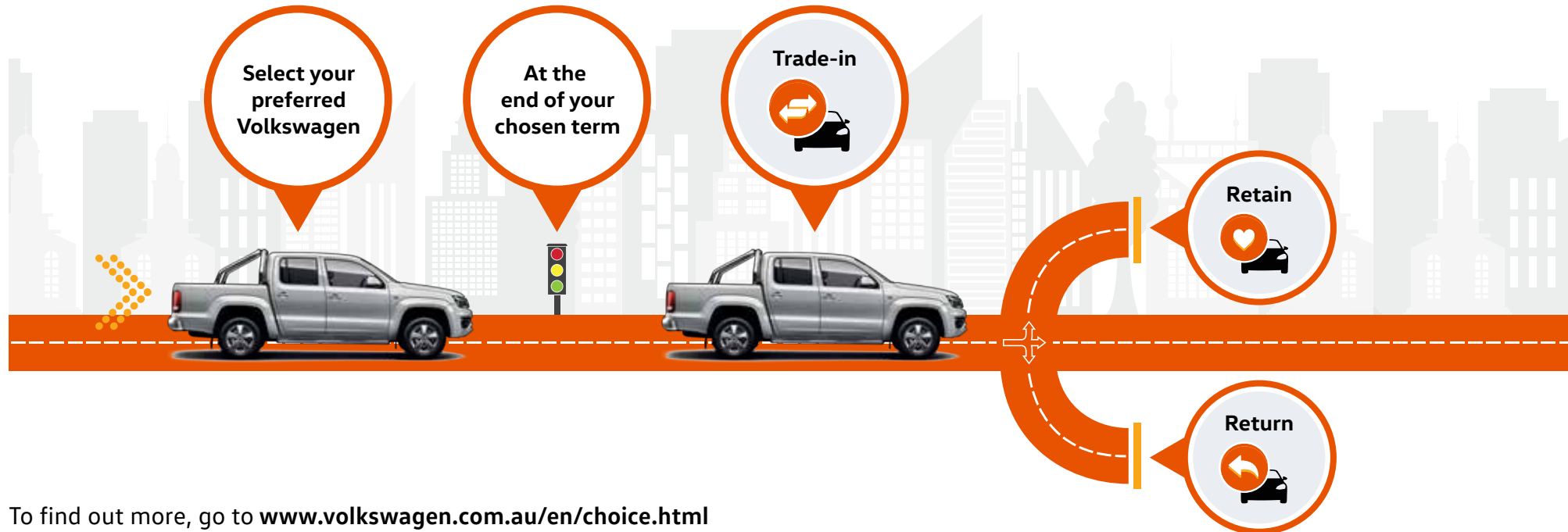
Retain

Make an offer to purchase/ refinance the vehicle



Return

Hand the vehicle back and receive the Guaranteed Future Value[#]



To find out more, go to www.volkswagen.com.au/en/choice.html

[^]The Volkswagen Choice Program consists of an option to require Volkswagen Financial Services to purchase your vehicle at the end of your Volkswagen Financial Services Chattel Mortgage or Consumer Loan for a value (known as the Guaranteed Future Value) determined by Volkswagen Financial Services and set out in your contract. [#]The Guaranteed Future Value is not a representation by Volkswagen Financial Services as to the likely market value of your vehicle as at the end of your contract. The option is available on new and demonstrator Volkswagen vehicles for selected models only. Please verify with your dealership vehicles that are eligible for the program. If vehicles are not returned in an acceptable condition, as defined in the terms and conditions or exceed kilometre restrictions the Guaranteed Future Value will be reduced. See the Volkswagen Choice Fair Wear and Tear Guide for more information on the required conditions and circumstances. The cost of the Volkswagen Choice Program is incorporated into the applicable interest rate. Please read the full terms and conditions. Please consider whether these products and services are appropriate for your circumstances. Before acting on any of the information on this page, please seek independent financial and tax advice. Full terms and conditions are available upon application. Available only to approved applicants of Volkswagen Financial Services. Subject to credit assessment. Fees and charges apply. Fleet, government, rental buyers, hire car and chauffeur companies are excluded. Available at participating Volkswagen dealers. Volkswagen Financial Services is a trading name of Volkswagen Financial Services Australia Pty Limited ABN 20 097 071 460. Australian Credit Licence 389344

General information

Owning a Volkswagen

Volkswagen New Vehicle Warranty

Every new Volkswagen vehicle is covered by a three year unlimited kilometre manufacturer's warranty, which includes Volkswagen Assist (24-hour roadside assistance). Every new Volkswagen vehicle is also covered by a 3 year paintwork and 12-year anticorrosion perforation warranty. For further information regarding this New Vehicle Warranty, including pricing and terms and conditions, please consult your local Volkswagen dealer or visit www.volkswagen.com.au. Your rights under this warranty sit alongside the consumer guarantees under the Competition and Consumer Act 2010 which cannot be excluded.

Volkswagen Assist – 24-Hour Roadside Assistance

As a valued customer, you can be assured that wherever you travel within Australia, you will have access to roadside assistance, 24 hours a day, 365 days a year. This is complimentary for the duration of the vehicle's original Volkswagen warranty period. You will receive help in the event of a breakdown or accident and, if required, your vehicle will be mobilised or transported to an Authorised Volkswagen Workshop. As a Volkswagen owner you will also have access to the additional benefits of accommodation and car rental if your vehicle cannot be mobilised within 24 hours, when you are over 100km away from home.

Volkswagen Genuine Parts®

Volkswagen Genuine Parts® are designed for your vehicle and approved by Volkswagen, with particular regard to safety. The workmanship, dimensional accuracy and materials used in these parts comply with factory specifications. To ensure safety and reliability, Volkswagen recommends the use of Volkswagen Genuine Parts®. Your authorised Volkswagen Dealers offers a two-year unlimited kilometre warranty on Genuine Parts from the date of purchase (exclusions apply), visit www.volkswagen.com.au.

Volkswagen Financial Services

Buying, borrowing or leasing, Volkswagen Financial Services will certainly make you think differently about financing and insuring your new Volkswagen. Committed to meeting the needs of Volkswagen drivers across Australia, we offer a range of leasing, financing and insurance products, each with distinct advantages depending on your specific circumstances. We can tailor a solution to suit your individual requirements, so you can rest assured that there will be no surprises along the way. Speak to your local participating authorised Volkswagen Dealer today to put together a solution that best suits your lifestyle.

Volkswagen Choice Guaranteed Future Value[^]

Volkswagen Choice is a finance program available to approved applicants of Volkswagen Financial Services only, which provides Volkswagen owners protection around your Volkswagen's future value[#], whilst offering a simple monthly instalment financing option. Enjoy the peace of mind of knowing the minimum value you can receive for your vehicle at the end of your contracted term. You can choose to either trade-in, return or retain your Volkswagen – it's your choice. Learn more about how to protect your investment by visiting www.volkswagen.com.au/en/choice.html today.

Volkswagen Assured Service

What you can expect as standard when servicing through our authorised Volkswagen dealer network is an expert team, trained by Volkswagen utilising specialist Volkswagen diagnostic equipment ensuring they're able to cater for all of your Volkswagen's servicing and repair needs. They also have access to the full Volkswagen Genuine Parts catalogue making sure any part replaced during a service or repair is replaced with a Volkswagen Genuine Part. What's more, your Volkswagen will be returned in immaculate condition, cleaned and vacuumed. Add these together and you can rest assured there's no better place to keep your Volkswagen running like a Volkswagen.

[^]The Volkswagen Choice Program consists of an option to require Volkswagen Financial Services to purchase your vehicle at the end of your Volkswagen Financial Services Chattel Mortgage, Consumer Loan or Hire Purchase for a value (known as the Guaranteed Future Value) determined by Volkswagen Financial Services and set out in your contract. The Guaranteed Future Value is not a representation by Volkswagen Financial Services as to the likely market value of your vehicle as at the end of your contract. The option is available on new and demonstrator Volkswagen vehicles for selected models only. Please verify with your dealership vehicles that are eligible for the program. [#]If vehicles are not returned in an acceptable condition, as defined in the terms and conditions or exceed kilometre restrictions the Guaranteed Future Value will be reduced. See the Volkswagen Choice Fair Wear and Tear Guide for more information on the required conditions and circumstances. The cost of the Volkswagen Choice Program is incorporated into the applicable interest rate. Please read the full terms and conditions. Please consider whether these products and services are appropriate for your circumstances. Before acting on any of the information on this page, please seek independent financial and tax advice. Full terms and conditions are available upon application. Available only to approved applicants of Volkswagen Financial Services. Subject to credit assessment. Fees and charges apply. Fleet, government, rental buyers, hire car and chauffeur companies are excluded. Available at participating Volkswagen dealers. Volkswagen Financial Services is a trading name of Volkswagen Financial Services Australia Pty Limited ABN 20 097 071 460. Australian Credit Licence 389344.

The Multivan

Volkswagen Group Australia Pty Ltd
24 Muir Road Chullora NSW 2190
ABN 14 093 117 876

Printed in Australia
August 2017
www.volkswagen.com.au

Publication: VWCMULTIBROMY18

Important information

Apple CarPlay® is a registered trademark of Apple Inc. Android Auto™ is a registered trademark of Google Inc. MirrorLink® is a registered trademark of Car Connectivity Consortium LLC. Bluetooth® is a registered trademark of Bluetooth SIG Inc. Alcantara® is a registered trademark of Alcantara S.p.A.

Volkswagen is distributed by Volkswagen Group Australia Pty Ltd, 24 Muir Road, Chullora, NSW 2190, ABN 14 093 117 876. Specifications are as planned at August 2017, for Model Year 18 and are subject to change without notice or obligation. All information in this brochure is correct at the time of publication, however variations may occur from time to time and Volkswagen, in so far as it is permitted by law to do so, shall not be liable in any way as a result of any reliance by any person on anything contained in this brochure. Authorised Volkswagen dealers will provide up-to-date information on model application, design feature, prices and availability on request. All colours are a general guide only, as the printing process cannot reproduce the actual exterior colour appearance. See your dealer to confirm colour/model availability.

Your Volkswagen dealer.



Volkswagen

The Multivan

Specifications



Features and Specifications

Safety and security	Comfortline (Short and Long Wheelbase)	Highline (Short Wheelbase)	Executive (Long Wheelbase)
Airbags			
Front airbag for driver and front passenger	●	●	●
Side/head airbags for driver and front passenger	●	●	●
Curtain airbags for outer seats in 2nd and 3rd rows	Short Wheelbase only	●	—
Seat belts			
3-point seat belts with height adjustment and belt tensioners for driver and front passenger	●	●	●
3-point seat belts for all rear seats	●	●	●
Seat belt warning light and buzzer for driver's seat	●	●	●
Child Restraints			
Child seat top tether anchorage points (for 2nd row Captain's chairs and all seats in 3rd row)	●	●	●
ISOFIX child seat anchorage points (for 2nd row Captain's chairs and outer seats in 3rd row)	●	●	●
Brakes and Traction Control			
Multi-Collision Brake (MCB)	●	●	●
Electronic Stabilisation Programme (ESP)	●	●	●
Anti-lock Braking System (ABS)	●	●	●
Brake Assist System (BA)	●	●	●
Traction Control System (TCS)	●	●	●
Electronic Differential Lock (EDL)	●	●	●
Hill Hold Control	●	●	●
Mechanical rear differential lock	—	Option for 4Motion	—
Hill Descent Control	—	Option for 4Motion	—
Driver Assistance Technology*			
Driver Alert (Fatigue Detection System)	●	●	●
Front and rear park distance control with rear view camera system	●	●	●
Lane Change Assist "Side Assist" (blind spot monitoring)	Option for SWB only	●	—
Forward Collision Warning "Front Assist" with City Emergency Braking (City EB)	—	●	●
Lighting			
Dual halogen headlights (H7)	●	—	—
Daytime running lights (DRL)	●	—	—
LED headlamps with separate LED daytime running lights and LED tail lights	—	●	●
Front fog lights with static cornering function	○	●	●

*Safety technologies are not a substitute for the driver's responsibility of the vehicle.

Safety and security

Comfortline

Highline

Executive

Lighting continued

Automatic headlight activation with separate daytime running lights, "Leaving Home" and manual "Coming Home" function

●

●

●

Headlight range adjustment (manual)

●

—

—

Headlight range adjustment (automatic)

—

●

●

High stop light

●

●

●

Rear fog light

●

●

●

Locking

Engine immobiliser (electronic)

●

●

●

Central locking system with radio remote control and interior release mechanism

●

●

●

SAFELOCK deadlock function

—

●

●

Anti-theft alarm with interior monitoring, backup horn, and towing protection

—

●

●

Two (2) remote control folding keys and one (1) rigid key

●

●

●

Child safety locks on rear sliding doors

●

●

●

Head Restraints

Front safety head restraints, height adjustable

●

●

●

Rear head restraints, height adjustable for all seating positions

●

●

●

Exterior Equipment / Styling

Doors

Electric sliding side doors

●

●

●

Power latching tailgate with window and wiper/washer

●

—

—

Electric opening and closing rear tailgate with window and wiper/washer

—

●

●

Windows

Heat-insulating windshield made of laminated glass

●

●

●

Heat-insulating glass (green)

●

—

—

Rear privacy glass

—

●

●

Side windows (opening) in sliding doors

●

●

●

Side windows (fixed) in rear of passenger compartment

●

●

●

Windscreen wiper intermittent control and rain sensor

●

●

●

Heated rear window with wiper/washer system

●

●

●

Power windows with comfort operation and circuit breaker (front)

●

●

●

Exterior Equipment / Styling

Comfortline

Highline

Executive

Body Enhancements

Body coloured bumpers	●	●	●
Body coloured door handles and sliding door covers	●	●	●
Body coloured exterior mirror housings	●	—	●
Body coloured exterior mirror housings with high-gloss black base	—	●	—
High-gloss black radiator grille with 3 decorative chrome strips	●	—	—
High-gloss black radiator grille with 3 decorative chrome strips and additional chrome strip on lower grille	—	●	●
Chrome base on side turn signals	●	—	—
Chrome on vehicle side, tailgate, lower air intake and side turn signals	—	●	●
Stainless steel protection strip for tailgate opening	—	●	—
Sliding / pop-up sunroof in cab (operated electrically) with sunblind	—	○	○
Roof rack preparation rails	●	●	●
Front and rear mud guards	●	●	●
Trailer hitch preparation	●	●	●

Wheels and Tyres

4 x 16" alloy wheels - CLAYTON - 215/65 R16 C106/104T tyres	Standard for SWB	—	—
4 x 17" alloy wheels - DEVONPORT - 235/55 R17 103H rf tyres	Standard for LWB	●	●
4 x 18" alloy wheels - SPRINGFIELD - 255/45 R18 103H xl tyres - Full size spare wheel and jack replaced with tyre repair kit	—	○	○
Steel spare wheel - full size, OE tyre	SWB only	—	—
Alloy spare wheel - full size, OE tyre	—	●	—
Tyre repair kit	—	—	●
Tool kit with vehicle jack	●	●	●

Comfort & Convenience

Comfortline

Highline

Executive

Air Conditioning

Climatronic air conditioning system, with dual front temperature control and rear controls

●

●

●

Air recirculation vents in headliner for rear passenger compartment

●

●

●

Fresh air intake system with activated charcoal canister

●

●

●

Cruise Control

Cruise Control

●

●

●

Adaptive Cruise Control (ACC)*

—

●

●

Luggage Area

Lashing rings for load restraint

●

●

●

Luggage compartment cover (retractable, removable)

SWB only

●

—

In-Car Entertainment and Technology

Composition Media audio system

6.33" colour touch screen display with proximity sensor, AM/FM radio, CD player (MP3/WMA compatible), SD card slot, external AUX and USB inputs, and six (6) speakers. Car menu with convenience and service settings. Includes display for park distance control. App-Connect ~ USB interface for Apple CarPlay®, Android Auto™ and MirrorLink® in front centre console.

●

—

—

Discover Media audio and satellite navigation system

6.33" colour touch screen display with proximity sensor, AM/FM radio, CD player (MP3/WMA compatible), 2 x SD card slots for music and navigation data, external AUX and USB inputs, and six (6) speakers. 2D and 3D (bird's eye) map views. Car menu with convenience and service settings. Includes display for park distance control. App-Connect~ USB interface for Apple CarPlay®, Android Auto™ and MirrorLink® in front centre console. Volkswagen Media Control.

○

●

●

Voice Control (available with Digital Voice Enhancer only)

○

●

●

Digital Voice Enhancer (Available with Voice Control only)

○

●

●

Bluetooth® phone connectivity with contacts display and Bluetooth® audio streaming, operation via touch screen audio unit or Multi-Function Display

●

●

●

Audio, telephone, cruise control and Multi-Function Display controls mounted on steering wheel

●

●

●

12 volt socket in storage box beside gear lever, passenger compartment and luggage area

●

●

●

Instrumentation

Speedometer & tachometer, electronic odometer and trip meter, service interval display, fuel and coolant gauges, low fuel warning light, adjustable illumination

●

●

●

Multi-Function Display (MFD Plus) - trip time, trip length, average and current speed, average and current fuel consumption, display until empty and ambient temperature, digital clock, vehicle status, audio, telephone and navigation (if fitted) menus

●

—

—

Premium Multi-Function Display (MFD Premium) with TFT colour screen - trip time, trip length, average and current speed, average and current fuel consumption, display until empty and ambient temperature, digital clock, vehicle status, audio, telephone and navigation menus

—

●

●

*Safety technologies are not a substitute for the driver's responsibility for the vehicle.

~App-Connect is compatible for selected apps with the latest smartphone versions of iOS and Android.

Comfort & Convenience

	Comfortline	Highline	Executive
Interior Lighting			
Reading lights, front	●	●	●
Convenience lighting in rear	●	●	●
Roof lights in passenger compartment	●	●	●
Step lighting at doors in cab and sliding doors in passenger compartment	●	●	●
Interior Trims			
Decorative inserts, "Dark Silver Brushed" and "Paviano Black"	●	—	—
Decorative inserts, "Structural X" and "Black Glossy"	—	●	—
Decorative inserts, "Linearus" and "Paviano Black"	—	—	●
"MULTIVAN" nameplate on front and rear step inserts	●	—	●
"HIGHLINE" nameplate on front and rear step inserts	—	●	—
Leather-wrapped gearshift knob	●	●	●
Sunshades for side windows in passenger compartment	●	●	●
Moulded headlining in passenger area	●	●	●
Carpet floor covering in cab and passenger compartment	●	●	●
Floor mats in cab (cut pile)	●	●	●
Chrome accents on air vents	●	●	●
Mirrors			
Exterior mirrors (left: convex, right: aspherical)	●	●	●
Exterior mirrors, power adjustable and heated	●	—	—
Exterior mirrors, power adjustable, power folding and heated	—	●	●
Auto dimming breakaway interior rear view mirror	●	●	●
Power Steering			
Rack and pinion power steering	●	—	—
Servotronic (speed-sensitive power steering)	—	●	●
Seating			
Height adjustment for driver's and front passenger's seat	●	—	—
Lumbar support (manually adjustable) for both front seats	●	—	—
Front seats with 12-way power adjustment (slide, seat cushion angle, seat height, recline and 4-way lumbar functions), driver's seat with memory function (3 settings)	—	●	●
Front seat heaters, left and right, separately controllable	○	●	●
Front seat armrests	●	●	●

● Standard ○ Optional Extra — Not available

Comfort & Convenience

	Comfortline	Highline	Executive
Rear seat rail system, allowing longitudinal adjustment	●	●	●
2 x Captain's seats with swivel function and armrests, in 2nd row	●	●	●
3-seater bench with reclining seat mechanism and storage compartment, movable, in 3rd row	●	●	●
Centre armrest for 3-seater bench seat	—	●	●
Child booster seats in 2nd row swivel chairs	○	○	○
Cloth seat covering "Pandu"	●	—	—
Nappa leather appointed seat upholstery*	—	●	●
Overhead grab handles for driver and front passenger	●	●	●
Overhead grab handles for rear seat passengers	●	●	●
A-pillar grab handles for driver and front passenger	●	●	●
B-pillar grab handles for rear seat passengers	●	●	●
Steering Wheel			
3 spoke leather steering wheel	●	●	●
Audio, telephone, cruise control and Multi-Function Display controls mounted on steering wheel	●	●	●
Steering wheel height and tilt adjustment	●	●	●
Storage			
Multi-function table mounted on rail system (includes drink holder, magazine pocket and drawer)	○	●	●
Cooling/warming box (32L capacity)	○	○	○
Front door pockets	●	●	●
Glove compartment with lockable lid	●	●	●
Upper glove compartment with lid	●	●	●
Dash-mounted cup holder (2) with additional storage	●	●	●
Dash-mounted bottle holder	●	●	●
Storage box beside gear lever, with 12 volt socket	●	●	●
Upper storage tray with lid	●	●	●
Storage compartments on side of front seats	●	●	●
Coat hooks throughout passenger area	●	●	●
Front sunvisors with ticket holder and illuminated vanity mirror	●	●	●
Waste bins in the door pockets	●	●	●

Body Builder Items

Electrical interface (terminal block under driver's seat)	○	○	○
---	---	---	---

*Leather appointed seats have a combination of genuine and artificial leather, but are not wholly leather.

Optional Packages

Comfortline

Highline

Executive

Goodnight Package

Multi-flex board bed extension (replaces retractable luggage compartment cover)

Fabric blinds for windows

Reading lamp

Washable bed cover

Three (3) drawers underneath 3-seater bench

Option for SWB only

○

—

*Leather appointed seats have a combination of genuine and artificial leather, but are not wholly leather.

● Standard ○ Optional Extra — Not available

Technical Specification

Engine	2.0 litre TDI340 BlueMotion Technology		2.0 litre TDI450 BlueMotion Technology		
Type	4 cylinder inline turbocharged direct injection diesel with engine Start/Stop system [^]		4 cylinder inline turbocharged direct injection diesel with engine Start/Stop system [^]		
Max power, kW @ rpm	103 @ 3,500		150 @ 4,000		
Max torque, Nm @ rpm	340 @ 1,750-2,500		450 @ 1,400-2,400		
Cubic capacity, litres/cc	1,968		1,968		
Bore/stroke, mm	81.0 x 95.5		81.0 x 95.5		
Compression ratio	16.5:1		15.5:1		
Fuel type (recommended)	Diesel DIN EN 590		Diesel DIN EN 590		
	Comfortline (Short Wheelbase)	Comforline (Long Wheelbase)	Highline (Short Wheelbase)	Highline 4MOTION (Short Wheelbase)	Executive (Long Wheelbase)
Transmission	7 Speed Direct Shift Gearbox (DSG) with sport mode and Tiptronic function) includes coasting feature.				
Driven wheels	Front Wheel Drive	Front Wheel Drive	Front Wheel Drive	All Wheel Drive	Front Wheel Drive
Fuel Consumption **					
Combined, L/100km	7.7	7.7	6.5	6.8	6.5
Urban, L/100km	9.5	9.5	7.5	7.7	7.5
Extra Urban, L/100km	6.7	6.7	5.9	6.3	5.9
Fuel tank capacity, L	80	80	80	80	80
Running Gear					
Suspension					
Front Axle	Independent McPherson struts, sub-frame with coil springs and gas filled dampers				
Rear Axle	Semi-trailing independent rear axle with coil springs and anti-roll bar				
Adaptive Chassis Control with Normal / Sport / Comfort modes	—	—	○	○	—
Steering	Rack and pinion power steering		Servotronic (speed-sensitive power steering)		
Brake systems	Anti-lock Braking System (ABS) with Electronic Brake-pressure Distribution (EBD), Brake Assist and Electronic Stabilisation Program (ESP). Brake energy recuperation.				
Brakes	Power assisted Hydraulic				
Front	Ventilated disc 340mm				
Rear	Ventilated disc 294mm				

[^]The Start/Stop system is designed to reduce fuel consumption and CO2 emissions. It achieves this by automatically switching off the engine while the vehicle is stationary and then starting it again automatically when the driver wants to drive off. There are certain operating conditions where the Start/Stop system is deactivated (e.g. during engine warm-up), please refer to the owner's manual for full operating information.

**Fuel consumption figures according to ADR 81/02 derived from laboratory testing. Factors including but not limited to driving style, road and traffic conditions, environmental influences, vehicle condition and accessories fitted, will in practice in the real world lead to figures which generally differ from those advertised. Advertised figures are meant for comparison amongst vehicles only.

Weights and Capacity

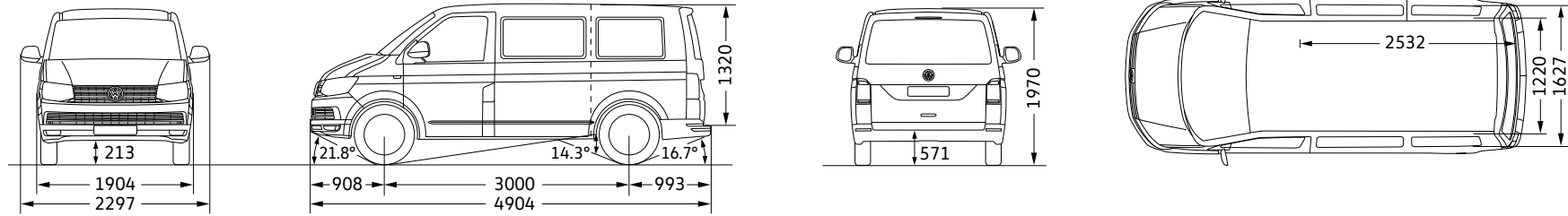
Weights	Comfortline (Short Wheelbase)	Comforline (Long Wheelbase)	Highline (Short Wheelbase)	Highline 4MOTION (Short Wheelbase)	Executive (Long Wheelbase)
Gross Vehicle Weight (GVM, kg)	3,000	3,080	3,080	3,080	3,080
Unladen Mass ¹ (kg)	2,191	2,254	2,302	2,412	2,331
Roof Load (kg)	100	100	100	100	100
Exterior Dimensions					
Wheelbase (mm)	3,000	3,400	3,000	3,000	3,400
Vehicle Length (mm)	4,904	5,304	4,904	4,904	5,304
Vehicle Width (mm) excluding mirrors	1,904	1,904	1,904	1,904	1,904
Vehicle Width (mm) including mirrors	2,297	2,297	2,297	2,297	2,297
Vehicle Height (mm)	1,970	1,990	1,970	1,970	1,990
Front Overhang (mm)	908	908	908	908	908
Rear Overhang (mm)	993	993	993	993	993
Ground Clearance (mm)	213	222	213	213	222
Slope Angle - Front (degrees)	21.8	21.2	21.8	21.8	21.2
Slope Angle - Rear (degrees)	16.7	16.2	17.0	17.0	16.2
Ramp Angle (degrees)	14.3	12.2	13.7	13.7	12.2
Turning Circle (m)	11.9	13.2	11.9	11.9	13.2
Interior					
Seating capacity	7 (2 + 2 + 3)	7 (2 + 2 + 3)	7 (2 + 2 + 3)	7 (2 + 2 + 3)	7 (2 + 2 + 3)
Load Compartment Length (mm) - without rear seats	2,532	2,932	2,532	2,532	2,932
Load Compartment Width (mm) - maximum	1,627	1,627	1,691	1,691	1,627
Load Compartment Width (mm) - at wheel arches	1,220	1,220	1,220	1,220	1,220
Load Compartment Height (mm)	1,320	1,332	1,320	1,320	1,332
Sliding Door Width (mm)	1,011	1,011	1,011	1,011	1,011
Sliding Door Height (mm)	1,247	1,247	1,247	1,247	1,247
Tailgate Width (mm)	1,438	1,438	1,438	1,438	1,438
Tailgate Height (mm)	1,262	1,262	1,262	1,262	1,262
Load Sill Height (mm)	571	574	551	551	574
Towing Capacity (kg)					
Braked [‡]	2,500	2,500	2,500	2,500	2,500
Unbraked	750	750	750	750	750
Towbar Load Limit (kg)	100	100	100	100	100

1. The Unladen Mass (UM) includes 10L of fuel, vehicle fluids and no occupants. Figures quoted are for base model vehicles only.

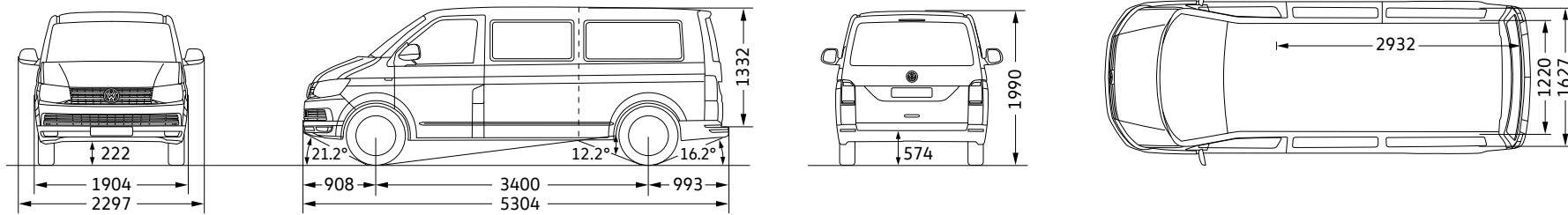
‡ Please note, Volkswagen Group Australia does not endorse or will not be held liable for any claim, loss or damage arising from the use or fitment of electronic trailer brakes.

Dimensions

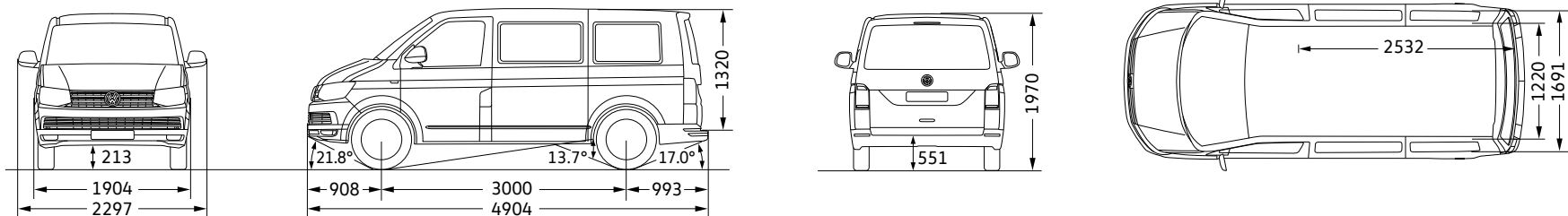
Multivan Comfortline



Multivan Comfortline LWB / Multivan Executive



Multivan Highline



Colour & Trim

Solid paint finishes



Candy White | Solid paint finish | B4B4



Cherry Red | Solid paint finish | 4B4B

Metallic and Pearlescent paint finishes



Reflex Silver | Metallic paint finish | 8E8E



Indium Grey | Metallic paint finish | X3X3



Starlight Blue | Metallic paint finish | 3S3S



Acapulco Blue | Metallic paint finish | 2W2W



Bamboo Green | Metallic paint finish | 3T3T



Mojave Beige | Metallic paint finish | 1B1B



Chestnut Brown | Metallic paint finish | H4H4

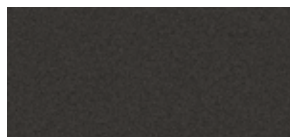


Oryx White Pearl | Pearl effect paint finish | 0R0R

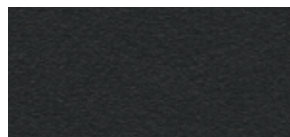


Deep Black | Pearl effect paint finish | 2T2T

Seat upholstery



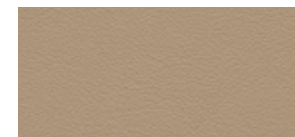
Pandu | Cloth seat upholstery | Titanium Black | CL



Alcantara® leather appointed seat upholstery | Titanium Black | CL



"Nappa" leather appointed seat upholstery | Titanium Black | HL | EX |



"Nappa" leather appointed seat upholstery | Desert Beige | HL | EX |



"Nappa" leather appointed seat upholstery | Moon Rock Grey | HL | EX |

Please note that Metallic and Pearl Effect paint are optional at extra cost. The print process does not allow for exact reproduction of the exterior or the upholstery colours. Please contact your Volkswagen Dealer for further information on colours and upholstery combinations. ~Leather appointed seats have a combination of genuine and artificial leather, but are not wholly leather.

Volkswagen Choice: Protecting your investment.

Volkswagen Choice

Guaranteed Future Value

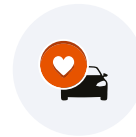
We're out to prove that there still are some guarantees in life. We've developed Volkswagen Choice[^] - a flexible finance solution that provides you with the assurance of knowing exactly what the minimum value of your vehicle will be down the track. With Volkswagen Choice[^], you can enjoy your car without worrying about what the future will bring, providing peace of mind.

At the end of your term,
you can simply choose to:



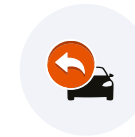
Trade-in

Your existing vehicle and purchase a new Volkswagen under the Volkswagen Choice Program



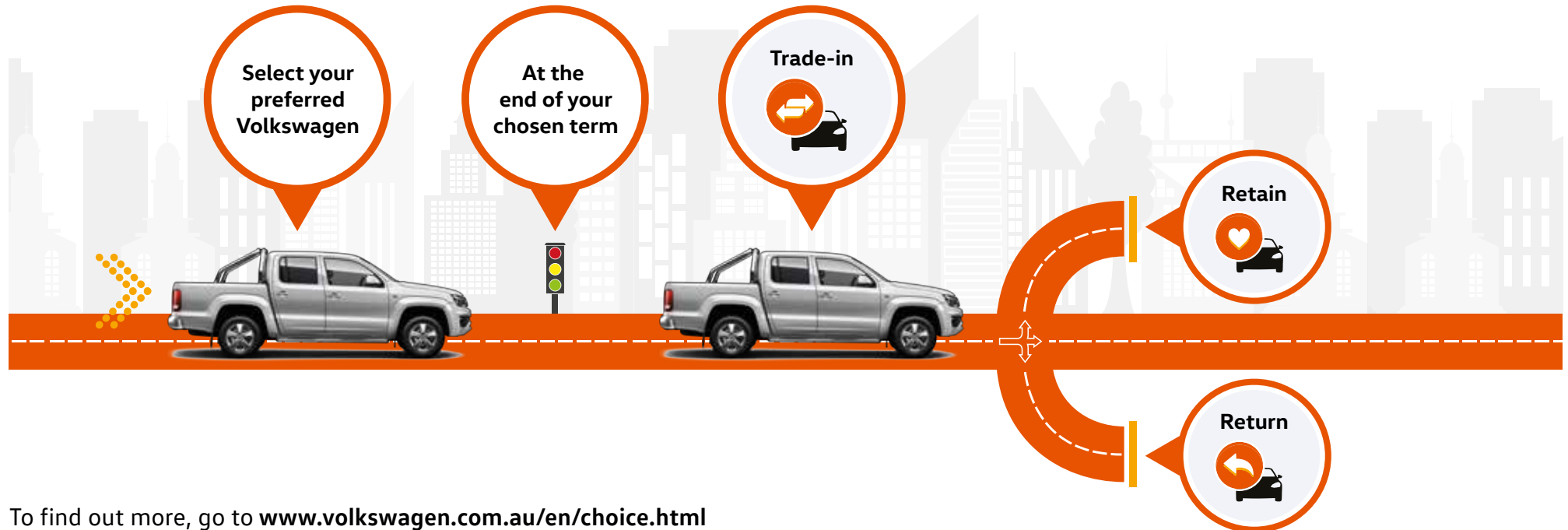
Retain

Make an offer to purchase/ refinance the vehicle



Return

Hand the vehicle back and receive the Guaranteed Future Value[#]



To find out more, go to www.volkswagen.com.au/en/choice.html

[^]The Volkswagen Choice Program consists of an option to require Volkswagen Financial Services to purchase your vehicle at the end of your Volkswagen Financial Services Chattel Mortgage or Consumer Loan for a value (known as the Guaranteed Future Value) determined by Volkswagen Financial Services and set out in your contract. [#]The Guaranteed Future Value is not a representation by Volkswagen Financial Services as to the likely market value of your vehicle as at the end of your contract. The option is available on new and demonstrator Volkswagen vehicles for selected models only. Please verify with your dealership vehicles that are eligible for the program. If vehicles are not returned in an acceptable condition, as defined in the terms and conditions or exceed kilometre restrictions the Guaranteed Future Value will be reduced. See the Volkswagen Choice Fair Wear and Tear Guide for more information on the required conditions and circumstances. The cost of the Volkswagen Choice Program is incorporated into the applicable interest rate. Please read the full terms and conditions. Please consider whether these products and services are appropriate for your circumstances. Before acting on any of the information on this page, please seek independent financial and tax advice. Full terms and conditions are available upon application. Available only to approved applicants of Volkswagen Financial Services. Subject to credit assessment. Fees and charges apply. Fleet, government, rental buyers, hire car and chauffeur companies are excluded. Available at participating Volkswagen dealers. Volkswagen Financial Services is a trading name of Volkswagen Financial Services Australia Pty Limited ABN 20 097 071 460. Australian Credit Licence 389344

General information

Owning a Volkswagen

Volkswagen New Vehicle Warranty

Every new Volkswagen vehicle is covered by a three year unlimited kilometre manufacturer's warranty, which includes Volkswagen Assist (24-hour roadside assistance). Every new Volkswagen vehicle is also covered by a 3 year paintwork and 12-year anticorrosion perforation warranty. For further information regarding this New Vehicle Warranty, including pricing and terms and conditions, please consult your local Volkswagen dealer or visit www.volkswagen.com.au. Your rights under this warranty sit alongside the consumer guarantees under the Competition and Consumer Act 2010 which cannot be excluded.

Volkswagen Assist – 24-Hour Roadside Assistance

As a valued customer, you can be assured that wherever you travel within Australia, you will have access to roadside assistance, 24 hours a day, 365 days a year. This is complimentary for the duration of the vehicle's original Volkswagen warranty period. You will receive help in the event of a breakdown or accident and, if required, your vehicle will be mobilised or transported to an Authorised Volkswagen Workshop. As a Volkswagen owner you will also have access to the additional benefits of accommodation and car rental if your vehicle cannot be mobilised within 24 hours, when you are over 100km away from home.

Volkswagen Genuine Parts®

Volkswagen Genuine Parts® are designed for your vehicle and approved by Volkswagen, with particular regard to safety. The workmanship, dimensional accuracy and materials used in these parts comply with factory specifications. To ensure safety and reliability, Volkswagen recommends the use of Volkswagen Genuine Parts®. Your authorised Volkswagen Dealers offers a two-year unlimited kilometre warranty on Genuine Parts from the date of purchase (exclusions apply), visit www.volkswagen.com.au.

Volkswagen Financial Services

Buying, borrowing or leasing, Volkswagen Financial Services will certainly make you think differently about financing and insuring your new Volkswagen. Committed to meeting the needs of Volkswagen drivers across Australia, we offer a range of leasing, financing and insurance products, each with distinct advantages depending on your specific circumstances. We can tailor a solution to suit your individual requirements, so you can rest assured that there will be no surprises along the way. Speak to your local participating authorised Volkswagen Dealer today to put together a solution that best suits your lifestyle.

Volkswagen Choice Guaranteed Future Value^

Volkswagen Choice is a finance program available to approved applicants of Volkswagen Financial Services only, which provides Volkswagen owners protection around your Volkswagen's future value#, whilst offering a simple monthly instalment financing option. Enjoy the peace of mind of knowing the minimum value you can receive for your vehicle at the end of your contracted term. You can choose to either trade-in, return or retain your Volkswagen – it's your choice. Learn more about how to protect your investment by visiting www.volkswagen.com.au/en/choice.html today.

Volkswagen Assured Service

What you can expect as standard when servicing through our authorised Volkswagen dealer network is an expert team, trained by Volkswagen utilising specialist Volkswagen diagnostic equipment ensuring they're able to cater for all of your Volkswagen's servicing and repair needs. They also have access to the full Volkswagen Genuine Parts catalogue making sure any part replaced during a service or repair is replaced with a Volkswagen Genuine Part. What's more, your Volkswagen will be returned in immaculate condition, cleaned and vacuumed. Add these together and you can rest assured there's no better place to keep your Volkswagen running like a Volkswagen.

^The Volkswagen Choice Program consists of an option to require Volkswagen Financial Services to purchase your vehicle at the end of your Volkswagen Financial Services Chattel Mortgage, Consumer Loan or Hire Purchase for a value (known as the Guaranteed Future Value) determined by Volkswagen Financial Services and set out in your contract. The Guaranteed Future Value is not a representation by Volkswagen Financial Services as to the likely market value of your vehicle as at the end of your contract. The option is available on new and demonstrator Volkswagen vehicles for selected models only. Please verify with your dealership vehicles that are eligible for the program. #If vehicles are not returned in an acceptable condition, as defined in the terms and conditions or exceed kilometre restrictions the Guaranteed Future Value will be reduced. See the Volkswagen Choice Fair Wear and Tear Guide for more information on the required conditions and circumstances. The cost of the Volkswagen Choice Program is incorporated into the applicable interest rate. Please read the full terms and conditions. Please consider whether these products and services are appropriate for your circumstances. Before acting on any of the information on this page, please seek independent financial and tax advice. Full terms and conditions are available upon application. Available only to approved applicants of Volkswagen Financial Services. Subject to credit assessment. Fees and charges apply. Fleet, government, rental buyers, hire car and chauffeur companies are excluded. Available at participating Volkswagen dealers. Volkswagen Financial Services is a trading name of Volkswagen Financial Services Australia Pty Limited ABN 20 097 071 460. Australian Credit Licence 389344.

The Multivan

Volkswagen Group Australia Pty Ltd
24 Muir Road Chullora NSW 2190
ABN 14 093 117 876

Printed in Australia
August 2017
www.volkswagen.com.au

Publication: VWCMULSPECMY18

Your Volkswagen dealer.

Important information

Apple CarPlay® is a registered trademarks of Apple Inc. Android Auto™ is a registered trademark of Google Inc. MirrorLink® is a registered trademark of Car Connectivity Consortium LLC. Bluetooth® is a registered trademark of Bluetooth SIG Inc. Alcantara® is a registered trademark of Alcantara S.p.A.

Volkswagen is distributed by Volkswagen Group Australia Pty Ltd, 24 Muir Road, Chullora, NSW 2190, ABN 14 093 117 876. Specifications are as planned at August 2017, for Model Year 18 and are subject to change without notice or obligation. All information in this brochure is correct at the time of publication, however variations may occur from time to time and Volkswagen, in so far as it is permitted by law to do so, shall not be liable in any way as a result of any reliance by any person on anything contained in this brochure. Authorised Volkswagen dealers will provide up-to-date information on model application, design feature, prices and availability on request. All colours are a general guide only, as the printing process cannot reproduce the actual exterior colour appearance. See your dealer to confirm colour/model availability.