

**ASX**



**MITSUBISHI  
MOTORS**



**LOVE THAT CAR**





# ASX IS THE CITY-SIZED, STREET-SMART SUV.

It has all the practicalities of a small car and all the benefits of a medium with more legroom, a cavernous boot and higher driver's perspective.

ASX has the looks to turn heads and the substance to capture hearts.

At first glance, you'll be taken by its distinctive front grille, sporty alloy wheels and chrome trim. But when you slide into the driver's seat prepare to be love-struck.

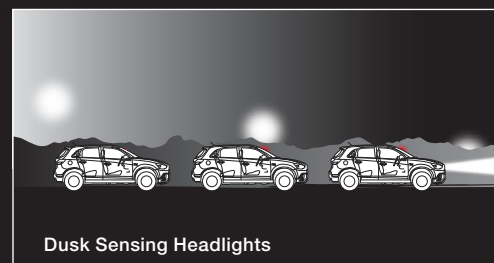
ASX is available in 2WD and 4WD in both LS and top of the line XLS models and comes with the option of a 2.0L MIVEC petrol or 2.2L turbo diesel engine.



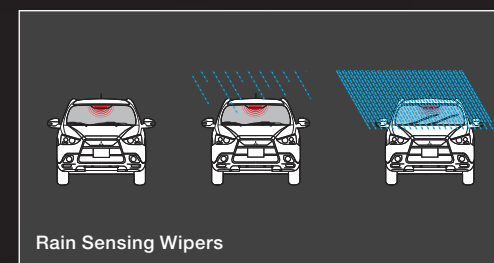
Smart Key



One Touch Start System



Dusk Sensing Headlights



Rain Sensing Wipers

THE ASX INTERIOR IS IMMEDIATELY WELCOMING, WRAPPING YOU IN THE PERFECT BALANCE OF SUPPORT, STYLE, SAFETY AND PRACTICALITY.

The ergonomically designed seats are as comfortable as they look. When combined with the telescopic steering wheel, they offer the ideal driving position whatever your size.

The instrument cluster gives the driver maximum visibility, encased in ASX's gently rounded seamless dash.

In the back, ASX is surprisingly spacious with more legroom than you would expect in such a compact SUV. And throughout ASX, the clever storage design means there's plenty of room for everything. ASX has the latest hands-free phone system technology with Bluetooth® connectivity, so you can make and receive calls at the touch of a button.

## STREET-SMART AND BOOK-SMART AS WELL.

**Smart Key** is just that-complete keyless operation. ASX XLS recognises the key within a 70cm radius, so you can lock and unlock the doors, open the tailgate and even start the engine with the touch of a button, with the smart key safely tucked in your pocket or bag.

A **rain sensor** automatically detects moisture on the windscreen and, according to the amount of rain falling, will activate the wipers to work at the appropriate speed. Light sensors automatically switch on the headlamps when it gets dark or when travelling through a tunnel. The fewer things to distract you from the road ahead, the better.

ASX is powered by a 2.0 litre petrol or 2.2 litre turbo charged common rail direct injection diesel engine. The 2.0 litre petrol engine uses the latest MIVEC engine technology to deliver uncompromised power with extremely efficient fuel consumption.

**Continuously Variable Transmission (CVT)** offers infinitely variable gear ratios that allow the engine to always operate at optimum RPM, irrespective of the vehicle's speed. This maximises power and economy and helps to create a smooth, stable ride with seamless gear changes. Sports Mode allows you to switch from the ease of the CVT automatic and the control of a 6-step manual transmission without a clutch.



WHAT KEEPS  
ASX SAFE IN  
THE STREETS?



## THE STRENGTH TO BE SMART.

Mitsubishi's Reinforced Impact Safety Evolution body system (RISE) with integrated chassis is a highly rigid, one-piece shell. RISE integrates a rigid ladder frame and side impact bars with collision absorbing joints.

This super strength cabin cocoons you and your passengers with outstanding protection in the event of an accident.

The side-frame door surrounds consist of a reinforced ring structure and the corners of openings such as rear door and tailgate are intensively reinforced to achieve a high degree of rigidity.



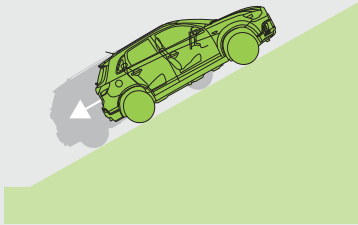
The frame comprises of pillars joined to the roof and a closed-section frame for the entire tailgate, with large cross members providing further reinforcements in the underbody.

Plastic Fenders – provide excellent shape recovery in the event of minor impacts.

For more information on the city-sized ASX range scan the QR code or visit [mitsubishi-motors.com.au](http://mitsubishi-motors.com.au)



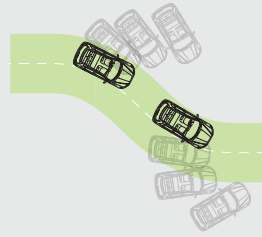
### HSC



#### Hill Start Control (HSC)

This technology makes it easier to start off up steep city streets by preventing the vehicle from rolling backwards. It maintains the braking force for two seconds giving you time to move your foot from the brake to the accelerator.

### ASC



#### Active Stability Control (ASC)

ASC maintains stability and control when cornering by automatically recognising under-steer and over-steer. It applies brakes to the appropriate wheels to keep you online through corners.

### ATC



#### Active Traction Control (ATC)

ATC helps maintain traction on slippery surfaces. When sensing loss of traction in an independent wheel, ATC applies braking force to that wheel and sends extra power and torque to other wheels that have traction to keep you moving and in control.

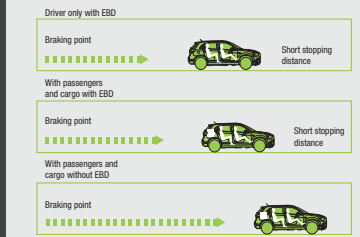
### ABS



#### Anti Lock Braking System (ABS)

ABS is ready to perform if you're faced with the unexpected. ABS helps the driver maintain steering control and avoid hazards by adjusting the braking pressure to prevent the wheels from locking up under hard braking or during an emergency stop.

### EBD



#### Electronic Brakeforce Distribution (EBD)

This technology reduces stopping distances by detecting passengers or heavier loads and then automatically increasing the rear-braking force to deliver predictable and consistent stopping performance.



ASX has a long list of advanced safety features. But it's the way they all work together that makes ASX such a safe vehicle for you and your occupants.

ASX has seven SRS airbags. Side airbags to protect occupants against thorax injuries, curtain airbags to give protection from side collisions, driver and front passenger airbags, and a driver knee airbag for protection in head-on collisions.

ASX 4WD comes with All Wheel Control (AWC). You can push-button select instantly (at speeds of up to 100km/h) between '2WD' if you want greater efficiency and '4WD' if you need

increased traction on slippery or loose roads. There's also a 'Lock' mode, which provides positive drive to both front and rear wheels, perfect for when roads become unpredictable.

Standard across the ASX range are reverse parking sensors and a reversing camera which activates automatically whenever reverse gear is engaged. Your rear driving vision is seen via the in-dash on-screen display/audio system on LS models, and the in-dash on-screen display Mitsubishi Multi Communication System (MMCS) on XLS models. All this makes parking your ASX in the tightest city parks a breeze.

Staying connected in an ASX is so simple with minimal interruption to the driver. MMCS is an integrated system that provides you with complete control over audio, media and communications via a 7" full colour in-dash touch screen display. Not only can you control the satellite navigation and stereo system, but you can also make calls hands-free via Bluetooth® or even control your iPod, all via the touch screen.

And, with USB connectivity, accessing your music through the audio system is easy— whether it's on an iPod, smartphone, MP3 player or USB stick.



To see our full range of ASX accessories visit [mitsubishi-motors.com.au](http://mitsubishi-motors.com.au)



Rear Styling Element – Silver



Front Styling Element – Silver



Door Mirror Cover – Chrome



Towbar Package



Front Parking Assistance Sensors



Embroidered Carpet Mats



Rear Bumper Plate



Tailgate Protector– Chrome

## ACCESSORISE YOUR CITY SIZED SUV.

We may have city-sized the SUV, but our range of ASX accessories is bigger than ever. Ask your Mitsubishi dealer or visit [www.mitsubishi-motors.com.au](http://www.mitsubishi-motors.com.au) for the complete list available to help you survive the urban jungle.

Mitsubishi Genuine Accessories go through an extensive program of design, development and stringent testing to ensure they meet all applicable government standards as well as Mitsubishi's own rigorous engineering and specifications and performance targets. Using Mitsubishi Genuine Accessories will ensure you get the best quality accessories that are both as durable and reliable as the Mitsubishi you drive.



Sports Rear Spoiler



Alloy Fuel Lid



Chrome Towball



Chrome Door Handle Covers



Fog Lamp Protectors



Sports Gear Shift Knob



Roof Rail Cross Bars



Front Mud Flaps



Outer Scuff Plates – Stainless Steel



Full Size Spare Wheel & Accommodation Kit



Cargo Barrier



Cargo Net



Cargo Area Protector – Full Cover



Cargo Liner – Hard Plastic



Neoprene Seat Covers – Front



Neoprene Seat Covers – Rear

Pictures shown for illustration purposes and may not be product specific. Please check with your Mitsubishi dealer for specific model applications.

## LS 2WD/4WD



### LS 2WD (KEY FEATURES)

#### Mechanical

2.0L 4cyl DOHC 16 valve MIVEC petrol engine  
5 speed manual transmission  
Continuously Variable Transmission (CVT) with INVECS III  
Smart Logic and 6 step Sports Mode (optional)  
Electric power steering

#### Exterior

17" Alloy wheels  
Body colour door handles  
Body colour door mirrors with integrated turn indicator  
Body colour bumper  
Side airdam  
Black door sash  
Mudflaps – rear  
Front fog lamps  
Chrome exhaust tip  
Privacy glass  
Chrome side window garnish  
Halogen headlamps  
Roof rails – black  
Rear roof spoiler with high mount stop lamp  
Chrome grille surround  
LED Daytime Running Lamps (DRL)

#### Interior

Leather bound steering wheel  
Leather bound gear shift  
Chrome interior door handles  
Door trim cloth inserts  
Inner scuff plates  
Carpet floor coverings  
Chrome accented control HVAC control switches  
Chrome accented instrument cluster  
Piano black centre panel

#### Comfort

Climate control air conditioning  
Rear air conditioning ducts  
Rear seat heater ducts  
Pollen filter  
Side and rear window demister  
Driver foot rest  
Passenger assist grips  
Driver assist grip  
Tilt and telescopic adjustable steering column

#### Convenience

Cruise control with steering wheel switches  
Central door locking with keyless entry  
Power door mirrors  
Door mirrors with power fold control  
Variable intermittent windscreen wipers  
Intermittent rear wiper and washer  
Accessory power socket  
Room lamp  
Front map lamps  
Cargo area lamp  
Interior lamp with time delay  
Ignition key cylinder illumination  
Ashtray  
Digital clock  
Coat hook  
Sunvisor with illuminated mirrors  
Sunvisor with ticket holders  
High contrast instrument meter  
Tachometer  
Trip meter  
Headlamps on warning, door ajar warning, low fuel warning  
Remote fuel filler release  
Tailgate inside grip  
Day/night rear view mirror  
Power windows – front and rear  
Welcome/coming home light

#### Storage

Floor console with upper and lower storage  
Front door pockets  
Cup holders  
Bottle holders  
Passenger seat back pocket  
Fully trimmed cargo area  
Luggage tie-down hooks  
Glovebox – illuminated

#### Seating

Cloth seat trim  
Front bucket seats  
Driver seat with slide, recline and height adjuster  
Passenger seat with slide and recline adjuster  
Height adjustable headrests  
60/40 split fold rear bench seat  
Rear centre armrest with cup holders

#### Audio & Media

Electronic tune AM/FM radio/CD/MP3 player  
6.1" full colour touch screen  
Steering wheel audio and phone controls  
4 speakers  
Roof mounted antenna  
Multi information display – includes trip computer, outside temperature, average fuel consumption  
USB input  
iPod control  
Bluetooth® 2.0 phone connectivity & audio streaming with voice control

#### Safety

Driver & front passenger SRS airbags  
Driver and front passenger side SRS airbags  
Curtain SRS airbags  
Driver knee airbag  
Anti-lock Braking System (ABS)  
Electronic Brakeforce Distribution (EBD)  
Active Stability Control (ASC)  
Active Traction Control (ATC)  
Hill Start Control (HSC)  
Reinforced Impact Safety Evolution (RISE) body  
Intrusion minimising brake pedal  
Reverse parking sensors  
Reverse camera  
3 point Emergency Locking Retractor (ELR) seatbelts  
Auto Locking Retractor (ALR) seatbelts on outbound 2nd row seats  
Front seatbelt pretensioners & force limiters  
Front seatbelt height adjustable shoulder anchorages  
Seatbelt warning lamp – driver & front passenger  
Child proof rear door locks  
Child restraint anchorage points (x3)  
ISO-Fix child seat mountings (x2)  
Illuminated hazard switch  
Power brake booster with emergency brake assist system  
Smart Brake  
Emergency Stop Signal Function (ESS)

#### Security

Anti-theft encrypted engine immobiliser  
Theft protection alarm  
Steering lock

\*See [www.mitsubishiinlink.com.au](http://www.mitsubishiinlink.com.au) for individual phone compatibility with Mitsubishi Bluetooth systems.

## LS 4WD

(FEATURES ADDITIONAL TO 2WD)

#### Mechanical

All Wheel Control 4WD (AWC)  
2.2L 4cyl DOHC 16 valve intercooled turbo common rail direct injection diesel engine with 6 speed automatic transmission with INVECS II

#### Interior

Chrome accented All Wheel Control switch

#### Convenience

4WD indicator lamp

## XLS 2WD

(FEATURES ADDITIONAL TO LS 2WD)

#### Mechanical

Continuous Variable Transmission (CVT) with INVECS III Smart Logic and 6 step Sports Mode  
Paddle shifts

#### Interior

Leather look door trim

#### Comfort

Panoramic glass roof with electric sun shade and LED mood lighting

#### Seating

Leather seat facings  
Power drivers seat  
Heated front seats

#### Convenience

Smart Key  
One Touch Start System  
Automatic rain sensing wipers  
Automatic dusk sensing headlamps

#### Audio & Media

Mitsubishi Multi Communication System with 7" touch screen display with 3D navigation mapping with SD Card audio input  
6 speakers

#### Safety

Electro-chromatic rear view mirror

## XLS 2WD



## XLS 4WD





## INTERIORS

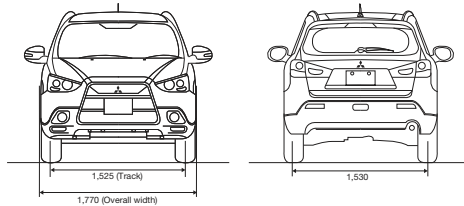
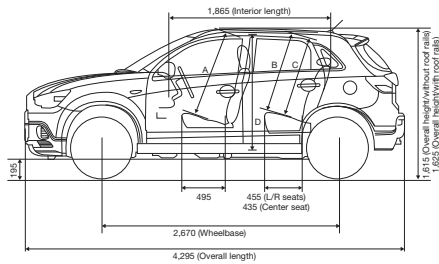


LS Cloth



XLS Leather

## EXTERIOR DIMENSIONS (MM)



Ground Clearance Petrol – 195mm / Diesel – 180mm

## KEY SPECIFICATIONS

	LS 2WD	LS 4WD	XLS 2WD	XLS 4WD
<b>Engine</b>				<b>Diesel</b>
Maximum power (kW)	110@6000	110@3500	110@6000	110@3500
Maximum torque (Nm)	197@4200	360@1500-2750	197@4200	360@1500-2750
<b>Fuel Consumption<sup>2</sup> – ADR81/02 (Litres per 100kms) combined</b>				
Manual Transmission	7.6	-	-	-
CVT Automatic Transmission	7.4	-	7.4	-
Automatic Transmission	-	5.8	-	5.8
<b>Maximum Towing Capacity<sup>1</sup></b>				
With trailer brakes (kg)	1300	1400	1300	1400
Without trailer brakes (kg)	750	750	750	750
Maximum towball download (kg)	130	140	130	140
<b>Gross Vehicle Mass (kg)</b>				
Petrol	1970	-	1970	-
Diesel	-	2060	-	2060
<b>Kerb Mass (kg)</b>				
2.0L Petrol Manual	1325	-	-	-
2.0L Petrol CVT Automatic	1355	-	1355	-
2.2L Diesel Automatic	-	1530	-	1530
<b>Cargo Area</b>				
Width between wheel arches (mm)	995	995	995	995
Height (mm)	745	745	745	745
Length with 2nd & 3rd row seats folded (mm)	1510	1510	1510	1510
Capacity (L)	393	393	393	393
Capacity with 2nd & 3rd row seats folded (L)	1193	1193	1143	1143

1. Subject to state regulation and towbar designs.

2. These figures are obtained from controlled tests conducted by Mitsubishi Motors Australia to Australian Design Rule ADR81/02 and are provided to assist you in comparing the fuel consumption of ASX with other vehicles.

## COLOUR YOUR ASX



COOL SILVER (M)



STARLIGHT (P)



BLACK (P)



TITANIUM (M)



LIGHTNING BLUE (M)



RED (M)



WHITE

METALLIC (M) AND PEARLESCENT (P) PAINTS ARE OPTIONAL EXTRAS



# DIAMOND ADVANTAGE

†5 year or 100,000km New Vehicle Warranty (whichever comes first). Service conditions apply. \*4 years or 60,000km Capped Price Servicing (whichever occurs first). Covers all items specified under the standard "Maintenance for normal operating conditions" scheduled detailed in the service and warranty booklet. Additional service/repair items (if required) are at additional cost. †1 year Roadside Assist (Service conditions apply). For purchases of new Mitsubishi vehicles after 1st October 2012, your initial 12 month roadside assist will be extended for a period of 12 months from the date of the most recent eligible Capped Price Service for that vehicle performed at an authorised Mitsubishi dealer. Roadside assist, if extended in accordance with these items, is available for a maximum of up to 5 years. Conditions apply. Offer subject to change without notice. Excludes Government, Rental and National Fleet customers.

Always consult your authorised Mitsubishi Dealer for the latest details on specifications, options, prices, availability and conditions on New Vehicle warranty. All product illustrations and specifications referred to herein are believed to be correct at the time of publication approval. Subject to any applicable Federal, State or Territory Laws or ordinances, which may apply from time to time, Mitsubishi Motors Australia Limited reserves the right, without notice, or obligation, to discontinue or make changes to designs, specifications, colours and materials of the options and products referred to herein at any time without incurring any liability to any purchaser thereof. © Mitsubishi Motors Australia Limited. ABN 53 007 870 395 MITO408 ASX0514

# LOVE THAT CAR